

Protective Effects of HEAC and its Primary Active Compound on HCl-ethanol Induced Gastritis in Rats

Won-sik Choi^{1*}, Do-Yoen Jang², Gyung-Rak Lee¹ and Seung-Han Kim¹

¹Department of Biotechnology, Soonchunhyang University

²Division of Synthesis Research Laboratory, Dongbang FTL

흰쥐에서 염산-에탄올로 유발된 위염에 대한 HEAC 추출물과 그 주성분의 억제효과

최원식^{1*}, 장도연², 이경락¹, 김승한¹
¹순천향대학교 생명공학과, ²동방 FTL 합성연구소

Abstract The purpose of this study is to evaluate the gastric mucosal damage effect by *Hericium erinaceus* cultivated with *Artemisia capillaris* (HEAC) with 0.15 M HCl in ethanol in rats. Among them, 80% ethanol extract showed potent inhibitory effect (67.7%) on gastritis. Using solvent fractionation, 80% ethanol extract of HEAC was separated into five fractions with *n*-hexane, methylene chloride, ethyl acetate, *n*-butanol and water. As a result, fractions obtained with methylene chloride exhibited strong inhibitory effects on gastritis. With this result, the methylene chloride extract was analyzed by GC/MS, HPLC, IR and NMR(¹H, ¹³C) to identify primary active components and the main component in the extract was identified as ethyl linoleate. The effective doses (ED₅₀) values of 80% ethanol extract of HEAC and ethyl linoleate showed 22.6 and 6.4 mg/kg, respectively and these values were higher than those of stillen (44.2 mg/kg) and selbex (46.5 mg/kg). Therefore, the administration of 80% ethanol extract of HEAC and ethyl linoleate have a strong protective effect against the gastritis induced by HCl-ethanol and may be promising new drug for treating gastritis and gastric ulcer.

요약 노루궁뎅이 버섯 균사체를 인진쑈 배지에 배양시킨 배양물(HEAC)을 여러 농도의 에탄올-물의 용액으로 추출하고, 쥐에서 위염 유발시약(0.15 M 염산-에탄올 용액)에 의한 위점막 손상에 대하여 추출물들의 위염 억제효과실험을 실시하였다. 그 중 80% 에탄올 추출물은 위염에 대하여 67.7%로 우수한 억제효과를 나타내었다. 용매별 분획으로 HEAC의 80% 에탄올 추출물을 노르말 헥산, 염화메틸렌, 초산에틸, 노르말 부탄올과 증류수를 이용하여 5가지 분획으로 분리하였다. 그 결과, 노르말 헥산과 염화메틸렌 분획들이 위염에 대하여 우수한 억제효과를 나타내었다. 이에 따라 염화메틸렌 추출물에 대하여 GC/MS, HPLC, IR and NMR(¹H, ¹³C)을 이용하여 생리활성 주성분의 구조를 확인한 결과 ethyl linoleate임을 확인하였다. 또한, HEAC의 80% 에탄올 추출물과 ethyl linoleate의 ED₅₀값이 각각 22.6과 6.4 mg/kg을 나타내어 대조약제인 stillen (44.2 mg/kg)과 selbex (46.5 mg/kg) 보다 우수한 억제효과가 있음을 확인하였다. 그러므로, HEAC의 80% 에탄올 추출물과 ethyl linoleate는 염산-에탄올에 의하여 유발된 위염에 대하여 우수한 억제효과를 가지고 있으며, 새로운 위염, 위궤양 치료제로 개발될 수 있을 것으로 기대된다.

Key Words : HEAC, Gastritis, Rat, Ethyl linoleate, 80% ethanol extract

This work was supported by Soonchunhyang University.

*Corresponding Author : Won Sik Choi

Tel: +82-41-530-1351 email: wschoi@sch.ac.kr

Received January 26, 2012

Revised (1st March 21, 2012, 2ed March 28, 2012)

Accepted April 29, 2012

1. Introduction

The generation of reactive oxygen species (ROS) caused by alcohol consumption has been referred to acute gastric lesions. Other factors such as stress, *Helicobacter pylori* infection, and administration of non-steroidal anti-inflammatory drugs also evoke gastritis and gastric ulcers, leading to gastric cancers. Gastric cancer has been recognized as the first leading cause of cancer death in Korea and attention to epidemiologic associations between risk factors and gastric cancer. Risk factors with old age, male gender, *H. pylori* seropositivity and smoking have been determined in Korean population for metaplastic gastritis, precancerous lesion of gastric cancer[1].

In relation to risk factors in Korean gastritis, the prevalence of *H. pylori* infection dramatically increases and reaches up to 50% at 5 years of age, and 90% in asymptomatic adults over the age of 20[2].

In the last decades in Korea, many efforts have contributed to discover new gastroprotective drugs from natural products and some plants such as araloside A from *Aralia elata* and DA-9601 obtained from *Artemisia asiatica* are good natural sources to treat gastric ulcers [3-4], and eupatilin is an ethanol extract of *Artemisia capillaris* which has been used as a traditional oriental medicine with the anti-complementary activity[5].

Recently, HEAC have showed inhibitory effects on the biotransformation of aflatoxin B₁ to aflatoxin B₁ 8,9-epoxide which forms a single initial DNA adduct with the guanyl N₇ atom in the DNA sequence[6], and interferon-inducing activity[6]. In addition, HEAC have possessed the inhibitory effect on the proliferation of human VSMCs and the protective effects on CCl₄-induced acute hepatic damage in rats[7].

In this study, HEAC was evaluated for gastroprotective effect in the HCl ethanol-induced gastric lesions in rats. By a serial bioassay-guided separation, a potential gastroprotective compound from HEAC was isolated and identified as ethyl linoleate.

2. Materials and methods

2.1 materials

2.1.1 Chemicals

EtOH and diethyl ether (ACS grade) were purchased from Duksan (Suwon, Korea). The chemical reagents used in this study were from Sigma Chemical Co. (St. Louis, MO, USA). HEAC was supplied by Cosis Bio Company. Stillen was obtained from Dong-A Pharmaceutical. Selbex was supplied by Han-II Pharm Company.

2.1.2 Biological materials

Male SPF Sprague-Dawley rats (180-210 g) were used in the experiments. All animals were housed in a temperature-controlled room with a 12 h light period. They were fed commercial solid food (Samyang Yuji Co. Ltd., Seoul) and tap water *ad libitum*. The test materials were suspended in 0.2% carboxymethylcellulose solution and given in a volume of 0.2 mL/100 g body weight. The doses of the test materials were chosen based on the yields obtained from the original extract or fractions. The room temperature was maintained at 25°C.

2.2 methods

2.2.1 Isolation and Identification

HEAC (3.0 kg) was extracted two times with 80% ethanol (25 L) at room temperature for 2 days and the extract was filtered. The resultant extract was combined and concentrated under reduced pressure at 40°C to yield about 11.0% (based on the weight of the dried HEAC). The 80% ethanol extract of HEAC (30.0 g) was sequentially partitioned into *n*-hexane (3.9 g), methylene chloride (8.2 g), ethyl acetate (2.9 g), butanol (2.3 g), and water (12.7 g) fractions for bioassay. The organic solvent fractions were concentrated to dryness by rotary evaporation at 40°C, while the water fraction was freeze-dried.

The methylene chloride fraction (10.0 g) was chromatographed on a silica gel column (70-230 mesh, 500.0 g, 5.5 x 70 cm; Merck, Darmstadt, Germany), and successively eluted with a stepwise gradient of dichloromethane/methanol (100/0, 90/10, 80/20, 70/30, 60/40, 50/50, and 0/100 v/v).

Column fractions were analyzed by thin-layer chromatography (TLC; Silica gel G), and fractions with a similar TLC pattern were pooled. The bioactive fraction (1.5 g) was successively rechromatographed on a silica gel column, using a stepwise gradient of *n*-hexane/ethyl

acetate (90/10, 80/20, 70/30, 60/40, and 0/100 v/v). For further separation of the constituents, the active 60/40 fraction (0.5 g) was fractionated by preparative high-performance liquid chromatography (HPLC; Spectra System P2000, Thermo Separation Products, San Jose, CA).

The column was a 250 × 4.6 mm Cosmosil 5C₁₈-MS-II (Nacalai Tesque, Kyoto, Japan). The mobile phase was acetonitrile - water (25:75, v/v). The flow rate was 1.0 mL/min, the effluent was monitored at 254 nm and the column temperature was set at 30 °C. Finally, active principle (1.7 mg) was isolated at the retention times of 11 min. Structural determination of the active isolates was made by spectroscopic analyses. ¹H-NMR and ¹³C-NMR spectra were recorded with a JNM-LA 400 F7 spectrometer (JEOL, Tokyo, Japan) and chemical shifts were given in δ (ppm). Fourier transform-infrared (FT-IR) spectra were obtained on a VECTOR 22 spectrometer (BRUKER, Frankfurt, Germany). Gas chromatography/mass spectrometry (GC/MS) was performed on a GC/MS-QP5050A (Shimaezu, Kyoto, Japan).

The standard vacuum system consists a 150 L/sec turbomolecular vacuum pump and a 50 L/min baking rotary pump. Samples volumes of 1 µl were analyzed with a GC-17A gas chromatograph coupled to a 4000 ion trap mass spectrometer (Shimaezu, Kyoto, Japan). Derivatized samples were vaporized at 250 °C in standard split mode (1:25) and separated on a 30 m × 0.25 mm VB-1701 capillary column with 0.25 µm coating equipped with an integrated 10 m guard column (Shimaezu, Kyoto, Japan). The oven temperature was set at 120 °C, held for 5 min, then increased to 290 °C at 3.5 °C/min and held for 5 min. Helium carrier gas (purity > 99.9%) flow was adjusted to 1.5 ml/min. The interface and ion source temperature were set to 200 °C and electron impact ionization (70 eV) was utilized. The averaged scan was full scanning with a range of 50 - 1000 m/z. Metabolites were identified by comparison to the NIST 2005 database (version 2.0, Shimadzu Co., Japan).

2.2.2 Ethanol/HCl-induced gastric lesion in rats

The gastroprotective activity of the samples was assessed in the ethanol - HCl induced lesion model as previously described[8]. Rats were randomly allotted into

nine groups of eight rats in each group and fasted for 24 h with free access to water prior to the experiment. Fifty minutes after oral administration of samples and the currently used medicines, all groups were orally treated with 0.2 mL of a solution containing 60% ethanol-0.15 M HCl (ethanol - HCl) for gastric lesion induction. Animals were sacrificed by ether overdoes and cervical dislocation 1 h after the administration of ethanol-HCl, and the stomachs were excised and inflated by injection of saline (1 mL). The ulcerated stomachs were fixed in 5% formalin for 30 min and opened along the greater curvature. Gastric damage visible to the naked eye was observed in the gastric mucosa as elongated black-red lines, parallel to the long axis of the stomach similar to the ethanol-HCl-induced lesions in rats. The length (mm) of each lesion was measured and the lesion index was expressed as the sum of the length of all lesions. The gastritis pictures were obtained at this stage.

2.2.3 Calculation of effective dose value

The equivalent dose causing a 50% increase in raw (ED₅₀) was determined of treatment to different concentrations of samples. Increasing doses of sample were then administered at doses of 10, 20, 30, 40, 75 and 150 mg/Kg. ED₅₀ was calculated in each rat by linear interpolation. The data represent the means ± standard deviations (SDs) of 3 independent experiments.

2.2.4 Statistical analysis

The experimental results were expressed as mean ± S.D. A one-way analysis of variance (ANOVA). When a significant (p < 0.05) effect was detected, the mean values were compared using Dunnett's test. The data were considered significant if the probability was less than 0.05.

3. Results

HEAC and its solvent fractions were assayed against gastric mucosal damage induced by HCl-ethanol solution. Significant differences were observed in the protective activity against the tested HEAC and solvent fractions when compared to the controls and the currently used

medicines for treating gastritis, selbex and stillen. The protective effects of various fractions of HEAC at the concentration of 40 mg/kg of rats against gastritis are shown in Table 1.

The *n*-hexane and methylene chloride fraction exhibited very strong protective activities against gastritis with the protection rate of 83.6 and 81.6%, respectively. The ethyl acetate fraction also showed strong activity against gastritis with the protection rate of 62.5%, whereas little protection activities were found in the butanol and water fractions. Due to its potent inhibitory activity against gastritis, the hexane fraction was selected for further study.

The methylene chloride fraction was separated into seven subfractions and very strong protective activity was observed with a subfraction C5 at the concentration of 40 mg/kg. Silica gel open column chromatography and preparative HPLC were used for further separation of the constituents in the C5 subfraction (1.0 g).

[Table 1] Gastroprotective activity of various solvent fractions obtained from the ethanol extract of *Hericium erinaceum* cultivated with *Artemisia capillaris* (HEAC) using ethanol/HCl-induced gastric lesion in rats

Treat	Dose (mg/Kg)	Gastric Lesion rate (Mean±S.E.M., %)	Inhibition rate(%)
Normal	-	-	-
Control	-	50.3 ± 2.5	-
80% EtOH	40	10.8 ± 3.2**	67.7
<i>n</i> -Hexane	40	9.3 ± 2.7	83.6
Methylene chloride	40	8.3 ± 2.3	81.6
Ethyl acetate	40	18.9 ± 2.4	62.5
<i>n</i> -Butanol	40	21.0 ± 8.8	58.3
Water	40	41.1 ± 2.5	18.3
Stillen	40	23.0 ± 5.4*	54.2
Selbex	40	23.5 ± 4.1*	53.2

n=8 animals in each group.

Values are expressed as mean ± standard deviation. In the same column, different Asterisk (*) are statistically different at $p < 0.05$; * $p < 0.05$, ** $p < 0.01$, significantly different from the control group.

The gastroprotective activity-guided fractionation with ethanol/HCl-induced gastric lesion in rats led to the isolation of one active principle that was identified as ethyl linoleate by means of spectroscopic analysis and by direct comparison with authentic compounds. This

compound was identified on the basis of the following evidence; ethyl linoleate ($C_{20}H_{36}O_2$, MW,308.27);FT-IR: ν_{max} (Nujol) 3010 (-CH=CH-), 2967 (CH stretching in CH_3), 2928 (CH stretching in CH_2), 1739 (C=O stretch in ester), 1664 (C=C), 1466 (C-H bending in CH_2 and CH_3), 1396 (C-H deformation), 1373 (C-H deformation in CH_3), 1302 (C-O stretching) cm^{-1} ; GC (retention time): 39.4 min; EI-MS (rel. int. %): m/z 309 [M + H]⁺(2), 308 [M⁺](25), 306 (2), 280 (2), 263 (20), 164 (11), 150 (13), 109 (32), 95 (59), 81 (85), 67 (100), 72 (7), 41 (80), 29 (50), 27 (25) ; ¹H-NMR (500 MHz, $CDCl_3$): δ 0.90 (t, 3H), 1.29 (t, 15H), 1.31 (m, 2H), 1.64 (m, 2H), 2.18 (t, 4H), 2.32 (t, 2H), 2.63 (s, 2H), 4.13 (quert, 2H), 5.37 (s, 2H), 5.43 (s, 2H); ¹³C-NMR (125 MHz, $CDCl_3$): δ 14.0 ($\underline{CH_3}$ -C-C-C-), $\underline{CH_3}$ -CH₂-O-C=O), 22.5 (CH_3 - $\underline{CH_2}$ -C-C-), 25.0 (- $\underline{CH_2}$ -C-C=O), 26.0 (-C-C-C-C-), 27.5 (- \underline{C} -C-C-), 28.5-30.0 (- $\underline{CH_2}$), 31.5 (- $\underline{CH_2}$ -CH₂-CH₃), 34.5 (- $\underline{CH_2}$ -C=O), 37.1-43.9 ($\underline{C-C}$), 60.4 (- $\underline{CH_2}$ -O-C=O), 67-76 (- \underline{C} -O-C-, \underline{C} -O-H), 82-86 (- \underline{C} -O-O- \underline{C} -), 86.5 (- \underline{C} -O-O-H), 127.7-131.5 (- $\underline{C}=\underline{C}$ -C- $\underline{C}=\underline{C}$ -), 124.3, 131.7-136.0 (- $\underline{C}=\underline{C}$ - $\underline{C}=\underline{C}$ -), 142.8, 145.7, 156.3 (- $\underline{C}=\underline{C}$ -C=O), 173.7 (-C=O).

According to GC/MS, one of the compound of HEAC extract gave a peak for with a retention time of 39.4 min. It was confirmed the ethyl linoleate. However, *Artemisia capillaris* and *Hericium erinaceus* extracts did not show a peak of 39.4 min. Therefore, ethyl linoleate compound is thought to be generated during the incubating.

At 40 mg/Kg, the compound of ethyl linoleate showed its gastroprotective activity with gastric lesion and inhibition rats of 10.8±3.2 and 67.7%, while those of stillen and selbex showed 26.5±5.4, 54.2 % and 23.8±4.1, 53.2% against gastritis [Table 2].

As shown in Table 3, compounds ethyl linoleate, stillen and selbex had the ED₅₀ values of 6.4, 44.2 and 46.5 mg/kg, respectively. ED₅₀ value of ethyl linoleate was much stronger than that of the commercial drugs (stillen and selbex).

Figure 1 shows the image of severe gastritis after HCl-ethanol treatment without any drug as control. However, the currently used medicines, stillen and selbex, inhibited gastritis in rats. When compared to these findings, ethyl linoleate had a potent protective effect on the gastritis induced by HCl-ethanol treatment.

[Table 2] Gastroprotective activity of ethyl linoleate isolated methylene chloride fraction from the ethanol extract of *Hericium erinaceum* cultivated with *Artemisia capillaris* (HEAC) using ethanol/HCl-induced gastric lesion in rats.

Treat	Dose (mg/Kg)	Gastric Lesion rate (Mean \pm S.E.M., %) ^{a)}	Inhibition rate(%)
Normal	-	-	-
Control	-	50.3 \pm 2.5	-
HEAC	150	2.7 \pm 1.2	94.6
	75	7.6 \pm 2.4	84.8
	40	16.2 \pm 3.2	67.7
	30	18.2 \pm 4.3	63.8
	20	29.0 \pm 3.5	42.4
	10	32.0 \pm 6.7	36.3
Ethyl linoleate	150	0.5 \pm 1.1	99.1
	75	7.8 \pm 2.8	84.4
	40	10.8 \pm 3.2	78.5
	30	12.5 \pm 4.6	75.1
	20	17.0 \pm 3.5	66.2
	10	21.4 \pm 3.2	57.5
	5	23.8 \pm 2.8	48.5
Stillen	150	14.7 \pm 2.8	70.8
	75	20.0 \pm 3.2	60.2
	40	23.5 \pm 5.4	54.2
	30	28.5 \pm 3.6	43.4
	20	29.0 \pm 4.7	42.3
	10	33.5 \pm 7.5	33.4
Selbex	150	14.5 \pm 5.4	71.1
	75	21.0 \pm 4.6	58.3
	40	23.8 \pm 4.1	53.2
	30	29.4 \pm 5.2	41.5
	20	30.2 \pm 4.8	39.9
	10	37.0 \pm 6.2	26.4

^{a)} $p < 0.05$

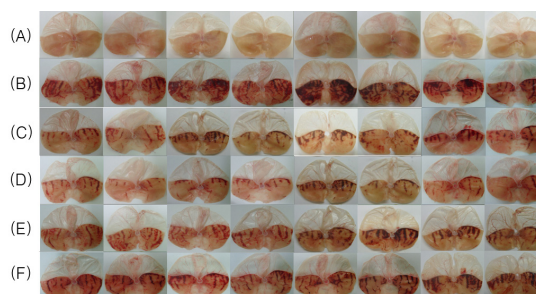
Values are means \pm SD of three replicated tests. Numbers of animal used in this wtudy was 8.

[Table 3] Effective dose (ED₅₀) value of ethyl linoleate isolated methylene chloride fraction from the ethanol extracts of *Hericium erinaceum* cultivated with *Artemisia capillaris* (HEAC) using ethanol/HCl-induced gastric lesion in rats.

Drugs	ED ₅₀ (mg/Kg) ^{a)}
HEAC	22.6 \pm 0.03
Ethyl linoleate	6.4 \pm 0.02
Stillen	44.2 \pm 0.01
Selbex	46.5 \pm 0.01

^{a)} $p < 0.05$

Values are means \pm SD of three replicated tests.



[Fig. 1] Inhibitory effect of gastritis for ethyl linoleate in rats. (A) Normal, (B) Control, (C) HEAC(40mg/kg), (D) Ethyl linoleate(40mg/kg), (E) Stillen(40mg/kg), (F) Selbex(40mg/kg).

4. Discussion

Hericium erinaceus is a well-known traditional edible mushroom in Korea. The mushroom induces maturation of dendritic cells [9] and its soluble components enhance NK cell activation via production of interleukin-12 in mice splenocytes[10]. Recently, *H. erinaceus* polysaccharides have been found to induce activities of antioxidant enzymes and anti-skin aging activities[11]. On the other hand, valuable constituents such as hericenone, erinacol, erinacine, and some terpenoids have been isolated from the mushroom and their biological activities such as the stimulatory activities on nerve growth factor have been found[12-13].

Similarly, *Artemisia capillaris* possesses liver protective effects on CCl₄-induced liver fibrosis in rats[14] and liver malondialdehyde levels have been significantly lowered in rats treated with the ethanol-soluble part of a hot-water extract of *A. capillaris*[4]. The inhibitory effects of *A. capillaris* on VSMC proliferation and intimal hyperplasia in the rat have been determined and esculetin in the plant has been isolated and refers to the activity. The mode of inhibitory activity of esculetin blocks cell proliferation via the inhibition of an upstream effector of Ras and downstream events including p42/44 MAPK activation, PI 3-kinase activation, immediate early gene expression as well as NF-kappaB and AP-1 activation[15].

HEAC extracts have showed similar liver protective activity against CCl₄-induced acute hepatic damage when compared to the extract of *A. capillaris*. Interestingly, this liver protective activity was not found in the methanol

extract of *H. erinaceus* grown in media without *A. capillaris*. Therefore, cultivation of the mushroom with *A. capillaris* is important to give the activity to the mushroom. In regard to the biological activity, HEAC shows a potent inhibitory activity on the proliferation of human VSMCs, while *H. erinaceus* grown in media in the absence of *A. capillaris* shows no inhibitory effects. The inhibitory effects may be caused by new metabolites or constituents derived from *A. capillaris*[7].

In our findings, ethyl linoleate showed a strong inhibitory effect on HCl-ethanol induced gastric mucosal damage in rats. The ED₅₀ value (6.4 mM) of the inhibitory effect was stronger than those of stillen and selbex (ED₅₀ value, 44.2 and 46.5 mM), the currently used medicine for treating gastritis [Table 3]. The extract was used for further isolation studies and an ethyl linoleate was purified from the active fraction. It was characterized by GC/MS, ¹H-NMR and ¹³C-NMR. The ED₅₀ value of ethyl linoleate on gastritis was only 6.4 mg/kg and it was seven times lower than those of ED₅₀ values of stillen and selbex [Table 3]. Ethyl linoleate is one of the major linoleic acid and feeding polyunsaturated essential fatty acids (linoleic and arachidonic acids) to experimental animals leads to massive increases in prostaglandin concentrations in gastric juice[16,17], and these prevent experimental mucosal injury. Prostaglandins and prostaglandin analogues also profoundly affect human gastric function.

Pharmacologically does they suppress acid secretion[18], stimulate secretion of mucus and bicarbonate[19,20] and protect the gastric mucosa against the harmful effects of salicylates[21], bile acid[22] and ethanol[23]. Their effects on gastrin release are controversial; they have been variously reported to decrease[24] or have no effect on[25] serum gastrin concentration.

Increased intake of polyunsaturated fatty acids could therefore lead to lowered acid secretion and increased gastric mucosal protection[26]. Additionally, a dramatic reduction on gastric lesions induced by HCl-ethanol treatment in rats has been found and the pictures [Fig. 1] clearly showed a dose-dependent effect on the gastritis.

HEAC and ethyl linoleate showed their strong synergically inhibitory effect on gastritis induced by HCl-ethanol and they are potent candidates for medicines to treat gastritis. Further studies are needed to understand

structure-activity relationships of coumarins on the remedy of gastritis.

References

- [1] S. Choi, Y. J. Lim and S. K. Park, "Risk factor analysis for metaplastic gastritis in Koreans", *World J. Gastroenterol.*, 12, pp. 2584 - 2587, 2006.
- [2] H. S. Youn, G. H. Ko, M. H. Chung, W. K. Lee, M. J. Cho and K. H. Rhee, "Pathogenesis and prevention of stomach cancer", *J. Korean Med. Sci.*, 11, pp. 373 - 385, 1996.
- [3] K. Huh, T. H. Kwon, U. S. Shin, W. B. Kim, B. O. Ahn, T. Y. Oh and J. A. Kim, "Inhibitory effects of DA-9601 on ethanol-induced gastro-hemorrhagic lesions and gastric xanthine oxidase activity in rats", *J. Ethnopharmacol.*, 88, pp. 269-273, 2003.
- [4] E. B. Lee, O. J. Kim, S. S. Kang and C. C. Jeong, "Araloside A, an antiulcer constituent from the root bark of *Aralia elata*", *Biol. Pharmac. Bull.*, 28, pp. 523-526, 2005.
- [5] E. B. Lee, "The effect of *Artemisia Herba* on gastric lesion and ulcers in rats with isolation of eupatilin", *Unesco Regional Seminar on the Chemistry, Pharmacology and clinical use of flavonoid compounds*, pp. 13-20, 1995.
- [6] S. E. Lee, J. H. Jeong, D. G. Kim and W. S. Choi, "Inhibitory effect on aflatoxin B₁-8,9-epoxide formation and anti-complementary activity of methanol extract from *Hericium erinaceus* cultivated with *Artemisia iwayomogi*" *Food Sci. Biotechnol.*, 12, pp. 183 - 186, 2003.
- [7] W. S. Choi, C. J. Kim, B. S. Park, S. E. Lee, G. R. Takeoka, D. G. Kim, X. L. Piao and J. H. Kim, "Inhibitory effect on proliferation of vascular smooth muscle cells and protective effect on CCl₄-induced hepatic damage of HEAC extract" *J. Ethnopharmacol.*, 100, pp. 176 - 179, 2005.
- [8] G. Schmeda-Hirschmann, J. A. Rodríguez and L. Astudillo, "Gastroprotective activity of the diterpene solidagenone and its derivatives on experimentally induced gastric lesions in mice", *J. Ethnopharmacol.*, 81, pp. 111 - 115, 2002.
- [9] S. K. Kim, C. G. Son, C. H. Yun and S. H. Han, "*Hericium erinaceum* induces maturation of dendritic cells derived from human peripheral blood monocytes", *Phytother. Res.*, 24, pp. 14 - 17, 2010.

- [10] M. H. Yim, J. W. Shin, J. Y. Son, S. M. Oh, S. H. Han, J. H. Cho, C. K. Cho, H. S. Yoo, Y. W. Lee and C. G. Son, "Soluble components of *Herium erinaceum* induced NK cell activation via production of interleukin-12 in mice splenocytes", *Acta. pharmacol. Sinica.*, 28, pp. 901 - 907, 2007.
- [11] H. Xu, H. R. Wu, Z. Y. Shen and X. D. Chen, "Chemical analysis of *Hericum erinaceum* polysaccharides and effect of the polysaccharides on derma antioxidant enzymes, MMP-1 and TIMP-1 activities", *Int. J. Biol. macromol.*, 2010.
- [12] H. Kenmoku, T. Shimai, T. Toyomasu, N. Katon and T. Sassa, "Erinacine Q, a new erinacine from *Hericum erinaceum*, and its biosynthetic route to erinacine C in the basidiomycete", *Biosci. Biotechnol. Biochem.*, 66, pp. 571 - 575, 2002.
- [13] E. W. Lee, K. Shizuki, S. Hosokawa, M. Suzuki, H. Suganuma, T. Inkauma, J. Li, M. Ohinishi-Kameyama, T. Nagata, S. Furukawa and H. Kawagishi, "Two novel diterpenoids, erinacines H and I from the mycelia of *Hericum erinaceum*", *Biosci. Biotechnol. Biochem.*, 64, pp. 2402 - 2405, 2000.
- [14] S. G. Lee, "The therapeutic effect of *Artemisia capillaris* extract on hepatic damage induced by carbon tetrachloride in rats", *J. Vet.*, 22, pp. 206 - 213, 2005.
- [15] B. Y. Ahn, H. S. Hwang, S. H. Baek, J. S. Kwak, D. S. Choi and J. H. Han, "Desmutagenic effect of water extract from *Artemisia capillaries* THUMB on the mutagenicity of benzo[a]pyrene. *Korean J. Biotechnol. Bioeng.*, 15, pp. 331 - 336, 2000.
- [16] D. Hollander, W. J. Krause and J. Stachüra, "Is linoleic acid (diethyl essential fatty acid-EFA) cytoprotective for the gastric mucosa?", *Gastroenterol.*, 88, pp. 610-614, 1985.
- [17] D. Hollander, A. Tarnawski and K. J. Ivey, "Arachidonic acid protection of rat mucosa against ethanol-induced injury", *J. Lab. Clin. Med.*, 100, pp. 296-307, 1982.
- [18] M. H. Pillinger, N. Marjanovic, S. Y. Kim, J. U. Scher, P. Izmirly, S. Tolani, V. Dinsell, Y. C. Lee, M. J. Blaser and S. B. Avramson, "Matrix metalloproteinase secretion by gastric epithelial cells is regulated by E prostaglandins and MAPKs", *The urnal of biological chemistry*, Vol. 280, No. 11, pp. 9937-9979, 2005.
- [19] J. S. Kim, K. Okamoto, S. Arima and B. K. Rubin, "Vasoactive intestinal peptide stiuates mucus secretion, but nitric oxide has no effect on mucus secretion in the ferret trachea.", *J. Appl. Physiol*, 101(2), 486-91, 2006.
- [20] J. I. Isenberg, D. L. Hogan, M. A. Koss and J. A. Selling, "Human duodenal mucosal bicarbonate secretion. Evidence for basal secretion and stimulation of hydrochloric acid and a synthetic prostaglandin E₁", *Gastroenterol.*, 91, pp. 370-378, 1986.
- [21] B. M. Peskar, K. Ehrlich and B. A. Peskar, "Interaction of cyclooxygenase-2 inhibitors and salicylate in gastric mucosal damage.", *European Journal of Pharmacology* 434, pp. 65-70, 2002.
- [22] T. Matsuhisa and T. Rsukui, "Relation between reflux of bile acids into the stomach and gastric mucosal atrophy, intestinal metaplasia in biopsy specimens.", *J. Clin. Biochem. Nutr.*, pp. 1-5, 2011.
- [23] A. E. Ligha and H. B. Fawehinmi, "Protection by liquorice in alcohol induced gastric mucosa damage", *Pak. J. Nutr.*, 8(10), pp. 1532-1536, 2009.
- [24] A. M. nielsen, J. Hillingsø, H. Frakiaer, K. Bukhave and J. R. madsen, "Gastric bicar-bonate secretion and release of prostaglandin E2 Are increased in duodenal ulcer patients but not on helicobacter pylori-positive healthy subjects.", *Scand. J. Gastroenterol*, Vol. 31, No. 1, pp. 38-43, 1996.
- [25] S. M. Park, B. C. Yoo, H. R. Lee, H. Chung, Y. S. Lee, "Distribution of prostaglandin E2 in gastric and duodenal mucosa: possible role in the pathogenesis of peptic ulcer.", *Korean J Intern. Med*, 7(1), pp. 1-8, 1992.
- [26] T. K. Razdan, B. Qadri, S. Harkar and E. S. Waight, "Chromenes and coumarins from *Skimmia laureola*", *Phytochem.*, 26, pp. 2063 - 2069, 1987.

Won-Sic Choi

[Regular member]

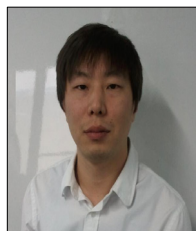


- Feb. 1974 : Korea Univ., Dept. of Chemistry (Bachelor)
- Feb. 1977 : Korea Univ., Dept. of Chemistry (Master)
- Feb. 2008 : Korea Univ., Dept. of Chemistry (Ph.D)
- Mar. 1982 ~ Feb. 1989 : Gangneung National Univ., Dept. of Chemistry, Professor
- Mar. 1989 ~ current : Soonchunhyang Univ., Dept. of Biotechnology., Professor

<Research Interests>

Organic chemistry, Organic synthesis, Natural product chemistry

Do-Yeon Jang [Regular member]



- Feb. 2002 : Soonchunhyang Univ., Dept. of Genetic engineering (Bachelor)
- Feb. 2004 : Soonchunhyang Univ., Dept. of Genetic engineering (Master)
- Feb. 2008 : Soonchunhyang Univ., Dept. of Genetic engineering (Ph.D)
- Feb. 2008 ~ current : Dongbang FTL, Synthesis Research Laboratory., Deputy manager

<Research Interests>

Organic chemistry, Organic synthesis, Natural product chemistry

Gyung-Rak Lee [associate member]



- Feb. 2011 : Soonchunhyang Univ., Dept. of Biotechnology (Bachelor)
- Mar. 2011 ~ current : Soonchunhyang Univ., Dept. of Biothenology., MS course

<Research Interests>

Organic chemistry, Organic synthesis, Natural product chemistry

Seung-Han Kim [associate member]



- Feb. 2012 : Soonchunhyang Univ., Dept. of Biotechnology (Bachelor)
- Mar. 2012 ~ current : Soonchunhyang Univ., Dept. of Biothenology., MS course

<Research Interests>

Organic chemistry, Organic synthesis, Natural product chemistry