

Research Article

Open Access

Effects of electron donors and acceptors in generating bioelectrical energy using microbial fuel cells

Anup Gurung and Sang Eun Oh*

Bioenergy Laboratory, Department of Biological Environment, Kangwon National University, Gangwon-do, South Korea

Received: 29 February 2012 / Accepted: 23 March 2012
© 2012 The Korean Society of Environmental Agriculture

Abstract

BACKGROUND: In recent years, microbial fuel cells (MFCs) have emerged as a promising technology for recovering renewable energy from waste biomass, especially wastewater. In this study, the possibility of bioelectricity generation in two chambered mediator-less microbial fuel cells (MFCs) was successfully demonstrated using fermentable and non-fermentable substrates.

METHODS AND RESULTS: Two different electron acceptors have been tested in the cathode chamber for the effects of reducing agent on the power generation in MFCs. The average voltages of 0.26 ± 0.014 V and 0.36 ± 0.02 V were achieved with acetate using oxygen and potassium ferricyanide as reducing agent, respectively. Similarly, with glucose the average voltages of 0.256 ± 0.05 V and 0.340 ± 0.04 V were obtained using oxygen and ferricyanide, respectively. Using potassium ferricyanide as the reducing agent, the power output increases by 39 and 43% with acetate and glucose, respectively, as compared to the dissolved oxygen. Slightly higher coulombic efficiency (CE%) was obtained in acetate as compared to MFCs operated with glucose. The maximum power densities of 124 mW/m^2 and 204 mW/m^2 were obtained using dissolved oxygen and $\text{K}_3\text{Fe}(\text{CN})_6$, respectively.

CONCLUSION(s): This study demonstrates that power generation from the MFCs can be influenced significantly by the different types of catholyte. Relatively higher CE was obtained with $\text{K}_3\text{Fe}(\text{CN})_6$. Thus, application of $\text{K}_3\text{Fe}(\text{CN})_6$ as the catholyte can be vital for scaling up power generation from the MFCs for real time applications.

Key Words: Bioelectricity, mediator less, microbial fuel cell, power density, swine wastewater

Introduction

Depending on the end-use applications, microorganism can produce fuels like ethanol, methanol and hydrogen from organic matter (Mohan et al., 2007; Oh and Logan, 2005). In recent years, it has been reported that microorganism can also generate power by converting organic matter into electricity using microbial fuel cells (MFCs) (Logan et al., 2006; Logan and Regan, 2006; Mohan et al., 2007; Rabaey and Verstraete, 2005). MFCs are bio-electrochemical reactors that convert biodegradable organic material directly into bioelectricity using electrochemically active microorganisms as biocatalysts (Jeremiase et al., 2010; Logan et al., 2006; Logan and Regan, 2006).

A typical MFC consists of anode and cathode compartments separated by cation specific membrane (proton exchange membrane; PEM) (Logan et al., 2006; Oh et al., 2004). Microbes in the anode compartment

*교신저자(Corresponding author),
Phone: +82-33-250-6449; Fax: +82-33-241-6640;
E-mail: ohsangeun@kangwon.ac.kr

oxidize fuel (electron donor) generating electrons and proton through the anaerobic respiration of organic substrates (Logan et al., 2006; Oh and Logan, 2006; Oh et al., 2009). The electrons are transported to the cathode through an external circuit (Mohan et al., 2007). Electrons and protons are consumed in the cathode compartment, reducing oxygen to water (Jeremiasse et al., 2010; Logan et al., 2006). During the process, the potential difference between the respiratory system and electron acceptor generates the current and voltage needed to generate electricity (Logan et al., 2006; Mohan et al., 2008; Oh and Logan, 2006; Oh and Logan, 2005).

MFCs technology provides new opportunities for the sustainable generation of bioelectrical energy from biodegradable and reduced organic compounds through the metabolic activity of the bacteria (Logan et al., 2006; Pant et al., 2010; Rabaey and Verstraete, 2005). MFCs have tremendous electron donor versatility in which microorganism use wastewater as substrates to generate electricity and accomplish wastewater treatment simultaneously (Lu et al., 2009; Mohan et al., 2007; Oh and Logan, 2005; Pant et al., 2010). In most of the MFCs studies so far, acetate and glucose have been the substrate of choice for electricity generation (Pant et al., 2010). These substrates are commonly used as carbon source in MFCs because of their inertness towards alternative microbial conversions, and cheap and readily available (Basu and Basu, 2010). In a MFC, substrate is regarded as one of the most important biological factors that influence the integral composition of the bacterial community in the anodic biofilm and the MFC performance including power density and coulombic efficiency (Chae et al., 2009; Liu et al., 2009; Lu et al., 2009; Oh and Logan, 2006; Pant et al., 2010).

There are a variety of factors that affect the overall performance of a MFC, such as performance of the cathode, solution conductivity, pH, alkalinity, circuit resistance, proton transfer through the membrane and type of organic matter (Gil et al., 2003; Liu et al., 2005; Logan et al., 2006; Oh and Logan, 2006). In most of the MFC studies so far, mainly Pt has been used as a catalyst to improve the oxygen reduction rate at the cathode (Liu et al., 2005). Pt has high catalytic performance, however, is an expensive catalyst and presently limits the large scale application in MFCs (Jeremiasse et al., 2010). Pt is expensive and its components present in wastewaters can affect the

performance of MFCs negatively (Selembo et al., 2009). Therefore, there is need for alternative catalyst at the cathode that is cost-effective.

Due to its unlimited availability and high standard redox potential, oxygen was used as terminal electron acceptor in the cathode compartment of MFCs (Tran et al., 2009). In this study, we report on power generation in two chamber mediators-less MFC, using organic compounds as substrate (carbon source or electron donor). Two different cathodic catalysts; oxygen and potassium ferricyanide ($K_3Fe(CN)_6$) were evaluated in order to ascertain the effect of these materials on power generation.

Materials and Methods

MFC configuration

The two chambered H-type MFCs (310 mL capacity, corning Inc. NY) were constructed as described previously (Fig. 1) (Oh et al., 2009). The anode and cathode compartments were separated by a PEM (3.5 cm² cross section, Nafion™ 117, DuPont Co., Delaware, USA), and the working volume of each chamber was 200 mL. The PEM was pretreated and stored in deionized (DI) water prior to being used as mentioned elsewhere (Oh and Logan, 2006). For the MFC where potassium ferricyanide was used as the terminal electron acceptor, both the anode and cathode electrodes (2.5cm × 4cm; 10cm²) were made of carbon paper (NARA, Guro-GU, Seoul, South Korea). Whereas in case of oxygen as terminal electron acceptor, the cathode electrode was coated with a Pt-catalyst (0.5 mg/cm²) on one side (De Nora North America, Inc.). Pretreatment of electrodes and electrical connections were done as previously mentioned (Oh and Logan, 2006).

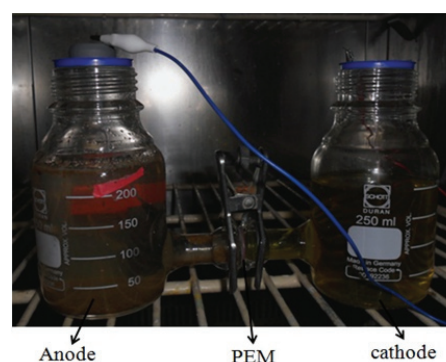


Fig. 1 Picture of two-chamber H-type MFC system used in this experiment

Inoculation and operation of MFCs

All MFCs were inoculated with anaerobically digested swine wastewater collected from a local pig farm in Anseong, Gyeonggi Province, Korea. Initially 5 mL swine wastewater was inoculated in a nutrient mineral buffer (NMB) solution together with 1 g/L acetate. The NMB medium consisted of: NaHCO_3 (3.13 g L^{-1}), NH_4Cl (0.31 g L^{-1}), $\text{NaH}_2\text{PO}_4 \cdot \text{H}_2\text{O}$ (0.75 g L^{-1}), KCl (0.13 g L^{-1}), NaH_2PO_4 (4.22 g L^{-1}), Na_2HPO_4 (2.75 g L^{-1}), and trace metal and vitamin solutions were also added as previously described in Oh *et al.* (2004).

The anode and cathode compartments were filled with the same medium (200 mL); NMB solution. The anode chamber was flushed with N_2 (80%) for 5 min and then sealed with a rubber stopper and cap. In the case of oxygen as terminal electron acceptor, the cathode chamber was continuously sparged with air, whereas the cathode chamber was filled with 50 mM $\text{K}_3\text{Fe}(\text{CN})_6$ where $\text{K}_3\text{Fe}(\text{CN})_6$ was used as the terminal electron acceptor. All MFC tests were operated at a fixed external circuit resistance (1,000 Ω unless stated otherwise). The MFC experiments were conducted in a constant temperature (30°C) by placing in the temperature controlling incubator.

Analyses and calculations

Each MFC system was monitored using a precision multi-meter and a data acquisition system (2700, Keithley, OH) with a voltage across resistor recorded every 30 min. The potential of the individual electrodes was measured by an Ag/AgCl reference electrode (0.195; corrected to a normal hydrogen electrode, NHE). Polarization curves were obtained using an IviumStat electrochemical analyzer (IVIUM Technology, the Netherlands). Polarization curves were produced by sweeping current values covering the range of 0.05–0.65 mA. Power (P) was calculated according to $P=IV$ ($I=V/R$), where I (A) is the current, V (v) is the voltage, and R (Ω) is the external resistance. The power density (PD) was calculated as previously described by Logan *et al.* (2006), in which the power output is normalized to the projected anode surface area. The coulombic efficiency (CE) (%) was calculated as previously described by Oh and Logan (2006).

All data were expressed as mean value (\pm) standard deviation of the number of experiments using Microsoft Excel Software 2007. One-way analysis of variance (ANOVA) was used to determine the significance of differences in the average voltage production and

power density using different electron donors and acceptors. To compare whether the average values are significantly different or not, least significant difference (LSD) was calculated at $\alpha=0.05$ as described in Little and Hills (1978). Statistical significance was considered at $p<0.05$.

Results and discussion

Start-up and enrichment of the MFCs

Initially 1 g/L acetate was fed to the MFCs in order to reach a reproducible state of the MFCs and to achieve enrichment of the anodic electrode with electrochemically active bacteria. As depicted in the **Fig. 2(a and b)** there were observations of lag phase approximately 45–50 h during the start-up period. When a stable voltage was generated, the anodic solution in the MFC systems was replaced with fresh NMB solution and 0.1 g/L acetate. The open circuit voltage (OCV) of 0.766 \pm 0.001 V was obtained using oxygen as reducing agent in the cathode chamber. Similarly, with $\text{K}_3\text{Fe}(\text{CN})_6$ as the reducing agent, the OCV stabilized to 0.81 V after nearly 9 h. The anode and cathode potentials of the air-cathode MFCs were found to be -0.525 and 0.225 V, respectively. Whereas, with $\text{K}_3\text{Fe}(\text{CN})_6$ as terminal electron acceptor, the anode and cathode potentials were -0.442 and 0.371 V, respectively.

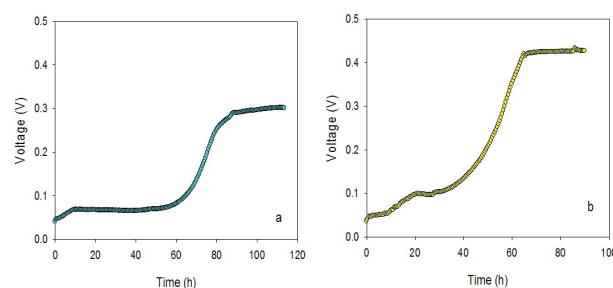


Fig. 2. Enrichment of the MFCs using (a) oxygen and (b) ferricyanide as the electron acceptors

Electricity generation using different substrates and catholytes

After achieving a stable reproducible voltage of the MFCs, the culture medium in the anode chamber was replaced with fresh medium (NMB solution) and 0.1 g/L acetate was added. **Fig. 3a** depicts the voltage generation with oxygen as terminal electron acceptor at a fixed external load (1000 Ω). When 0.1 g/L of acetate was added into the MFCs, stable voltage was

reproduced within short period of time in the system. It might be due to the presence of certain bacteria with electricity generating activity that was obviously present in the attached microbial consortium at the anodic electrode. When the cell potential decreased below 0.06 V, the anodic chamber was replenished with 0.1 g/L acetate.

Two cycles of replacing were investigated. However, there was no much difference in cell potential output in each cycle where the steady cell potential was observed and registered at a maximum value of 0.301 ± 0.009 V, suggesting the steady state of the MFCs. Thus, the average voltage of 0.26 ± 0.014 V and the power of 0.06 mW were achieved at 1000Ω with air-cathode. Relatively higher CE of $63 \pm 5.4\%$ was obtained using air-cathode. The voltage and the CE obtained in this study with acetate were comparable to the previous MFCs studies (Jung and Regan, 2007; Oh and Logan, 2006; Oh et al., 2004).

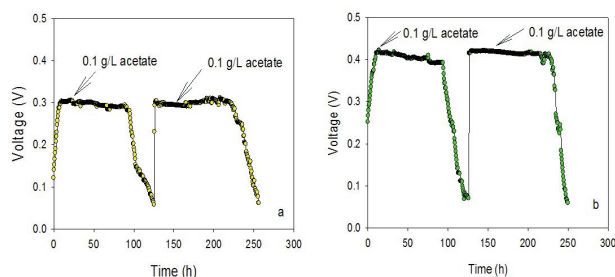


Fig. 3. Voltage generation from MFCs with (a) oxygen and (b) ferricyanide as the electron acceptors in the cathode compartments using 0.1 g/L acetate

Fig. 3b shows the voltage generation using $K_3Fe(CN)_6$ as the catholyte at the external load (1000Ω). With $K_3Fe(CN)_6$ as the terminal electron acceptor, the power increased as compared to oxygen as the catholyte, and the maximum voltage stabilized at 0.412 ± 0.006 V. The average voltage of 0.36 ± 0.02 V and the power 0.13 mW were achieved, respectively. With $K_3Fe(CN)_6$ as the catholyte the CE increased significantly ($84 \pm 5.4\%$). The working voltage obtained in this study was lower than reported by the previous MFC studies (Zhang et al., 2011). Zhang et al (2011) obtained the working voltage of 505 ± 5 mV (at 1000Ω) using $K_3Fe(CN)_6$ as the catholyte with acetate. However, the CE obtained in the current study was much higher than the CE obtained by Zhang et al (2011). The statistical analysis showed significant differences in the voltage production using oxygen and $K_3Fe(CN)_6$

as reducing agents in the cathode. Use of $K_3Fe(CN)_6$ as the reducing agent was highly significant and produced higher voltage as compared to oxygen as reducing agent with acetate as substrate ($p < 0.05$).

In order to investigate the voltage generation with glucose as substrate, both the anodic and cathodic compartments were replaced with fresh NMB solution. 0.1 g/L glucose was added in the anode chamber. As shown in the **Fig.4 (a and b)**, the cell potential increased steadily and stabilized the maximum voltage after 8-10 h. The voltages obtained using glucose were similar to that of acetate using oxygen and the $K_3Fe(CN)_6$ as the terminal electron acceptors. The average voltages of 0.256 ± 0.05 and 0.340 ± 0.04 V were obtained using oxygen and $K_3Fe(CN)_6$, respectively. Relatively lower CEs were obtained using glucose as substrate in the MFCs. The CEs were 40 ± 5 and $59 \pm 4\%$, respectively, with oxygen and $K_3Fe(CN)_6$ as the terminal electron acceptors. The statistical analysis showed significant differences in the voltage production using oxygen and $K_3Fe(CN)_6$ as reducing agents in the cathode with glucose as substrate. Use of oxygen as the reducing agent produced significantly lower voltage as compared to $K_3Fe(CN)_6$ as the reducing agent ($p < 0.05$).

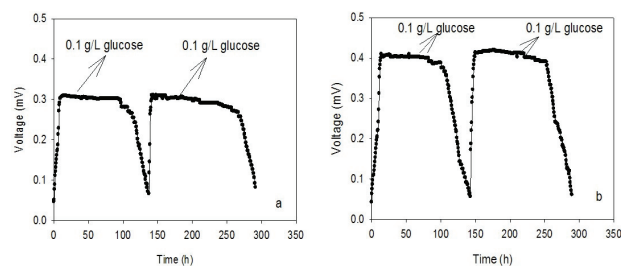


Fig. 4. Voltage generation from MFCs with (a) oxygen and (b) ferricyanide as the electron acceptors in the cathode compartments using 0.1 g/L glucose

Polarization characteristics of the MFCs

Furthermore, the effects of catholyte on power generation were investigated by drawing polarization curves. **Fig.5a** shows the polarization curve for the air-cathode with 0.1 g/L acetate. The maximum power density of 124 mW/m^2 was obtained corresponding to the maximum current density of 350 mA/m^2 . **Fig.5b** shows the polarization curve for the $K_3Fe(CN)_6$ as the catholyte. The maximum power density of 204 mW/m^2 was obtained corresponding to the maximum current density of 550 mA/m^2 . **Fig.6 (a and b)** represents the polarization curves with oxygen and

$K_3Fe(CN)_6$ as the electron acceptors using 0.1 g/L glucose. The maximum power densities of 99 and 168 mW/m^2 were obtained using oxygen and $K_3Fe(CN)_6$, respectively.

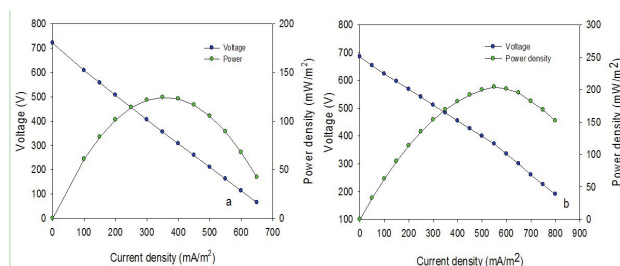


Fig. 5. Polarization curves for the MFCs under different catholytes; (a) oxygen and (b) ferricyanide with 0.1 g/L acetate

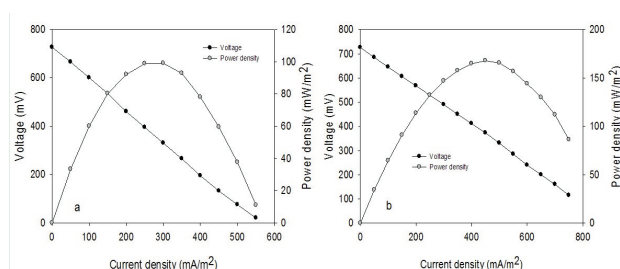


Fig. 6. Polarization curves for the MFCs under different catholytes; (a) oxygen and (b) ferricyanide with 0.1 g/L glucose

Although voltages generation using acetate and glucose are almost equal, relatively higher power densities were obtained with acetate. The use of $K_3Fe(CN)_6$ as the catholyte instead of dissolved oxygen increased the power output by 39 and 43% with acetate and glucose, respectively. $K_3Fe(CN)_6$ is an excellent catholyte which has higher mass transfer efficiencies and increased the power output by 1.5 to 1.8 times compared to Pt-catalyst cathode and dissolved oxygen in a H-type two chambered MFC (Logan *et al.*, 2006; Oh *et al.*, 2004). The statistical analyses showed significant differences between the oxygen and $K_3Fe(CN)_6$ as the reducing agents and the power density is also greatly affected by the type of electron acceptors. With both acetate and glucose, use of $K_3Fe(CN)_6$ significantly produced higher power densities ($p < 0.05$). Whereas, use of oxygen produced lower power density as compared to $K_3Fe(CN)_6$ ($p < 0.05$). Thus, use of $K_3Fe(CN)_6$ as reducing agent in the cathodic chamber can improve the voltage generation.

Conclusions

This study demonstrates that power generation from the MFCs can be influenced significantly by the different types of catholyte. With $K_3Fe(CN)_6$ as the catholyte, the power output increased by 39 and 43% with acetate and glucose, respectively, as compared to the dissolved oxygen as the catholyte. Relatively higher CE was obtained with $K_3Fe(CN)_6$. The maximum power density of 204 mW/m^2 corresponding to the maximum current density of 550 mA/m^2 was obtained with $K_3Fe(CN)_6$ with acetate. Whereas the maximum power density of 168 mW/m^2 corresponding to the maximum current density of 450 mA/m^2 was obtained with glucose. Thus, application of $K_3Fe(CN)_6$ as the catholyte can be vital for scaling up power generation from the MFCs for real time applications.

Acknowledgement

This study was supported by the Basic Science Research Program through the National Research Foundation of Korea (NRF) funded by the Ministry of Education, Science and Technology (2010-0013038), and by the Institute of Environmental Research at Kangwon National University.

References

- Basu, D., Basu, S., 2010. A study on direct glucose and fructose alkaline fuel cell. *Electrochim. Acta* 55, 5775-5779.
- Chae, K.-J., Choi, M.-J., Lee, J.-W., Kim, K.-Y., Kim, I.S., 2009. Effect of different substrates on the performance, bacterial diversity, and bacterial viability in microbial fuel cells. *Bioresour. Technol.* 100, 3518-3525.
- Gil, G.-C., Chang, I.-S., Kim, B.H., Kim, M., Jang, J.-K., Park, H.S., Kim, H.J., 2003. Operational parameters affecting the performance of a mediator-less microbial fuel cell. *Biosens. Bioelectron.* 18, 327-334.
- Jeremiase, A.W., Hamelers, H.V.M., Buisman, C.J.N., 2010. Microbial electrolysis cell with a microbial biocathode. *Bioelectrochem.* 78, 39-43.
- Jung, S., Regan, J., 2007. Comparison of anode bacterial communities and performance in microbial fuel cells with different electron donors. *Appl. Microbiol. Biotechnol.* 77, 393-402.
- Little, T.M., Hills, F.J., 1978. *Agricultural Experimentation: Design and Analysis*. John Wiley and Sons, Inc.,

- NY: USA.
- Liu, H., Cheng, S., Logan, B.E., 2005. Power Generation in Fed-Batch Microbial Fuel Cells as a Function of Ionic Strength, Temperature, and Reactor Configuration. *Environ. Sci. Technol.* 39, 5488-5493.
- Liu, Z., Liu, J., Zhang, S., Su, Z., 2009. Study of operational performance and electrical response on mediator-less microbial fuel cells fed with carbon- and protein-rich substrates. *Biochem. Eng. J.* 45, 185-191.
- Logan, B.E., Hamelers, B., Rozendal, R., Schroder, U., Keller, J., Freguia, S., Aelterman, P., Verstraete, W., Rabaey, K., 2006. Microbial fuel cells: Methodology and technology. *Environ. Sci. Technol.* 40, 5181-5192.
- Logan, B.E., Regan, J.M., 2006. Microbial fuel cells - Challenges and applications. *Environ. Sci. Technol.* 40, 5172-5180.
- Lu, N., Zhou, S., Zhuang, L., Zhang, J., Ni, J., 2009. Electricity generation from starch processing wastewater using microbial fuel cell technology. *Biochem. Eng. J.* 43, 246-251.
- Mohan, S.V., Raghavulu, S.V., Shrikanth, S., Sarma, P.N., 2007. Bioelectricity production by mediatorless microbial fuel cell under acidophilic condition using wastewater as substrate: influence of substrate loading rate. *Curr. Sci.* 92, 1720-1726.
- Mohan, Y., Manoj Muthu Kumar, S., Das, D., 2008. Electricity generation using microbial fuel cells. *Int. J. Hydrogen Energy* 33, 423-426.
- Oh, S.-E., Logan, B., 2006. Proton exchange membrane and electrode surface areas as factors that affect power generation in microbial fuel cells. *Appl. Microbiol. Biotechnol.* 70, 162-169.
- Oh, S., Logan, B.E., 2005. Hydrogen and electricity production from a food processing wastewater using fermentation and microbial fuel cell technologies. *WaterRes.* 39, 4673-4682.
- Oh, S.E., Kim, J.R., Joo, J.H., Logan, B.E., 2009. Effects of applied voltages and dissolved oxygen on sustained power generation by microbial fuel cells. *Water. Sci. Technol.* 60, 1311-1317.
- Oh, S.E., Min, B., Logan, B.E., 2004. Cathode Performance as a Factor in Electricity Generation in Microbial Fuel Cells. *Environ. Sci. Technol.* 38, 4900-4904.
- Pant, D., Van Bogaert, G., Diels, L., Vanbroekhoven, K., 2010. A review of the substrates used in microbial fuel cells (MFCs) for sustainable energy production. *Bioresour. Technol.* 101, 1533-1543.
- Rabaey, K., Verstraete, W., 2005. Microbial fuel cells: Novel biotechnology for energy generation. *Trends Biotechnol.* 23, 291-298.
- Selemba, P.A., Merrill, M.D., Logan, B.E., 2009. The use of stainless steel and nickel alloys as low-cost cathodes in microbial electrolysis cells. *J. Power Sources* 190, 271-278.
- Tran, H.T., Kim, D.H., Oh, S.J., Rasool, K., Park, D.H., Zhang, R.H., Ahn, D.H., 2009. Nitrifying biocathode enables effective electricity generation and sustainable wastewater treatment with microbial fuel cell. *Water Sci. Technol.* 59, 1803-1808.
- Zhang, Y., Min, B., Huang, L., Angelidaki, I., 2011. Electricity generation and microbial community response to substrate changes in microbial fuel cell. *Bioresour. Technol.* 102, 1166-1173.