

Clinical Article

Effect of Cisternal Drainage on the Shunt Dependency Following Aneurysmal Subarachnoid Hemorrhage

Sung Hun Kim, M.D.,¹ Pil-Wook Chung, M.D.,² Yu Sam Won, M.D.,³ Young Joon Kwon, M.D.,³ Hyun Chul Shin, M.D.,³ Chun Sik Choi, M.D.³

Department of Neurology,¹ College of Medicine, Kangwon National University, Chuncheon, Korea

Departments of Neurology,² Neurosurgery,³ Kangbuk Samsung Hospital, Sungkyunkwan University School of Medicine, Seoul, Korea

Objective : Shunt-dependent chronic hydrocephalus (SDCH) is known to be a major complication associated with aneurysmal subarachnoid hemorrhage (aSAH). Old age is known to be one of numerous factors related to the development of SDCH. This study investigated whether postoperative cisternal drainage affects the incidence of SDCH and clinical outcome in elderly patients with aSAH.

Methods : Fifty-nine patients participated in this study. All patients underwent aneurysmal clipping with cisternal cerebrospinal fluid (CSF) drainage. Clinical variables relevant to the study included age, sex, location of ruptured aneurysm, CT finding and clinical state on admission, clinical outcome, and CSF drainage. We first divided patients into two groups according to age (<70 years of age and ≥70 years of age) and compared the two groups. Secondly, we analyzed variables to find factors associated with SDCH in both groups (<70 years of age and ≥70 years of age).

Results : Of 59 patients, SDCH was observed in 20 patients (33.9%), who underwent shunt placement for treatment of hydrocephalus. Forty seven percent of cases of acute hydrocephalus developed SDCH. In the elderly group (≥70 years of age), the duration and amount of CSF drainage did not affect the development of chronic hydrocephalus.

Conclusion : In elderly patients, although the incidence of SDCH was significantly higher, clinical outcome was acceptable. The duration and the amount of cisternal drainage did not seem to be related to subsequent development of chronic hydrocephalus within elderly patients aged 70 or older.

Key Words : Aneurysmal subarachnoid hemorrhage · Acute hydrocephalus · Shunt-dependent chronic hydrocephalus · Old age · Intraventricular hemorrhage.

INTRODUCTION

Shunt-dependent chronic hydrocephalus (SDCH) is a well-known sequelae of aneurysmal subarachnoid hemorrhage (aSAH). The incidence of SDCH in patients of all ages after aSAH ranges from 10 to 48%^{4,12,32,36,38}. Numerous factors have been reported as being associated with the occurrence of chronic hydrocephalus after aSAH such as increasing age, hypertension, intraventricular hemorrhage (IVH), diffuse subarachnoid blood, posterior circulation aneurysm sites, focal ischemic deficits, large ventricles at the time of admission, poor Hunt-Hess and Fisher grades, symptomatic vasospasm, aneurysmal re-bleeding, and being of the female sex^{1,29,30,32,36}.

Because aging individuals are comprising and increasingly larger percentage of the general population, aSAH in elderly patients is becoming an issue of greater importance, and the

number of surgical procedures or intervention procedures performed in elderly patients with aSAH is increasing. Although coil embolization has been preferentially performed to date, elderly patients previously considered inoperable are now undergoing operations with acceptable rates of morbidity and mortality^{5,10,11,17}. SDCH after aSAH develops frequently in elderly patients. To improve the outcome in elderly patients with aSAH, an understanding of the pathophysiology of hydrocephalus after aSAH is very important.

Several mechanisms have been reported to explain the development of hydrocephalus among patients after aSAH. In some studies, aSAH appears to cause fibrosis of the leptomeninges and arachnoid granulation, leading to alterations in cerebrospinal fluid (CSF) dynamics, impaired CSF absorption, and chronic hydrocephalus¹⁻³. Acute hydrocephalus may occur via obstructive mechanisms when blood products or adhesions block

• Received : April 24, 2012 • Revised : July 12, 2012 • Accepted : November 22, 2012

• Address for reprints : Yu Sam Won, M.D.

Department of Neurosurgery, Kangbuk Samsung Hospital, Sungkyunkwan University School of Medicine, 29 Saemunan-ro, Jongno-gu, Seoul 110-746, Korea
Tel : +82-2-2001-2158, Fax : +82-2-2001-2157, E-mail : yusam.won@samsung.com

• This is an Open Access article distributed under the terms of the Creative Commons Attribution Non-Commercial License (<http://creativecommons.org/licenses/by-nc/3.0>) which permits unrestricted non-commercial use, distribution, and reproduction in any medium, provided the original work is properly cited.

CSF circulation within the ventricular system^{7,37}.

Cisternal drainage may remove remaining blood clots and improve CSF dynamics. Improved CSF flow may reduce subarachnoid fibrosis and vascular inflammation, thereby leading to decreased hydrocephalus. So, we performed a retrospective study on whether postoperative cisternal drainage affects the incidence of SDCH and clinical outcome in elderly patients with aSAH.

MATERIALS AND METHODS

Patient population

This study was based on a series of 179 patients consecutively diagnosed with aSAH at our hospital between January 2007 and November 2010. On admission, each patient's clinical condition was graded according to the Hunt-Hess grading scale and a computed tomography scan of each incidence of aSAH classified according to the Fisher grading system. Inclusion criteria were as follows: 1) patients with SAH due to anterior circulation aneurysm rupture and a Fisher grade of 3 or 4, 2) patients who underwent direct aneurysm clipping with cisternal drainage within 72 hours (Days 0-2) after ictus, 3) patients older than 18 years of age, 4) clinical Hunt-Hess grade of III or IV, and 5) patients without preoperative rebleeding or grave systemic complications. According to these criteria, 59 patients were included in the study. 120 patients were excluded due to posterior circulation (25), coiling (37), a Fisher grade of 2 (38), a Hunt-Hess grade of V (13), and preoperative external ventricular drainage (7). Acute hydrocephalus is defined as Evan's ratio >0.3 on brain CT scan at admission. SDCH is defined when requiring a shunt procedure.

Surgical procedures

After the aneurysm was clipped, removal of the remaining subarachnoid clot in the basal cistern and surrounding the M1 and a part of the M2 portion of the middle cerebral artery was performed. The prepontine clot was aspirated when possible after opening Liliequist's membrane. After the removal of the subarachnoid hematoma, a cisternal drainage tube was placed in the chiasmatic cistern or carotid cistern (Fig. 1). The opening pressure was set to 10 cm H₂O from the external auditory meatus in

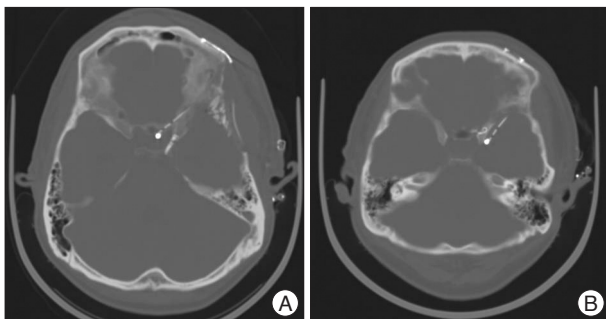


Fig. 1. Brain computed tomography shows cisternal drainage tube placed in the chiasmatic cistern (A) or carotid cistern (B).

the supine position and continuous drainage of CSF was performed. A cisternal drainage tube was removed on the 7th post-operative day or when it ceased to function due to obstruction. If necessary, lumbar drainage was performed. Daily drainage amount and drainage duration were measured and recorded.

Management protocol

All patients received standard pre- and post-operative management. All patients received CT angiography within the first 48 hours after aneurysm treatment to identify procedural complications and drainage tube location. Then, postoperative CT scans were performed every week before discharge or when/if the patient's neurological condition worsened. Transcranial doppler tests were performed every other day between day 4 and day 14 after aSAH and checked daily if a mean velocity in any insolated vessel was more than 150 cm/sec or if the patient exhibited clinical deterioration. When symptomatic cerebral vasospasm was suspected, we elevated mean blood pressure more than 20 % with the use of an inotropic agent and volume expander. Cerebral angiography was performed if neurologic state did not improve and, if needed, chemical or mechanical angioplasty was performed.

Clinical data

The clinical variables investigated were 1) age, 2) sex, 3) Fisher grade at admission, 4) clinical Hunt-Hess grade at admission, 5) presence of IVH, intracerebral hemorrhage (ICH), and subdural hematoma (SDH), 6) presence of hydrocephalus at admission, 7) the location of ruptured aneurysm, 8) CSF drainage amount and duration, 9) presence of symptomatic vasospasm, 10) SDCH, and 11) clinical outcome. The modified Rankin Scale (mRS) was used to describe the clinical outcome 3 months after occurrence of initial bleeding.

Statistical analysis

At first, we divided the study participants into two groups according to age (<70 years, ≥70 years) and compared the two groups. Secondly, we analyzed variables to find factors associated with SDCH in both groups (<70 years of age and ≥70 years of age). Statistical analysis was performed using PASW statistics 18.0 (IBM, Armonk, NY, USA). Data are presented as the median value, and statistical significance was defined as $p < 0.05$ for all comparisons. Statistical significance was analyzed with the chi-square test or Fisher exact for categorical variables and the independent-Samples Mann-Whitney U test for continuous variables. Multivariate analysis was not performed due to small sample size.

RESULTS

Fifty nine patients were studied. Patient ages ranged from 32 to 82 years. The study population consisted of 19 male (32.2%) and 40 female patients (67.8%). A ruptured aneurysm was locat-

ed on the anterior cerebral artery (ACA) in 21 patients (35.6%), the internal carotid artery (ICA) in 13 patients (22.0%), and the middle cerebral artery (MCA) in 25 patients (42.4%). According to preoperative clinical grading, 37 patients received a Hunt-Hess grade of III (62.7%) and 22 a Hunt-Hess grade of IV (37.3%). There were 31 patients with a Fisher grade of 3 (52.5%) and 26 patients with a Fisher grade of 4 (47.5%). Initial brain CT scan showed IVH in 11 patients (18.6%), ICH in 17 patients (28.8%), SDH in 3 patients (5.1%), and acute hydrocephalus in 19 patients (32.2%).

Two patients with postoperative cisternal CSF drainage suffered meningitis, which was successfully treated with antibiotic administration. The median duration of external CSF drainage in patients including cisternal and lumbar CSF drainage was 8 days. The median amount of CSF drained was 1011 mL, and 14 patients underwent external CSF drainage for over 10 days. SDCH was observed in 20 patients (33.9%) who then underwent shunt placement for treatment of hydrocephalus. Forty seven percent of cases of acute hydrocephalus progressed to SDCH. Symptomatic vasospasm was identified in 14 patients (23.7%). Symptoms due to vasospasm were transient in all patients.

Comparison between the two age groups

Table 1 shows comparison of the two age groups. There were no significant differences between the two groups in patient characteristics (Hunt-Hess grade, Fisher grade, the presence of IVH and ICH, and the incidence of symptomatic vasospasm) or CSF drainage (amount and duration). In the elderly group (≥ 70 years of age), the presence of acute hydrocephalus ($p=0.042$) and SDH ($p=0.041$), and the incidence of SDCH ($p=0.014$) were significantly higher. All patients in the elderly group were female. Location of ruptured aneurysm between the two groups was significantly different ($p=0.032$).

Factors related to shunt dependency within younger group (<70 years of age)

Results of univariate analysis are summarized in Table 2. There were marginally significant differences in cisternal CSF drainage amount and duration between patients with SDCH and without SDCH ($p=0.093$ and $p=0.078$, respectively). The other factors showed no sig-

nificant difference between two groups.

Factors related to shunt dependency within elderly group (≥ 70 years of age)

The sex variable was excluded because all patients in the elderly group (≥ 70 years of age) were female. Results of univariate analysis are summarized in Table 3. There was a significant difference only in location of ruptured aneurysm between patients with SDCH and without SDCH.

DISCUSSION

SDCH is a common complication after aSAH. Hydrocephalus after aSAH is classified according to the time of onset : 1) acute (0-3 days after aSAH), 2) subacute (4-13 days after aSAH), and 3) chronic hydrocephalus (≥ 14 days after aSAH). Although the precise mechanism leading to development of hydrocephalus after aSAH is not fully understood, acute hydrocephalus fol-

Table 1. Comparison between two age groups

Variables	No. of patients (%)		p-value
	Age <70 years old	Age ≥ 70 years old	
No. of patients	47	12	
Female	28 (59.6)	12 (100)	0.006*
Location of aneurysm			0.032*
ICA	7 (14.9)	6 (50)	
MCA	22 (46.8)	3 (25)	
ACA	18 (38.3)	3 (25)	
Hunt-Hess grade			0.308
III	31 (66.0)	6 (50)	
IV	16 (34.0)	6 (50)	
Fisher grade			0.653
3	24 (51.1)	7 (58.3)	
4	23 (48.9)	5 (41.7)	
IVH	8 (17.0)	3 (25.0)	0.526
ICH	14 (29.8)	3 (25.0)	0.524
SDH	1 (2.1)	2 (16.7)	0.041*
Acute hydrocephalus	12 (25.5)	7 (58.3)	0.042*
CSF drainage amount (mL, median)	1100	997	0.624
CSF drainage duration (days, median)	8	8	0.367
SDCH	12 (25.5)	8 (66.7)	0.014*
Symptomatic vasospasm	12 (25.5)	2 (16.7)	0.519
Clinical outcome (mRS)			0.109
0	20 (42.6)	0	
1	8 (17.0)	2 (16.7)	
2	6 (12.8)	5 (41.7)	
3	4 (8.5)	1 (8.3)	
4	4 (8.5)	2 (16.7)	
5	2 (4.3)	1 (8.3)	
6	3 (6.4)	1 (8.3)	

*Statistically significant. ICA : internal carotid artery, MCA: middle cerebral artery, ACA : anterior cerebral artery, IVH : intraventricular hemorrhage, ICH : intracerebral hemorrhage, SDH : subdural hematoma, CSF : cerebrospinal fluid, SDCH : shunt dependent chronic hydrocephalus, mRS : modified Rankin Scale

Table 2. Factors related to shunt dependency in younger group (age <70 years old)

Variables	No. of patients (%)		p-value
	Patients w/o SDCH	Patients with SDCH	
No. of patients	35	12	
Age (years, median)	53	51.5	0.951
Sex (female)	20 (57.15)	8 (66.7)	0.737
Location of aneurysm	0.124		
ICA	7 (20.0)	0	
MCA	17 (48.6)	5 (41.7)	
ACA	11 (31.4)	7 (58.3)	
Hunt-Hess grade			0.505
III	22 (62.9)	9 (75.0)	
IV	13 (37.1)	3 (25.0)	
Fisher grade			0.559
3	17 (48.6)	7 (58.3)	
4	18 (51.4)	5 (41.7)	
IVH	7 (20.0)	1 (8.3)	0.659
ICH	10 (28.6)	4 (33.3)	0.731
SDH	1 (2.9)	0	0.745
Acute hydrocephalus	9 (25.7)	3 (25.0)	0.641
CSF drainage amount (mL, median)	975.0	1558.0	0.093*
CSF drainage duration(days, median)	7.0	9.0	0.078*
Symptomatic vasospasm	10 (28.6)	2 (16.7)	0.703

*Marginally significant. SDCH : shunt dependent chronic hydrocephalus, ICA : internal carotid artery, MCA : middle cerebral artery, ACA : anterior cerebral artery, IVH : intraventricular hemorrhage, ICH : intracerebral hemorrhage, SDH : subdural hematoma, CSF : cerebrospinal fluid

Table 3. Factors related to shunt dependency in elderly patients (Age ≥70 years old)

Variables	No. of patients (%)		p-value
	Patients w/o SDCH	Patients with SDCH	
No. of patients	4	8	
Age (years, median)	77.0	76.5	0.921
Location of aneurysm			0.016*
ICA	1 (25.0)	5 (62.5)	
MCA	3 (75.0)	0	
ACA	0	3 (37.5)	
Hunt-Hess grade			0.545
III	1 (25.0)	5 (62.5)	
IV	3 (75.0)	3 (37.5)	
Fisher grade			0.222
3	1 (25.0)	6 (75.0)	
4	3 (75.0)	2 (25.0)	
IVH	0	3 (37.5)	0.491
ICH	2 (50.0)	1 (12.5)	0.236
SDH	1 (25.0)	1 (12.5)	0.576
Acute hydrocephalus	1 (25.5)	6 (75.0)	0.098
CSF drainage amount (mL, median)	874.5	1275.5	0.443
CSF drainage duration(days, median)	8.0	9.0	0.548
Symptomatic vasospasm	1 (25.5)	1 (12.5)	0.576

*Statistically significant. SDCH : shunt dependent chronic hydrocephalus, ICA : internal carotid artery, MCA : middle cerebral artery, ACA : anterior cerebral artery, IVH : intraventricular hemorrhage, ICH : intracerebral hemorrhage, SDH : subdural hematoma, CSF : cerebrospinal fluid

lowing aSAH is thought to result from blockage of CSF flow. Intraventricular clots and the high viscosity of the CSF block the ventricular foramina, inducing more resistance to CSF flow and increased ventricular flow^{2,7,33,34}. Also, the blood in the basal cistern and ventricle system increase CSF resistance, creating a pressure gradient and inducing hydrocephalus³⁷. The occurrence of aSAH can also cause fibrosis of leptomeninges and arachnoid granulation^{16,35}, which leads to diminished CSF absorption and chronic hydrocephalus requiring shunt treatment^{1-3,6,28,35}. Another hypothesis proposes that chronic hydrocephalus occurs due to fibrin and protein products in the blood in the arachnoid villi inhibiting absorption of CSF^{16,20}.

Age is thought to be a potential factor of chronic hydrocephalus following aSAH^{12,17,32,38}. In the elderly group in this study, SDCH occurred in 8 patients (66.7%). Numerous theories have been reported to explain the relationship between occurrence of chronic hydrocephalus and elderly patients. Due to wider subarachnoid spaces, older patients can hold larger amounts of subarachnoid blood, thus increasing their risk of developing CSF circulation disturbances⁴⁰. Also, with age, the extent of meningeal fibrosis increases, leading to impaired CSF circulation and decreased CSF absorption^{16,35}. Some investigators have suggested the importance of the minor CSF pathway, namely CSF absorption by the capillaries of the brain via the extracellular space within the parenchyma, as a potential factor leading to the occurrence of normal pressure hydrocephalus³². Chronic hydrocephalus can more frequently occur in elderly patients due to disturbance of the minor pathway within the parenchyma because patients of advanced age with aSAH are susceptible to cerebral ischemia. Others have postulated that the CSF circulation time is prolonged in elderly patients secondary to decreased CSF secretion, resulting in relative CSF stagnation²¹.

Generally, acute hydrocephalus ranges from 15 to 31% of patients having ex-

perienced aSAH^{8,22,23,31,38}). The presence of acute hydrocephalus, one of possible risk factors of SDCH after aSAH, was observed in 19 patients (33.9%) in this study, a higher percentage than that reported in current literature, perhaps due to the inclusion criteria of this study, specifically a Fisher grade of 3 or 4. Forty seven percent of patients with acute hydrocephalus developed SDCH. After comparing the two age groups, the presence of acute hydrocephalus in the elderly group (≥ 70 years of age) was found to be significantly higher than in the younger group (< 70 years of age). In the elderly group, acute hydrocephalus developed in 7 patients and progressed to SDCH in all except 1 patient (86%).

As previously mentioned, the effect of IVH on the development of acute hydrocephalus may be that IVH leads to an obstructive form of hydrocephalus^{2,7,33,34}. In this study, 36% of patients with IVH developed SDCH. Between the two age groups, there was no significant difference in the presence of IVH.

In this study, there was a significant difference in the location of the ruptured aneurysm between the two age groups. In the elderly group, a ruptured ICA aneurysm occurred with greater frequency than ACA or MCA aneurysms. In 25 patients with a ruptured MCA aneurysm, IVH was not seen. There was acute hydrocephalus in 3 of 25 patients and chronic hydrocephalus in 1 of 25 patients. Various studies have reported a potential relationship between the location of the ruptured aneurysm and the development of hydrocephalus. Many authors reported that acute hydrocephalus develops less frequently in patients with an MCA aneurysm than in those with ACA, ICA or posterior circulation aneurysms^{25,26,40}. The low incidence rate in patients with MCA aneurysms may be explained by the fact that subarachnoid blood clots are relatively scarce in the contralateral sylvian fissure and interhemispheric fissures, therefore, the CSF circulation pathway in these areas is spared from possible obstruction to flow^{26,40}.

Cerebral vasospasm following aSAH constitutes one of the most serious complications affecting the prognosis of patients. It has been recommended that the removal of subarachnoid blood clots along the cerebral arteries can reduce cerebral vasospasm, but it is impossible to remove all blood clots. However, cisternal or lumbar drainage has been reported as a useful procedure to remove bloody CSF and to improve the prognosis through prophylaxis and relief of vasospasm¹²⁻¹⁵. The effects of cisternal drainage for the development of SDCH are not clear. Some authors reported that the need for shunt operation was greater in patients with cisternal drainage, especially in those with high-volume drainage or cisternal drainage which seemed to exacerbate subarachnoid fibrosis and impair CSF absorption^{9,18,24,27}. Conversely, some authors reported that early aneurysmal surgery and washout of bloody CSF lessened the risk of subsequent subarachnoid fibrosis and impaired CSF outflow^{19,39}. In this study, cisternal drainage was used in all patients, being expected to eliminate residual subarachnoid clots and spasmogens in the CSF from the cistern and promote CSF circulation. In univariate

analysis of factors related to shunt dependency within younger group (Table 2), SDCH was related to the longer duration and the more amount of CSF drainage with marginal significance, but in elderly group (Table 3), The duration and the amount of cisternal drainage was not related to SDCH.

Elderly patients (≥ 70 years of age) have been reported to show a worse outcome than younger patients because of poor recovery from primary brain damage, more severe cerebral ischemia due to vascular narrowing, frequent systemic complications, and low cerebral compliance^{10,11,17}. However, there was no significant difference in clinical outcome between the two age groups in this study. Although no one patient recovered fully, 8 patients showed favorable outcomes. The mRS score of 3 indicates moderate disability with the patient requiring some help but having the ability to walk unassisted.

The limitations of this study were the small sample size and a selected population who received cisternal drainage. Multivariate analysis could not be performed to determine the effect of each variable on the development of SDCH. In this study, we excluded the patients with a good clinical state (Hunt-Hess grade of I or II), dismal state (Hunt-Hess grade of V), or mild aSAH (Fisher grade of 1 or 2) to decrease confounding factors.

CONCLUSION

In univariate analysis of factors related to shunt dependency within younger group, SDCH was related to the longer duration and the more amount of CSF drainage with marginal significance. In elderly patients, although the incidence of SDCH was significantly higher, clinical outcome was acceptable. The duration and the amount of cisternal drainage did not seem to be related to chronic hydrocephalus in elderly patients. SDCH occurred more frequently in elderly patients with ACA or ICA aSAH. We speculated that acute hydrocephalus and IVH, accompanied with ACA or ICA aSAH, affected the rate of occurrence of chronic hydrocephalus.

References

1. Auer LM, Mokry M : Disturbed cerebrospinal fluid circulation after subarachnoid hemorrhage and acute aneurysm surgery. *Neurosurgery* 26 : 804-808; discussion 808-809, 1990
2. Black PM, Tzouras A, Foley L : Cerebrospinal fluid dynamics and hydrocephalus after experimental subarachnoid hemorrhage. *Neurosurgery* 17 : 57-62, 1985
3. Dóczy T, Nemessányi Z, Szegváry Z, Huszka E : Disturbances of cerebrospinal fluid circulation during the acute stage of subarachnoid hemorrhage. *Neurosurgery* 12 : 435-438, 1983
4. Dorai Z, Hynan LS, Kopitnik TA, Samson D : Factors related to hydrocephalus after aneurysmal subarachnoid hemorrhage. *Neurosurgery* 52 : 763-769; discussion 769-771, 2003
5. Fridriksson SM, Hillman J, Säveland H, Brandt L : Intracranial aneurysm surgery in the 8th and 9th decades of life: impact on population-based management outcome. *Neurosurgery* 37 : 627-631; discussion 631-632, 1995
6. Gjerris F, Børgesen SE, Sørensen PS, Boesen F, Schmidt K, Harmsen A,

- et al. : Resistance to cerebrospinal fluid outflow and intracranial pressure in patients with hydrocephalus after subarachnoid haemorrhage. *Acta Neurochir (Wien)* 88 : 79-86, 1987
7. Hasan D, Tanghe HL : Distribution of cisternal blood in patients with acute hydrocephalus after subarachnoid hemorrhage. *Ann Neurol* 31 : 374-378, 1992
 8. Hasan D, Vermeulen M, Wijdicks EF, Hijdra A, van Gijn J : Management problems in acute hydrocephalus after subarachnoid hemorrhage. *Stroke* 20 : 747-753, 1989
 9. Hirashima Y, Hamada H, Hayashi N, Kuwayama N, Origasa H, Endo S : Independent predictors of late hydrocephalus in patients with aneurysmal subarachnoid hemorrhage--analysis by multivariate logistic regression model. *Cerebrovasc Dis* 16 : 205-210, 2003
 10. Inagawa T : Cerebral vasospasm in elderly patients treated by early operation for ruptured intracranial aneurysms. *Acta Neurochir (Wien)* 115 : 79-85, 1992
 11. Inagawa T : Cerebral vasospasm in elderly patients with ruptured intracranial aneurysms. *Surg Neurol* 36 : 91-98, 1991
 12. Inagawa T, Kamiya K, Matsuda Y : Effect of continuous cisternal drainage on cerebral vasospasm. *Acta Neurochir (Wien)* 112 : 28-36, 1991
 13. Kasuya H, Shimizu T, Kagawa M : The effect of continuous drainage of cerebrospinal fluid in patients with subarachnoid hemorrhage : a retrospective analysis of 108 patients. *Neurosurgery* 28 : 56-59, 1991
 14. Kawakami Y, Shimamura Y : Cisternal drainage after early operation of ruptured intracranial aneurysm. *Neurosurgery* 20 : 8-14, 1987
 15. Klimo P Jr, Kestle JR, MacDonald JD, Schmidt RH : Marked reduction of cerebral vasospasm with lumbar drainage of cerebrospinal fluid after subarachnoid hemorrhage. *J Neurosurg* 100 : 215-224, 2004
 16. Kosteljanetz M : CSF dynamics in patients with subarachnoid and/or intraventricular hemorrhage. *J Neurosurg* 60 : 940-946, 1984
 17. Lanzino G, Kassell NF, Germanson TP, Kongable GL, Truskowski LL, Torner JC, et al. : Age and outcome after aneurysmal subarachnoid hemorrhage : why do older patients fare worse? *J Neurosurg* 85 : 410-418, 1996
 18. Lee WC, Choi CH : The analysis of the need rate of shunt and outcome in hydrocephalus following SAH. *J Korean Neurosurg Soc* 30 : 99-107, 2001
 19. Ljunggren B, Brandt L, Kågström E, Sundbärg G : Results of early operations for ruptured aneurysms. *J Neurosurg* 54 : 473-479, 1981
 20. Massicotte EM, Del Bigio MR : Human arachnoid villi response to subarachnoid hemorrhage : possible relationship to chronic hydrocephalus. *J Neurosurg* 91 : 80-84, 1999
 21. May C, Kaye JA, Atack JR, Schapiro MB, Friedland RP, Rapoport SI : Cerebrospinal fluid production is reduced in healthy aging. *Neurology* 40 : 500-503, 1990
 22. Mehta V, Holness RO, Connolly K, Walling S, Hall R : Acute hydrocephalus following aneurysmal subarachnoid hemorrhage. *Can J Neurol Sci* 23 : 40-45, 1996
 23. Milhorat TH : Acute hydrocephalus after aneurysmal subarachnoid hemorrhage. *Neurosurgery* 20 : 15-20, 1987
 24. Ohwaki K, Yano E, Nakagomi T, Tamura A : Relationship between shunt-dependent hydrocephalus after subarachnoid haemorrhage and duration of cerebrospinal fluid drainage. *Br J Neurosurg* 18 : 130-134, 2004
 25. O'Kelly CJ, Kulkarni AV, Austin PC, Urbach D, Wallace MC : Shunt-dependent hydrocephalus after aneurysmal subarachnoid hemorrhage: incidence, predictors, and revision rates. Clinical article. *J Neurosurg* 111 : 1029-1035, 2009
 26. Pietilä TA, Heimberger KC, Palleke H, Brock M : Influence of aneurysm location on the development of chronic hydrocephalus following SAH. *Acta Neurochir (Wien)* 137 : 70-73, 1995
 27. Reilly C, Amidei C, Tolentino J, Jahromi BS, Macdonald RL : Clot volume and clearance rate as independent predictors of vasospasm after aneurysmal subarachnoid hemorrhage. *J Neurosurg* 101 : 255-261, 2004
 28. Sajanti J, Heikkinen E, Majamaa K : Transient increase in procollagen propeptides in the CSF after subarachnoid hemorrhage. *Neurology* 55 : 359-363, 2000
 29. Schmieder K, Koch R, Lücke S, Harders A : Factors influencing shunt dependency after aneurysmal subarachnoid haemorrhage. *Zentralbl Neurochir* 60 : 133-140, 1999
 30. Sheehan JP, Polin RS, Sheehan JM, Baskaya MK, Kassell NF : Factors associated with hydrocephalus after aneurysmal subarachnoid hemorrhage. *Neurosurgery* 45 : 1120-1127; discussion 1127-1128, 1999
 31. Suarez-Rivera O : Acute hydrocephalus after subarachnoid hemorrhage. *Surg Neurol* 49 : 563-565, 1998
 32. Tapaninaho A, Hernesniemi J, Vapalahti M, Niskanen M, Kari A, Luukkonen M, et al. : Shunt-dependent hydrocephalus after subarachnoid haemorrhage and aneurysm surgery : timing of surgery is not a risk factor. *Acta Neurochir (Wien)* 123 : 118-124, 1993
 33. Todo T, Usui M, Takakura K : Treatment of severe intraventricular hemorrhage by intraventricular infusion of urokinase. *J Neurosurg* 74 : 81-86, 1991
 34. Tomasello F, d'Avella D, de Divitiis O : Does lamina terminalis fenestration reduce the incidence of chronic hydrocephalus after subarachnoid hemorrhage? *Neurosurgery* 45 : 827-831; discussion 831-832, 1999
 35. Torvik A, Bhatia R, Murthy VS : Transitory block of the arachnoid granulations following subarachnoid haemorrhage. A postmortem study. *Acta Neurochir (Wien)* 41 : 137-146, 1978
 36. Vale FL, Bradley EL, Fisher WS 3rd : The relationship of subarachnoid hemorrhage and the need for postoperative shunting. *J Neurosurg* 86 : 462-466, 1997
 37. van Gijn J, Hijdra A, Wijdicks EF, Vermeulen M, van Crevel H : Acute hydrocephalus after aneurysmal subarachnoid hemorrhage. *J Neurosurg* 63 : 355-362, 1985
 38. Vermeij FH, Hasan D, Vermeulen M, Tanghe HL, van Gijn J : Predictive factors for deterioration from hydrocephalus after subarachnoid hemorrhage. *Neurology* 44 : 1851-1855, 1994
 39. Yong CI, Hwang SK, Kim SH : The role of lumbar drainage to prevent shunt-dependent hydrocephalus after coil embolization for aneurysmal subarachnoid hemorrhage in good-grade patients. *J Korean Neurosurg Soc* 48 : 480-484, 2010
 40. Yoshioka H, Inagawa T, Tokuda Y, Inokuchi F : Chronic hydrocephalus in elderly patients following subarachnoid hemorrhage. *Surg Neurol* 53 : 119-124; discussion 124-125, 2000