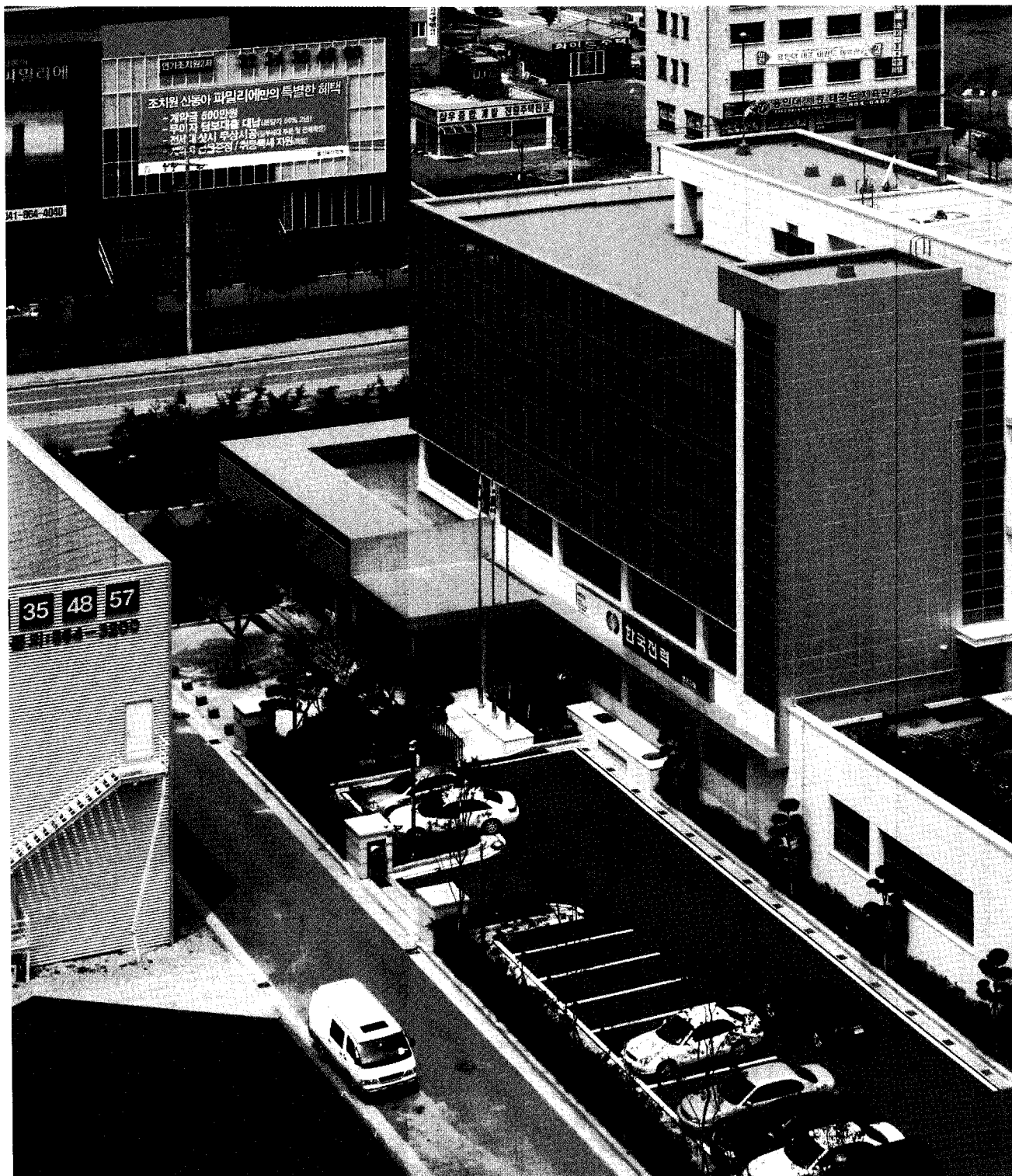
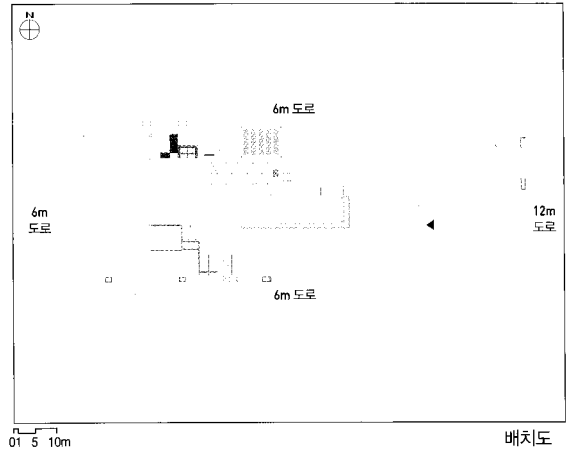


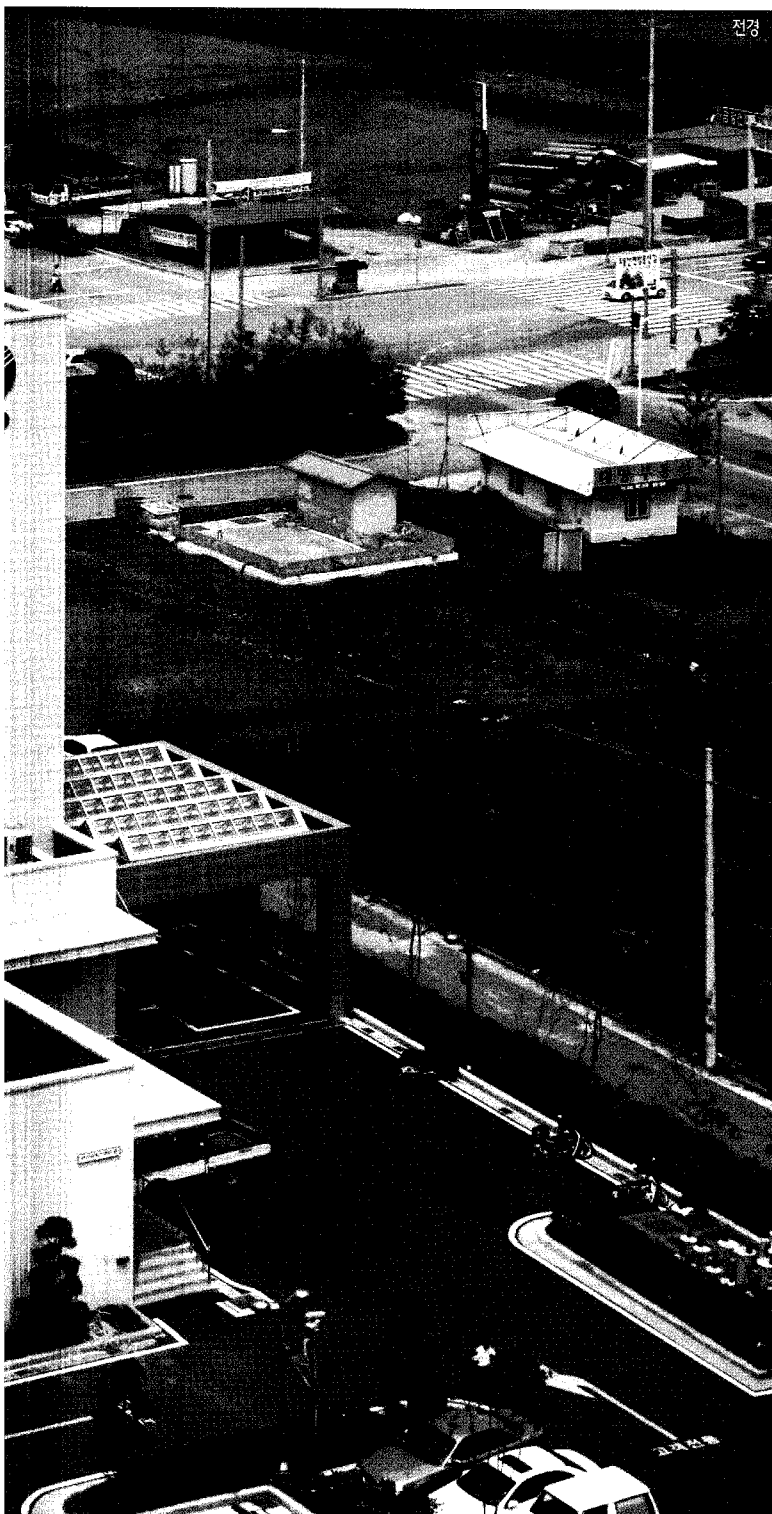
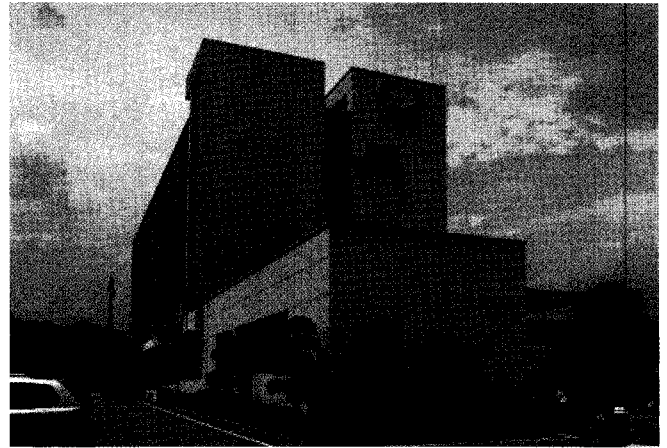
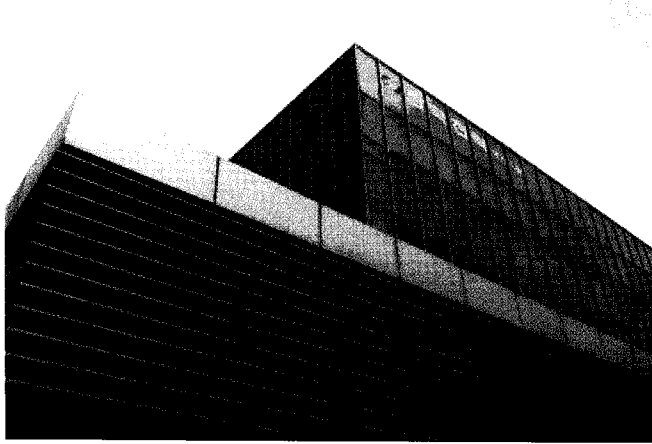
The Yeongi Branch of KEPCO

한국전력공사 연기지점

Project Team | Oh, Seong-hyun / Kwon, Kee-don / Um, Jong-chul /  
 Kim, Hyun-chul / Hong, Eun-hwa  
 Client | Korea Electric Power Corporation  
 Location | Chungcheongnam-do Yeongi-gun Jochiwon-eub Chimsan-ri 271  
 Site Area | 4,285.60m<sup>2</sup> Building Area | 1,148.27m<sup>2</sup>  
 Gross Floor Area | 2,987.30m<sup>2</sup> Building to Land Ratio | 26.79%  
 Floor Area Ratio | 61.83% Structure | R.C  
 Structural Engineer | not disclosed  
 HVAC Engineer | not disclosed  
 Building Scope | B1-4F  
 Electrical Engineer | not disclosed  
 Finishing Materials | not disclosed  
 Photographer | not disclosed Cost | not disclosed



최홍구 — 정혜원 · 양성중 (주)도담 건축사사무소  
 Architects — Choi, Hong-goo, KIRA · Yang, Sung-jung



일반 기업들 혹은 공기업들의 각 지역별 지점사옥들이 어떤 정형화된 틀속에 기본디자인을 만들어놓고 각 지점별로 적용하는 것에 비해 한국전력공사의 지점사옥은 지역 및 장소에 적합한 작품을 선별해 적용한다. 한국전력공사 연기지점 역시 현상설계를 통해 설계되고 시공된 건물이다.

38mx113m의 장방형의 대지를 주차와 본건물의 영역으로 구분하고 연기대로에서의 시각적 인 지성을 고려하여 서쪽으로 건물을 배치하고 동쪽으로 주차장을 배치하였다. 주차장은 인근 아파트단지와의 버퍼존의 역할을 하며, 차량접근시 자연스러운 차량동선을 유도한다.

지하 1층 지상 4층의 건물은 각각의 기능에 적합하도록 각 실은 층별로 그루핑되어있다. 민원인의 출입이 많은 영업요금과는 1층에 배치되고 영업요금과 주변으로 회랑과 조경을 계획하여 도로와의 경계부에 또하나의 공간을 창출하였다. 또한 최상층인 4층에는 식당, 체육단련장 등 후생시설을 집중배치하여 업무공간과 구분된 공간을 계획하여 업무공간과의 독립성 확보 및 이용률을 높일수 있도록 계획하였다

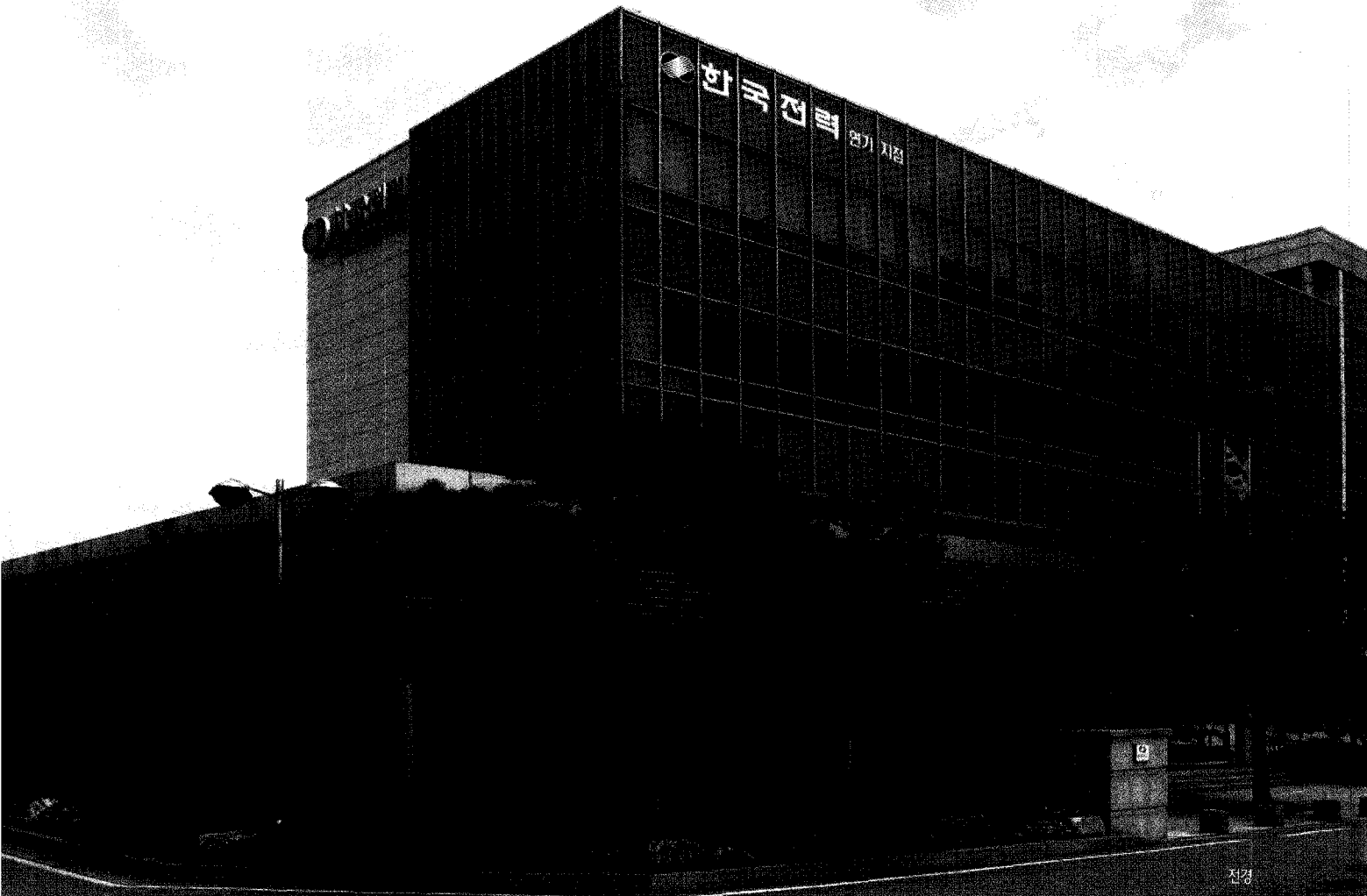
화강석과 유리커튼월로 마감된 입면은 반듯하고 매우 잘 정돈된 이미지를 주기 위함이며, 회랑부분의 수평루버 및 캐노피 등의 요소로 인해 변화를 가진다. 준공된 지 5년이 지났지만 촌스럽지 않은 모습으로 자리를 지켜줬듯이 앞으로 5년/10년이 지나더라도 항상 정갈하고 반듯한 모습으로 자리를 지켜주기를 바라는 마음이다.

Most of companies and public enterprises apply conventional form of basic design which they already had made to various sites of branch offices. Unlike these companies, KEPCO, Korean Electric Power Corporation, always adopt new design regarding the characteristics of site and surroundings. Yeongi branch office of KEPCO also selected and constructed through design competition.

The site, which is rectangular land(38mX113m), is divided into main building sector and parking area. To recognize the building easier from Yeongi High-way, the building is placed in the west of land, and parking area in the east. Parking area also plays a role as a buffer zone between building and residential area where the east side of the site, also making access to the building from outside easier.

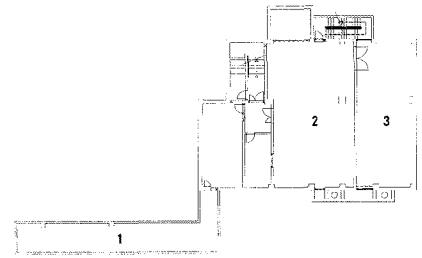
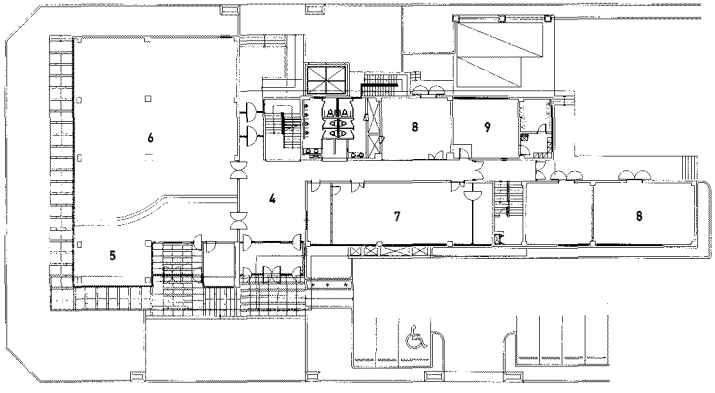
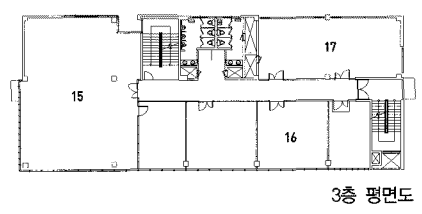
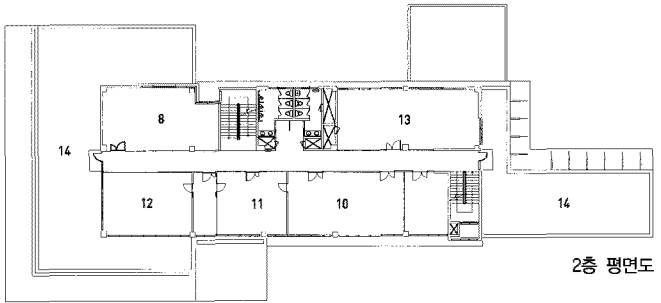
The offices are categorized according to their function into 5 groups and each group occupies respectively one floor of 5 story building (B1-4F). For example, because many civil people come and go the Department of tax and business office, Office of Department of tax and business is on the 1st floor. Moreover visiting people would enjoy the designed corridor and landscaping at the boundary between building and road on the 1st floor. On the other hand, 4th floor, the top floor, welfare facilities for employees such as cafeteria, gym will be located. Being separated from working space, the using rate of welfare facilities is expected to increase.

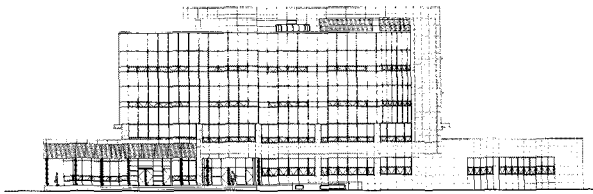
The elevation of building, of which finishing materials are granite and glass curtain wall, makes impression of building favorable and well-ordered. Besides the horizontal louver of corridor sector and canopy give changes to surface of building. As it remain refined and sophisticated even though 5 years have passed since its completion, we hope that this Yeongi branch office looks nice and attractive, even after 5 or 10 years just as it is now. ■



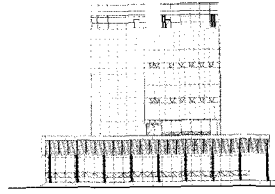
전경

- |         |           |           |           |            |          |
|---------|-----------|-----------|-----------|------------|----------|
| 01_ P/T | 04_ 로비    | 07_ 배전운영실 | 10_ 총무과   | 13_ 통신기실   | 16_ 자료실  |
| 02_ 기계실 | 05_ 창구로비  | 08_ 창고    | 11_ 회의실   | 14_ 옥외휴게공간 | 17_ 검침원실 |
| 03_ 전기실 | 06_ 영업요공파 | 09_ 아간대기실 | 12_ 사업소장실 | 15_ 배전부    |          |

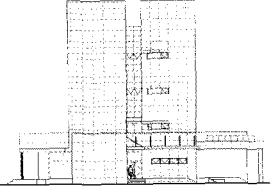




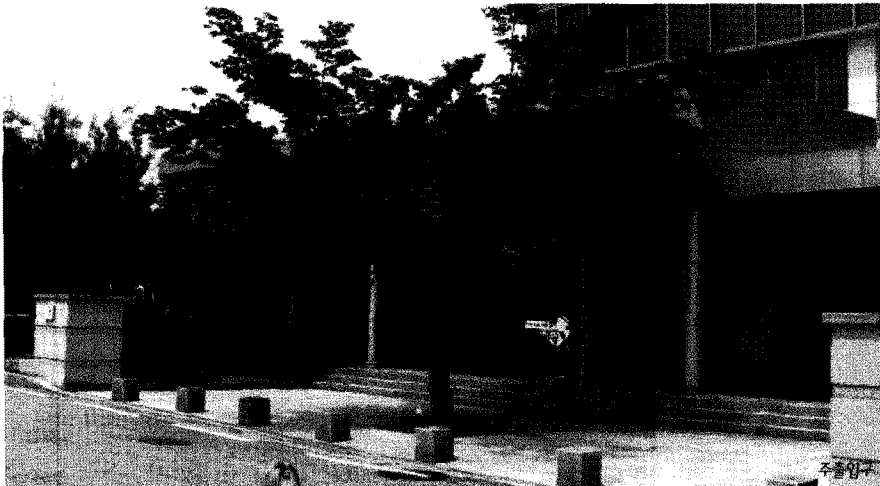
정면도



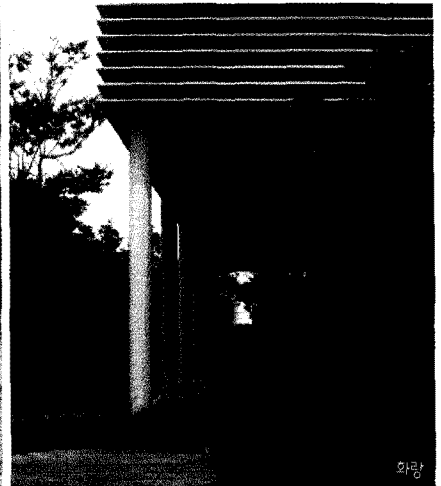
좌측면도



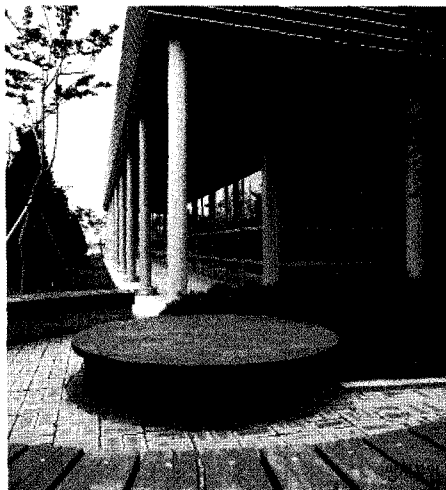
우측면도



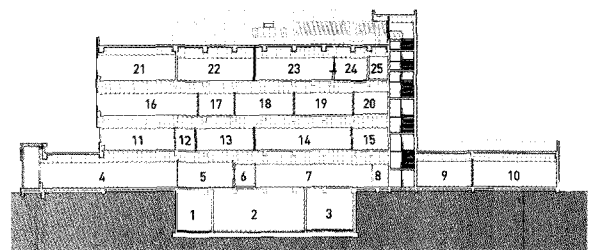
주출입구



외랑



- |           |              |            |           |
|-----------|--------------|------------|-----------|
| 01_ 물탱크실  | 08_ 배전자동화기기실 | 15_ 용도용칭고  | 22_ 체력단련실 |
| 02_ 보일러실  | 09_ 환선공구장고   | 16_ 배전부    | 23_ 식당/배정 |
| 03_ 변전실   | 10_ 계기랑고     | 17_ 도면관리실  | 24_ 주방    |
| 04_ 영업요금과 | 11_ 사업소장실    | 18_ 노조사무실  | 25_ 휴게실   |
| 05_ 로비    | 12_ 부속실      | 19_ 자료실    |           |
| 06_ 당직실   | 13_ 회의실      | 20_ 여직원경의실 |           |
| 07_ 배전운영실 | 14_ 총무과      | 21_ 강당     |           |



단면도