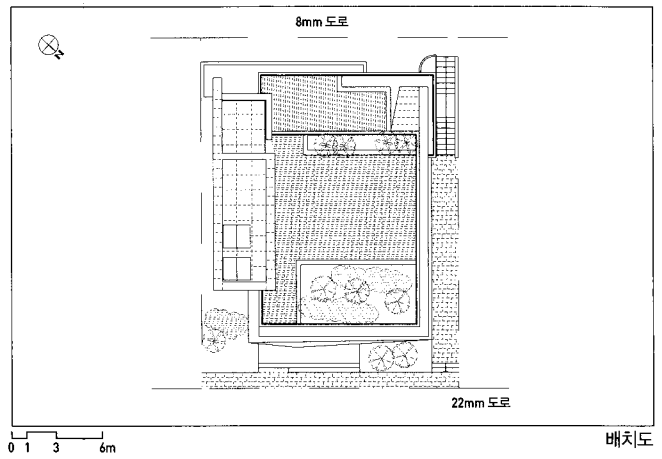
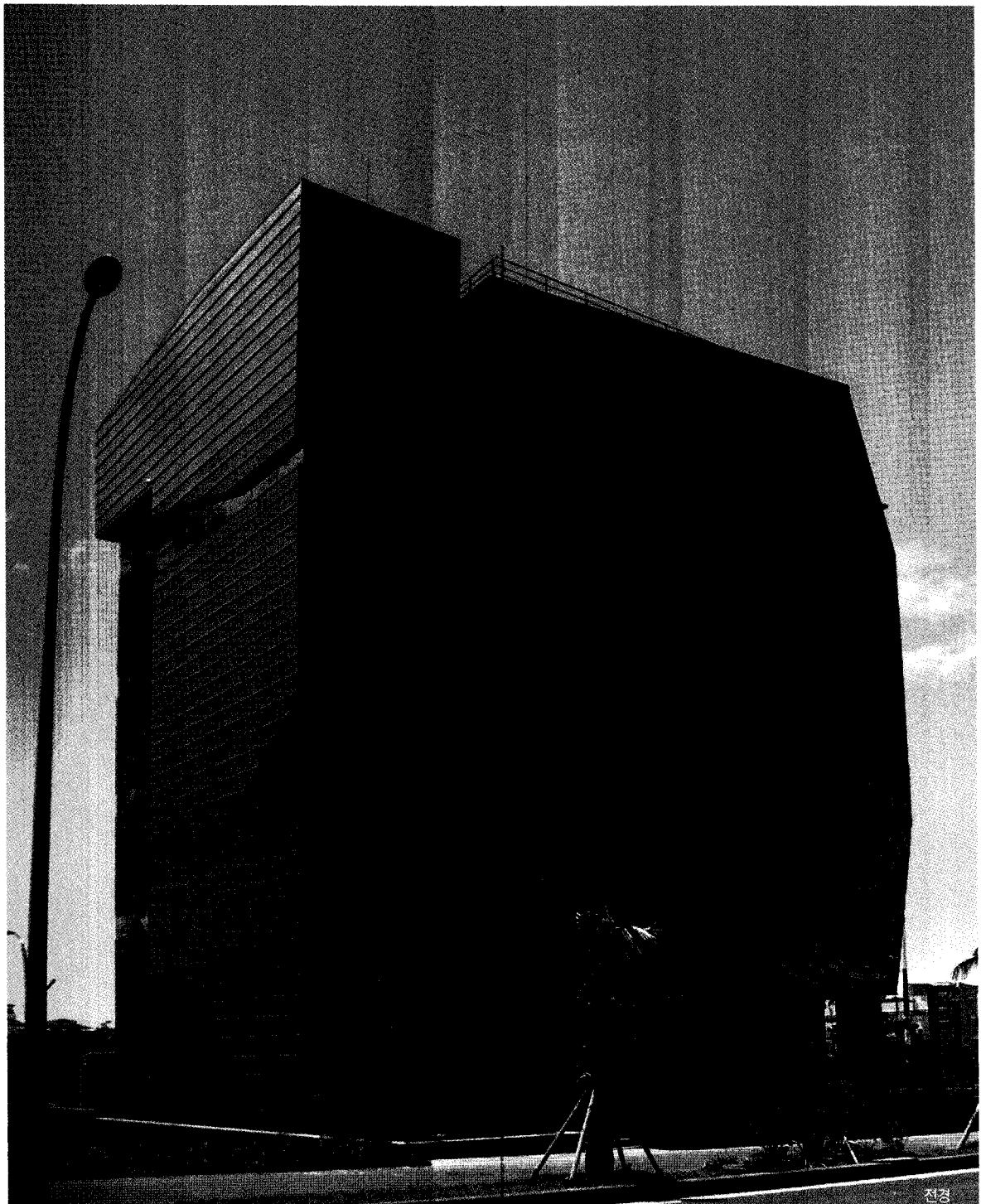


M 5
엠
파이
피

Project Team | Kang, Jung-yeol / Ko, Gyeong-m
 Client | Kang, Chun-ran
 Location | jeju-do jeju-si Ara2-dong 3012-5
 Site Area | 392.90m² Building Area | 235.055m²
 Gross Floor Area | 1,152.32m² Floor Area Ratio | 248.39%
 Building to Land Ratio | 59.80% Structure | R.C
 Building Scope | B1-5F
 HVAC Engineer | not disclosd
 Electrical Engineer | not disclosd
 Structure Engineer | not disclosd
 Finishing Materials | exposde concrete,zinc,macheon-ston
 Photographer | not disclosd
 Cost | not disclosed



선은수 | 정회원(주) 종합건축사사무소 선건축
 Architects — Sun, Eun-soo, KIRA

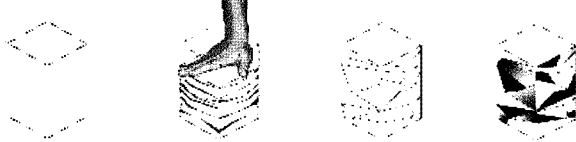


pologue_급변하는 현대화 속에서 도시를 상징하는 거대한 도로망과 기능별로 분리된 블록들, 고밀도로 지어진 주거단지는 짧은 기간동안 괄목할만한 성과를 이룩하였으나 편리와 기능위주만으로 짜여진 현재의 모습은 표정이 없는 도시. 무개성화 도시로 남게 되었다.

현 건물이 위치한 이도2지구단위계획구역도 도시개발사업에 의한 합리적인 토지이용을 목적으로 규제와 지침을 설정하여 많은 건축물이 획일화된 모습들로 채워지고 있는 지금의 상황은 건축물이 구축되는 과정에서 새로운 접근이 선행되어야 할 필요성을 느끼게 한다.

Re_organize_제시된 프로그램과 규제의 틀에서 형성된 정형화된 볼륨은 새로운 힘에 의해 재조직 되면서 다양한 방향의 facade가 파생된다.

Iconic_빛과 시간의 변화에 반응하며 사시각각 변화하는 이미지는 도시의 새로운 풍경을 만들어내고 이를 공유함으로써 소통의 매개인 icon의 성격을 부여한다.



Open space_전면부에 형성된 Open Space는 자유로운 선택적 공간으로 Public Space의 확장과 후면부로의 연속된 흐름을 유도하여 도시민들에 다양한 Activity를 제안한다.

With rapid modernisation giant network of roads, separate blocks by function and high-density residential district, which symbolise the city, achieved significant efficiency. It got formed but with function and features of position present time became the nothing individual one city.

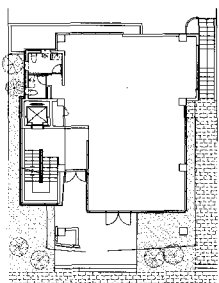
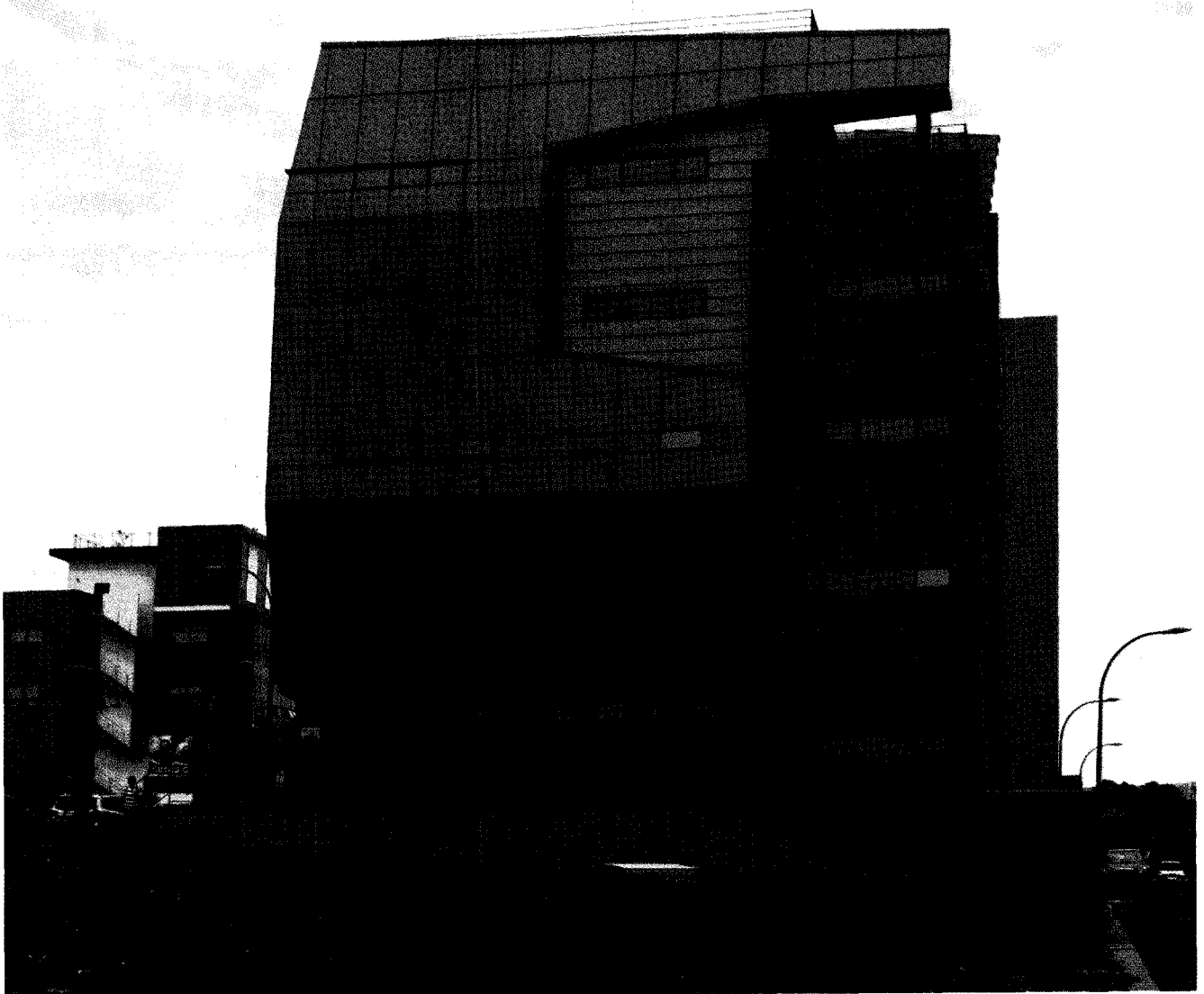
'Ido 2-Dong' District Unit Plan Area , the site of our project, is effected by a lot of regulations and rules which were established for reasonable land use. However the area ,ironically, is filled with uniform structures because of the legal limit. So we feel it is necessary to try some new design attempt in the process of construction of the structure.

Re_organize
Formulaic volume, which is formed by proposed program and regulation is reorganised by new energy, and makes multidirectional facade.

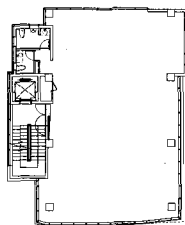
Iconic
Not only do the image which reacts to changes in light and time make new landscape in the city, it shares the landscape. Therefore it shows the nature as a vehicle for communication.

Open space
The open space in the front is a highly selective space. it provides various activities for towners with extension of the public space, as well as leading continuous flow to the rear. ■

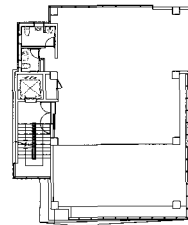




1층 평면도

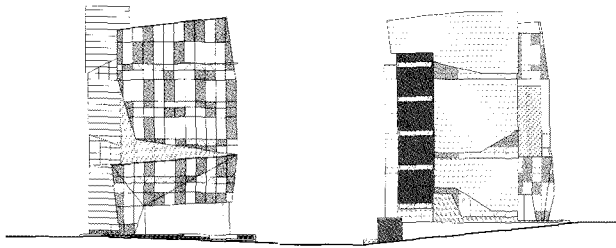


2층 평면도



3층 평면도

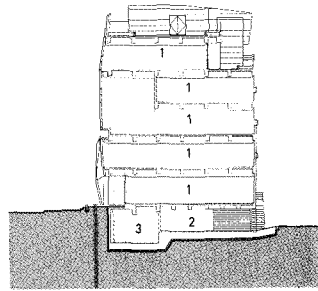
- 01. 근린생활시설 04. 계단실
- 02. 주차장
- 03. 물탱크실



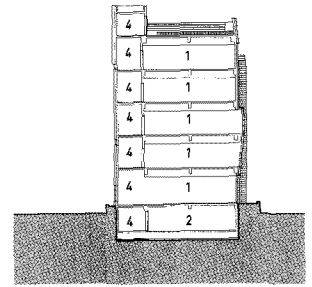
0 1 3 6m

정면도

좌측면도



종단면도



횡단면도

