

# 인천대학교 송도 신캠퍼스

Songdo New Campus Universtiy of Inchoen

이필훈 / 정희원, (주)정림건축 종합건축사사무소


인천대학교의 송도 신캠퍼스 건립에는 두 가지 큰 의미가 있다. 하나는 인천대학교의 국립대학전환의 계기로 새로운 도약을 하는 것이고, 또 하나는 대학의 연구 환경의 변화에 따른 새로운 캠퍼스의 미래지향적 비전 제시이다.

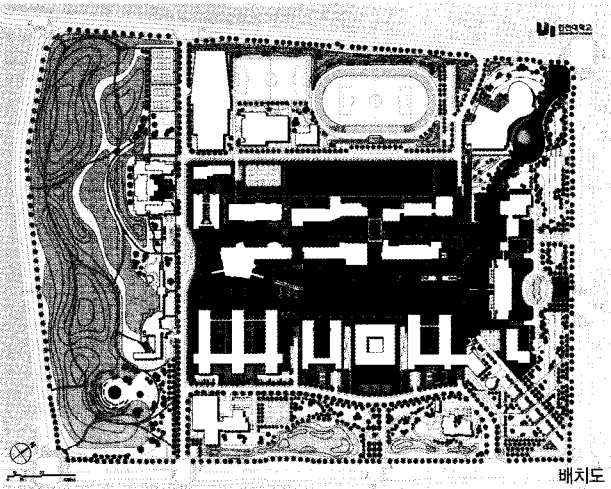
교육기관 특히 대학의 연구활동 패턴은 많은 변화를 하고 있다. 각 연구분야의 독립된 공간에서의 연구활동을 하는 형태에서 서로 다른 분야의 융합연구를 통하여 새로운 신학문과 신기술을 창조하고 있다. 따라서 송도 신캠퍼스는 이러한 요구에 의한 캠퍼스 배치계획과 공간계획에 집중하였다.

캠퍼스는 중앙에 위치한 만남의 광장 및 프롬나드를 통하여 상호교류의 장소로 이용 가능하게 하였고 연구실, 실험실, 강의실은 공용공간을 통하여 각 과별, 각 단과대학 간의 벽을 허물고 상호교류 할 수 있도록 계획하였다. 이는 앞으로 제시하는 다양한 분야의 연구 활동을 유연성 있게 대응할 수 있는 미래지향적 캠퍼스라 할 수 있다.

The construction of the new campus of Incheon University at Songdo establishes two great values. One is that Incheon University is facing a new era through its status change to a national university, and the other is that it suggests a new vision for a new campus through the change in the university's research environment.

Educational institutions, especially universities are now confronting many changes in research patterns. Researchers in the former independent space of each research area are now conducting integrated researches of different academic areas, developing to new studies and technologies. And therefore, suiting these needs of changes was focused in the zoning and space planning of the new Songdo campus.

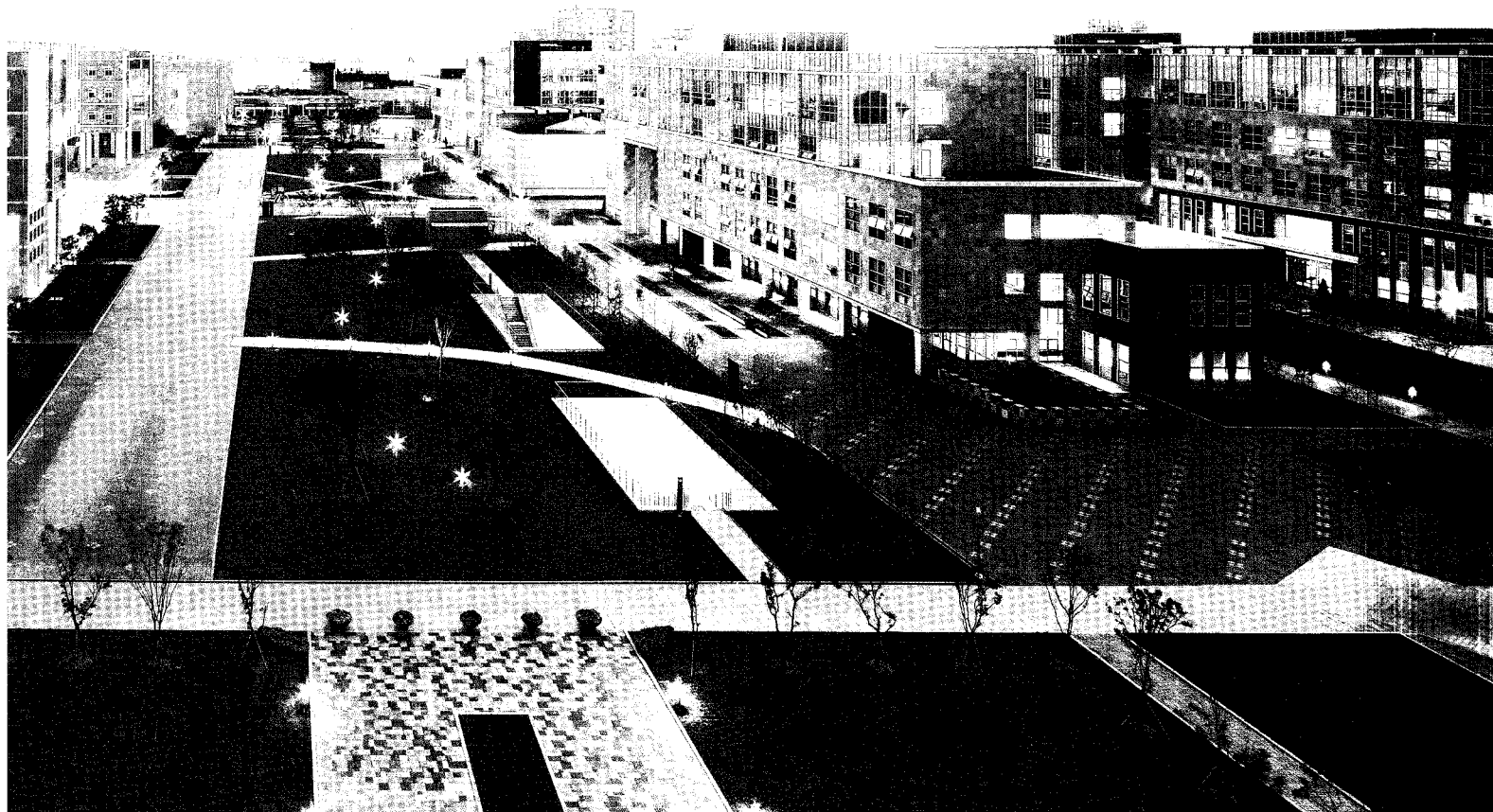
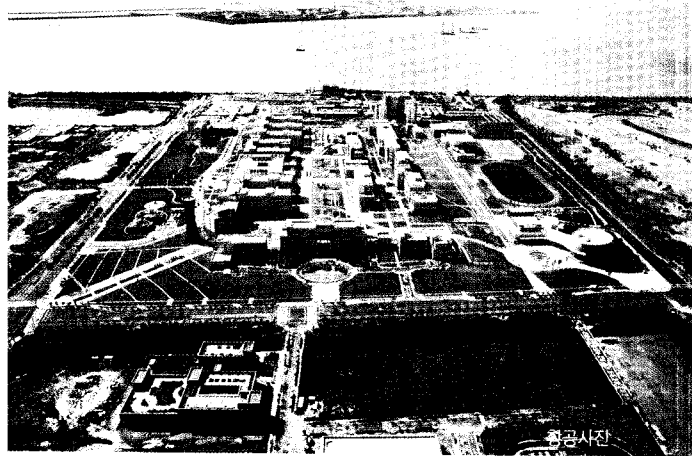
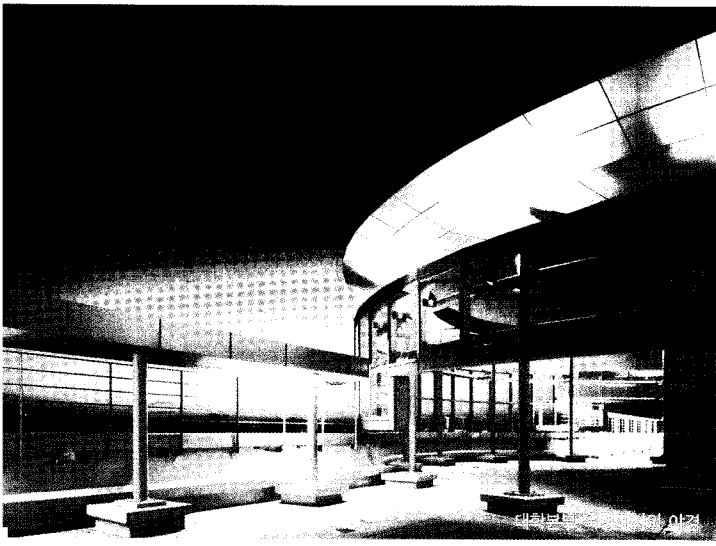
The campus is planned to serve as a communal place through the Meeting Plaza and the promenade at the center. Also student exchange activities are encouraged through the communal spaces near laboratories and lecture rooms, removing barriers between different departments. The new Songdo campus of Incheon University is a progressive campus corresponding flexibly to the diverse research activities. 

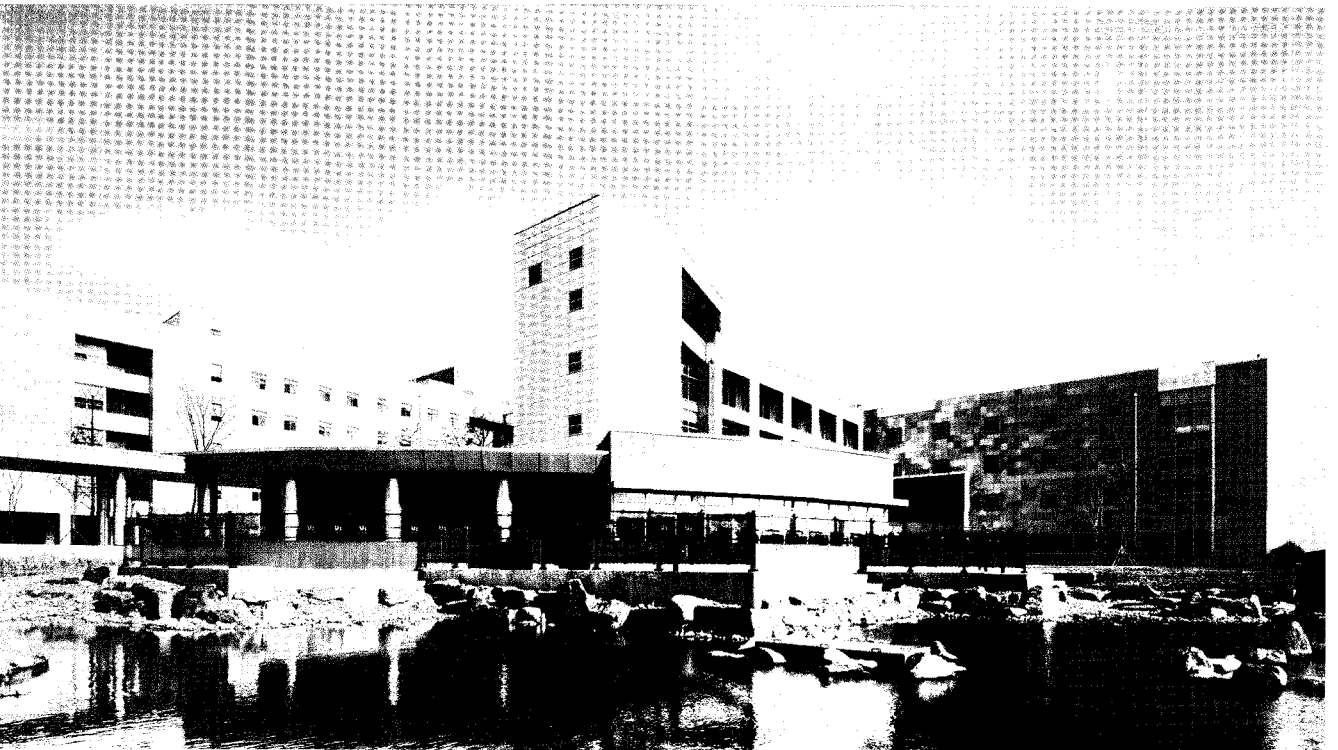
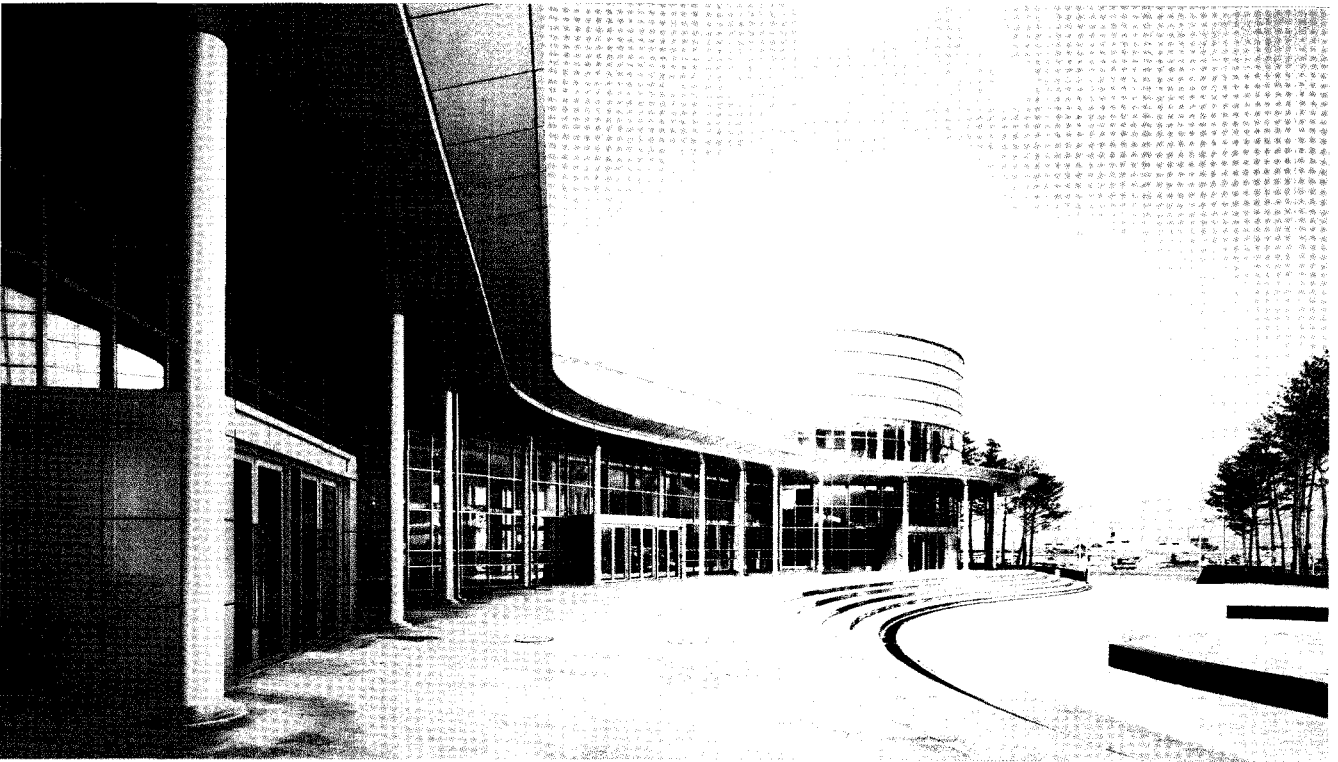


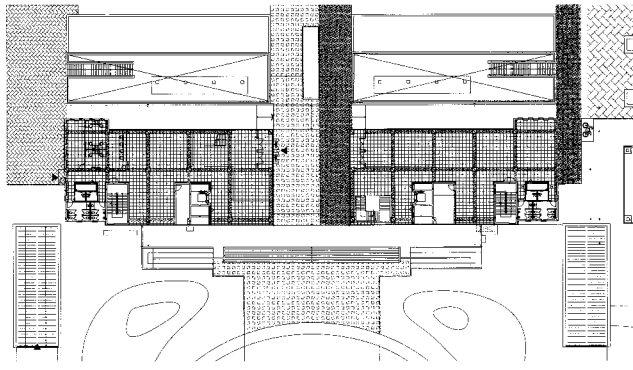
Architects Lee, Pil-hoon, KIRA  
 Project Team Kyung, Min-ho · Chae, Sung-kyu · Kim, Jong-ho · Lee, Won-ho · Lee, Myung-jin · Yun, Hee-jun · Kim, Jin-goog · Choi, Ha-ean · Chang, Seung-ju  
 Client Incheon Univ.  
 Location Incheon-si Yeonsu-gu Songdo-dong 12-1  
 Site Area 458,504.80m<sup>2</sup> Building Area 57,944.57m<sup>2</sup>  
 Gross Floor Area 216,087.86m<sup>2</sup> Building to Land Ratio 12.64%  
 Floor Area Ratio 35.54% Structure R.C, S.C  
 Structural Engineer 1<sup>st</sup> structure solution HVAC Engineer Jungdo Engineering  
 Electrical Engineer NARA Technology corps + JUNG WOO  
 General Contractor SK Engineering & Construction  
 Building Scope 5stories above ground and 1 under ground level(Dormitory : 13 stories above ground). 28wings.  
 Finishing Materials Sandstone, granitestone, pair-glass  
 Photographs not disclosed Cost 450 bn KRW



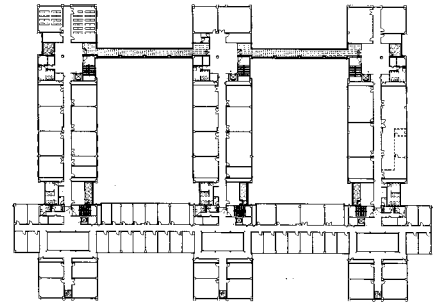
2010 Korean Architecture Works



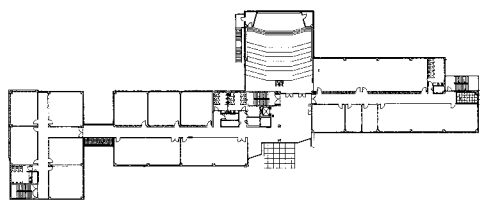




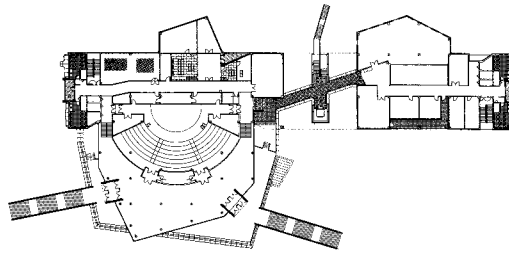
대학본부 1층 평면도



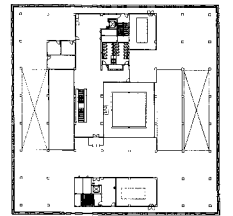
공과대학 2층 평면도



인문대학 2층 평면도



복지회관 2층 평면도



도서관 3층 평면도



복지회관

