

***Usechus chujoi* New to Korea (Coleoptera: Zopheridae: Zopherinae)**

Yoon-Ho Kim and Kee-Jeong Ahn*

Department of Biology, Chungnam National University, Daejeon 305-764, Korea

ABSTRACT

The genus and species-*Usechus chujoi* Kulzer-is identified for the first time in Korea. A habitus photo, description, and illustrations of the diagnostic characters of the species are provided.

Key words: Coleoptera, Zopheridae, Zopherinae, *Usechus chujoi*, Korea

INTRODUCTION

The genus *Usechus* Motschulsky contains six species, two of which are distributed in North America. The other four species occur in Japan (Kulzer, 1960; Kamiya, 1963; Sasaji, 1987; Saitô, 1999). Two zopherid species have been recorded to date in Korea.

Members of *Usechus* are characterized by the combination of the following characters: body oblong-oval, weakly convex on dorsal aspect; head small, usually retracted in pronotum; antennae with 11 antennomeres, terminal three antennomeres clubbed; lateral margin of pronotum strongly angulate at middle where the antennal grooves end; elytra oval, more convex than pronotum, surface with some punctate striae.

In this paper, we report the genus and species-*U. chujoi* Kulzer-for the first time in Korea. We provide description, a habitus photo and line drawings of diagnostic characters of the species. The specimens studied are deposited in the Chungnam National University Insect Collection (CNUIC, Daejeon), Korea.



Fig. 1. *Usechus chujoi*, 2.4 mm.

RESULTS

¹*Genus *Usechus* Motschulsky
Usechus Motschulsky, 1845: 79; Smetana, 2008.

²**Usechus chujoi* Kulzer (Figs. 1, 2)
Usechus chujoi Kulzer, 1960: 304; Kamiya, 1963: 24; Saitô, 1999: 104; Smetana, 2008: 79.

*To whom correspondence should be addressed
Tel: 82-42-821-5492, Fax: 82-42-822-9690
E-mail: kjahn@cnu.ac.kr

Material examined. KOREA: Chungbuk Prov., Yeongdong-gun, Yangang-myeon, Sanmak-ri, 12 IV 2007, KJ Ahn, TK Kim, YH Kim, ex fungus on logs (6♂ ♀, CNUIC); Jeonnam Prov., Kwangyang-si, Okryong-myeon, Mt. Baekwoonsan, 21 III 2009, SS Kim, ex under bark (2♂ ♀, CNUIC).

Description. Length about 2.1-2.5 mm. Body oblong-oval, convex on dorsal aspect; brown to blackish brown; surface covered with sparse short hairs; antennae and legs reddish brown; body widest at middle of elytra. Head about 1.2 times longer than wide, pronotum about 1.3 times wider than long, elytra about 2.5 times longer than wide; head small, basal

¹* 꼬마혹거저리속 (신칭), ²* 꼬마혹거저리 (신칭)

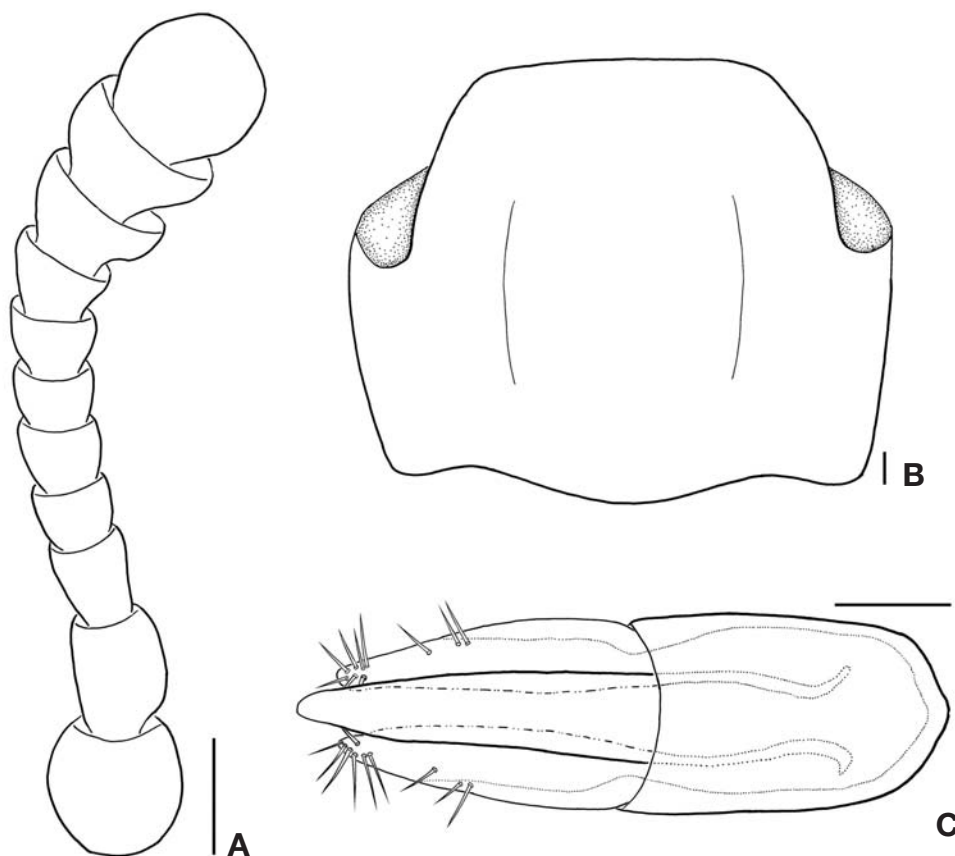


Fig. 2. *Usechus chujoi*. A, antenna, dorsal aspect; B, pronotum, dorsal aspect; C, male genitalia, dorsal aspect. Scale bars=0.1 mm.

margin of head covered with pronotum. Eyes large, flat, slightly divided by antennal insertion. Antenna stout, antennomere 2 about 1.2 times longer than wide, 3 about 1.1 times longer than wide, 4-5 about 1.3 times wider than long, 6-7 about 1.4 times wider than long, 8 about 1.7 times wider than long, 9-10 about 1.9 times longer than wide (Fig. 2A); antennomeres 9-11 distinctly clubbed (Fig. 2A). Pronotum hexangular, widest at middle (Fig. 2B); anterior margin of pronotum slightly round, lateral margin strongly angulate at middle where the antennal furrows end (Fig. 2B); medial margin of pronotum convex, with a narrow and weak depression along the median line (Fig. 2B). Elytra widest before middle, more convex than pronotum. Antero-lateral angles of elytra strongly depressed, apex roundly produced. Elytral surface very roughly sculptured and tuberculate; each elytron with ten punctate striae. Male genitalia as in Fig. 2C.

Remarks. *Usechus chujoi* is similar to *U. ohdaiensis* but can be distinguished by the distinct tubercles on elytra (tubercle absent on elytra in *U. ohdaiensis*), basal margin of pronotum as wide as length of pronotum, and lateral sides of pronotum posteriorly narrow (basal margin of pronotum distinctly wi-

der than length of pronotum and lateral sides of pronotum nearly parallel in *U. ohdaiensis*).

Distribution. Korea and Japan.

ACKNOWLEDGEMENTS

We thank Mr. Kim Sang-Soo for providing specimens. This research was supported by a grant (NIBR 052-081-072) from the Ministry of Environment of the Korean Government.

REFERENCES

- Kamiya, H., 1963. On the systematic position of the genus *Usechus* Motschulsky, with a description of a new species from Japan (Coleoptera). *Mushi*, 37: 19-26.
- Kulzer, H., 1960. Einige neue Tenebrioniden (Col.) (20. Beitrag zur Kenntnis der Tenebrioniden). *Entomologische Arbeiten aus dem Museum G. Frey*, 11: 304-317.
- Motschulsky, V. de., 1845. *Remarques sur la collection de col-*

- éoptères russes de Victor de Motschulsky. Bulletin de la Société Impériale des Naturalistes de Moscou, 18(1): 3-127, pls. 1-3.
- Saitô, M., 1999. Notes on the Japanese species of the genus *Usechus* (Coleoptera, Zopheridae). Elytra, 27: 103-111.
- Sasaji, H., 1987. Contribution to the taxonomy of the superfamily Cucujoidea (Coleoptera) of Japan and her adjacent districts, III. Memoirs of the Faculty of Education, Fukui University Series II (Natural Science), 37: 23-55.
- Smetana, A., 2008. Family Zopheridae: Zopherinae. In Löbl, I. and A. Smetana, eds., Catalogue of Palaearctic Coleoptera, Volume 5, Tenebrionoidea. Apollo Books. Stenstrup, Denmark, pp. 78-79.

Received May 8, 2008
Accepted May 20, 2009