

SYSTEM

F&E

P.F.M.(Porcelain Fused to Metal)

Opaque

가

allergy,

black line

P.F.M.

P.F.G.(Porcelain Fused to

Gold)가
가

, P.F.G.

가

가

가

가

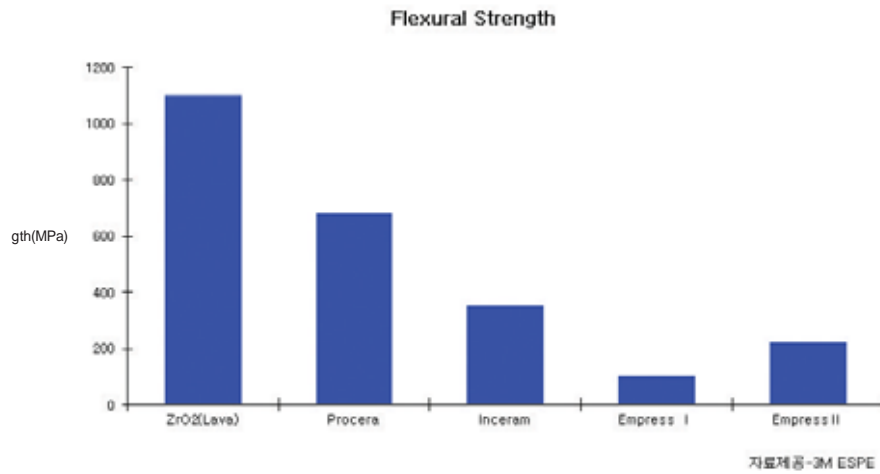
Gold값 상승



-()

1930 Land
 가 1960 Dr. McLean 가 Porcelain Jacket Crown (,
 2007).

. Ceramic 가 All Ceramic 가
 Metal Ceramic crown All Ceramic crown 가



<All Ceramic Crown >

1. (Porcelain jacket crown)
2. (Banded platinum - foil coping)
3. (Opalescent porcelain)
4. (Glass - ceramic crown)
5. (Leucite - reinforced porcelain)
6. 가 (Injection - molded glass - ceramic)
7. (Glass - infiltrated core ceramic)
8. Laminate Veneer, Onlay, Inlay
9. CAD/CAM SYSTEM

All Ceramic CAD/CAM system
 Ceramic가 CAD/CAM system ,
 가 .

<All Ceramic Crown >

1. 가 (P.F.M. ,)



- 2. 가 .
- 3. 가 . crown 가 ceramic 가 가 ,
- 4. , .
- 5. (core porcelain).
- 6. X- X- 2 , post, pin, , 가 . allergy가 가 .

<All Ceramic Crown >

- 1. crown .
- 2. 가 , , bruxism , clenching (가).

All Ceramic crown

CAD/CAM SYSTEM

CASTABLE CERAMIC SYSTEM

1. CAD/CAM SYSTEM

CAD/CAM SYSTEM

가

CAD(Computer Aided Design)

, CAM(Computer Aided Manufacturing)

가

CAD/CAM SYSTEM

Zirconia

, Zirconia(ZrO₂) Zirconium

Zirconia

가

2004

Zirconia

1) Zirconia block

(CeraSys System,) - Layering Technique



Layering Technique Full wax-up

Staining

Technique 가 , , Implant

가 . 8unite bridge 가 ,

14unite bridge 가 block .

Model, Die preparation



-

Model(pin)

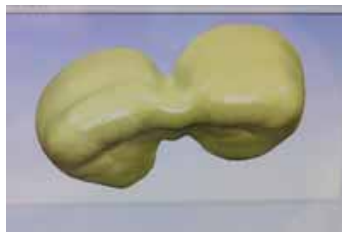
margin check

Laser Scan - Scanner



CAD/CAM -

core



Block Milling - block

가



- milling

shade

furnace

firing(1500 , 12

)



가 Zirconia block 가 Zirconia 가 -
 가 Core 가 milling bur 가
 Build-up , .

2)

- Case

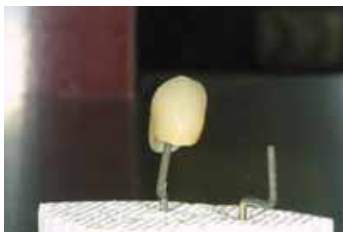
core

zirconia

powder

build-up

contouring



- Case



- Case



- Anterior Crown

- Case



- Implant

- Case



- Implant abutment

S.C.R.P.type

2. CASTABLE CERAMIC SYSTEM

Wax - up

Ingot(core) Press

Press Ceramic . Full wax - up

가 Staining Technique

press

Porcelain Powder

Build - up

Dentin Pressing

Powder

Layering Technique



Posterior Crown Layering Technique

stain

Anterior Crown

Shade

1) Press System

(IPS e.max Press System,) - Staining Technique



Full wax - up Inlay, Onlay, Crown, Laminate Veneer
가 . Wax - up Ingot Press Ingot Porcelain
Powder 가 .

Model, Die preparation



- check Model(pin) spacer margin

Contouring (Full wax - up)



Spruing, Investing



- sprue ,

Preheating, Burn-out



- furnace ring .

Pressing



- , Press Ingot Press .

Divesting, Removing the reaction layer



- Press core 가 . sprue .

Staining, Glazing



- stain shade ,





2)

- Case



- Anterior Crown

- Case



- Posterior Crown

- Case



- Anterior Crown(Layering Technique)

- Case



- Anterior Crown(Staining Technique)

- Case



- Staining Technique Veneer

Laminate Veneer

3. ZirPress SYSTEM (IPS e.max ZirPress System,)



CAD/CAM System Castable Ceramic System Zirconia core
 ZirLiner Ingot Press 가 Staining and Layering technique 가 .

(All Creamic crown)

3 , , . , 가

가
 가 ,

가

가

, 35-37, 2007.1