

골 신티그래피상 두개골에 열소로 나타난 대뇌점과 경수뇌막에 다발성석회화

전북대학교 의과대학 핵의학교실, 내과학교실¹, 의과학연구소, 임상의학연구소
손명희 · 정환정 · 임석태 · 임창열¹

Multifocal Calcifications of the Falx Cerebri and Dura Presenting as Hot Spots in the Skull on Bone Scintigraphy

Myung-Hee Sohn, M.D., Hwan-Jeong Jeong, M.D., Seok Tae Lim, M.D., and Chang-Yeol Yim, M.D.¹

Departments of Nuclear Medicine and Internal Medicine¹, Institute for Medical Sciences, and Research Institute of Clinical Medicine, Chonbuk National University Medical School, Jeonju, Korea

A 49-year-old woman with invasive ductal carcinoma of the right breast underwent Tc-99m MDP bone scintigraphy for an evaluation of skeletal metastases. Multiple focal hot spots in the midline and left frontoparietal skull region were observed. The plain radiographs revealed the typical findings of the calcification of the falx cerebri and dura. These findings might be mistaken for metastases of the skull in cancer patients. Therefore, a radiographic correlation is essential when multifocal hot spots in the skull are observed in cancer patients. (Nucl Med Mol Imaging 2007;41(1):64-65)

Key Words: bone scintigraphy, Tc-99m MDP, calcification, falx cerebri, dura

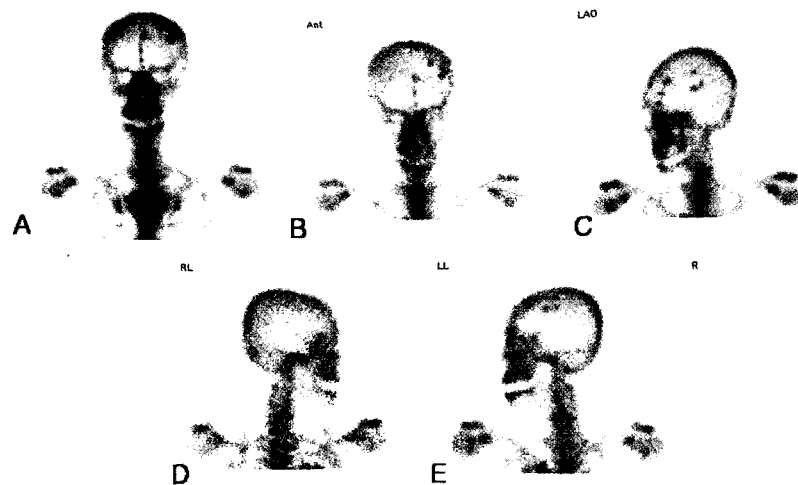


Fig 1. A 49-year-old woman with invasive ductal carcinoma of the right breast underwent Tc-99m MDP bone scintigraphy for an evaluation of skeletal metastases. (A) Anterior, (B) caudal-angled, (C) left anterior oblique, (D) right lateral, and (E) left lateral images of the skull showed multiple focal hot spots in the midline and left frontoparietal skull region, mimicking metastases.

• Received: 2007. 2. 14. • Accepted: 2007. 2. 20.

• Address for reprints: Myung-Hee Sohn, M.D., Department of Nuclear Medicine, Chonbuk National University Hospital, 634-18, Geumam-dong, Duckjin-gu, Jeonju 561-712, Korea
Tel: 82-63-250-1174, Fax: 82-63-250-1588
E-mail: mhsohn@chonbuk.ac.kr

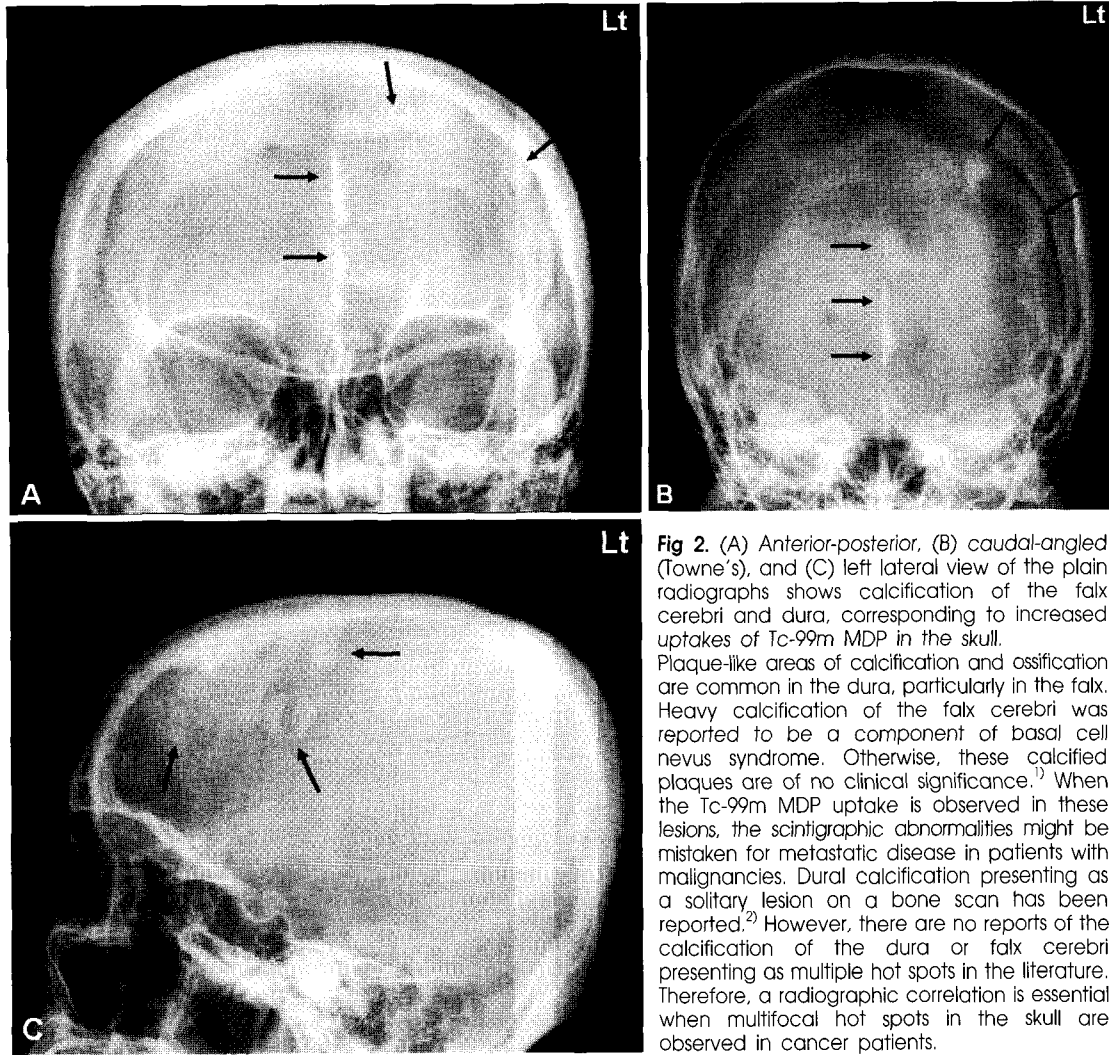


Fig 2. (A) Anterior-posterior, (B) caudal-angled (Towne's), and (C) left lateral view of the plain radiographs shows calcification of the falx cerebri and dura, corresponding to increased uptakes of Tc-99m MDP in the skull. Plaque-like areas of calcification and ossification are common in the dura, particularly in the falx. Heavy calcification of the falx cerebri was reported to be a component of basal cell nevus syndrome. Otherwise, these calcified plaques are of no clinical significance.¹⁾ When the Tc-99m MDP uptake is observed in these lesions, the scintigraphic abnormalities might be mistaken for metastatic disease in patients with malignancies. Dural calcification presenting as a solitary lesion on a bone scan has been reported.²⁾ However, there are no reports of the calcification of the dura or falx cerebri presenting as multiple hot spots in the literature. Therefore, a radiographic correlation is essential when multifocal hot spots in the skull are observed in cancer patients.

References

1. Brown WD, Strother CM, Turski PA, Gentry LR: Intracranial diseases. In: Juhl JH, Crummy AB, Kuhlman JE, editors. *Essentials of Radiologic Imaging*. 7th ed. Philadelphia: Lippincott Williams & Wilkins; 1998. p. 373-441.
2. Bobba RV, Fink-Bennett D. A dural calcification presenting as a solitary lesion on radionuclide bone scan. *Clin Nucl Med* 1978;3:35.