

조병현¹, 최혜숙¹, 조창현¹, 김이형², 최천웅², 박명재¹, 유지홍², 강홍모¹

A Case of Mycoplasma Pneumonia Presenting with RUL Collapse

Byung Hyun Cho, M.D.¹, Hye Sook Choi, M.D.¹, Chang Hyun Cho, M.D.¹, Yee Hyung Kim, M.D.², Cheon Woong Choi, M.D.², Myung Jae Park, M.D.¹, Jee-Hong Yoo, M.D.², Hong Mo Kang, M.D.¹
 Department of Pulmonary and Critical Care Medicine, Kyunghee University College of Medicine, ¹Kyunghee Medical Center, ²East and West Neo Medical Center, Seoul, Korea

Mycoplasma pneumoniae is a common pathogen of community-acquired pneumonia. Mycoplasma pneumonia causes upper and lower respiratory tract symptoms in all age groups, with the highest attack rates in subjects 5 to 20 years old. In patients with mycoplasma pneumonia, the most common radiographic findings may be reticulonodular or interstitial infiltration, which have a predilection for the lower lobes. Findings that show lung collapse on a chest X-ray are very rare. We report a case of mycoplasma pneumonia that showed right upper lobe collapse. (*Tuberc Respir Dis* 2007;63:511-514)

Key Words: Mycoplasma, Pneumonia, Collapse

서 론

증 례

Mycoplasma pneumoniae 환 자: OO, 19
 주 소: 7
 현병력: 2
 1
 5
 3
 19
 1
 과거력:
 이학적 소견: 120/80 mmHg
 , 80 / , 20 / , 36.4°C
 5~20 가
 1,2
 15~20%
 가 .
 ,
 ,
 .

Address for correspondence: Hong Mo Kang, M.D.
 Department of Pulmonary and Critical Care Medicine,
 Kyunghee University College of Medicine, Kyunghee
 Medical Center, 1, Hoegi-dong, Dongdaemun-gu, Seoul,
 Korea
 Phone: 82-2-958-8191, Fax: 82-2-968-1848
 E-mail: kmcim@chol.com
 Received: Oct. 19, 2007
 Accepted: Dec. 14, 2007

검사실 소견: 6,390/mm³ (
 61.8%), 14.3 mg/dL, 293,000/
 mm³ , aPTT 43 , PT 13

가 1 : 640

방사선학적 소견 및 경과:
(Figure 1)
clarithromycin 3

(Figure 2)

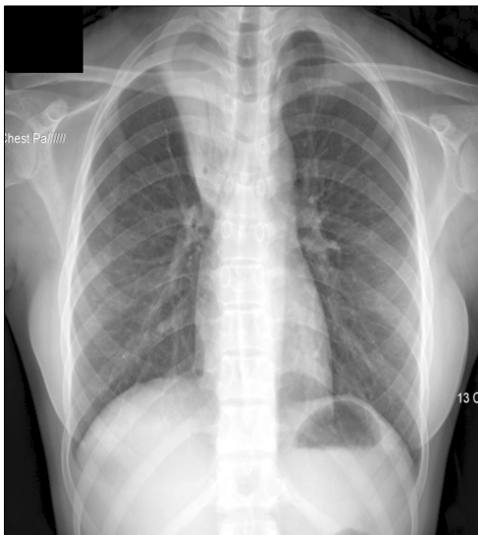


Figure 1. Chest PA shows total collapse of right upper lobe.



Figure 2. Chest CT shows total collapse of right upper lobe.

(Figure 3)

가가 *Mycoplasma pneumo-*
niae
clarithromycin 1,000 mg
5

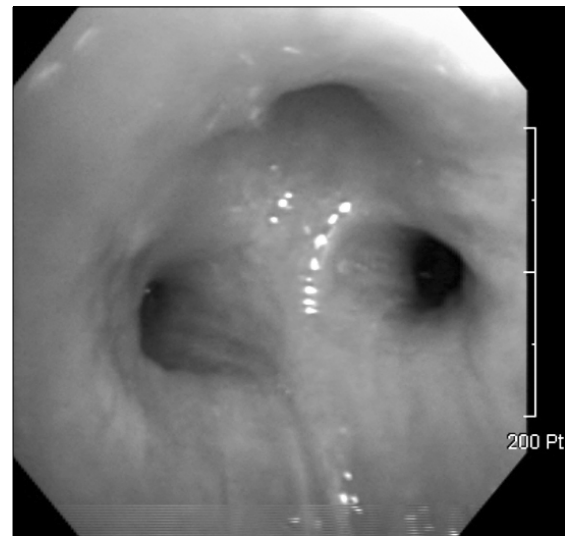


Figure 3. Bronchoscopy shows the hyperemic mucosal swelling at right upper lobe bronchus.

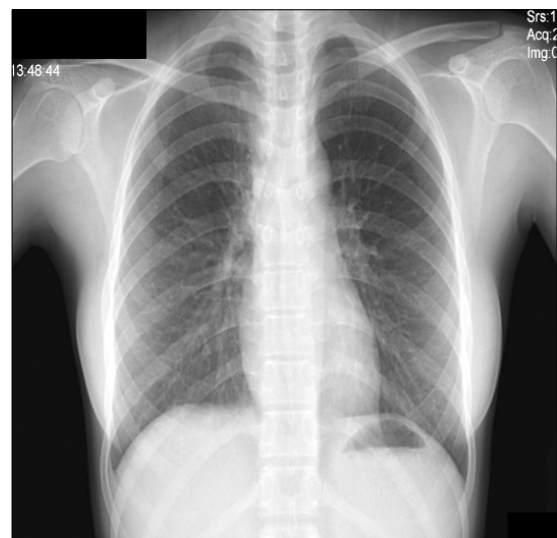


Figure 4. Right upper lobe collapse is completely improved on the 5th hospital day.

5%

참 고 문 헌

1. Bartlett JG, Mundy LM. Community-acquired pneumonia. *N Engl J Med* 1995;333:1618-24.
2. Hammerschlag MR. Mycoplasma pneumoniae infections. *Curr Opin Infect Dis* 2001;14:181-6.
3. Clyde WA Jr. Clinical overview of typical Mycoplasma pneumoniae infections. *Clin Infect Dis* 1993;17:S32-6.
4. Niitu YM. Pneumoniae respiratory diseases: clinical features--children. *Yale J Biol Med* 1983;56:493-503.
5. Murray JF, Nadel JA. Chap 34. Pyogenic bacterial pneumonia, lung abscess and empyema. In: Caroline CJ, Sydney MF, editors. *Textbook of respiratory medicine*. 2th ed. Philadelphia: W.B. Sanders Company; 1994.p.1074-5.
6. Bruns AH, Oosterheert JJ, Prokop M, Lammers JW, Hak E, Hoepelman AI. Patterns of resolution of chest radiograph abnormalities in adults hospitalized with severe community-acquired pneumonia. *Clin Infect Dis* 2007; 45:983-91.
7. Reimann HA. Atypical pneumonia in old age. *Geriatrics* 1968;23:173-82.
8. Meiklejohn G, Beck MD, Eaton MD. Atypical pneumonia caused by Psittacosis-like viruses. *J Clin Invest* 1944;23:167-75.
9. Chanock RM, Hayflick L, Barile MF. Growth on artificial medium of an agent associated with atypical pneumonia and its identification as a PPLO. *Proc Natl Acad Sci USA* 1962;48:41-9.
10. Busolo F, Tonin E, Meloni GA. Enzyme-linked immunosorbent assay for serodiagnosis of Mycoplasma pneumoniae infections. *J Clin Microbiol* 1983;18:432-5.
11. Daxboeck F, Krause R, Wensch C. Laboratory diagnosis of Mycoplasma pneumoniae infection. *Clin Microbiol Infect* 2003;9:263-73.
12. Cunha BA. The atypical pneumonias: clinical diagnosis and importance. *Clin Microbiol Infect* 2006;12 Suppl 3:12-24.
13. Mandell LA, Wunderink RG, Anzueto A, Bartlett JG, Campbell GD, Dean NC, et al. Infectious Diseases society of America/American Thoracic Society consensus guidelines on the management of community-acquired pneumonia in adults. *Clin Infect Dis* 2007;44:S27-72.
14. Cunha BA. The antibiotic treatment of community-acquired, atypical, and nosocomial pneumonias. *Med Clin North Am* 1995;79:581-97.
15. McCormack WM. Chapter 159. Infection due to mycoplasmas. In: Kasper DL, Fauci AS, Braunwald E, Hauser SL, Longo DL, Jameson L, et al, editors. *Harrison's principles of internal medicine*. 16th ed. New York: McGraw-Hill.Inc; 2005.p.1008.