

## Two Freshwater Cryptomonads New to Korea: *Cryptomonas marssonii* and *C. pyrenoidifera*

Jee-Hwan Kim, Sung Min Boo and Woongghi Shin\*

Department of Biology, Chungnam National University, Daejeon 305-764, Korea

We described two brownish freshwater *Cryptomonas* species, *C. marssonii* Skuja and *C. pyrenoidifera* Geitler as first records in Korea. The identification was based on light microscopy, scanning electron microscopy, and nuclear SSU rDNA sequences analysis. *Cryptomonas marssonii* is characterized by its sigmoid shape with a sharply pointed and dorsally curved antapex, dorso-ventrally flattened cell, two lateral plastids without pyrenoid, and its dimension of 18-25  $\mu\text{m}$  in length and 8-13  $\mu\text{m}$  in width. *Cryptomonas pyrenoidifera* is characterized by ovoid to elliptical shape with a partially twisted or rounded antapex, dorso-ventrally biconvex cell, lateral plastids with two pyrenoids, and the dimensions of 15-22  $\mu\text{m}$  in length and 10-14  $\mu\text{m}$  in width. Nuclear SSU rDNA sequences between *C. marssonii* WCK01 from Korea and CCAC0086 from Gernmay, and between *C. pyrenoidifera* WCK02 from Korea and CCMP152 from Australia were identical, respectively.

**Key Words:** *Cryptomonas marssonii*, *C. pyrenoidifera*, Cryptophyceae, morphology, nuclear SSU rDNA sequences

### INTRODUCTION

Cryptomonads (Class Cryptophyceae) are biflagellate, unicellular organisms with approximately two hundred species in many kinds of aquatic habitats (Cerino and Zingone 2006). They make nuisance blooms both in marine and freshwater ecosystems (Nishijima 1990; Novarino 2003). They are easy to recognize due to their peculiar behavior of swaying swimming and unique plastid complex derived from endosymbiosis with a red alga (Douglas and Penny 1999). Cryptomonads contain only phycoerythrin of the red algal phycobilisomes and a highly reduced endosymbiont nucleus known as nucleomorph. The presence of a secondary nucleus and the distinctive pigment reflects the complex evolutionary history of cryptomonads (Douglas *et al.* 2001; Archibald 2007).

*Cryptomonas* (Ehrenberg 1831) is a unicellular freshwater genus that often forms mucilaginous palmelloid colonies. The genus is characterized by having the furrow-gullet complex, two chloroplasts and purple phycoerythrin 566 as an accessory pigment (Butcher 1967; Clay *et al.* 1999; Hoef-Emden and Melkonian 2003). In addition, *Cryptomonas* exhibits two different cell types within a clonal culture: one cryptomorph type possesses an inner

periplast component (IPC) consisting of polygonal to oval-shaped plates, and the other campyloform type possesses a sheet-like inner periplast component (Hill 1991; Hoef-Emden and Melkonian 2003; Hoef-Emden 2007). Classification system of the genus was based mainly on morphological criteria such as cell size, cell shape, furrow/gullet system, periplast structure, and internal anatomy (Novarino and Lucas 1993; Clay *et al.* 1999; Deane *et al.* 2002). However, it is difficult to identify cryptomonad species because of their small size, brittleness, and less maintenance of type materials. Recently, DNA sequence data have been used to test hypotheses on cryptomonad diversity (Novarino and Lucas 1993; Clay *et al.* 1999) and to describe five species of the genus (Hoef-Emden 2007).

To date, two species of freshwater *Cryptomonas* has been recorded in Korea by floristic study (Chang 1981). However, morphology and relative importance of the genus in Korea are scarcely known. We reported two brownish freshwater cryptomonads, *Cryptomonas marssonii* and *C. pyrenoidifera* as a first record in Korea. They were examined by light microscopy, scanning electron microscopy, and nuclear small subunit ribosomal DNA (SSU rDNA) sequences.

---

\*Corresponding author (shinw@cnu.ac.kr)

## MATERIALS AND METHODS

### Algal cultures and microscopy

Specimens were collected from various freshwater habitats in Korea during October 2006 to March 2007. Live cells were isolated by micropipette technique and the isolates were grown in *f/2* medium (Guillard 1975). The clonal cultures were maintained at  $22 \pm 1^\circ\text{C}$  on a 14:10h LD photoperiod using cool-white fluorescence lamps with illuminations of  $30\text{-}\mu\text{mol m}^{-2}\text{ sec}^{-1}$ . The morphology was examined with a light microscope (Nikon Eclipse 80i, Nikon) and scanning electron microscope (JSM-7000F, Jeol). For SEM, cells were fixed in 2.5% glutaraldehyde in culture medium for 1 h, collected on 2.5  $\mu\text{m}$  pore size filters, and rinsed in distilled water. Then, the cells were post fixed in 1% osmium tetroxide for 1 h, dehydrated through an alcohol series (50%, 60%, 70%, 80%, 90%, and 100% ethanol), and critical point dried. Dried cells were mounted on stubs, coated with gold and observed under a SEM (Cerino and Zingone 2006). Species identification was confirmed based on nuclear SSU rDNA sequence.

### Analyses of nuclear SSU rDNA sequence

Live cells were harvested by centrifugation and total genomic DNA was extracted using the DNeasy Tissue Kit (Qiagen GmbH, Hilden, Germany), according to the manufacturers' protocol. Nuclear SSU rDNA region was amplified using CrN1F and modified BR primers and sequenced using CrN1F, 826F, 956R, and modified BR primers of Hoef-Emden *et al.* (2002). PCR was carried out under the following conditions: initial denaturation at  $95^\circ\text{C}$  for 4 min, followed by 30 cycles of denaturing at  $95^\circ\text{C}$  for 1 min, annealing at  $47^\circ\text{C}$  for 1 min, and elongation at  $72^\circ\text{C}$  for 2 min, followed by a final extension at  $72^\circ\text{C}$  for 6 min. PCR products were purified using the QIAquick PCR Purification Kit (Qiagen GmbH, Hilden, Germany), according to the manufacturer's protocols. The bi-directional sequences were determined for all specimens using an ABI PRISM<sup>TM</sup> 3730 xl DNA Sequencer (Perkin-Elmer Applied Biosystems, Foster City, CA, USA). GenBank accession numbers for nuclear SSU rDNA analyzed in this study are EU163586 for *Cryptomonas marssonii* and EU163587 for *C. pyrenoidifera*.

The alignment of 19 nuclear SSU rDNA sequences, two new sequences determined here and 17 previous known sequences from GenBank, were refined by eye in the Genetic Data Environment (GDE 2.2) program (Smith *et*

*al.* 1994). The entire conserved areas of the SSU rDNA genes were readily alignable across taxa, and were used for phylogenetic analyses.

Phylogenetic trees were constructed using maximum parsimony (MP), maximum likelihood (ML), and Bayesian analyses. MP analysis was conducted with PAUP\* (Swofford 2002) using a heuristic search algorithm with the following settings: 100 random sequence-addition replicates, tree bisection-reconnection (TBR) branch swapping, MulTrees, all characters unordered and unweighted, and branches with a maximum length of zero collapsed to yield polytomies. The bootstrap values (BS) for the resulting nodes were assessed using bootstrapping with 1000 replicates (Swofford 2002).

For ML and Bayesian analyses, evolutionary best-fit model (TrN+I+G) was selected by ModelTest 3.7 (Posada and Crandall 1998) under the Hierarchical Likelihood Ratio Tests (hLRTs) and Akaike Information Criterion (AIC). ML analysis was performed with PAUP\* (Swofford 2002) by heuristic search with 100 random sequence-addition replicates, TBR branch swapping, and MulTrees options. Bootstrapping (BP) analysis was performed with 1,000 replicates.

Bayesian analysis was performed with MrBayes 3.2 (Huelsenbeck and Ronquist 2001). Each analysis was initiated from a random starting tree, and the program was set to run four chains of Markov chain Monte Carlo iterations simultaneously for 2,000,000 generations. Tree and parameters were sampled every 100 generations and the first 800 trees were burned to ensure that they had stabilized. A majority rule consensus tree was calculated from the remaining trees to examine the posterior probabilities of each clade.

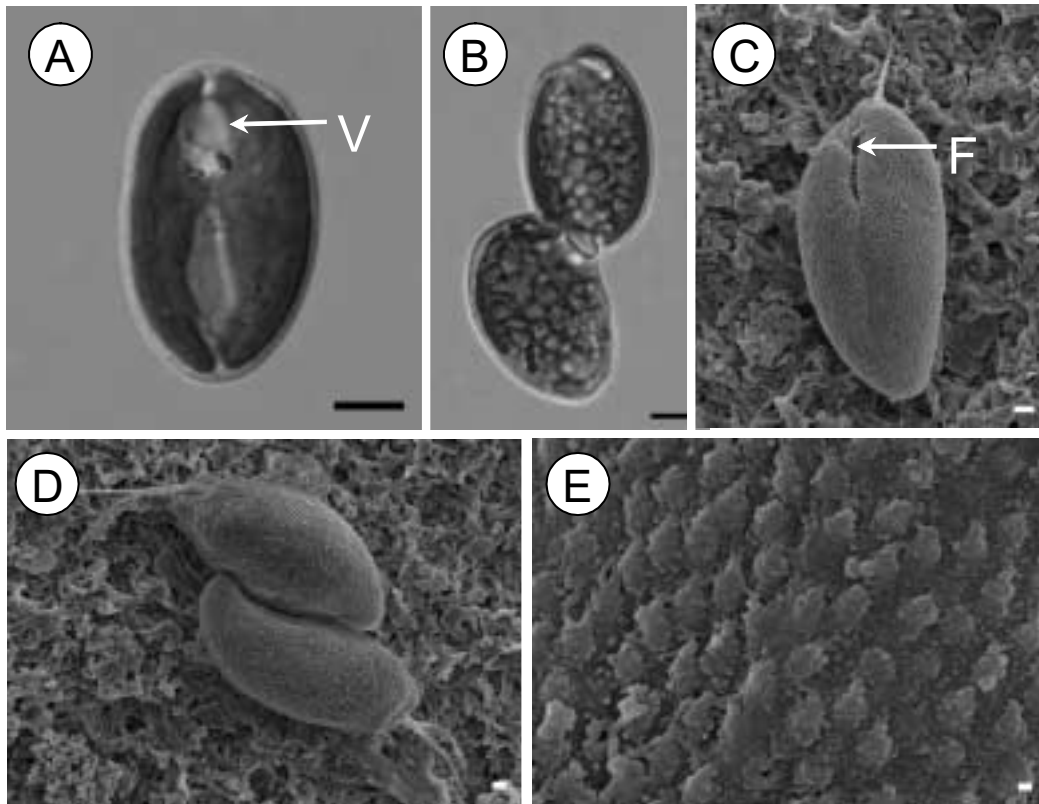
## RESULTS AND DISCUSSION

### *Cryptomonas marssonii* Skuja 1948

**Specimens examined:** Ojeong pond, Naju, Korea (Nov. 04, 2006; WCK01); Daepyeong swamp, Haman, Korea (Mar. 02, 2007); Gahang swamp, Haman, Korea (Mar. 02, 2007); Jillal swamp, Haman Korea (Mar. 02, 2007).

**Light microscopy:** Cells are 18-25  $\mu\text{m}$  in length and 8-13  $\mu\text{m}$  in width, and are ovoid to asymmetrical in ventral or dorsal view. The cells have two lateral plastids without a pyrenoid and contain a contractile vacuole seen in ventral view (Fig. 1A). In dorsal view, the anterior end of the cell is a slightly protuberant shape (Fig. 1B).

**Electron microscopy:** Two subequal flagella emerge



**Fig. 1.** Micrographs of *Cryptomonas marssonii* Skuja. A and B. Light micrographs: A, Ventral view; B, Dorsal view. C, D and E. Scanning electron micrographs: C, Ventral view showing a furrow and flagella inserted at its top right-hand side; D, Dorso-lateral view; E, Details of the periplast. Abbreviations: F, furrow; V, contactile vacuoloe. Scale bars: A and B, 10  $\mu$ m; C and D, 1  $\mu$ m; E, 100 nm.

from the right-hand side of the vestibulum and a narrow furrow runs posteriorly on the ventral surface for about one-third of the cell length (Fig. 1C). Cells are sigmoid-shaped with the sharply pointed and curved antapex in lateral view (Fig. 1D), and the periplast has an inner sheet with small protuberance, lacking discrete periplast areas (Fig. 1E).

**Synonyms:** *Cryptomonas hamosa* Schiller [1957, Untersuchungen an den planktischen Protophyten des Neusiedlersees 1950-1954, II. Teil, Eisenstadt, p. 32, pl. X, fig. 45]; *Cryptomonas perimpleta* Schiller [1957, Untersuchungen an den planktischen Protophyten des Neusiedlersees 1950-1954, II. Teil, Eisenstadt, p. 31, pl. IX, fig. 42]; *Cryptomonas perimpleta* var. *cordiformis* Schiller [1957, Untersuchungen an den planktischen Protophyten des Neusiedlersees 1950-1954, II. Teil, Eisenstadt, p. 31-32, pl. X, fig. 43].

**Remarks:** Based on the campylomorph cell shape and size, this species was first described by Skuja (1948). In the previous works, cells in a single culture of *C. marssonii* were depicted for *Cryptomonas hamosa*, *C. perimpleta*, and *C. perimpleta* var. *cordiformis*, which are treated

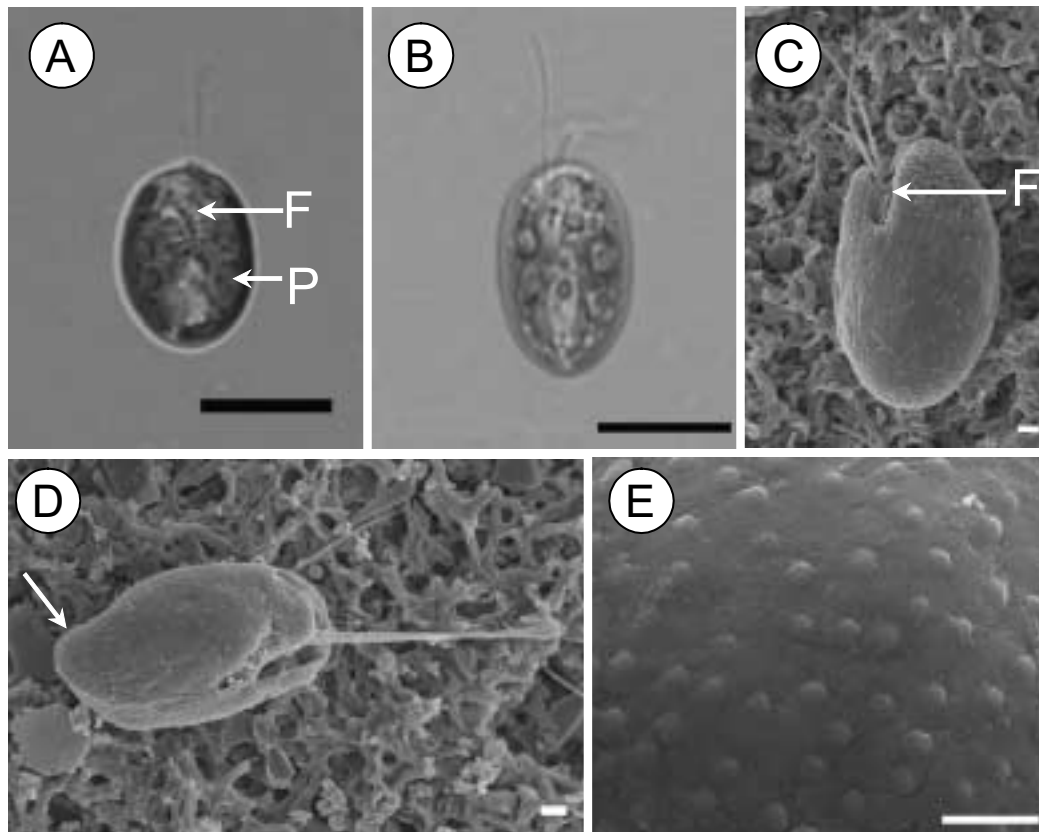
as a synonym of *C. marssonii* (Hoef-Emden and Melkonian 2003). Our strains in *C. marssonii* correspond closely with the previous descriptions (Skuja 1948; Hoef-Emden and Melkonian 2003). The cells were approximately symmetrical with rounded antapex in ventral view under LM (Fig. 1A) and contained two chloroplasts per cell without pyrenoids. They showed sigmoid shape with the sharply pointed and curved antapex in lateral view (Fig. 1D).

#### ***Cryptomonas pyrenoidifera* Geitler 1922**

**Specimens examined:** Dumo, Jeju, Korea (Oct. 29, 2006; WCK02).

**Light microscopy:** Cells are 15-22  $\mu$ m in length and 10-14  $\mu$ m in width, and ovoid to elliptical in ventral or dorsal view (Figs 2A and 2B). The cells have two opposing pyrenoids and a short furrow with rows of ejectosomes in ventral view (Fig. 2A).

**Electron microscopy:** Cells have a slightly rostrated anterior end and rounded antapex, dorso-ventrally biconvex body, two equal flagella and a short furrow (Figs. 2C and 2D). The periplast has an inner sheet with



**Fig. 2.** Micrographs of *Cryptomonas pyrenoidifera* Geitler. A and B. Light micrographs: A, Ventral view showing a curved short furrow with rows of ejectosomes; B, Ventral view. C, D and E. Scanning electron micrographs: C, Ventro-lateral view showing two equal flagella and a short furrow; D, Lateral view showing a dorsal reflex (arrow) and partially twisted antapex; E, Details of the periplast. Abbreviations: F, furrow; P, pyrenoid. Scale bars: A and B, 10  $\mu\text{m}$ ; C- E, 1  $\mu\text{m}$ .

papilla, lacking discrete periplast areas (Fig. 2E).

**Synonyms:** *Cryptomonas ozolini* Skuja [1939, Acta Horti Bot. Univ. Latv. 11/12: p. 92, pl. V, fig. 12-13]; *Cryptomonas procera* Schiller [1957, Untersuchungen an den planktischen Protophyten des Neusiedlersees 1950-1954, II. Teil, Eisenstadt, p. 33, pl. XI, fig. 48]; *Cryptomonas ovata* var. *palustris* Pringsheim [1968, Nova Hedwigia 16: p. 388]; *Campylomonas reflexa* Hill [1991, Phycologia 30: pp. 175-176, p. 172, fig. 3].

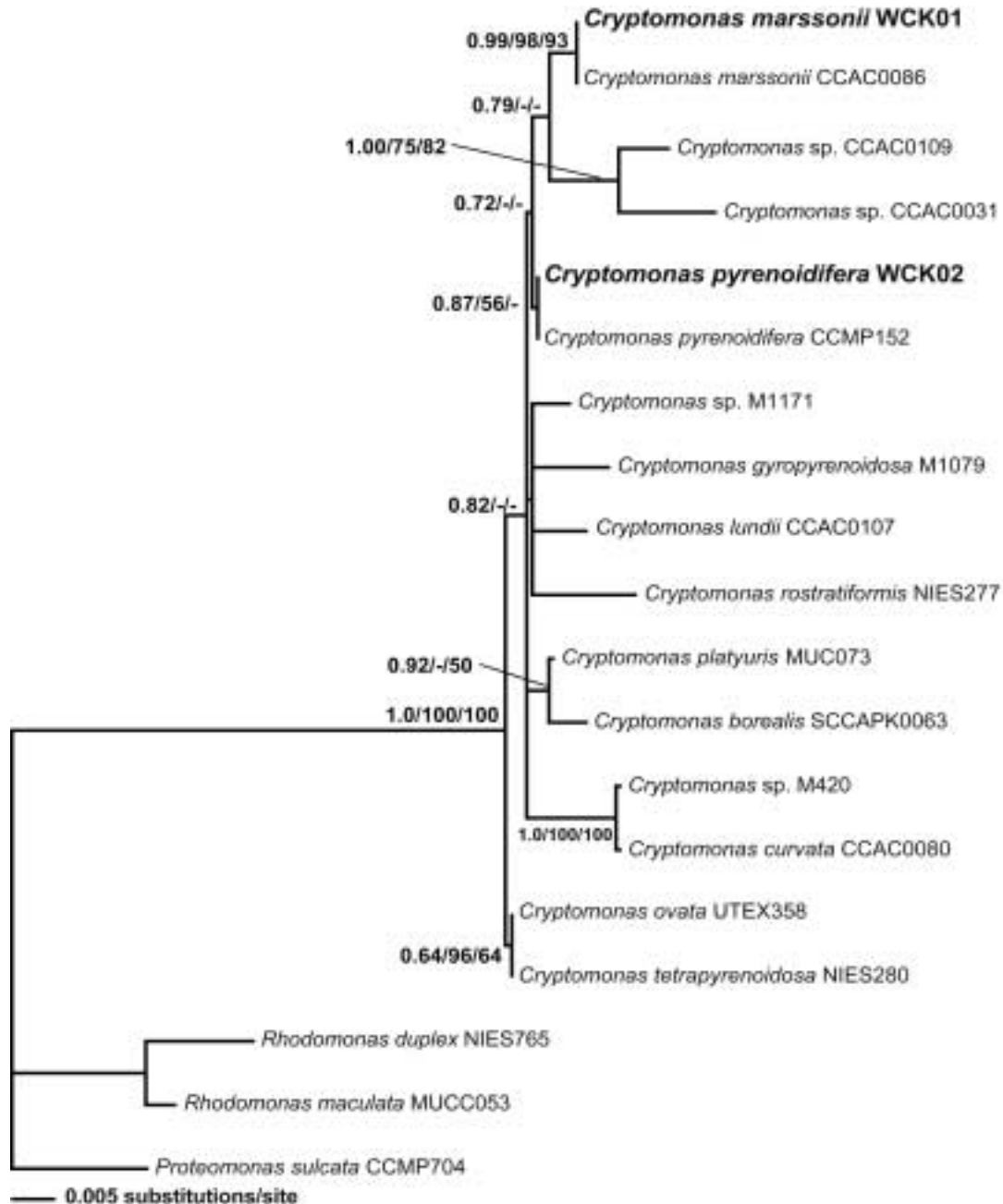
**Remarks:** Based on the cryptomorph cell shape and size, *Cryptomonas pyrenoidifera* was described for the first time by Geitler (1922). Hoef-Emden and Melkonian (2003) reported the dimorphism of *C. pyrenoidifera* within a clonal culture and mentioned a large variety of cell shapes in their descriptions that can be assigned to several previously described species. Based on the cell shape and size, *Cryptomonas ozolini*, *C. procera*, *C. ovata* var. *palustris*, *Campylomonas reflexa* were synonymised by Hoef-Emden and Melkonian (2003). Although no obvious dimorphism was found in this study, *C. pyrenoidifera* strains showed some flexibility of cell shapes and gener-

ally showed a cryptomorph - elliptical in ventral view (Fig. 2B), dorso-ventrally biconvex with rounded antapex (Fig. 2C) - emended diagnosis by Hoef-Emden and Melkonian (2003). Also, a campylomorph - ovoid to asymmetrical in broad view, curved furrow (Fig. 2A), and dorsal reflex and partially twisted antapex in lateral view- was observed (Fig. 2D).

#### Characteristics of SSU rDNA

The nuclear SSU rDNA sequences aligned in this study were 1605 nucleotides for 19 taxa of *Cryptomonas* and putative relatives. Of these, 54 sites (3.4%) were variable and 135 sites (8.4%) were parsimoniously informative. The average nucleotide frequencies of informative positions were 26.4% adenine, 20.1% cytosine, 26.4% guanine, and 27.1% thymine.

Sequences between *C. marssonii* WCK01 from Korea and CCAC0086 from Germany, and between *C. pyrenoidifera* WCK02 from Korea and CCMP152 from Australia were identical, respectively. Interspecific pairwise divergence between *C. marssonii* and *C. pyrenoidifera* from



**Fig. 3.** Rooted Bayesian tree for *Cryptomonas* inferred from nuclear SSU rDNA sequences data (TrN + I + G model). -lnL = 3848.4033, proportion of invariable sites (I) = 0.7226, gamma distribution substitution rates (G) = 0.6745. Species designations in bold face label newly determined here. Bootstrap values in order form left to right: Bayesian posterior probabilities/maximum parsimony/ML. Dashed indicate < 50% bootstrap or < 0.5 Bayesian posterior probabilities.

Korea was 0.6%. Sequence divergence between *Cryptomonas* species from Korea and other countries ranged from 0.4% (between *C. pyrenoidifera* WCK02 and *C. ovata* UTEX358) to 2.1% (between *C. marssonii* WCK 01 and *Cryptomonas* sp. CCAC0031).

The phylogenetic tree constructed by MP, ML and Bayesian analyses resulted in similar topologies as their composition (Fig. 3). All taxa within *Cryptomonas* were

monophyletic (1.0/100/100 for BA/MP/ML), as in a previous study (Hoef-Emden 2007). However, *C. pyrenoidifera* and *C. marssonii* were not grouped together (Hoef-Emden 2007).

## ACKNOWLEDGEMENTS

The authors thank BK21 program for providing the

Post-Doctorial fellowship to J.-H. Kim. This work was supported by a grant from Korea Science & Engineering Foundation (KOSEF R01-2006-000-10207-0).

## REFERENCES

- Archibald J.M. 2007. Nucleomorph genomes: structure, function, origin and evolution. *BioEssays* **29**: 392-402.
- Butcher R.W. 1967. An introductory account of the smaller algae of British coastal waters. Part IV. Cryptophyceae. *Fish. Invest. Ser. IV*: 1-54.
- Cerino F. and Zingone A. 2006. A survey of cryptomonad diversity and seasonality at a coastal Mediterranean site. *Eur. J. Phycol.* **41**: 363-378.
- Chang Y.K. 1981. Additions to the fresh-water algae in Korea (I). *Korean J. Bot.* **24**: 21-26.
- Clay B.L., Kugrens P. and Lee R.E. 1999. A revised classification of Cryptophyta. *Bot. J. Linn. Soc.* **131**: 131-151.
- Deane J.A., Strachan I.M., Saunders G.W., Hill D.R.A. and McFadden G.I. 2002. Cryptomonad evolution: nuclear 18S rDNA phylogeny versus cell morphology and pigmentation. *J. Phycol.* **38**: 1236-1244.
- Douglas S.E. and Penny S.L. 1999. The plastid genome of the cryptophyte alga, *Guillardia theta*: complete sequence and conserved synteny groups confirm its common ancestry with red algae. *J. Mol. Evol.* **48**: 236-244.
- Douglas S.E., Zauner S., Fraunholz M., Beaton M., Penny S., Deng L.T., Wu X., Reith M., Cavalier-Smith T. and Maier U.-G. 2001. The highly reduced genome of an enslaved algal nucleus. *Nature* **350**: 148-151.
- Ehrenberg C.G. 1831. *Symbolae physicae seu icones et descriptiones animalium evertibratorum sepositis insectis quae ex itinere per Africanum Borealem et Asiam Occidentalem Friderici Guilelmi Hemprich et Christiani Godofredi Ehrenberg medicinae et chirurgiae doctorum studio novae aut illustratae redierunt.* Mittler, Berlin.
- Geitler L. 1922. Die Mikrophyten-Biocoenose der Fontinalis-Bestände des Lunzer Unterseens und ihre Abhängigkeit vom Licht. *Int. Rev. Gesamten Hydrobiol.* **10**: 683-689.
- Guillard R.R.L. 1975. Culture of phytoplankton for feeding marine invertebrates. In: Smith W.L. and Chanley M.H. (eds), *Culture of Marine Invertebrate Animals*. Plenum Press, New York. pp. 26-60.
- Hill D.R.A. 1991. A revised circumscription of *Cryptomonas* (Cryptophyceae) based on examination of Australian strains. *Phycologia* **30**: 170-188.
- Hoef-Emden K. 2007. Revision of the genus *Cryptomonas* (Cryptophyceae) II: incongruences between the classical morphospecies concept and molecular phylogeny in smaller pyrenoid-less cells. *Phycologia* **46**: 402-428.
- Hoef-Emden K. and Melkonian, M. 2003. Revision of the genus *Cryptomonas* (Cryptophyceae): a combination of molecular phylogeny and morphology provides insights into a long-hidden dimorphism. *Protist* **154**: 371-409.
- Hoef-Emden K., Marin B. and Melkonian, M. 2002. Nuclear and nucleomorph SSU rDNA phylogeny in the Cryptophyta and evolution of cryptophyte diversity. *J. Mol. Evol.* **55**: 161-179.
- Huelsenbeck J.P. and Ronquist F. 2001. MRBAYES: Bayesian inference of phylogenetic trees. *Bioinformatics* **17**: 754-755.
- Nishijima T. 1990. Growth characteristics of *Plagioselmis* sp. (strain 87) causing freshwater red tide in the lower part of the Nakasuji River, Japan. *Bull. Jap. Soc. Sci. Fish.* **56**: 353-359.
- Novarino G. 2003. A companion to the identification of cryptomonad flagellates Cryptophyceae (= Cryptomonadea). *Hydrobiologia* **502**: 225-270.
- Novarino G. and Lucas I.A.N. 1993. Some proposals for a new classification system of the Cryptophyceae. *Bot. J. Lin.* **111**: 3-21.
- Posada D. and Crandall K.A. 1998. Modeltest: Testing the model of DNA substitution. *Bioinformatics* **14**: 817-818.
- Pringsheim E.G. 1968. Zur Kenntnis der Cryptomonaden des Süßwassers. *Nova Hedwigia* **16**: 367-401.
- Schiller J. 1957. Untersuchungen an den planktischen Protophyten des Neusiedlersees 1950-1954, II. Teio. Burgenländisches Landesmuseum, Eisenstadt, 44 pp. pl. 1-12.
- Skuja H. 1939. Beitrag zur Algenflora Lettlands II. *Acta Horti. Bot. Univ. Latv.* **11/12**: 41-169.
- Skuja H. 1948. Taxonomie des Phytoplanktons einiger Seen in Uppland, Schweden. *Symb. Bot. Ups.* **9**: 1-399.
- Smith S.W., Overbeek R., Woese C.R., Gilbert W. and Gillevet P.M. 1994. The genetic data environment: an expandable GUI for multiple sequence analysis. *Comput. Appl. Biosci.* **10**: 671-675.
- Swofford D.L. 2002. PAUP\*: Phylogenetic Analysis Using Parsimony (\*And Other Methods) Version 4.0b8. Sinauer Associates, Sunderland, MA.

Received 7 July 2007

Accepted 21 August 2007