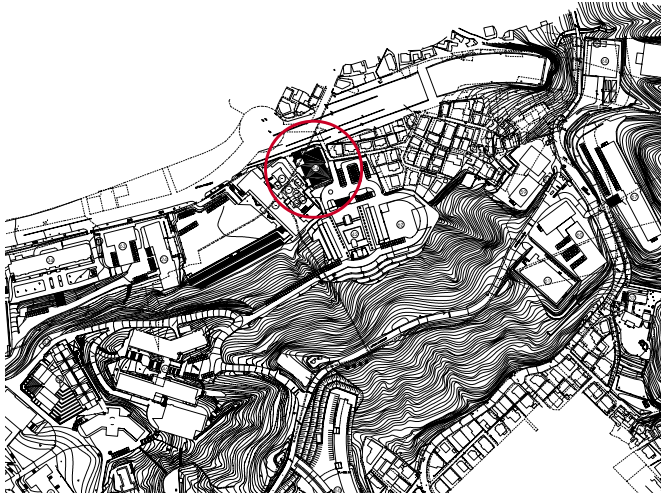


이화여자대학교 사범대학

Education Building, Ewha Womans University

works



47
 , 1 , 2 ,
 538,721.80㎡
 78,608.99㎡
 369,000.29㎡
 14.59%
 53.98%
 2 , 6
 THK30 , THK30
 THK30
 THK24 , THK24
 THK30 , THK30
 ()
 ()
 ()
 ()
 2004. 1. ~ 2004. 8.
 2004. 9 ~ 2006. 3

Location 47 Daesin-dong, Seodaemun-gu, Seoul, Korea
 Site area 538,721.80㎡
 Bldg. area 78,608.99㎡
 Gross floor area 369,000.29㎡
 Bldg. coverage ratio 14.59%
 Gross floor ratio 53.98%
 Structure S.R.C
 Bldg. Scale B2, F6
 Design period 2004. 1. ~ 2004. 8.
 Construction period 2004. 9 ~ 2006. 3



DIAGRAM WALL

가 Diagram Wall

4

가

MULTIPLEX FUNCTION & SPACE

3가

3

가

2

가

1

가

가

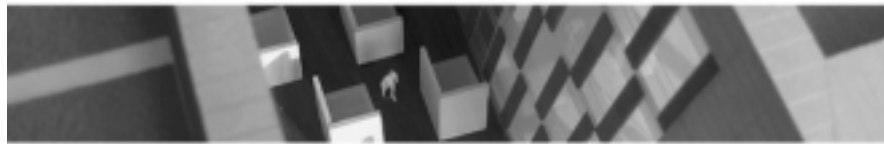


CONTEXT & CAMPUS-SCAPE

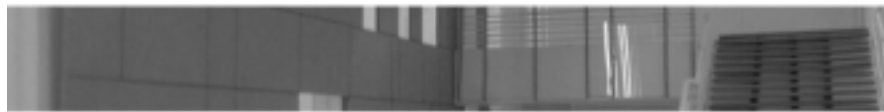
□

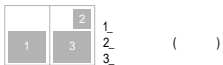
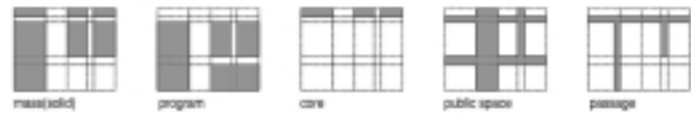
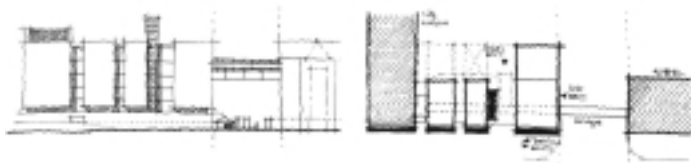


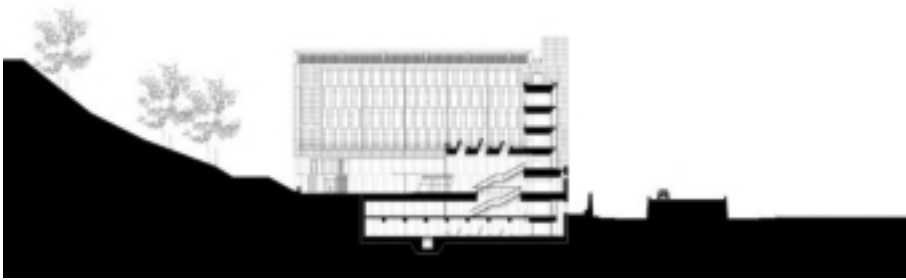
MATERIAL & DETAIL



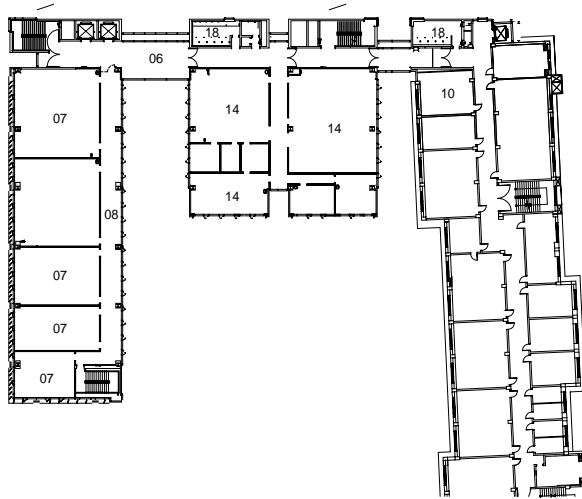
□



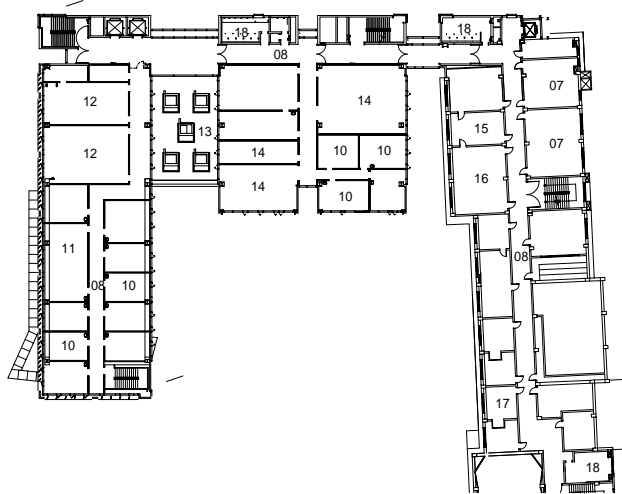




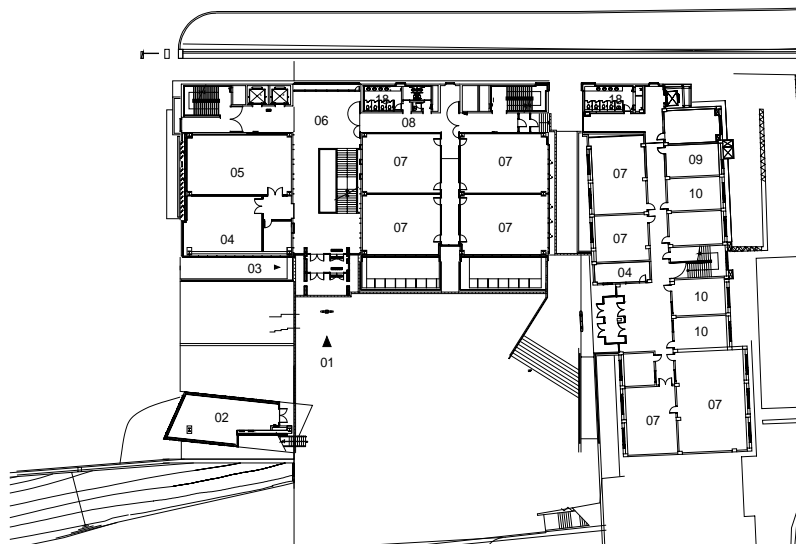
- 01_
- 02_
- 03_
- 04_
- 05_
- 06_
- 07_
- 08_
- 09_
- 10_
- 11_
- 12_
- 13_
- 14_
- 15_
- 16_
- 17_
- 18_



4



3



1