

(The Method of Hi - Form Deck System)



( ) ( )

1.

가

가

가

< 1>

, 가 , ( ) ,

가

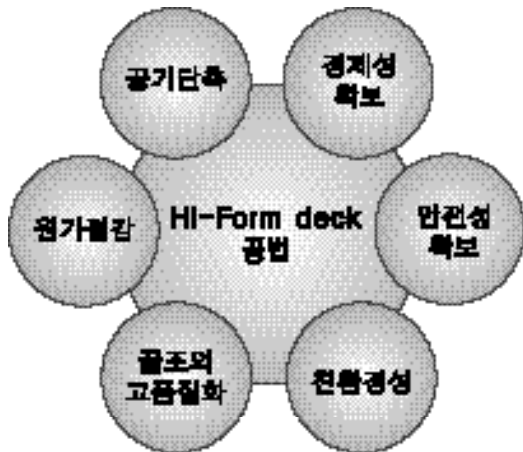
가 가

(Hi-Form Deck)

2006 6

493

가 가



2.

2.1

(無支柱)

, Snap Tie,

Wedge Pin, Hanger

Snap Tie

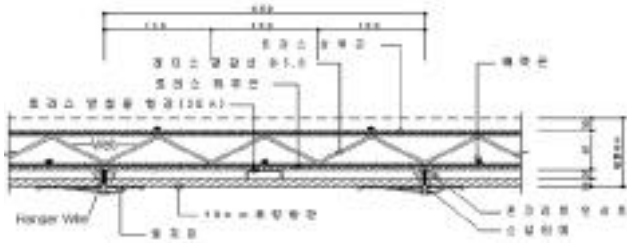
가

가

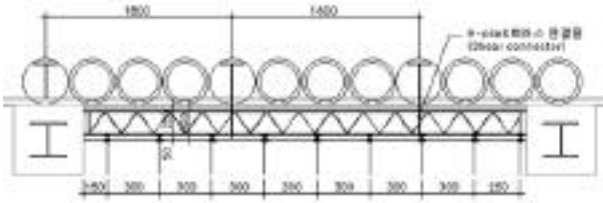
< 1>

(Hi-Form Deck)

Hanger



< 2>



< 3>

Open Web Steel Joist

< 2>

< 3>

< 1>

2.2

(Hi-Form Deck)

< 2>, < 3>

2.3

가

가

가

가

가

가

가

가

가

가

가

가

< 1>

	150mm	, D5.8
Snap Tie		
	5.8,	:
	PET/PP Slab Conc	
	: 12mm, 15mm, 17mm, 19mm : 3'x6', 4'x8', 4'x9', 4'x10' (Snap Tie)	
Wedge Pin	Snap Tie	가
	□-150 * 58,	

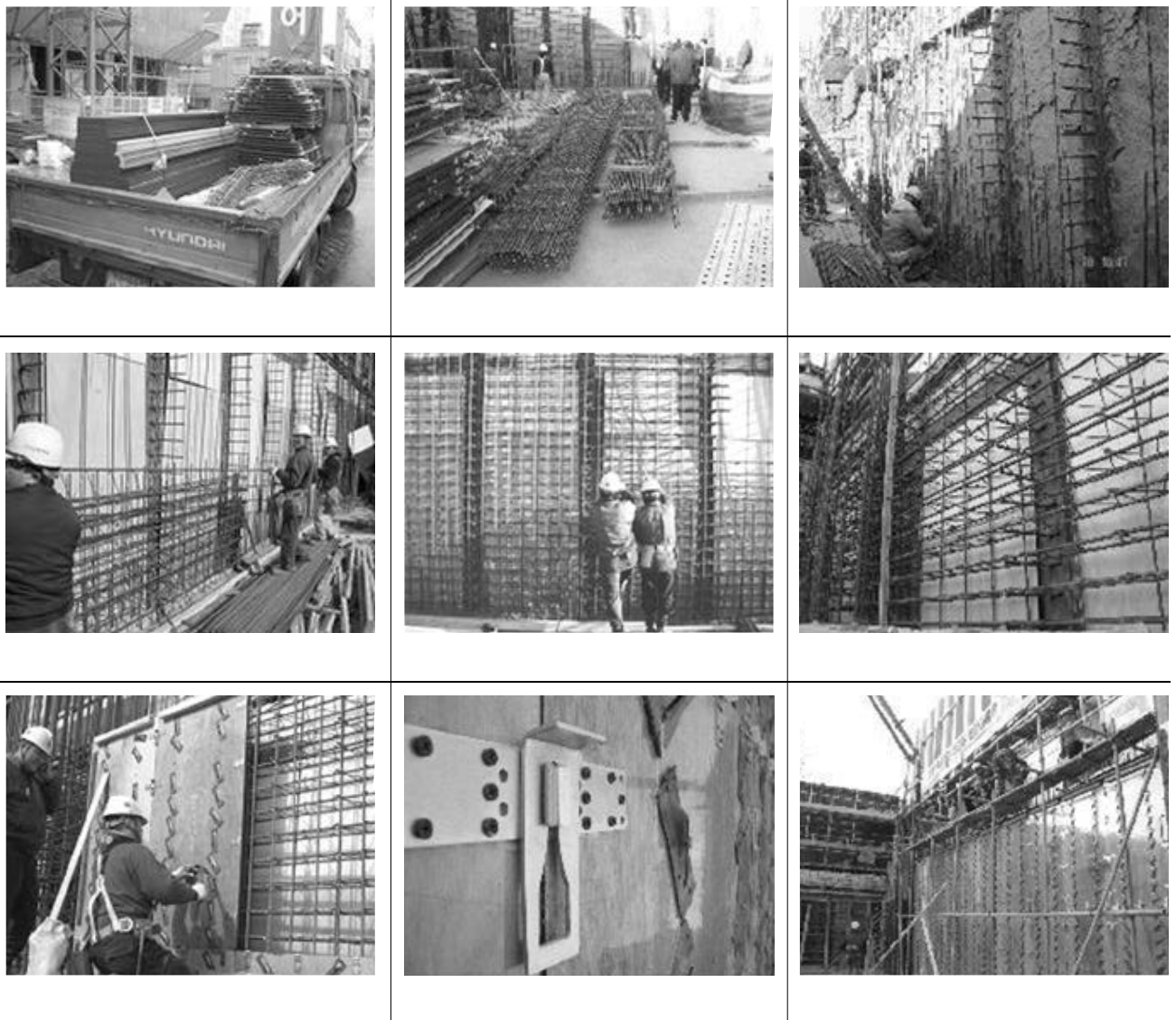
2.4

< 4>

3.

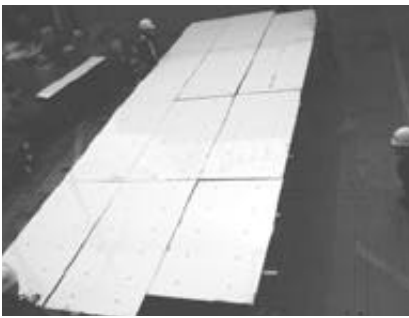
가

< 2 >



< 4 >

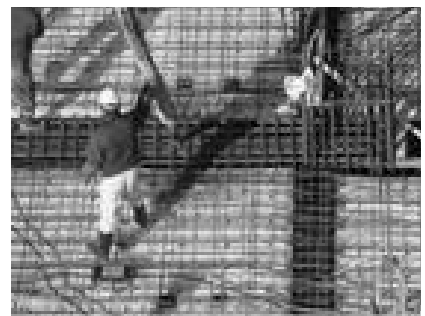
No.								
1	414-2 6		1,131,210㎡	24~34 , 40	3,226	RC	1,2	1~5 ,
2	37가 46 2		52,277㎡	2 , 14		RC	1	1 ~14
3	197-5		46,628㎡	1 , 4		RC	( 1 ) ,	( )
4	54		203,947㎡	4 , 14		SRC	:	:
5	36-1		330,282㎡	1 , 13		RC	:	:
6	573-13		22,358㎡	2 , 11		RC	:	:
7	701-1		21,505㎡	7 , 17		RC	:	:
8	190-1	SK	196,562㎡	4 , 15		RC	:	:
9	27가 273-10		8,362㎡	2 , 8		RC	:	:
10	197-28		32,925㎡	2 , 13		RC	:	:



Wedge Pin



Setting



가 가 가 . 가 가 46% 가 , 가  
3.1 29.2%가

Ferro Deck < 5>

Super Deck    Ferro Deck    1m<sup>2</sup>    가

9    150mm    가

~ 10%    , Deck Plate    (    )

가    가

10%    가    3.2

Super Deck

< 5>

( )

		가			가			
	(3 )	m <sup>2</sup>	1	29,608	29,608	1	1,249	1,249
			1	300	300			
	(3 )	m <sup>2</sup>	0.3	1,249	375			
	(3 )	m <sup>2</sup>				1	5,723	5,723
	( )	m <sup>2</sup>				1	13,723	13,723
		30,283			20,695			
			1	3,915	3,915			
			1	4,570	4,570			
		m <sup>2</sup>	0.3	4,766	1,430	1	4,766	4,766
	가	m <sup>2</sup>				1	12,002	12,002
		m <sup>2</sup>				1	19,311	19,311
		9,915			36,079			
		40,198			56,774			
		70.8%			100%			
		• 3			• 1m <sup>2</sup> 25kg			
		• 30%						

		Dcck						
		Super Deck			Ferro Deck			
		가			가			
	Dcck( 5%)	m <sup>2</sup>	1.05	29,000	30,450	1.05	28,800	30,240
	(D10,D13)	kg	5	527	2,635	5	527	2,635
		kg	5	527	2,635	0.025	2,443	61
			1	259	259	1	259	259
	(3 )	m <sup>2</sup>	0.3	1,249	375	0.3	1,249	375
		33,780			33,570			
	Deck Plate	m <sup>2</sup>	0.025	14,935	375	0.025	14,935	373
	Deck Plate	m <sup>2</sup>	1	8,868	8,868	1	8,868	8,868
		m <sup>2</sup>	0.3	4,766	1,430	0.3	4,766	1,430
		10,671			10,671			
		44,451			44,241			
		78.3%			77.9%			
		• 1000m <sup>2</sup>	250m	m <sup>2</sup> 0.25				
		• 30%						

\* : 2005 ( )

< 6>

				Super Deck	Ferro Deck
( + )	1	62m <sup>2</sup>	30m <sup>2</sup>	60m <sup>2</sup>	60m <sup>2</sup>
	( )	16.1 (1000m <sup>2</sup> ÷ 62m <sup>2</sup> / )	33.3	16.7	16.7
	(H)	128.8 (16.1 × 8 )	266.4	133.6	133.6
	1	70m <sup>2</sup>	50m <sup>2</sup>	70m <sup>2</sup>	70m <sup>2</sup>
	( )	14.3 (1000m <sup>2</sup> ÷ 70m <sup>2</sup> / )	20	14.3	14.3
	(H)	114.4 (14.3 × 8 / )	160	114.4	114.4
+ ( )		243.2 (128.8+114.4)	426.4	248	248
1		243.2 ÷ 8 = 30.4, 1000 ÷ 30.4 = 32.9m <sup>2</sup> / ( + + )	18.8m <sup>2</sup> / ( + + )	32.3m <sup>2</sup> / ( + )	32.3m <sup>2</sup> / ( + )
1000m <sup>2</sup> (5 )		6	10.6	6.2	6.2
		57 %	100%	58%	58%
• 1 8		1000m <sup>2</sup> ,			

- 3
1. 2 “ ; ” , 20 6 , 2004.6.
  2. “Composit Metal Deck Slab System ”, 1997.4.
  3. 4 “ ; ” , 2002.4.
  4. 2 “ITECH ” , 2003.6.
  5. “ ; ??? ” , 16 , 2000.6.
  6. “HIFORM DECK ”, 2005.6.
  - 7.( ) “ ; ” , 2005.4
  - 8.( ) “JIF DECK ”
  - 9.( ) “Super Deck ”, 1998.
  10. “Ferro Deck ”

4. 3D

가

가