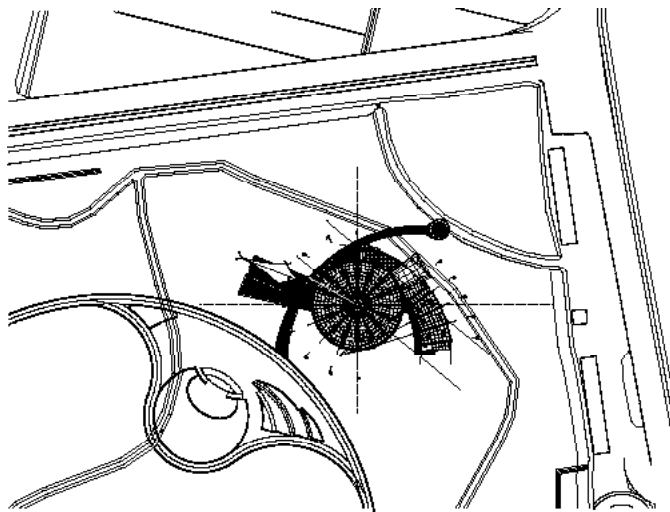


A Glass Hothouse over the Water of Muan White lotu

<2006

>



422-4, 45

19,931.00㎡

947.10㎡

1,283.92㎡

4.75%

6.44%

2

T18 ( )

2004. 2 ~ 2004. 5. 12

2004. 11 ~ 2005. 7



Location 422-4, Bokyong-ri, Illo-eup, Muan-gun, Jeollanam-do, Korea

Site area 19,931.00㎡

Bldg area 947.10㎡

Gross floor area 1,283.92㎡

Bldg coverage ratio 4.75%

Gross floor ratio 6.44%

Structure S.R.C

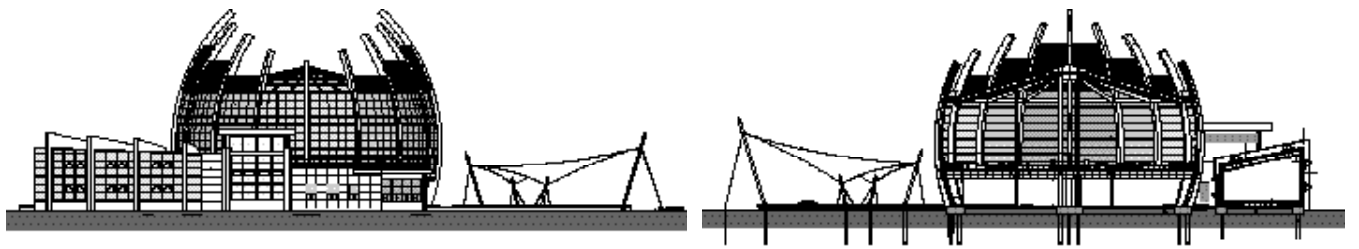
Bldg. Scale F2

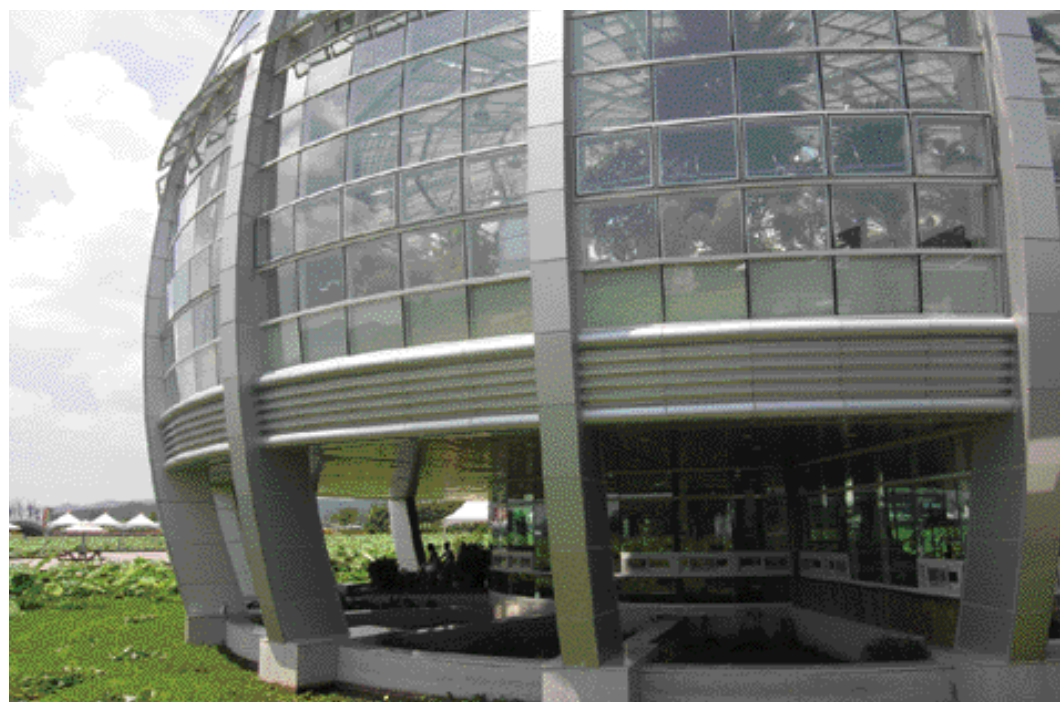
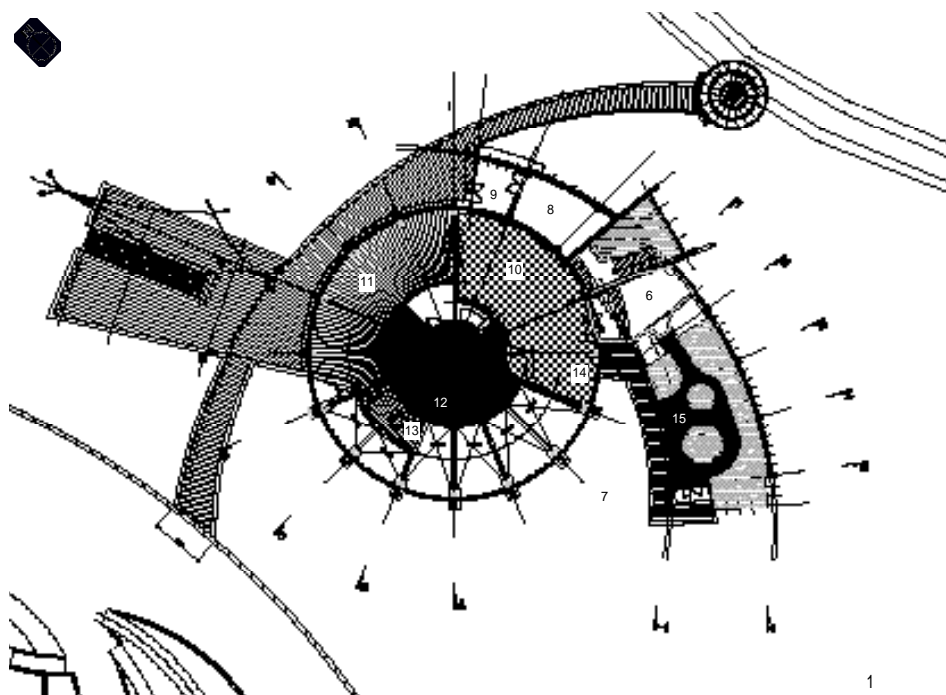
Design period 2004. 2 ~ 2004. 5. 12

Construction period 2004. 11 ~ 2005. 7



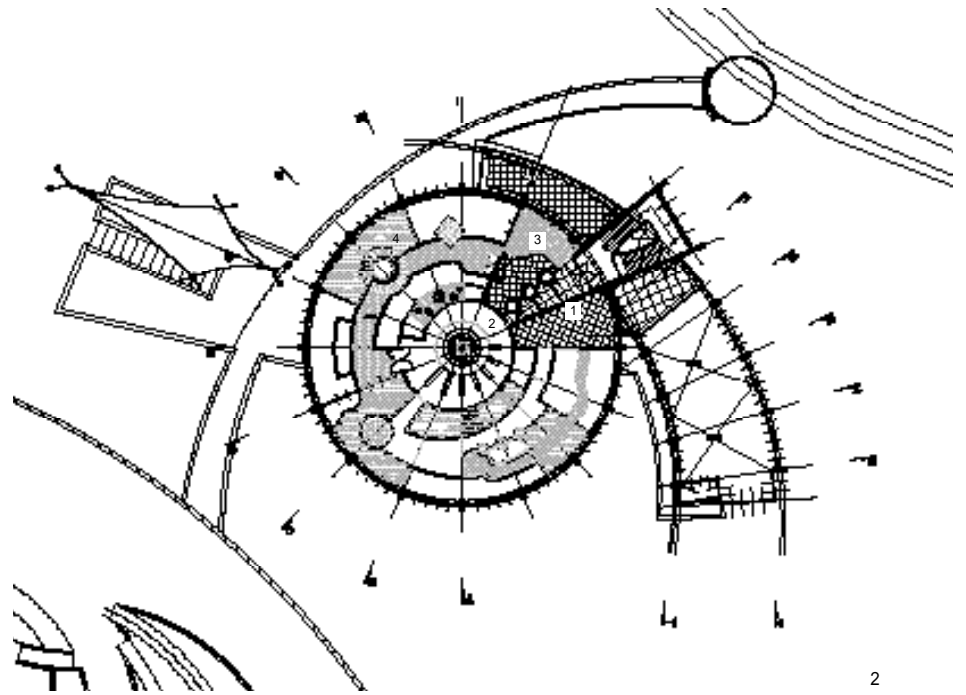
가  
·







- 01\_
- 02\_
- 03\_
- 04\_
- 05\_
- 06\_
- 07\_
- 08\_
- 09\_
- 10\_
- 11\_
- 12\_
- 13\_
- 14\_
- 15\_



2

1	2	3	4
2	3	4	1

