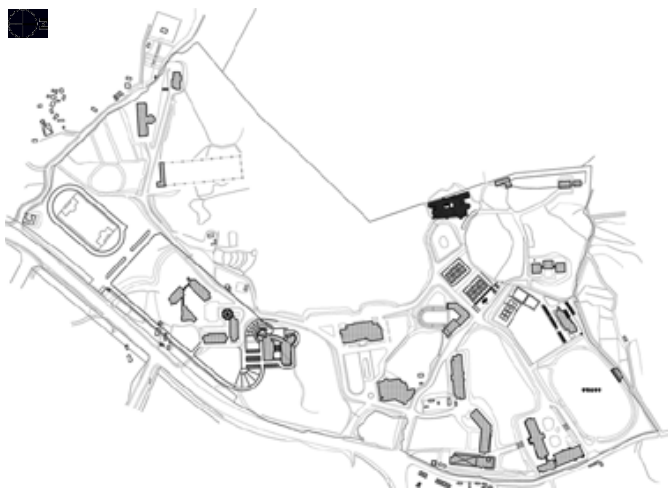


Dormitory of Dong-Shin University

() ()



252

543,004.00㎡
 2,778.90㎡
 12,884.77㎡
 5.57%
 19.07%
 10

THK16
 2002. 12 ~ 2003. 08
 2003. 09 ~ 2004. 12



Location Dongshin Univ, Daeho-dong, Naju-si, Jeollanam-do, Korea
 Site area 543,004.00㎡
 Bldg area 2,778.90㎡
 Gross floor area 12,884.77㎡
 Bldg coverage ratio 5.57%
 Gross floor ratio 19.07%
 Structure SRC
 Bldg. Scale F10
 Design period 2002. 12 ~ 2003. 08
 Bldg. Scale 2003. 09 ~ 2004. 12





가 2

4.2m 가 ,가 (. . .)

가 800 가 가

가 , 4 가

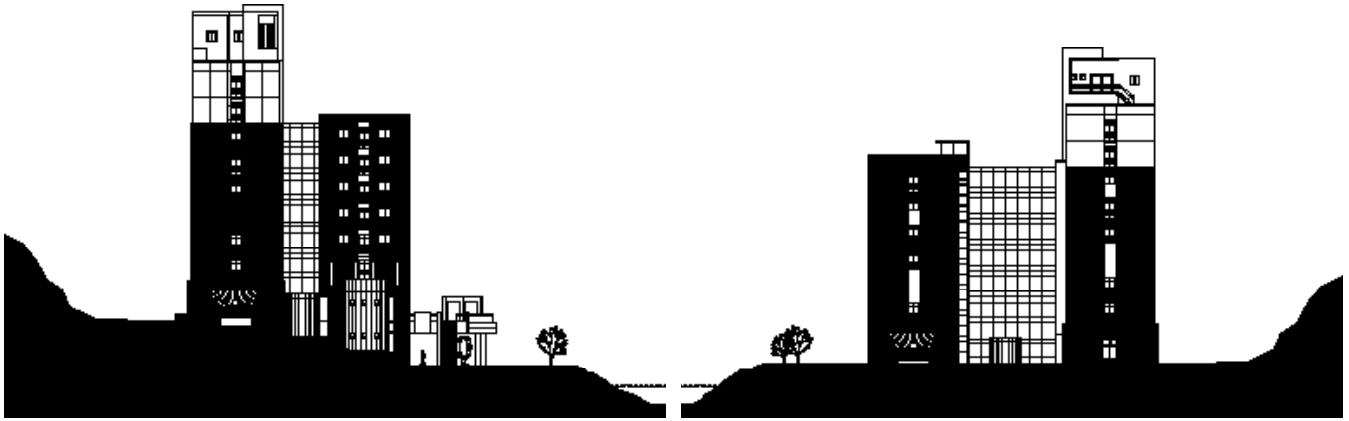
4.2m 10 가

가 (. , 24)

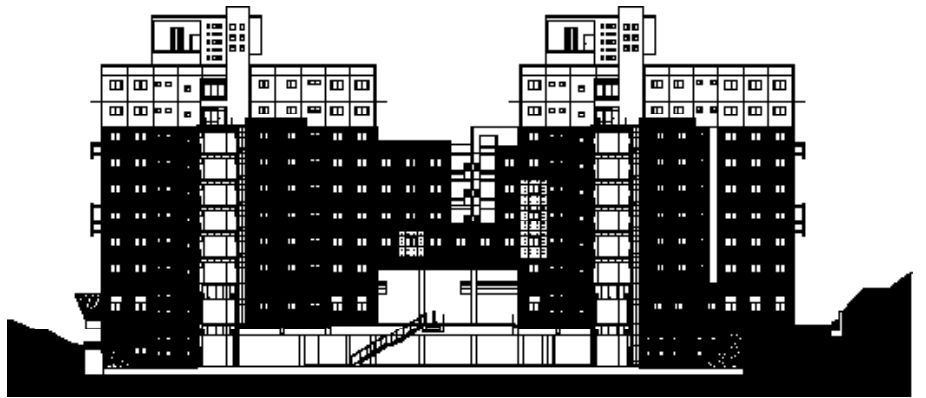
가 가 가

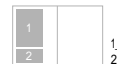
“男左女右” 가 가

(.) 가 圖

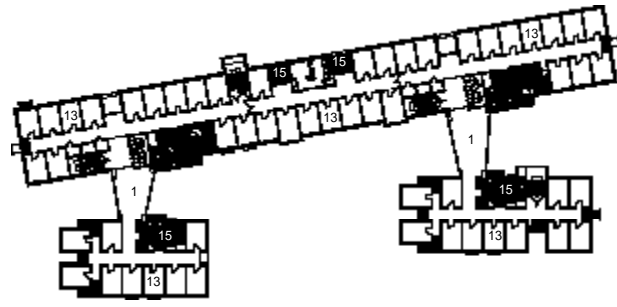


		1.
1	2	2.
3	4	3.
	5	4.
		5.



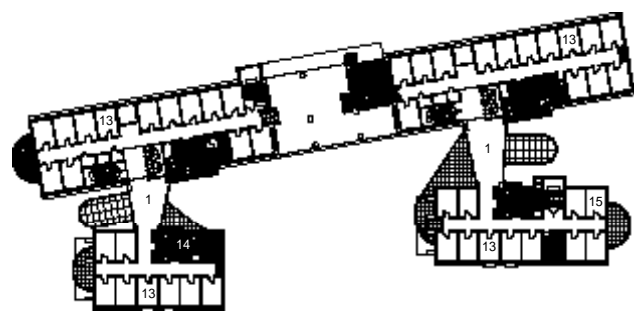


가

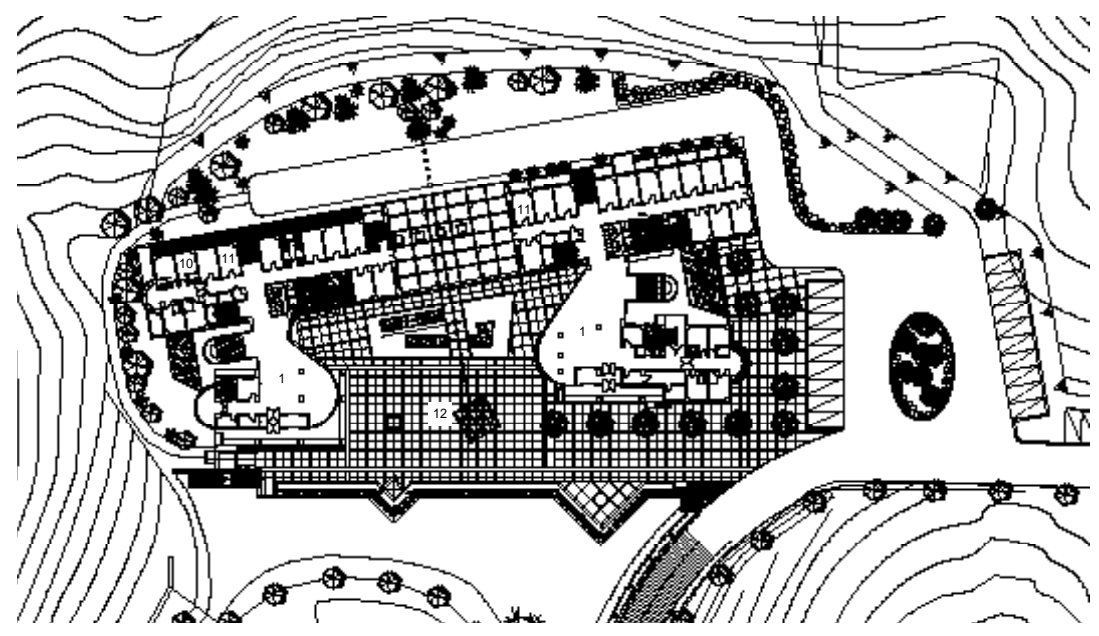


4

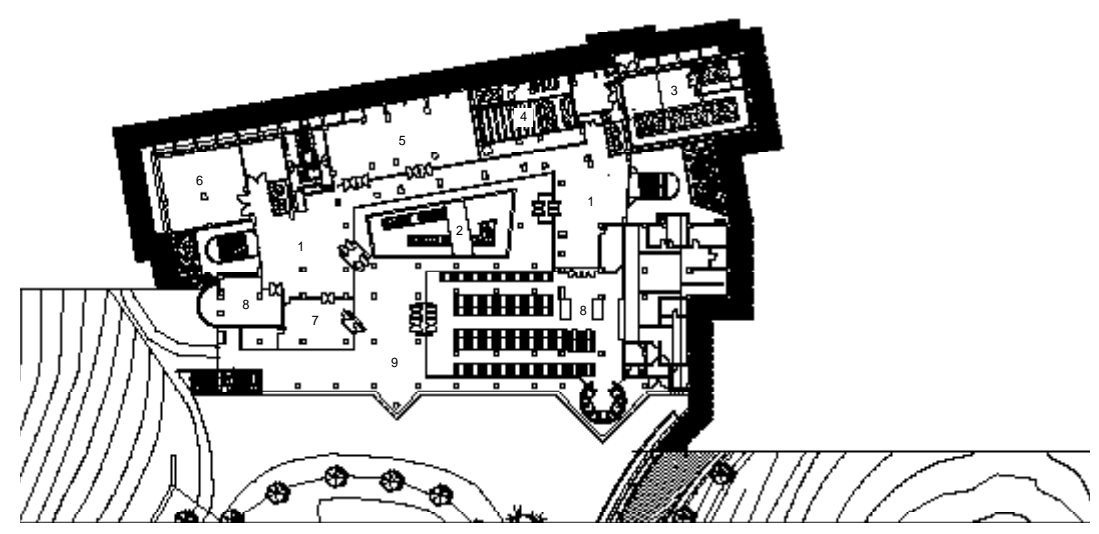
- 01_
- 02_
- 03_
- 04_
- 05_
- 06_
- 07_
- 08_
- 09_
- 10_ 1
- 11_
- 12_ 2
- 13_ 2
- 14_
- 15_



3



2



1