



() CJ BU PM

		3	6	9	1	3
	(2006 09)	(2006 06)	(2006 03)	(2005 12)	(2005 09)	(2003 09)
	467,602	471,414	481,785	478,865	485,429	526,239
	264,473	266,768	271,624	270,808	276,996	296,843
	221,497	224,677	234,599	227,111	230,532	244,086
가	8,508	8,641	8,918	8,923	9,183	10,803
	55	55	54	54	53	49
	20,453	20,750	21,777	20,664	19,218	17,012

< : 「가」 >

2006 2005 1,587 3%

. 2006 1,540 .

2,200

1.7% 가 , TMR

2006 2005 3,028 가 . 2005

2.2% 가 3,090 . TMR 1,000

2006 TMR

. TMR

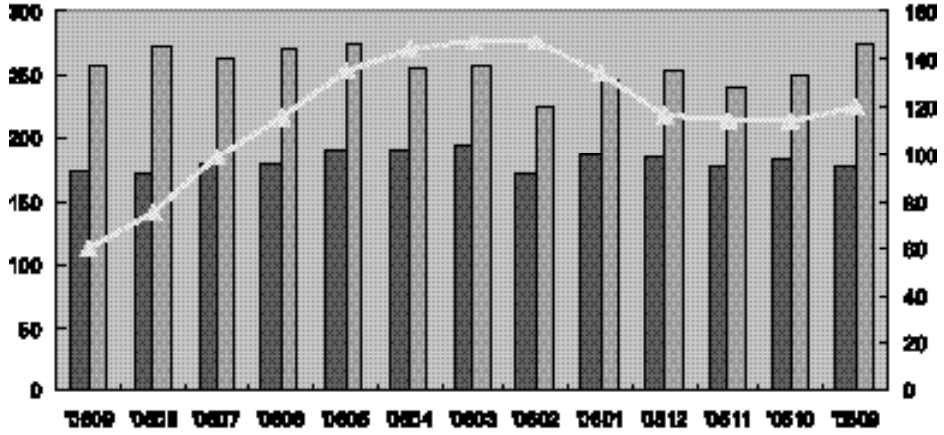
2007 가

가 ,

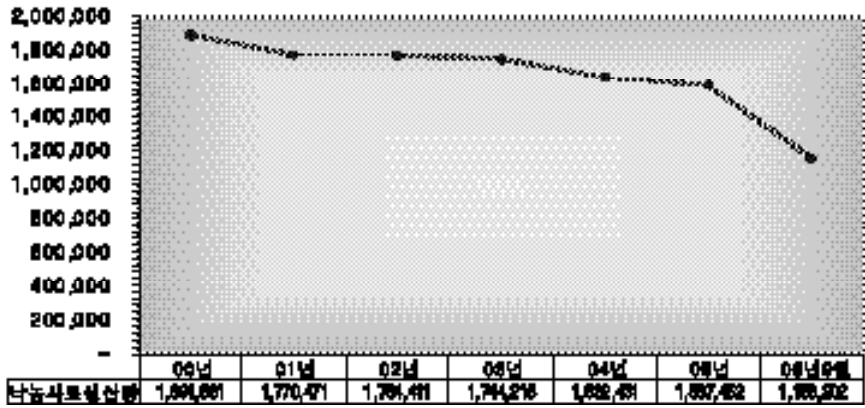
2007

2006 3% 1,500

9 1,158 , .



< : , 가 >



2006

가

가 가
가

가

가

2007



가 , “
가 ; 2007
4 “ HACCP ”
가
가

