

## *Corydalis misandra* B.U.Oh: A new species of *Corydalis* sect. *Corydalis* (Fumariaceae) from Korea

Byoung-Un Oh\* and Hyeok-Jae Choi<sup>1</sup>

\*School of Life Science, Chungbuk National University, Cheongju, Chungbuk 361-763  
and <sup>1</sup>Division of Specimens and Genetic Resources, Korea National Arboretum,  
Pocheon, Gyeonggi 487-821, Korea

A new species of *Corydalis* sect. *Corydalis* (Fumariaceae), *C. misandra* B.U.Oh, is described from the provinces of Gyeonggi-do and Gangwon-do in Korea. The new species is distinct from its close relative *C. namdoensis* in having elliptic or linear leaflet shape, entire or slightly dentate bract apex, broad and rhomboidal lower outer petal, 14 papillate stigma, oblong stamen and linear capsule with one rowed seeds, etc.

**Keywords:** Fumariaceae, *Corydalis* sect. *Corydalis*, new species, *Corydalis misandra*

Korean taxa of the genus *Corydalis* were recently revised, and 20 species representing four sections and four subsections were recognized (Oh, 1999). These studies did not include *C. bungeana* Turcz., *C. buschii* Nakai, and *C. gigantea* Trautv. et Meyer because they are distributed in North Korea only. Among these 20 species, eight of them are endemic to Korea; *C. albipetala* B.U. Oh, *C. filistipes* Nakai, *C. hirtipes* B.U. Oh et J.G. Kim, *C. grandicalyx* B.U. Oh et Y.S. Kim, *C. hallaisanensis* Léveillé, *C. humilis* B.U. Oh et Y.S. Kim, *C. maculata* B.U. Oh et Y.S. Kim and *C. namdoensis* B.U. Oh et J.G. Kim (Kim and Oh, 1987; Oh, 1996; Oh and Jang, 2002; Oh *et al.*, 2004)

In the present work, a plant of *Corydalis* sect. *Corydalis* collected from many places of Province Gyeonggi-do and Gangwon-do in Korea since 2001 is described as a new species, *C. misandra* B.U.Oh. This new species is clearly distinguished from its close relative, *C. namdoensis*, by its elliptic or linear leaflet shapes, entire or slightly dentate

---

\*Corresponding author: Phone: +82-43-261-2296, Fax: +82-43-271-5787, obutaxon@chungbuk.ac.kr  
Received: 8 June 2006. Accepted: 15 June 2006.

bract apex, broad and rhomboidal lower outer petal, 14 papillate stigma, oblong stamen, linear capsule, one rowed seed arrangement in a capsule, short and stumpy caruncle *etc.* This plant is also easily separated from *C. albipetala* by its shapes of flowers and fruits.

***Corydalis misandra* B.U.Oh, sp. nov. (Figs. 1 and 2)**

**Holotype:** KOREA. Province Gyeonggi-do, Gwangju-si, Jungbu-myeon, Namhansanseong, 37°28'31.96"N, 127°14'23.19"E, 9 Apr. 2005, *B.U.Oh 2005001* (CBU)

**Isotypes:** CBU

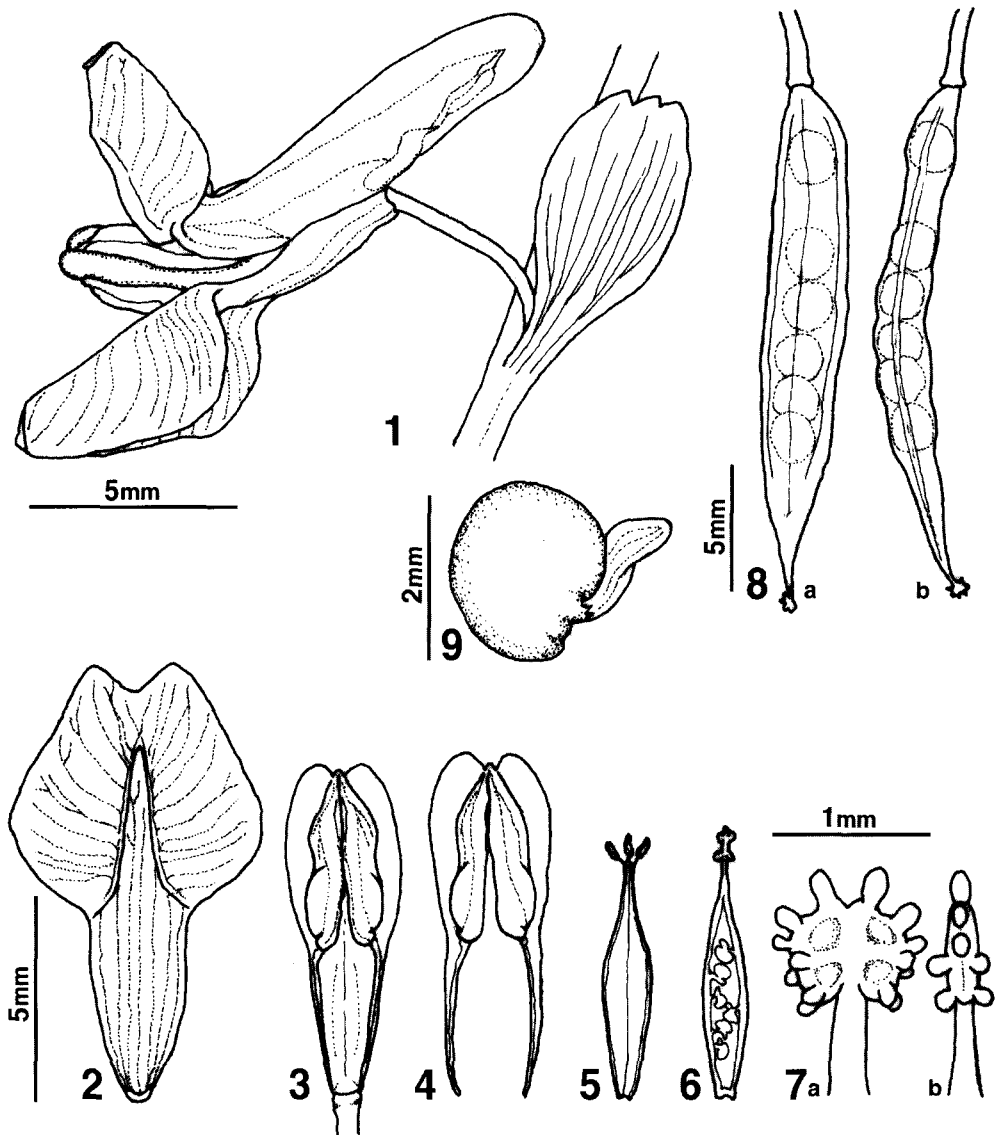
Perennis, crescens et florens ab mense Aprili usque ad mensem Maium, glabra. Rhizoma 1-6 cm longa, tubere sphaerico, 1-2 cm diam., colore facie interiori alba. Cataphyllum squamiforme singulum, 0.5-1.7 cm longum. Caules 1-5, e basi cataphylli exeuntes, 10-20 cm longi, 1.5-2 mm diam., teretes. Folia caulina 2, petiolata; petiolis 2-5 cm longis; laminis 3-6 cm longis, 3-9 cm latis, ternatis usque biternatis; foliola integra. Inflorescentia terminalis, racema, floribus 2-15; bractee ellipticae, 0.4-0.8 cm longae, 2-5 mm latae, apice integro; pedicellus floralis 0.5-1.9 cm, fructifer 1.2-2.3 cm longus. Flores interdum caeruleo-albi, 1.2-1.8 cm longi; calcari 5-7 mm longo; petalo interiore apice V-forme; stigma 14 papillate. Fructus est capsula, late plano-fusiformis, 1.8-2.2 cm longa, 2.1-2.3 mm lata. Semina plana, sphaerica, nitida, 1.8-2.0 mm longa, 1.8-2.0 mm lata, fere 1 seriata.

Perennial herb, growing from April to May, glabrous. Rhizome 1-6 cm long, with tuber; tuber spherical, 1-2 cm in diam., inside color of tuber white. Squamiform leaf 1, 0.5-1.7 cm long. Stems 1-5, originated from base of squamiform leaf, 10-20 cm long, 1.5-2 mm in diam., circular in cross section. Cauline leaves 2, petiolate; petioles, 2-5 cm long; blade 3-6 cm long, 3-9 cm wide, ternate to biternate; leaflets entire at apex. Inflorescences terminal, racemes, 2-15 flowered, flowering from April to May; bracts elliptic or ovate, 0.4-0.8 cm long, 2-5 mm wide, entire or slightly dentate at apex; pedicels 0.5-1.9 cm long when flowering, 1.2-2.3 cm when fruiting. Flowers white, sky blue or whitish blue, 1.2-1.8 cm long; spur 5-7 mm long; inner petal v-shaped at apex; stigma with 14 papillae. Fruits capsule, linear, 1.8-2.2 cm long, 2.1-2.3 mm wide. Seeds flat, spherical, glossy, 1.8-2.0 mm long, 1.8-2.0 mm wide, caruncle short and stumpy, arranged in one row in a capsule.

**Table 1.** Comparison of major characters between *C. misandra* and *C. namdoensis*

Characters		<i>C. misandra</i>	<i>C. namdoensis</i>
	Simple unicellular hairs	absent	absent
Leaf	blade shape	ternate to biternate	ternate to biternate
	leaflet shape	<b>elliptic or linear</b>	very variable such as rotundiloba, lineariloba, pectinata, fumariaefolia types of leaflets
	leaflet apex	<b>entire</b>	entire or lobate or parted
Bract	shape	<b>elliptic or ovate</b>	very variable
	apex	<b>entire or slightly dentate</b>	entire or cleft
Pedicel	length	0.5-1.4 cm, 2.1 cm when fruiting	0.5-1.9 cm, 2.3 cm when fruiting
Flower	colour	<b>sky blue or whitish blue</b>	white or whitish blue
	length	1.2-1.8 cm	1.2-1.6 cm
	inner petal apex	round, V-shaped	round, V-shaped
	front edge of lower outer petal	<b>broad and rhomboidal</b>	broad and oval with rather undulate margin
Stigma	No. of papillae	14	12
Stamen	shape	<b>oblong</b>	oval
Capsule	shape	<b>linear</b>	broadly flattened fusiform
	length	<b>1.8-2.2 cm</b>	1.0-1.2 cm
	width	<b>2.1-2.3 mm</b>	5-6 mm
Seed	arrangement	<b>in one row</b>	in two rows
	width	1.8-2.0 mm	1.8-2.0 mm
	shape of caruncle	<b>short and stumpy</b>	long and slender
Distribution		GW: Cheongtaesan Gwangdeoksan GG: Gwangneung, Cheonmasan, Jijangbong, Gwangdeoksan Dongmakgol Namhansanseong Aengjabong Nojeokbong	CN: Seodaesan GB: Seonamsan, Ilwolsan, Ulryonsan JB: Mandeoksan

GW: Gangwon-do GG: Gyeonggi-do CN: Chungcheongnam-do GB: Gyeongsangbuk-do  
JB: Jeollabuk-do



**Fig. 1.** *Corydalis misandra* B.U.Oh. 1. Flower and bract, 2. Lower part of outer petal, 3. Inner shape of flower which was removed outer petals, 4. Inner petals with V-shaped apex, 5. Membraneous stamen, 6. Ovary with one-rowed ovules, 7. Stigma with 14 papillae (a: front view b: lateral view), 8. Linear capsule and seed arrangement (a: front view b: lateral view), 9. Carunculate seed. Scale bar: 1 = 5 mm, 2 to 6 = 5 mm, 7 (a, b) = 1 mm, 8 (a, b) = 5 mm, 9 = 2 mm.

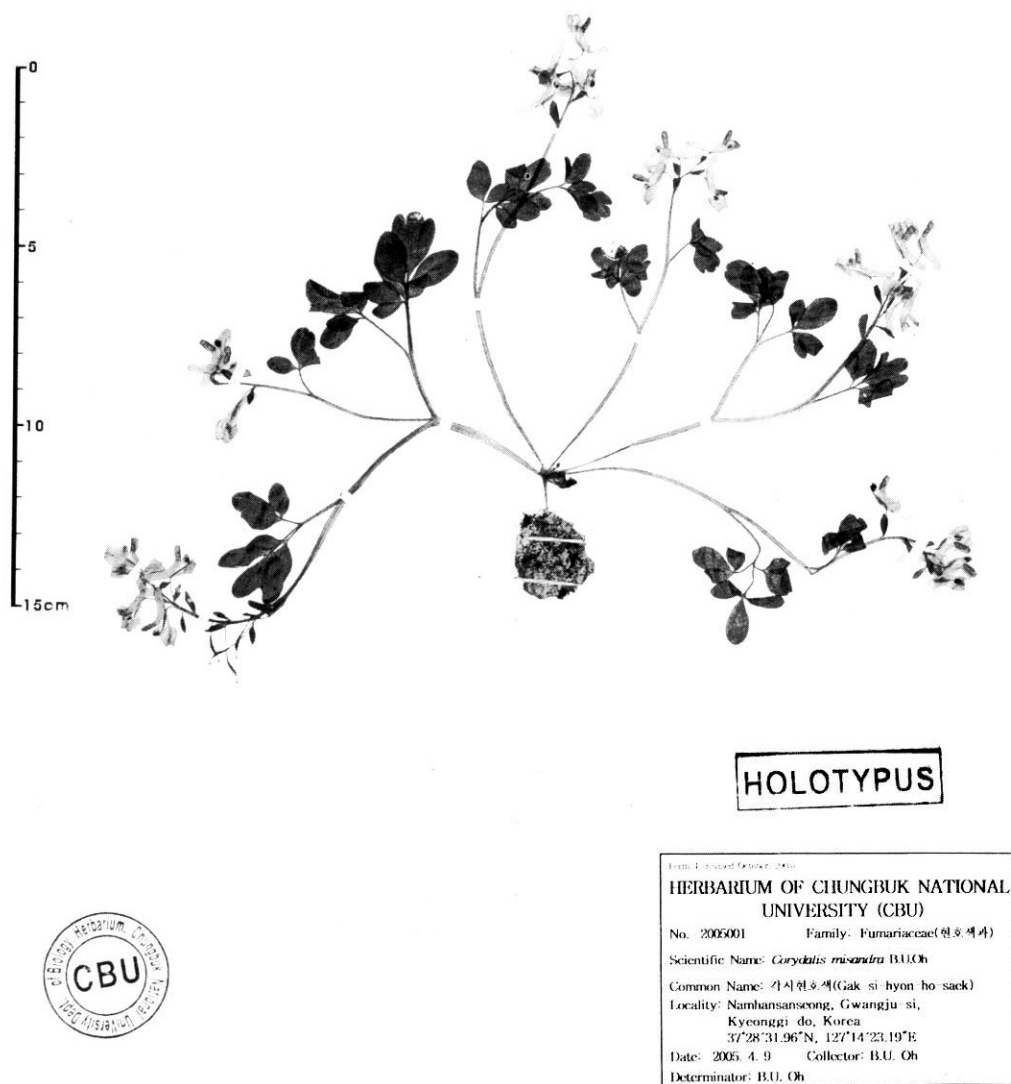


Fig. 2. Holotype of *Corydalis misandra* B.U. Oh, *B.U. Oh* 2005001 (CBU).

**Korean name:** 각시현호색 (Gak-si-hyon-ho-saek)

**Distribution:** **Gangwon-do:** Cheongtaesan (Hoengseong-gun), Gwangdeoksan (Hwacheon-gun) / **Gyeonggi-do:** Gwangdeoksan, Gwangneung & Jijangbong

(Pocheon-si), Cheonmasan (Namyangju-si), Dongmakgol (Yoeuncheon-gun), Namhansanseong & Aengjabong (Gwangju-si), Nojeokbong (Yangpyeong-gun)

**Paratypes:** Nojeokbong, Yangpyeong-gun, **Gyeonggi-do**, B.U.Oh 050409-001 to -004; Namhansanseong, Gwangju-si, **Gyeonggi-do**, B.U.Oh 060422-001 to -003; Gwangdeoksan, Hwacheon-gun, **Gangwon-do**, H.J.Choi 050409-001 to -006; Cheonmasan, Namyangju-si, **Gyeonggi-do**, H.J.Choi 050415-001 to -003; Cheonmasan, Namyangju-si, **Gyeonggi-do**, H.J.Choi 060418-001 to -005; Cheonmasan, Namyangju-si, **Gyeonggi-do**, H.J.Choi 060422-001 to -009; Jijangbong, Pocheon-si, **Gyeonggi-do**, H.J.Choi 060422-011 to 013 (CBU) / Aengjabong, Gwangju-si, **Gyeonggi-do**, KNAH 014005, 014053; K0409-009, -017; Dongmakgol, Yeoncheon-gun, **Gyeonggi-do**, ParkSH 20308, 20319, 20329, 20330, 20331; Cheongtaesan, Hoengseong-gun, **Gangwon-do**, K.Heo 1519; Gwangneung, Pocheon-si, Gyeonggi-do, 9 Apr 2001, J.Y.Jeong, *s.n.*; Gwangdeoksan, Pocheon-si, Gyeonggi-do, 12 Apr 2002, S.H.Park & S.S.Jung, *s.n.* (KH)

## Acknowledgement

Authors deeply thank to Dr. Dong-Gwang Jo and Dr. You-Mi Lee of Division of Specimens and Genetic Resources, Korea National Arboretum, who loaned us many available specimens of this new plant collected from Gyeonggi-do and Gangwon-do.

This work was supported by the research grant of the Chungbuk National University in 2005.

## Literature cited

- Kim, Y.S. and B.U. Oh. 1987. Three new species of *Corydalis* from Korea. Korean J. Pl. Taxon. 17: 21-28.
- Oh, B.U. 1996. New species of *Corydalis* sect. *Corydalis* from Korea: *C. albipetala* B. Oh. Korean J. Pl. Taxon. 26: 213-217.
- Oh, B.U. 1999. A taxonomic review of Korean *Corydalis* (Fumariaceae). Korean J. Pl. Taxon. 29: 201-230 (in Korean and English).
- Oh, B.U. and C.G. Jang. 2002. *Corydalis hirtipes* B.U.Oh & J.G.Kim: a new species of *Corydalis* sect. *Corydalis* (Fumariaceae) from Korea. J. Plant Biol. 45: 237-239.

Oh, B.U., C.G. Jang and C.Y. Yoon. 2004. *Corydalis namdoensis* B.U. Oh & J.G. Kim: A new species of *Corydalis* sect. *Corydalis* (Fumariaceae) from Korea. Korean J. Pl. Taxon. 34: 265-271.

## 각시현호색: 한국에서 발견된 현호색속 현호색절의 1신종

오 병 운\* · 최 혁 재<sup>1</sup>

(\*충북대학교 생명과학부, <sup>1</sup>국립수목원 생물표본과)

현호색과 현호색속 현호색절의 1신종인 각시현호색이 한국의 경기도 및 강원도에서 발견되어 기재되었다. 신종은 타원형 내지 선형의 소엽 형태, 전연 내지 선단이 약간 치아상인 탁엽 및 넓고 마름모형인 하측 외화관을 가지며, 또한 14개의 돌기가 있는 주두와 종자가 1열로 배열하는 선형의 삭과를 가짐으로써, 이와 가까운 유연관계가 있다고 판단되는 남도현호색과 뚜렷이 구별되었다.

주요어: 현호색과, 현호색속 현호색절, 신종, 각시현호색

---

\*교신저자: 전화; (043) 261-2296, 전송; (043) 271-5787, 전자우편; obutaxon@chungbuk.ac.kr