

3

11

가

가

가

(Ingrowing nail)

6

(Fig.

1B).

3%

(Fig.

1A).

가 가

20%

5

4).

2%

4,9)

(Fig. 2)

20%

(Acral lentiginous

6,7).

melanoma)

(Fig. 3).

가

가



Fig. 1. (A) Preoperative photograph showing dark reddish discoloration of medial side of great toe nail and round dorsomedial discoloration of proximal phalanx skin. (B) Postoperative 6 month photograph following tar-sometatarsal disarticulation showing no evidence of local recurrence of tumor.

7.9)

가 nal linear band-like pigmentation)

가

가 가

가 가

가 58%, 가

86% 가

6).

(longitudi

Levit

ABCDEF rule

2). A Age(, 50~70 가), African American (), Asian(), native American(), B brown to black Band(3 mm), C Change(가), lack of Change(), D Digit involve(> > , Dominant hand), E Extension of pigment(nail fold), F Family or personal history

2).

6).

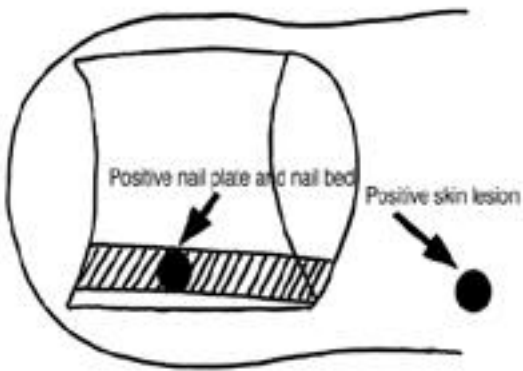


Fig. 2. Diagram showing biopsy sites during operation, one site was obtained from nail bed and the other one from discolored skin.

가,

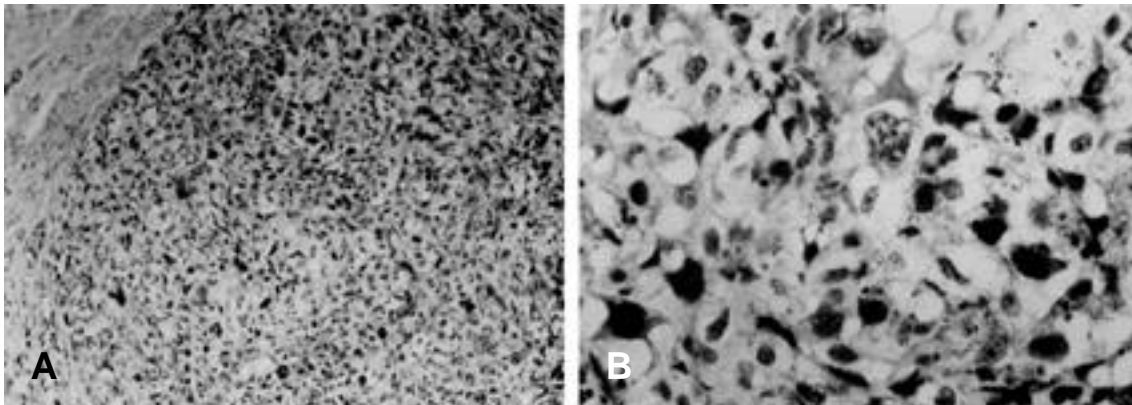


Fig. 3. (A) The tumor cell nest is composed of some epithelioid and spindle-shaped tumor cells. Some amounts of melanin are seen within the tumor cells(H-E stain × 100). (B) The majority of tumor cells are epithelioid. Bizarre giant tumor cells with pleomorphic nuclei and prominent nucleoli are seen(H-E stain × 100).

melanocyte 가
가 가
가 86% 가
가 58% 가

6)

가

7,9)

가가

Clark

가

가

가

가

가 1 mm

가

가

가

1 mm

1 cm

가

1 cm 3

1 mm
cm

가

REFERENCES

가

- 1) **Clarkson JHW, McAllister RMR, Cliff SH and Powell B:** Subungual melanoma in situ: two independent streaks in one nail bed. *Br J Plastic Surgery*, 165-167, 2002.
- 2) **Eevit EK, Kagen MH, Scher RK, Grossman M and Altman E:** The ABC rule for clinical detection of subungual melanoma. *J Am Acad Dermatol*, 42(2):269-274, 2000.
- 3) **Kang HJ, Bae ID, Hahn SB and Kang ES:** Subungual malignant Melanoma of hand (case repor). *J Korean Soc Surg Hand*, 4(2): 309-313, 1999.
- 4) **Lang PG Jr:** Malignant melanoma. *Med Clin North Am*, 82: 1325-1358, 1998.
- 5) **Lee JM and Chang KY:** Reconstruction of the

가 1 mm
(sentinel node)

13

가

13

- thumb in malignant melanoma - A case of long term follow up. *J Korean Soc Surg Hand*, 3(2): 315-319, 1998.
- 6) **Mohrle M and Hafner HM**: Is subungual melanoma related to trauma? *Dermatology*, 204(4): 259-261, 2002.
- 7) **O'Leary JA, Berend KR, Johnson JL, Levin LS and Seigler HF**: Subungual melanoma: a review of 93 cases with identification of prognostic variables. *Clin Orthop Relat Res*, 378: 206-212, 2000.
- 8) **Rhee SK, Kang YK, Park WJ, Chung YG and Lee HJ**: Malignant melanoma. *J of Korean Bone & Joint Tumor Soc*, 7(1):13-19, 2001.
- 9) **Shukla VK and Hughes LE**: Differential diagnosis of subungual melanoma from a surgical point of view. *Br J Surg*, 76: 1156-1160, 1989.
- 10) **Quinn MiJ, Thompson JE, Crotty K, McCarthy WH and Coates AS**: Subungual melanoma of the hand. *J hand surg*, 21A: 506-511, 1996.

Abstract

Subungual Malignant Melanoma of Greater Toe - Case Report -

Byung Cheol Kim, M.D., Chul Yong Jung, M.D., Sung Jong Choi, M.D.

Department of Orthopaedic Surgery, Pusan Medical Center, Pusan, Korea

Malignant melanoma commonly occurs in skin and the incidences are uncommon. Especially, the incidences of subungual melanoma is less than 2% of total numbers of melanoma, and most of the cases tended to be misdiagnosed at first time. Thus, the prognoses are not good. We are going to report our experiences of subungual melanoma and diagnostic criteria in great toe initially misdiagnosed as ingrowing nail with a review of the literature.

Key Words: Subungual melanoma, Diagnostic criteria

Address reprint requests to

Chul Yong Jung, M.D.
Department of Orthopaedic Surgery, Pusan Medical Center,
1330, KeoJe-Dong, Yeonje-gu, Pusan, 611-072, Korea
TEL: 82-51-607-2861, Fax: 82-51-507-3001, E-mail: chcy0707@hanmail.net