

A Case of Focal Myoclonus in Primary Motor Cortex Infarction

Min-Jeong Kim, M.D., Bong-Goo Yoo, M.D., Kwang-Soo Kim, M.D.

Department of Neurology, Kosin University College of Medicine, Busan, Korea

Myoclonus may originate from the cerebral cortex, subcortical structures, brainstem, spinal cord or peripheral nerve. But unilateral upper limb myoclonus related to cortical infarct is an unusual clinical picture. We report a 67-year-old man presented with myoclonus, associated with primary motor cortex infarction.

Key Words: Cortical infarct, Myoclonus

(Fig. 1). 2

가

가

valproic acid

4 가

67 가

10

45

160/90 mmHg

20 / , 60 / , 36.5°C

Medical Research Council (MRC) scale IV

T2

(central sulcus)

(myoclonus)

2-4

가

Address for correspondence
Min-Jeong Kim, M.D.
 Department of Neurology, Kosin University College of Medicine
 34 Amnam-dong, Seo-gu, Busan, 602-702, Korea
 Tel: +82-51-990-6461 Fax: +82-51-990-3077
 E-mail: merritt329@hanmail.net

5

(corticome

tor neuron pathway)

가

(startle),
(reticular myoclonus)

(juvenile myoclonic epilepsy),
(encephalitis),
(corticobasal ganglion-
ic degeneration)

(segmental) (propriospinal)

2,7

가

3,4,6

가
가
가

가
가

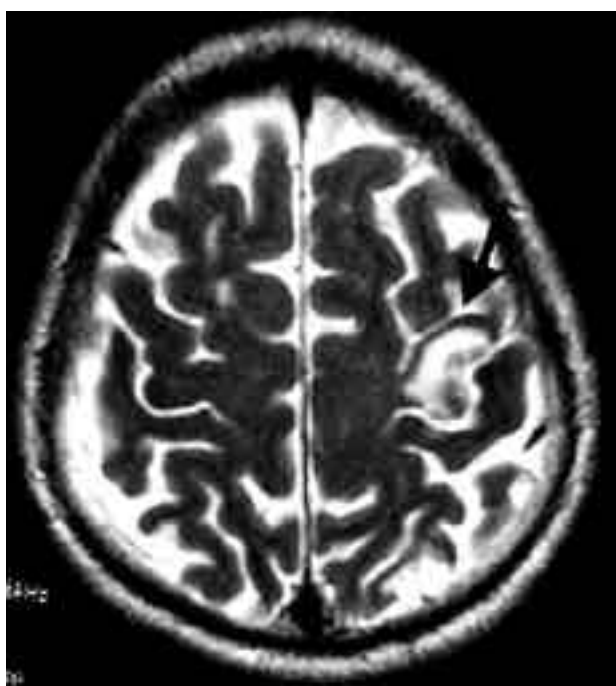


Figure 1. MRI of the patients. T2-weighted image shows high signal intensity in the left precentral gyrus.

REFERENCES

1. Caplan LR, Bogousslavsky J. Stroke Syndromes. 2nd ed. New York, NY: Cambridge University Press 2001;162-181.
2. Jankovic JJ, Tolosa E. Parkinson's Disease and Movement disorder. 4th ed. Philadelphia: Williams & Wilkins 2002; 291-300.
3. Mima T, Nagamine T, Nishitani N, et al. Cortical myoclonus: Sensorymotor Hyperexcitability. Neurology 1998;50(4):933-942.
4. Moon SY, Kim BJ, Kim GM, Seo DW, Hong SB, Lee WY. Propriospinal Myoclonus: Clinical and Neurophysiologic Characteristics. J Korean Neurol Assoc 2003;21(1):82-88.
5. Agarwar P, Frucht SJ. Myoclonus. Curr Opin Neurol 2003;16:515-521.
6. Nighoghossian N, Trouillas P, Vial C, Froment JC. Unilateral Upper limb Asterixis Related to Primary Motor Cortex Infarction. Stroke 1995;26(2):326-328.
7. Kwon HM, Lee YS, Ko SB, Park SH. A Case of Time-locked Periodic Myoclonus in Pontine Infarction. J Korean Neurol Assoc 2003;21(1):109-110.