

-

* . .

— Abstract —

Open Scapulothoracic Dissociation - Case report -

Jun-Gyu Moon, M.D.*, Sung Woo Seo, M.D., Hyo-Sub Jung, M.D.

Department of Orthopedic Surgery, Korea University Guro Hospital, Seoul, Korea

Traumatic scapulothoracic dissociation is a rare upper extremity injury caused by massive traction or blunt trauma. Most cases are associated with a large spectrum of concomitant injuries, including severe musculoskeletal injuries and neurovascular injuries around the shoulder. But, it occurs without damaging overlying skin as a closed injury rather than an open injury. We present a case of open scapulothoracic dissociation and describe clinical features with literature review.

Key Words: Scapulothoracic Dissociation, Open.

2,7,10)

1-10)

가

가 5)

가

: *

80

Tel: 02) 818-6059, Fax: 02) 863-4605, E-Mail: orthocap@yahoo.co.kr

11

27 가
20 cm
30x30 cm
(Fig. 1).

가
(preganglionic injury)

5/6 6/7
가 (pseudomeningocele)
(Fig. 3).

13 가

(Fig. 4). 4 6
2

110/60, 88 , 22
g/dl 16.8

5 3
5 1
(Panbrachial plexus injury)

가
67 mm
84 mm

(Fig. 2).



Fig. 1. The clinical photo shows an open wound on the axilla and an exposure of the neurovascular structures.

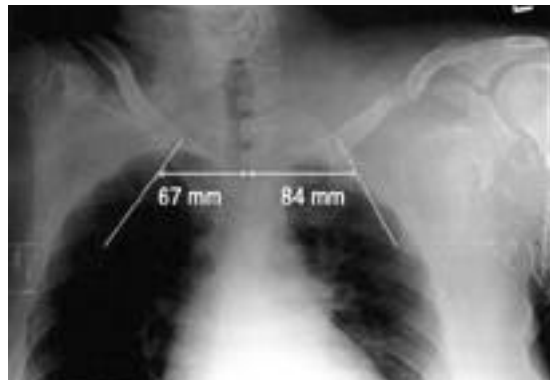


Fig. 2. The chest radiogram shows the lateral displacement of the medial border of left scapular compared with that of the right side and the associated injury with the fractures of the clavicle and the scapular neck.

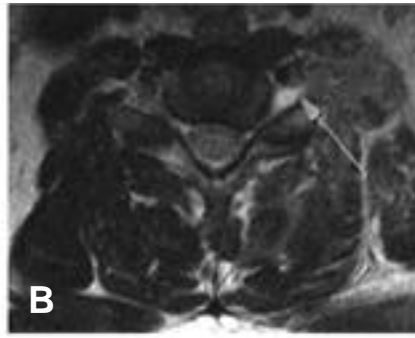
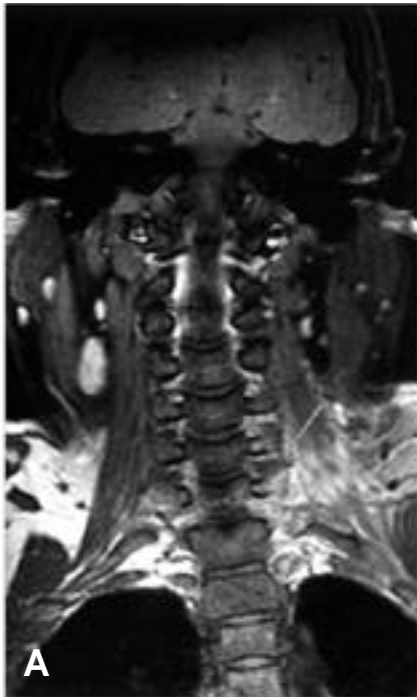


Fig. 3. The coronal (A) and axial (B) MRI reveals the pseudomeningocele formation in left C5/6 and C6/7 neural foramen and extraforaminal zones.



Fig. 4. Postoperative radiogram showing the reduction of the clavicle and acromioclavicular joint. But there is still lateral displacement of left scapula.

가

가

1-10)

가

. 1984

Oreck ⁹⁾

, Althausen ²⁾

1 cm

Damschen ³⁾

54

4

REFERENCES

1. : , , , , , : , 1:123-127,1998.
2. **Althausen PL, Lee MA, and Finkemeier CG:** Scapulothoracic dissociation: diagnosis and treatment. *Clin Orthop*, 416:237-244, 2003.
3. **Damschen DD, Cogbill TH, and Siegel MJ:** Scapulothoracic dissociation caused by blunt trauma. *J Trauma*, 42:537-540, 1997.
4. **Ebraheim NA, Pearlstein SR, Savolaine ER , Gordon SL, Jackson W and Corray T:** Scapulothoracic dissociation (closed avulsion of the scapula, subclavian artery, and brachial plexus): a newly recognized variant, a new classification and a review of the literature and treatment options. *J Orthop Trauma*, 1:18-23, 1987.
5. **Fischer PJ and Kent RB:** Open scapulothoracic dissociation. *South Med J*, 94:383-386, 2001.
6. **Goldstein LJ and Watson JM:** Traumatic scapulothoracic dissociation: case report and literature review. *J Trauma*, 48:533-535, 2000.
7. **Masmejean EH, Asfazadourian H, and Alnot JY:** Brachial plexus injuries in scapulothoracic dissociation. *J Hand Surg*, 25-B:336-340, 2000.
8. **Oni OO, Hoskinson J, and McPherson S.:** Closed traumatic scapulothoracic dissociation. *Injury*, 23:138-139, 1992.
9. **Oreck SL, Burgess A, and Levine AM:** Traumatic lateral displacement of the scapula: a radiographic sign of neurovascular disruption. *J Bone Joint Surg*, 66-A:758-763, 1984.
10. **Zelle BA, Pape HC, Gerich TG, et al.:** Functional outcome following scapulothoracic dissociation. *J Bone Joint Surg*, 86-A:2-8, 2004.