



(typhoid fever) (Salmonella typhi)
 가 . 1~2
 40 1 가
 1~2 가 . 가
 ,
 가 가 .
 . 가

가

(Fowl Typhoid)

1. (Causative agent)
 (Family) : (Enterobacteriaceae)
 (Genus) : (Salmonella)
 (Gram negative), (non motile rod)
 (No capsule)
 (Not spore forming)
 가 (Fowl typhoid)
 Salmonella gallinarum
2. 가 (Fowl typhoid Geographical distribution)
3. (Disease forms)

(acute, epidemic)	(chronic, endemic)
(high mortality)	(sporadic mortality)
(depressed production)	(depressed production)
(any age)	12 (birds > 12 weeks)
4. (Clinical symptoms)
 - 가. (Young birds)
 - . (moribund or dead chicks at hatch)
 - . (somnolence)
 - . (poor growth)

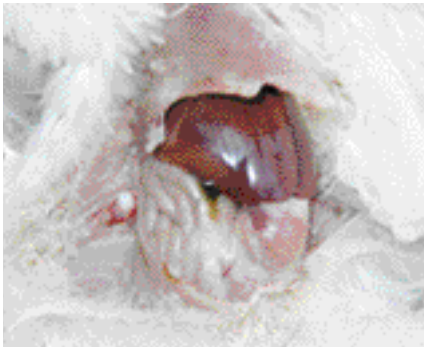
- (no appetite)
- (whitish material at the vent)
- (Growing and mature fowl)
- (sudden death)
- (sudden drop in feed consumption)
- (droopy and ruffled chickens)
- (pale heads)
- (shrunken combs)
- 가 (increased body temperature)
- (Gross lesions)
- , , (Swelling and redness of liver, spleen, kidneys)
- (Ovarian degeneration)
- (Pericarditis)
- (Peritonitis from ruptured ova)
- (Greenish brown or bronze swollen livers)

5. (Hosts)

- (chicken)
- (turkeys)
- guinea fowl
- pea fowl
- ducklings
- game birds

6. Fowl typhoid clinical signs.





7. (Susceptibility)

가.

가

(heavy breeds are more susceptible than lighter breeds)

(Incubation period)

4 ~ 5 (4 ~ 5 days depending on the virulence of the organism). 2 ~ 3

(losses may extend over 2 ~ 3 weeks).

가 (tendency for recurrence)

(Morbidity and mortality)

10% 90% (variable from 10% up to 90%)

(Transmission)

(Vertical) / (Horizontal) -

(Infectivity)

S. gallinarum .(S.

gallinarum is very resistant in the environment e.g.),

(Litter):11 , (Cloth):228 ,

(Plastic):93, (Static water):5

(Diagnosis)

(Isolation from visceral organs), (Identification),

(Serology), (Clinical picture), (Flock history)

(Treatment)

(Various sulfonamides esp. sulfaquinoxaline),

(Streptomycin), (Chlortetracyclin),

(Amoxycillin), (Enrofloxacin)

(Prevention and Control)

(Eradication), (control by hygiene and

sanitation), (Management programmes), (Vaccination)

가

가

?

2004 7 ,8

가

가

?

?

18-19

가

가

4

가

가

%

%

가

가

(1

10

)가

12-13

가

가

가

.4

1.5

가

1

가

4

가 15%가

?

200

가

가

100%

가

가가

()