

Original Articles

Cytotoxic effects of ethanol extracts of *Saussurea lappa* mediated by mitochondrial apoptotic pathway

Seung-Hee Koh¹⁾, Seong-Gyu Ko^{2,3)}, Chan-Yong Jun¹⁾, Chong-Hyeong Park¹⁾

Department of Internal Medicine¹⁾, College of Oriental Medicine, Kyungwon University
Department of Tumor Biology, Cancer Research Institute, College of Medicine, Seoul National University²⁾
Department of Internal Medicine, College of Oriental Medicine, Sangji University³⁾

Saussurea lappa and *Taraxacum mongolicum* have been used for herbal medicinal treatments against cancers in East Asia. We performed this study to understand the molecular basis underlying the anti-tumor effects of two herbs and analyzed the effects of these medicinal herbs on proliferation and on expression of cell growth/apoptosis related molecules by using an AGS gastric cancer cell line. The treatments of *Saussurea lappa* dramatically reduced cell viabilities in a dose and time-dependent manner, but *Taraxacum mongolicum* did not. FACS analysis and Annexin V staining assay also showed that *Saussurea lappa* induces apoptotic cell death of AGS. Expression analyses via RT-PCR and Western blots revealed that *Saussurea lappa* increased expression of the p53 and its downstream effector p21^{waf1}, and that the both increased expression of apoptosis related Bax and cleavage of active caspase-3 protein. We also confirmed the translocation of Bax to mitochondria. Collectively, our data demonstrate that *Saussurea lappa* induces growth inhibition and apoptosis of human gastric cancer cells, and these effects are correlated with down- and up-regulation of growth-regulating apoptotic and tumor suppressor genes, respectively.

Key Words: *Saussurea lappa*, mitochondrial pathway, apoptosis, anti-tumor effect, Bax, medicinal herbs.

Introduction

Saussurea lappa and *Taraxacum mongolicum* are representative anticancer medicinal herbs that have been traditionally used for cancer treatments in China, Japan and Korea. Previous studies also demonstrated that *Saussurea lappa* exhibits anti-tumor and anti-ulcer activity as well as anti-inflammatory effects via down-

regulation of tumor necrosis factor- α ¹⁻⁵⁾. *Taraxacum mongolicum* has been widely used to treat for cancers and liver diseases and has been reported to carry immune suppressive effects⁶⁻⁷⁾.

It is well known that tumor development is accelerated by disruption of the balance between cell proliferation and cell death, which is maintained through regulations of various signal transduction pathways⁸⁻⁹⁾. Active cell death, known as apoptosis or programmed cell death, is caused by various physiologic and non-physiological cell injuries including DNA damage. It has been demonstrated that various cell proliferation- and apoptosis-signal transduction path

Received 20 October 2004; received in revised form 25 October 2004; accepted 30 October 2004

Correspondent to : Chan-Yong Jun, Department of Internal Medicine, College of Oriental Medicine, Kyungwon University Yong-dong, Chung-gu, Incheon, Korea
Tel : 82-32-764-9011, E-mail : joncy@kyungwon.ac.kr

ways are built on complicated networks between oncogenes and tumor suppressor genes such as p53 and its downstream factor, p21¹⁰⁻¹⁴. For example, transcription and translation of anti-apoptotic Bcl-2 and pro-apoptotic Bax are down- and up-regulated by p53, respectively¹².

p53 controls various genetic expressions and plays an important role in cell proliferation and in modulation of signal transduction pathways. Accumulation of p53 in cells after DNA damage leads to cell cycle arrest and apoptosis induction. In addition, p53 is involved in repair of damaged DNA and thus prevents accumulation of mutations and suppresses tumor development^{15,16}.

In our study, we analyzed effects of *Saussurea lappa* and *Taraxacum mongolicum* on proliferation and apoptosis of a human gastric cancer cell line AGS. Here we demonstrated first that *Saussurea lappa* induced growth inhibition and apoptosis of AGS cells and these effects are correlated with down- and up-regulation of growth-regulating proapoptotic and tumor suppressor genes, respectively, suggesting that the anticancer effects of *Saussurea lappa* might be associated with their regulatory capabilities of tumor-related genes expressions.

Materials and methods

1. Cell culture

The AGS human gastric carcinoma cell line was obtained from American Type Culture Collection (ATCC, Rockville, MD) and grown in RPMI 1640 (Life Technologies, Inc., Rockville, MD) containing 10% FBS (Hyclone Laboratories, Inc., Logan, UT) and 1% gentamicin in a 5% CO₂ humidified atmosphere. Subconfluent monolayers of cells were employed in all experiments.

2. Preparation of medicinal herbs

The raw herbs were purchased from Omni-herb Inc. (Seoul, Korea) and extracted [*Saussurea lappa* (560g), and *Taraxacum mongolicum* (570g)] by sonication of dried roots of these plants in 80% ethanol, following by a freeze-drying process of the ethanol extract. Freeze dried powder forms of the extracts [*Saussurea lappa* (115.4g), and *Taraxacum mongolicum* (71.9g)] were dissolved in RPMI 1640 medium (Life Technologies, Inc.) to 10 mg/ml, vortexed at room temperature for 1 min, and incubated at 37° C for 1 hr while rotating before use. These solutions were centrifuged at 12,000 rpm for 5 min to remove any insoluble ingredients. The supernatant was passed through a 0.22- μ m filter for sterilization and diluted with RPMI 1640 culture medium to final concentrations of 6.25~1,000 μ g/ml.

3. Growth inhibition assay

To determine the inhibition effect of these four herbal extracts on proliferation of AGS cells, the percentage of growth inhibition was determined by measuring MTT dye absorbance of viable cells in the absence or presence of medicinal herb extracts. Ten thousand cells per well were seeded onto a well of 96-well plates (Nunc, Roskilde, Denmark) for 24 hr, treated with various concentrations of these extracts, and incubated for 3 days at 37° C. Subsequently, 50 μ l of MTT (Sigma) at a concentration of 2 mg/ml was added to each well, and cells were incubated for an additional 4 hr at 37° C. The supernatant was aspirated, and 150 μ l of DMSO were then added to the wells to dissolve any precipitate present. The absorbance was then measured at a wavelength of 570 nm using an ELX800 microplate reader (Bio-Tek Instruments, Inc., Winooski, VT). The IC₅₀'s were calculated assuming the survival rate of untreated cells to be 100%. To examine the time-dependent inhibition effects, cells were treated with *Saussurea lappa* which has shown cytotoxic effects at

various times, and cell viability was measured by a Trypan blue exclusion assay. To evaluate how much these herbal medicines have cytotoxic effects on cancer cells as compared with normal epithelial cell line, AGS and RIE1 cells, from rat intestine, were seeded to wells of 96 well plates in the presence of normal culture media at 1.0×10^4 cells/well. Twenty-four hours later, cells were treated with indicated concentrations of *Saussurea lappa* extracts for additional 72 hrs. Then MTT assay was performed as explained in Material and methods. Data shown is representative from three independent experiments, in which each condition was in triplicate. Data were shown in mean \pm standard deviation (SD).

4. Flow cytometric cell cycle or DNA content analysis

A total of 5×10^5 cells were seeded in 60mm dishes and incubated for 24 hr at 37°C. *Saussurea lappa* extracts at indicated various concentrations was directly added to the dishes and incubated for an additional 12, 24, 48 hr. During harvests, both cells detached (probably apoptotic) and adherent were combined, fixed by addition of 4ml 70% ethanol, and stored at -20°C at least 30min. Cells were then pelleted, washed twice with ice-cold PBS, incubated in PBS containing 10 ug/ml of RNase A (Sigma) for 15 min at 37°C, and stained with 10 ug/ml of propidium iodide (PI). The relative DNA content per cell of samples was obtained by measuring the fluorescence of PI that bound stoichiometrically to DNA. The cell cycle was analyzed using a FACSCalibur flow cytometer (Becton Dickinson, San Jose, CA) and a ModFit LT V2.0 computer program.

5. Apoptosis assay

To evaluate the apoptotic cell death, annexin V staining was carried out using an annexin V assay kit

(PharMingen) according to the manufacture's recommendations. In brief, both floating and adherent cells were collected. Prepared cells were washed twice with ice-cold PBS and then re-suspended in binding buffer (10 mM HEPES/NaOH, pH 7.4, 140 mM NaCl, 2.5 mM CaCl₂). Both 5 ul of annexin V-FITC and 10 ul of 20 ug/ml PI were then added to these cells, which were later analyzed with a FACSCalibur flow cytometry (Becton Dickinson, San Jose, CA).

6. DNA fragmentation assay

Cells were collected, washed with PBS twice and then lysed in 100 ul of lysis buffer (50 mM Tris (PH 8.0), 10 mM EDTA, 0.5% sodium lauryl sarkosinate and 1 mg/ml protease K) for 3hr at 56°C and treated with 0.5 mg/ml Rnase A for an additional 1 hr at 56°C. DNA was extracted by the phenol/chloroform/isoamyl alcohol (25/24/1) method before loading. Loading buffer (50 mM Tris, 10 mM EDTA, 1% (w/v) low melting point agarose, 0.25% (w/v) bromophenol blue) and samples were loaded onto a presolidified, 2% (w/v) agarose gel containing 0.1 ug/ml ethidium bromide. Agarose gels were electrophoresed at 50 V for 90 minutes in TBE buffer. Gels were observed and photographed under ultraviolet light.

7. Quantitative RT-PCR analysis of gene expression

Total cellular RNA was extracted from cultured cells by a single-step method. One ug of extracted RNA was reverse-transcribed to cDNA in a 20 ul reaction using MoMuLV (Gibco) and random hexamer primers. Two separate cDNAs were prepared from each RNA and diluted 1:4 or 1:8 with distilled, sterile H₂O prior to PCR. For quantitative evaluation of gene expression, we initially performed PCR with exon-specific primer sets for all targets including a housekeeping standard GAPDH. The sequences of oligonucleotide primers will

be provided upon request. PCR was performed with increasing cycle numbers (21, 24, 27, 30, 33, 36, 39, and 42 cycles) and diluted cDNAs (1:0, 1:2, 1:4, and 1:8). Each cycle comprised denaturation at 95°C for 1 min, annealing at 58-62°C for 1 min, and polymerization at 72°C for 1 min. Ten μ l of the PCR products were resolved on 2% agarose gels (FMC, Rockland, ME). Quantitative analysis of gene expression was confirmed through scanning of ethidium bromide-stained gels, using a laser densitometry. Measurement of signal intensity was performed using the Molecular Analyst program (version 2.0) on an IBM compatible computer.

8. Western blot analysis

AGS cells in 100 mm dishes were treated with or without *Saussurea lappa* extracts for indicated periods. After incubation, cells were washed with ice-cold PBS and lysates were prepared using a lysis buffer containing 20 mM Tris-Cl (pH 7.4), 100 mM NaCl, 1% NP40, 0.5% sodium deoxycholate, 5 mM MgCl₂, 0.1 mM phenylmethylsulfonyl fluoride, 0.1 mM pepstatin A, 0.1 mM antipain, 0.1 mM chymostatin, 0.2 mM leupeptin, 10 μ g/ml aprotinin, 0.5 mg/ml soybean trypsin inhibitor, and 1 mM benzamidine. After incubation of the lysates on ice for 30 min, whole cell extracts were cleared by a centrifugation at 13,000 rpm for 20 min. Twenty μ g of protein were fractionated by SDS-PAGE denaturing gels and transferred onto a nitrocellulose membrane. The membrane was blocked for 1 hr in the 20 mM Tris-buffered saline (TBS) buffer containing 5% skim milk and 0.1% Tween 20 and then probed with specific antibodies for indicated molecules. The protein was detected using chemiluminescence method (Amersham Pharmacia Biotech) followed by autoradiography.

9. Subcellular fractionation

Cells were lysed in isotonic mitochondrial buffer in mitochondria lysis buffer (210 mM sucrose, 70 mM mannitol, 10 mM Hepes, pH 7.4, 1 mM EDTA) containing 1 mM phenylmethylsulfonyl fluoride, 5 μ g/ml leupeptin, 5 μ g/ml aprotinin, and 0.7 μ g/ml pepstatin. After homogenization with a Dounce homogenizer, cell lysates were centrifuged at 1,000 \times g for 10 min to discard nuclei and unbroken cells. The post-nuclear supernatant was centrifuged at 10,000 \times g for 15 min to pellet mitochondria-enriched heavy membrane fraction, and the resulting supernatant was further centrifuged at 100,000 \times g for 30 min to obtain cytosolic fraction. The membrane fractions were re-suspended in Triton X-100 lysis buffer containing protease inhibitors. Protein concentration was determined by BCA assay (Pierce Chemical, Rockford, IL) and total proteins (50 μ g) from each fraction were subjected to immunoblot analysis.

10. Data analysis

Results shown are representative of at least three independent experiments performed in triplicate and are presented as the means \pm standard deviation (SD).

Results

1. Growth inhibition of AGS gastric cancer cells by *Saussurea lappa*, and *Taraxacum mongolicum*

To determine treatment concentrations, we initially examined effects of two medicinal herbs on cell viability using MTT assay. The growth inhibition of AGS by the *Saussurea lappa*, and *Taraxacum mongolicum* extracts were determined by quantifying viable cells in the absence or presence of treatment of each herbal extract at various concentrations for 3 days. As shown in figure 1A, only *Saussurea lappa* extracts significantly decreased cell viability in a dose-

dependent manner. Based on the growth inhibition curves, the concentration of *Saussurea lappa* extracts required for 50% inhibition of growth (IC_{50}) for AGS cells was about 100 $\mu\text{g/ml}$. The maximal inhibition of cell growth (>80%) was achieved at 200 $\mu\text{g/ml}$ in AGS cells. A time-dependent growth inhibition of AGS cells by *Saussurea lappa* extracts were also observed at the various times, and maximal growth inhibitions were shown within 4 days in *Saussurea lappa* extracts after the treatments (Fig 1B). Meanwhile, the parallel

treatment of the extracts to a normal epithelial cell line from rat intestine (RIE1) showed much less strong effects on inhibition of viability (with an IC_{50} at about 500 $\mu\text{g/ml}$, respectively, Figure 1C). Therefore, *Saussurea lappa* extracts could induce growth inhibition of gastric cancer cells such as AGS cells.

2. Cell cycle analysis of *Saussurea lappa*

Based on the results from the preliminary study, two medicinal cytotoxic herb, *Saussurea lappa* extracts was

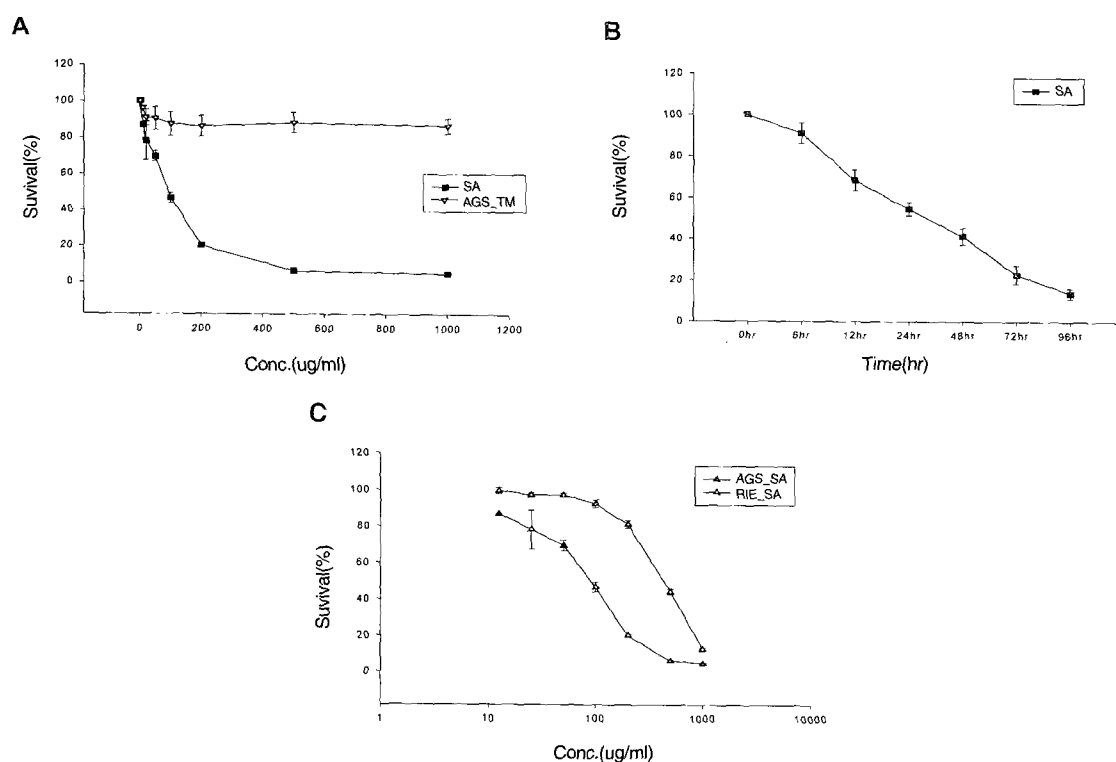


Fig. 1. Medicinal herb-mediated inhibition of cell viability in gastric AGS cells

(A) Inhibition of cellular growth by four medicinal herbs in a dose-dependent manner. AGS cells seeded to wells of 96 well plates in the presence of normal serum containing media at 1.0×10^4 cells/well. Twenty-four hours later, cells were treated with indicated concentrations of four medicinal herbal extracts for further 72 hrs. Then MTT assay was performed as explained in Material and methods. (B) Inhibition of cellular growth by four medicinal herbs in a time-dependent manner. AGS cells seeded to 60 mm culture dishes in the presence of normal serum containing media at 5×10^5 cells/dish. Twenty-four hours later, cells were treated with 100 $\mu\text{g/ml}$ of *Saussurea lappa* extracts for the indicated time. Then Trypan blue exclusion assay was performed and viable cell counted. (C) Inhibition of AGS cell growth by the *Saussurea lappa* extracts. AGS or RIE1 cells were seeded to wells of 96 well plates in the presence of normal culture media at 1.0×10^4 cells/well. Twenty-four hours later, cells were treated with indicated concentrations of *Saussurea lappa* extracts for additional 72 hrs. Then MTT assay was performed as explained in Material and methods. Data shown is representative from three independent experiments. SA, *Saussurea lappa*; TM, *Taraxacum mongolicum*.

chosen to examine their cytotoxic effects. To further characterize whether these herbs affect apoptotic population after the treatments, cells were treated with 100 ug/ml concentrations, respectively, for 12 to 48 hours, before flow cytometry analyses. While no detectable changes in cell cycle distribution were observed until 48 hours after treatment, significant increases of cell population with subG1 DNA content, as time passed after treatment of *Saussurea lappa* and extracts were found at 24, and 48 hours (Fig. 2A and 2B). However, cells in control condition showed no significant apoptotic population.

3. Annexin V staining assay and DNA fragmentation assay of *Saussurea lappa*

Next we tried to determine if *Saussurea lappa* extracts induced apoptotic cell death of AGS cells. As shown in figure 2A and 2B, untreated cells did not show any significant apoptosis, whereas cells were becoming rapidly apoptotic with time after treatment with the extract. In addition to flow cytometric cell cycle analysis, we performed another approach to detect apoptotic cells using annexin V staining. In this assay, *Saussurea lappa* extracts showed apoptotic populations of about 13.75% and 17.15%, respectively, when cells

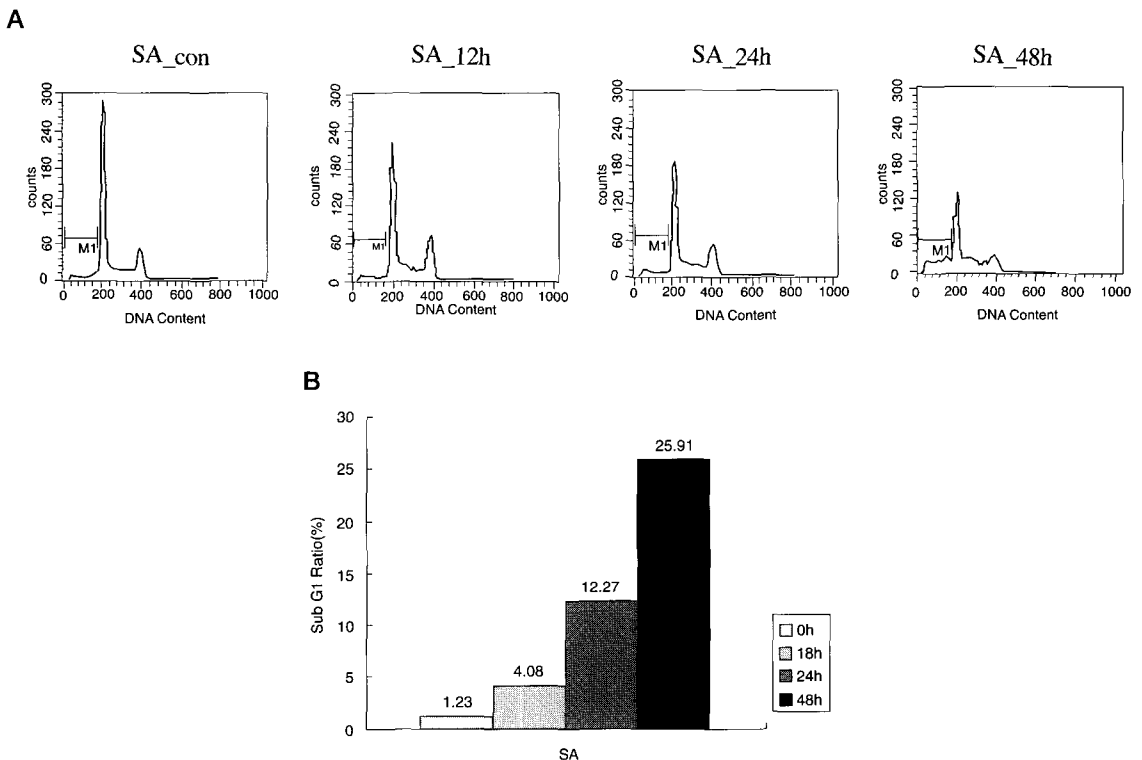


Fig. 2. Treatment of *Saussurea lappa* extracts induced apoptosis

(A) *Saussurea lappa* extracts induced apoptosis. Cells in 60 mm culture dishes were treated with *Saussurea lappa* extracts at 100 ug/ml for indicated periods. The treatments were done by a direct addition of *Saussurea lappa* extracts solution into culture media. The solution was made of RPMI1640 culture media as explained in the Materials and methods. After incubation, cells floating and adherent were harvested and combined before PI staining and flow cytometric analysis for subG1 population and cell cycle as explained in the materials and methods. (B) Apoptotic population by the treatments of *Saussurea lappa* were shown with histogram.

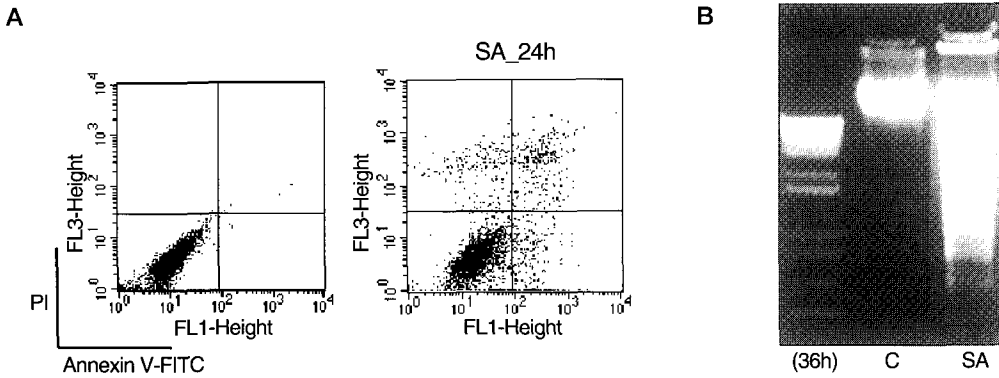


Fig. 3. The externalization of phosphatidylserine during *Saussurea lappa* - induced apoptosis

(A) Annexin V staining combined with PI staining was performed in control cells (left histogram) and cells treated with 100 µg/ml of *Saussurea lappa* extracts for the 24 hr and then analyzed by flow cytometry. Early apoptotic cells were localized in the lower right quadrant of a dot-plot graph using Annexin V FITC versus PI. (B) DNA fragmentation assay was examined to confirm of late apoptotic change of nuclei after treatment of *Saussurea lappa* extracts, 100 µg/ml for 36 hr.

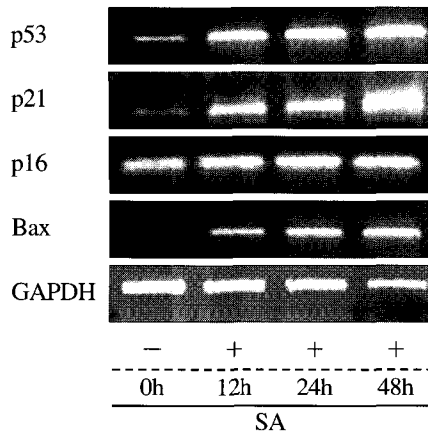


Fig. 4. semi-quantitative RT-PCR analysis for cell cycle- and apoptosis-related gene expression

One µg of total cellular RNA extracted from untreated and treated AGS cells was converted to cDNA by reverse transcription and 1:4 diluted cDNA was subjected to PCR amplification of p53, p21^{Waf1}, p16^{Ink4A}, Bax and an internal control gene, GAPDH. Ten µl of PCR products was resolved on a 2% agarose gel and its band intensities were scanned using a densitometry.

were treated with 100 µg/ml *Saussurea lappa* extracts for 24 h. To demonstrate apoptotic cell death by *Saussurea lappa* extracts, we also examined DNA fragmentation assay, and in this study, we got the evidence of DNA fragmentation of morphological changes of nuclei in AGS gastric cells.

4. Transcriptional up-regulation of the tumor suppressor genes p53 and p21^{Waf1} expression

We next examined, using semi-quantitative RT-PCR assay, the possibility that growth inhibition and apoptosis induction by *Saussurea lappa* was associated with their regulatory effects on the cell cycle- and

apoptosis-controlling genes expressions. As shown in Fig. 4, treatment of *Saussurea lappa* resulted in increase of transcription of the p53 tumor suppressor gene and its downstream effector p21^{Waf1} at 48 hours after the treatment. In contrast to *Saussurea lappa* also showed a strong growth arrest and apoptosis induction activity, but did not increase p53 and p21^{Waf1} expression. We also analyzed mRNA expression of p16^{Ink4A}, another tumor suppressor gene, which also plays a critical role in regulation of cell cycle progression and apoptosis, but its expression was not modulated by any of the two herbal medicines tested. Next, we examined expression of representative anti-apoptotic genes, such as Bcl-2 and Bcl-X_L, and a pro-apoptotic gene Bax. Whereas no effects on Bcl-2 and Bcl- X_L expression were observed,

Saussurea lappa showed a strong stimulating effect on Bax gene expression. Induction of the Bax gene transcription by *Saussurea lappa* was dependent on the treatment time. A representative example of gene expression analysis was shown in Fig. 4.

5. Western Blot analysis

Based on the apoptotic analysis by determination of cells with subG1 DNA contents and RT-PCR analysis on cell cycle arrest- and apoptosis-related genes transcriptions, we have then examined expression levels of cell apoptotic molecules. In this analysis, we have confirmed intracellular apoptotic events biochemically, by examining the expression levels of pro-apoptotic molecules such as active caspase 3, and Bax, and an

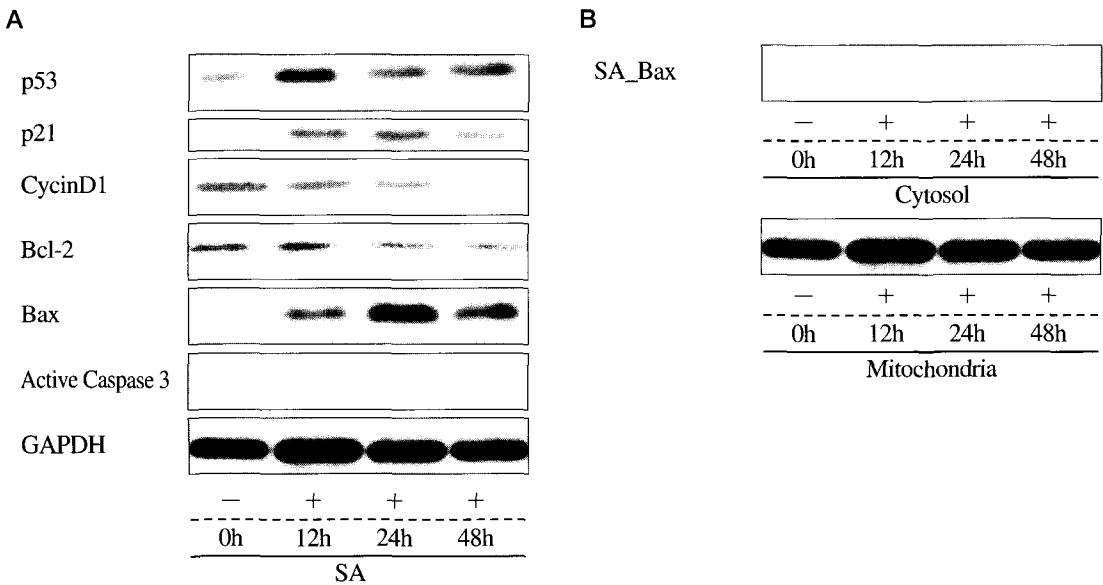


Fig. 5. Treatment of *Saussurea lappa* extracts regulates apoptotic related and cell cycle related expression levels

(A) Cells in 100 mm culture dishes were treated with *Saussurea lappa* extracts at 100 μ g/ml for indicated periods. After treatment, cells were washed twice with ice-cold PBS and then lysates were prepared using a RIPA lysis buffer. Lysates normalized to have equal protein amounts were used immunoblots by SDS-PAGE using primary antibodies against indicated molecules, as described in the Materials and methods. (B) Cells were lysed in isotonic mitochondrial buffer in mitochondria lysis buffer containing protease inhibitor. After homogenization, cell lysates were centrifuged at 1,000 \times g. The postnuclear supernatant was centrifuged at 10,000 \times g and the resulting supernatant was further centrifuged at 100,000 \times g to obtain cytosolic fraction. The membrane fractions were re-suspended in Triton X-100 lysis buffer containing protease inhibitors. Total proteins (50 μ g) from each fraction were subjected to immunoblot analysis.

anti-apoptotic molecule of Bcl₂. Cell lysates were prepared at various time points after treatment of *Saussurea lappa* extracts, and used for Western blots. As shown in the figure 5, the level of anti-apoptotic Bcl₂ was not altered significantly by the both herbal extract treatments, but the expression of pro-apoptotic Bax increased gradually with the treatment. Inductions of p53 and its downstream targets including Bax and p21^{waf1} were obvious in case of treatment of *Saussurea lappa*, indicating that the apoptotic effects of the extract might involve p53 action to induce Bax (leading to apoptosis) and p21^{waf1}, and furthermore activation of caspase 3, appeared to be involved (Figure 5A). It is well known that apoptotic stimuli trigger Bax translocation to mitochondria where active Bax causes subsequent activation of certain downstream effector caspases 3 and its substrate PARP cleavage. To examine Bax activation in response to *Saussurea lappa* extracts treatment, we performed subcellular fragmentation assay that recognizes the translocation of Bax protein. In this subcellular fractionation /immunoblot analysis confirmed Bax translocation to mitochondria in AGS cells treated with *Saussurea lappa* extracts (Fig. 5B).

Taken together, apoptosis by the treatments of *Saussurea lappa* might be caused by their abilities in regulations of expression levels of growth arrest and apoptosis-related genes.

Discussion

Conventional medicines have usually been sorted to a number of treatments such as operation, radiotherapy, and chemotherapy. The existing anti-cancer agents, designed to eradicate cancer cells, have strong toxicities, which lead to harmful side effects. Recently, a number of researches on natural products have been actively carried out in efforts to develop new treatments

that can decrease side effects or increase anti-cancer effects.

Saussurea lappa and *Taraxacum mongolicum* are representative herbal medicines that have traditionally been used for cancer treatments in East Asia, such as China, Japan and Korea^{1,7,17}. Several previous studies have demonstrated that these herbs exhibited anti-tumor activities¹⁻⁹.

In the present study, we analyzed effects of *Saussurea lappa* and *Taraxacum mongolicum* on proliferation and apoptosis of a human gastric cancer cell line AGS. Our cell proliferation assay showed that *Saussurea lappa* strongly inhibited cell proliferation of AGS, whereas *Taraxacum mongolicum* exhibited no detectable effects on cellular growth (Fig. 1A). *Saussurea lappa* showed the inhibition effects of cellular proliferation in time-dependent manner and cancer cell specific cytotoxic effects (Fig. 1B, 1C).

In the cell cycle analysis of our study, *Saussurea lappa* extracts showed no detectable changes in cell cycle distribution after treatment, but significant increases of cell population with subG1 DNA content were observed at 24, and 48 hours (Fig. 2A and 2B).

In the annexin V staining, *Saussurea lappa* extracts also showed apoptotic changes in AGS cell lines. We also performed DNA fragmentation assay, DNA fragmentation which means late marker of apoptosis, in this assay, after treatment of *Saussurea lappa* extracts for 36 hr, significant DNA fragmentations were detected in both medicinal herbs (Fig. 3A and 3B).

Being consistently, in our semi-quantitative RT-PCR analysis, the increases of mRNA expression levels of p53 tumor suppressor and its downstream effector p21^{waf1} were detected only in case of *Saussurea lappa* treatment, which means that growth inhibition and apoptosis induction by *Saussurea lappa* are associated with its regulatory effect on the cell cycle- and apoptosis-controlling genes expressions levels of p53

and p21 expression(Fig. 4). *Saussurea lappa* also showed a strong stimulating effect on transcription and induction of expression of Bax(Fig. 5A and 5B).

Apoptosis is a genetically programmed event that can take place by a variety of internal or external stimuli and these signals are regulated by two distinct pathways involved either death receptor (extrinsic) or mitochondria^{18,19}. In the mitochondrial pathway, a variety of death signals triggers the release of several pro-apoptotic proteins, in these proteins Bax is a crucial mediator of the mitochondrial pathway for apoptosis, and loss of this proapoptotic Bcl-2 family protein contributes to drug resistance in human cancers²⁰. Previous studies have shown that tumor cells with mutational inactivation of apoptosis-inducing genes, such as a tumor-suppressor gene p53, failed to respond to chemotherapeutic agent-induced DNA damage, and that a number of apoptosis-related genes such as Bcl-2 family members display both pro-survival and pro-apoptotic functions by forming homodimers or heterodimers²¹. Bax, a tumor suppressor, mediates the p53-induced apoptosis and it increases sensitivity to chemotherapy-induced apoptosis²²⁻²⁴. Meanwhile when Bcl-2 is activated or prevalent, apoptosis is prohibited. Abnormal over-expression of Bcl-2 has frequently been observed in many types of human cancers, and relative expression levels of Bcl-2 to Bax were reported to determine the sensitivity to apoptosis²⁵⁻²⁷. In addition, p53's DNA binding property and its ability of controlling gene transcription and transduction are usually lost by mutation in human cancers and p21^{Waf1} gene is highly activated by p53, and p53-induced p21^{Waf1} leads to arrest of the cell cycle and/or apoptosis¹⁹.

According to our apoptotic analysis by determination of cells with subG1 DNA contents, annexin V staining and RT-PCR analysis, it is likely that the growth inhibition by *Saussurea lappa* extracts might involve apoptosis. When we also analyzed cyclinD1 levels after

the treatments, growth inhibition by *Saussurea lappa* was observed, indicating differential mechanisms underlying for the cytotoxicities by either *Saussurea lappa*. We have confirmed the idea by analyzing intracellular events biochemically, such as the expression of a pro-apoptotic molecule, Bax, and anti-apoptotic molecules including Bcl2 and cleavage of active caspase 3 and also got evidence of Bax protein translocation to mitochondria by subcellular fragmentation.

Collectively, in this subcellular fractionation/immunoblot analysis confirmed that cytotoxic effects of *Saussurea lappa* extracts in AGS cells was mediated by mitochondrial apoptotic pathway. And our observations thus suggests that anticancer effect of *Saussurea lappa* might be associated with their ability to regulate tumor-related genes expressions.

References

1. Jung JH, Kim Y, Lee CO, Kang SS, Park JH, Im KS. Arch Pharm Res.1998;21:153-156
2. Cho JY, Baik KU, Jung JH, Park MH. Eur J Pharmacol.2000; 398: 399-407
3. Cho JY, Park J, Yoo ES, Baik KU, Jung JH, Lee J, Park MH. Planta Med.1998;64: 594-597
4. Yoshikawa M, Hatakeyama S, Inoue Y, Yamahara J. Chem Pharm Bull.1993;41: 214-216
5. M Robles, M Aregullin, J West, E Rodriguez. Planta Med.1995;61:199-203
6. Kim SH. J Kor Ori Med.1998;19:470-499
7. Yamada H, Nagai T, Takemoto N, Endoh H, Kiyohara H, Kawamura H, Otsuka Y. Biochem Biophys Res Commun.1998;165:1292-1298
8. Collins MKL, Rivas AL. Trends in Cell Biology.1993;18:307-309
9. Williams GT, Smith CA. Cell .1993;74:777-779
10. Levine AJ.1992;12:59-79
11. Lane DP. Nature.1992;358:15-16
12. Miyashita T, Harigai M, Hanada M, Reed JC. Cancer

- Res.1994;54:3131-3135
13. Yonish-Rouach E, Resnitzky D, Lotem J, Sachs L, kimchi A, Oren M.1991;352; 345-347
 14. Wang E, Lee MJ, Pandey S. J Cell Biochem. 1994;54:432-439
 15. Kastan MB, Zhan Q, El-Deiry WS, Carrier F, Jacks T, Walsh WV, Plunkett BS, Fornace AJ. Cell.1992;71:587-597
 16. Ginsberg D, Mehta F, Yaniv M, Oren M. Wild-type p53 can down-modulate the activity of various promoters. Proc Natl Acad Sci.1991; 88:9979-9983
 17. Kim DH, Kim SH. J Kor Ori Med.1995;16:386-413
 18. Reed JC. Apoptosis-regulating proteins as targets for drug discovery. Trends Mol Med.2001;7:314-319
 19. Wyllie AH. Apoptosis. Br J Cancer.1994; 67(1):205-208.
 20. Yamaguchi H, Bhalla K, Wang HG. Bax Plays a Pivotal Role in Thapsigargin-induced Apoptosis of Human Colon Cancer HCT116 Cells by Controlling Smac/Diablo and Omi/HtrA2 Release from Mitochondria. Cancer Research. 2003;63:1483-1489
 21. Findly HW, Gu L, Yeager AM, Zhou M. Blood.1997;89:2986-2993
 22. Schlesinger PH, Gross A, Yin AM, Yamamoto K, Saito M, Waksman G, Korsmeyer SJ. Natl Acad Sci.1997;94:11357-11362
 23. Tu Y, Feng-hao Xu, Jin Liu, Versco R, Berenson J, Fady C, Lichtanstein A. Blood.1996;88:1805-1812
 24. Lisovsky M, Estrov Z, Zhang X, Consoli U, Sanchez-Williams G, Snell V, Munker R, Goodacre A, Mack DH, Vartikar J, Pipas JM, Laimins LA. Nature.1993; 363:281-283
 25. Itoh N, Tsujimoto Y, Nagata S. The journal of immunology.1993;151:621-627
 26. Strobel T, Swanson L, Korsmeter S, Cannistra SA. Proc Natl Acad Sci.1996; 93:14094-14099
 27. Yin C, Knudson CM, Korsmeyer SJ, Van-Dyke T. Nature.1997;385:637-640