

- -

, *

* . * . .



0.3%

1

52

1

:



3x5 cm

가

가

가

가 (Fig. 1).

⁶⁾

1

가

MRI

가

(1.5x2x4.5 cm)가

52

T1

10

가

1

가가

(Fig. 2). T2

:

153



Fig. 1. Plain anteroposterior radiograph of the left tibia shows a “sunray-spicule” appearance surrounded by a radiolucent mass.

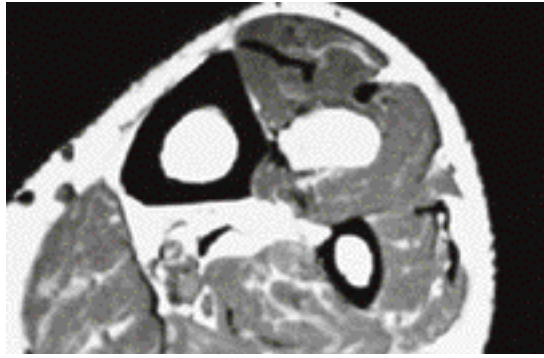


Fig. 2. A transaxial T1-weighted MR image (TR/TE 450/13) showed that the signal intensity of the lipomatous component was identical to that of subcutaneous fat. A low signal intensity rim surrounds the fatty component on the T1-weighted image. There is no discernible abnormality of cortex of the tibia and no communication between the medullary canal of the tibia and the mass.



Fig. 3. A well-defined pale pinkish mass lay to the medial side of the tibialis anterior.

(Fig. 3).

(Fig. 5). 14

(Fig. 4).

(lobule)

0.3%

2)

5)

가

5)

REFERENCES

- 1) **Fairbank HAT**: Parosteal lipoma. *J Bone Joint Surg.* 1953; 35B:589.
- 2) **Fleming R, Alpert M and Garcia A**: Parosteal lipoma. *Am J Roentgenol* 1962; 87; 1075-84 (cited from Yamamoto T, Marui T, Mizuno K: Parosteal lipoma of the distal phalanx: a case report and review of the literature. *Clin Orthop.* 2000 Aug;(389)181-4).
- 3) **Kenin A, Levine J and Spinner M**: Parosteal lipoma. Report of 2cases with associated bone changes. *J Bone Joint Surg.* 1959; 4A: 1122-6.
- 4) **Kim JY, Jung SL, Park YH, Park SH and Kang YK**: Parosteal lipoma with hyperostosis. *Eur Radiol.* 1999;9(9):1810-2.
- 5) **Krajewska I, Vernon-Roberts B and Sorby-Adams G**: Parosteal lipoma. *Pathology* 1988;Apr;20(2): 179-83.
- 6) **Leffert R**: Lipomas of the upper extremity. *J Bone Joint Surg.* 1972;54A:1262-6.
- 7) **Moon M and Marmor L**: Parosteal lipoma of the proximal part of the radius. *J Bone Joint Surg.* 1964; 46A:608-14.
- 8) **Murphy MD, Johnson DL and Bhatia PS et al**: Parosteal lipoma: MR imaging characteristics *AJR.* 1994;162:105-10.
- 9) **Richmond DA**: Lipoma causing a posterior interosseous nerve lesion. *J Bone Joint Surg.* 1953; 35B:83.
- 10) **Yu JS, Weis L and Becker W**: MR imaging of a parosteal lipoma. *Clin Imaging.* 2000 Jan-Feb;24(10):15-8.

**Parosteal Lipoma with Hyperostosis of the Tibia
- A Case Report -**

**Sang-Soo Lee, M.D., Young-Hyun Lee, M.D.*, Young-Gone Youn, M.D.*,
Tae-Kyung Yun, M.D., Yong-Wook Park, M.D., Do-Young Kim, M.D.**

*Department of Orthopedic Surgery, Hallym University College of Medicine, Chuncheon;
Department of Orthopedic Surgery, Pohang St. Mary 's Hospital, Pohang, Korea**

The parosteal lipoma is a very rare benign neoplasm of adipose tissue having an intimate relationship to the periosteum. The parosteal lipomas comprise only 0.3% of all lipomas. We have experienced a parosteal lipoma with hyperostosis of the left tibia, in 52 years old male.

We report a case of parosteal lipoma and its clinical feature with review of the literature.

Key Words: Parosteal lipoma

Address reprint requests to

Sang-Soo Lee, M.D.

Department of Orthopaedic Surgery, Hallym University Hospital

135 Gyo-dong, Chuncheon-si, Gangwon-do, 200-704, Korea

TEL : 82-33-252-9970, FAX : 82-33-252-9875, E-mail : Totalhip@unitel.co.kr