

1), \*2), 1), 1), 1)  
1), 가 \*2)

## A Study on Public Health Doctors' Participation in District Public Health Program of Health Sub-centers in Korea

Jae-Chun Lee<sup>1)</sup>, Yong-Moon Park<sup>\*2)</sup>, Song-Vogue Ahn<sup>1)</sup>, Hae-Young Lee<sup>1)</sup>, Jin-Won Hwang<sup>1)</sup>  
*Korea Health Industry Development Institute; Department of Preventive Medicine<sup>1)</sup>,  
College of Medicine, The Catholic University of Korea<sup>\*2)</sup>*

### = A B S T R A C T =

**Objectives:** To investigate the state of medical care around health sub-centers, public health doctors' participation and opinion in the process of district public health programs.

**Methods:** The study included 1,036 public health doctors who worked at health sub-center all over the country. The data were collected for Feb, 2002 using self-administered questionnaire by mail.

**Results:** One or two doctors were working at health sub-center and 33.5% of health sub-centers was located in the region of the separation of prescription and dispensing. There were another medical facilities in 45.9% of the administrative district(eup or myon) where health sub-centers were located. . The count of medical utilization went down to 14.8±14.8 per a day in Nov, 2001 from 18.0±15.6 in May, 2000, and the decline was much more in the region of the separation of prescription and dispensing. Among public health programs in health sub-centers, public health doctors participated mostly in preliminary medical examination for vaccination and least in health education. They participated in implementation rather than planning or evaluation of health program. Over a half of public health doctors were found to be positive that health programs implemented in their health sub-centers would promote the level of health in community people and they were willing to participate in district public health program if community people were in need.

**Conclusions:** Recently health sub-centers are required to turn into health promotion facilities rather than medical practice facilities. Health program in health sub-centers will be advanced in both quality and quantity by turning the role of public health doctors who have provided medical services mainly into managing health program. Persistent education about managing health program and the policy to motivate participation in health program should be provided for public health doctors.

KEY WORDS: Health sub-center, Health program, Public health doctor

1978 ‘ ’ . 1980  
 ‘ ’( , )  
 가  
 [1]. 2002 8 4,000 가 ,  
 25% 75% 가 ( )  
 [2]. 가  
 가 가  
 ( 30 ) .  
 [3].  
 , [4-7].  
 가 . ,  
 가 . ,  
 가 . ,  
 가 .  
 [8]. 가 ,  
 .  
 , 가 [6].  
 , 가

2002 2

20

(5 ) (11 )

가

( ‘ ’ )

가

가

가

(2002 )

( ) 2002 2

가

1

1

(www.kaphd.org)

( )

2002 2

SAS(ver 8.1)

t-test , ( , ) ,

chi-square test

가

(112 )

가

( 가 )

( )

1.

1,095

, 2001 8

1,255

87.3% [8].

1,036

4

가 589 (56.9%), 가 447 (43.1%), 1 가 351 (34.6%), 2 가 347 (34.2%),  
3 가 316 (31.2%) ( 1).

2.  
( , ) 1 3 , 1 2  
(98.7%) 13  
, 89.7% 3 , 136 (13.2%)  
1 ( 2).

1. :

			%
		589	56.9
		447	43.1
*	1	351	34.6
	2	347	34.2
	3	316	31.2
		1,036	100.0

\*: 22 .

2. :

			%
	*	1	511 49.4
( , )		2	510 49.3
		3	13 1.3
	†	0	14 1.4
		1	122 11.8
		2	410 39.8
		3	378 36.7
		4	71 6.9
		5	15 1.5
		≥6	20 2.0

\*: 2 .

†: 6 .

3.  
( ) , ( )  
1,036 45.9% , 54.1%  
가 . 33.5%가

가 , 476 396 (83.0%)  
 , 4.8±5.2 50.4% 5  
 가 80 (17.0%) 120±79 , 10 15  
 가 33 (41.3%) ( 3).

3.

: (%)

---



---

	326(68.8)	20( 3.6)	346(33.5)
	148(31.1)	540(96.4)	688(66.5)

5 200(50.4)  
 5 - 10 127(32.2)  
 10 - 15 43(10.9)  
 15 26(6.6)  
 396(100.0)

5 5(6.3)  
 5 - 10 17(21.3)  
 10 - 15 33(41.3)  
 15 25(31.3)  
 80(100.0)

---

	476(45.9)	560(54.1)	1,036(100.0)
--	-----------	-----------	--------------

\*: 2

6

4.

2000 5 , 2000 11 , 2001 5 , 2001 11  
 4 ( )  
 . 2000 5 18.0±15.6 , 2000 11 18.2±18.1 , 2001 5 15.9±17.1  
 , 2001 11 14.8±14.8 .  
 2000 5 19.4±15.5  
 , 2000 11 16.7±16.3 , 2001 5 14.3±13.8 , 2001 11 13.3±12.3 , 가  
 2000 5 16.7±15.6 , 2000 11 19.4±19.4 , 2001 5 17.2±19.3 , 2001 11 16.1±16.5  
 .  
 . , 443 2000 5 2001 5  
 ( 4).

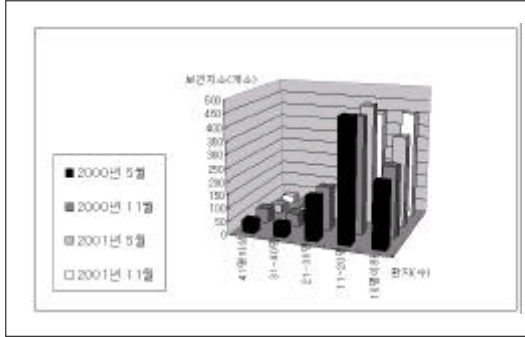
4.

				t	P
2000 5 (n=975)	18.0±15.6	19.4±15.5 <sup>*</sup>	16.7±15.6	2.66	0.008
2000 11 (n=981)	18.2±18.1	16.7±16.3	19.4±19.4	-2.38	0.0175
2001 5 (n=992)	15.9±17.1	14.3±13.8 <sup>*</sup>	17.2±19.3	-2.77	0.0058
2001 11 (n=995)	14.8±14.8	13.3±12.3	16.1±16.5	-3.01	0.0027
	16.7±16.4	15.9±14.5	17.4±17.7		

\*: p<0.01(n=443).



1.



2.

가 ( 1). 2 10

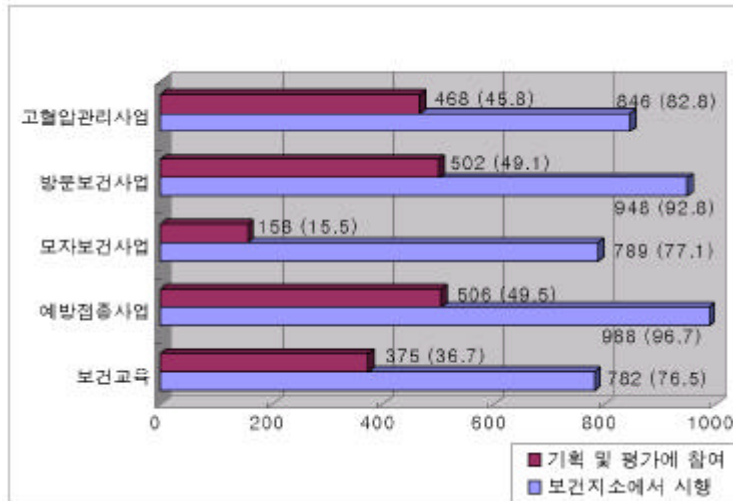
8

5.

1,022 (99.1%), 76.5%, 96.7%, 77.1%,  
 92.8%, ( ) 82.8% ( 3).  
 58.0%, 0.9%

가 가 가

(p<0.01).



3.

가 가  
 36.7% 2, 3 1 (p<0.05).  
 49.5%, 15.5% 가, 3 가  
 (p<0.01). 49.1% 가 (p<0.01)  
 가 29.6% ( 5).

12.9%, 87.1%  
 ( )  
 ( , , ) 29 가 , ( ) 9 ,  
 8 , 7 ,



5. 가 : (%)

	1	2	3					
	143(41.8)*	111(32.4)*	114(36.2)*	212(36.2)	163(37.4)	115(33.6)	258(38.1)	375(36.7)
	183(53.5)	161(46.9)	152(48.3)	283(48.3)*	223(51.2)*	184(53.8)	321(47.4)	506(49.5)
	64(18.7)	42(12.2)	48(15.2)	80(13.7)	78(17.9)	58(17.0)	100(14.8)	158(15.5)
	184(53.8)†	173(50.4)†	133(42.2)†	266(45.4)*	236(54.1)*	166(48.5)	336(49.6)	502(49.1)
	175(51.2)†	155(45.2)†	126(40.1)†	262(44.7)	206(47.4)	147(43.0)	320(47.3)	468(45.8)

\* p<0.05.

† p<0.01(p value obtained by Cochran-Mantel-Haenszel statistics).

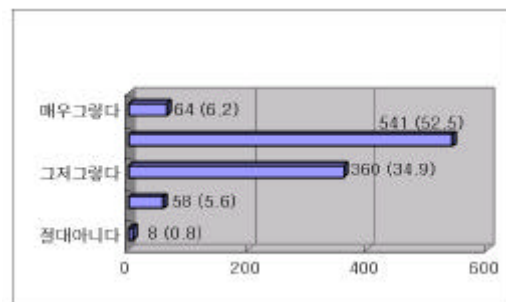
( , ) 8 , ( , ) 5 , 5 , 3 ,  
 3 , 2 , 2 , ( , ) 2 ,  
 가 1 , 1 , 1 , 1 ,  
 1 . 6 .  
 65 가 36.7%  
 (p<0.05), , 75.5% ,  
 (p<0.05), (p<0.05).  
 40.8% , 52.4%  
 (p<0.05). 36.1% .  
 가 , 18.3%

(p<0.05). 가 94.2% 가 .  
 가 18.5% .  
 21.2% (p<0.01). 2  
 가 81.5% . 43.0% ,  
 (p<0.05).  
 가 62.5%, 가 26.1%,  
 가 57.8% . 가 가 22.6%  
 (p<0.05). 가 63.9%,  
 가 25.0% . , 가  
 6

7). , 34.8%, 61.8%, 가 22.6%가 (

7.

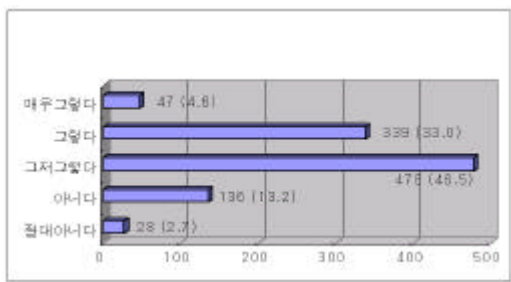
	%
65	36.7
,	75.5
	40.8
	36.1
	18.3
	18.5
	43.0
	62.5
( / )	26.1
( )	25.0
	52.4
	94.2
	21.2
2	81.5
	57.8
가 가 가	22.6



5. 가

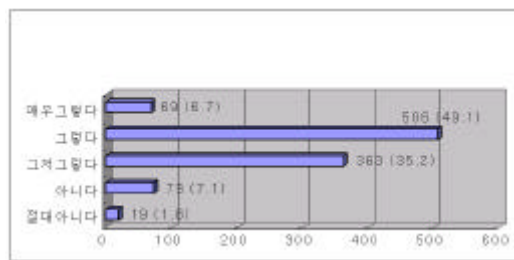
6.

: (%) ,  
 .4가  
 ), ‘ , ‘ , Likert  
 37.6%가 ( 4), 가  
 58.7%가  
 ( 5), 3 1, 2 (p<0.01).  
 55.8%가  
 , 8.9% ( 6).  
 58.1%가 , 14.4% ( 7),  
 2, 3 1 (p<0.05).



4.

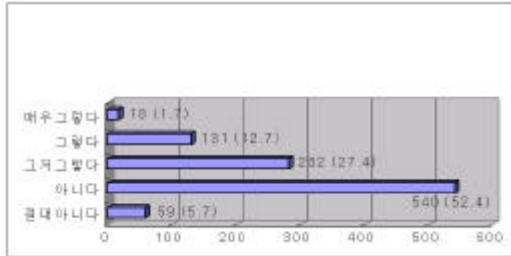
: (%)



6.

(

)



7.

가

: (%)

가

6

가

13.2%

가1

가

3

가

가

가 45.9%

2002

가

5

12

9

2000

가 18.0±15.6 (2000 5 ), 18.2±18.1 (2000 11 ), 15.9±17.1 (2001

5 ), 14.8±14.8 (2001 11 ) , 2000 11

. 1998 10 1999 23.6 , 20.0 ,

[10- 12]. (accessibility) (Kang[13]).

12 가 (2000 5 2001 5 ) 36% (2000 11 2001 11 ) 22%

가 가 [13], 가 가 가

( , ) ( , , )

( )

(77%-97%)

13.2%

1

가 가 가 가 가 가 가

가

가

30%

가

가 가

가 가 가

가

가

가

1, 2

3

가

8.9%

가 58.7%

가

가

가

[8],

가

가

( , )

( )

( )

[6].

가

(1999 -2002 )

가

[14]

가

가

가

가

가

가

2002 2

1,036

, , 가

가 1

2

가 98.7%

3

가 89.7%

가 45.9% , 5 . 33.5%가  
 ,  
 68.8% . 1 2000 5 18.0±15.6 2001 11 14.8±14.8  
 , 가  
 , 96.7% 가 76.5% 가  
 , 가 49.5%, 49.1%  
 가 29.6% .  
 , , 가  
 94.2%, 81.5%, 75.5% , 가  
 가 61.8% , 가 34.8%, 가 가 22.6% .  
 가  
 55.8%, 가 37.6%, 가  
 가 58.7% .  
 가 가 .  
 가

1. Park YH. Present working state and future policy for public health doctors. J Korea Public Health Doctors 1993: 102- 103(Korea)
2. . . 2002
3. . 1999
4. Kim ES. Plan to reform the role of public health doctors in health sub-center. Health and Welfare Policy Forum 1997; 5; 50-57(Korea)
5. Kim HR. Plan to utilize the ability of public health doctors in community. The 29th Korean Medical Association Congress 1999: 204- 209 (Korea)
6. . . .  
2001
7. Lee J. Present state and prospect about the role of public health doctors. The 2001 Autumn Congress of Korean society for Public Health and Medicine 2001: 37-52(Korea)
8. . - I & II. . 2001



9. . 2001 . 2001
10. Sohn SJ. Rural Health sub-center utilization pattern and its related factors. *Korea J Rural Med* 1994; 19(2): 98-106(Korea)
11. Jo HK, Wie CH, Ha EH, Lee SH, Kim JH, Kim SH, Bae HA. A Study on the utilization of health sub-center for primary medical care in a Korean rural community-Su-Dong Myun, NamYang-Ju City, kyung-Gi Do. *Korea J Rural Med* 1996; 21(2): 151-157(Korea)
12. Sohn SJ, Kwon SS, Kim SY, Byun JN, Nam HS, Son Mh. The utilization pattern of a rural health sub-center among suburban farmhouse members. *Korea J Rural Med* 1999; 24(2): 65-

77(Korea)

13. Kang JD. Determinants influencing the utilization of the rural health sub-centers. Korea J Prev Med 1990; 23(3): 316-323(Korea)
14. . 2002