

- (和田) (Monthly Weather Review, 1905)

1879

Weather Review

가

1905 9

가
Monthly Weather Review

Monthly

1905 8

(),

5

9

< 1 >

가

8

6 (02, 06, 10, 14,
135)

18, 22 ,

8

가

		(N)	(E)	(m)
1		35° 6	129° 3	23
2		34° 41	126° 20	8
3		37° 29	126° 37	70
4		39° 9	127° 26	3
5		39° 56	124° 22	5
6		38° 55	121° 34	5
7		40° 40	122° 14	3
8		41° 48	129° 23	57
9	Josin	40° 40	129° 20	4

Table 1. Stations with approximate geographic coordinates

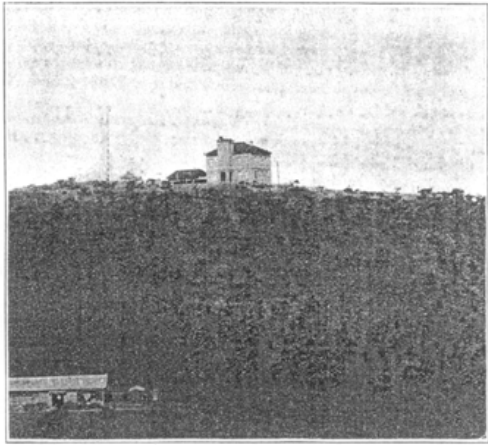


Fig.1. The Chemulpo Meteorological Observatory



Fig. 2. Professor Doctor Wada
(1905 8)

A.

-
-
-
-

B.

-
-
-

C.

-
-

. (Fig. 1

)

가

A.

-
-
-
-

B.

가

1910

가 (, 2001b) ,

(, 2002a)
(, 2001, 2002)

1911 NATURE Quarterly Journal of
Royal Meteorology Society
1911

Wada Y., T. Tamura, 1905: Japanese Meteorological Service in Korea and Manchuria. Monthly Weather Review, September. 397-399.

Wada Y., 1911a: Korean Meteorology. NATURE, January. 341-342.

Wada Y., 1911b: Korean Rain-Gauges of the Fifteenth Century, Quart. Jour. Royal Meteor. Soc. 37, 83-86.

, 2001a: , 11(2), 13-14.

, 2001b: , 11(4), 9-10.

, 2002a: , 12(1), 22-23.

, 2002b: , 12(2), 15-16.

, 1991: 89. 13-18.

