



1.

1998 가 65 가  
 (24.6%) (58.9%)  
 (46.0%)  
 (66.4%)

Strauss Corbin(1990)

(Kim, 1989; Moon & Nam, 2001; Jeong

2.

, 1998).  
 , , , K 가  
 12 65  
 가 16 가  
 가 11 가 8 ,  
 가 3 , 가  
 5 1  
 가 65 69 4 , 70 74 5 , 75  
 가 7 72.8 가 ,

(Kim, 1989, Choi, 1999).

3.

가 2001 7 10 8 17  
 . 1  
 3 2-3

가 (Yoon, 1997; Lee, 1999; Choi, 1999).

120

가 가  
 가가

. 1 30

1 가

4.

Strauss Corbin(1990)

(Kim & Shin, 가

1996).

1.

78 , 28 , 18

가 < 1>.

1)

가 (Kim & Shin, 1996)

2

가 가 가

20 가 가 가

< 1>

가			
가			
가	가		
가			
가	가	가	
가			



, 가.

가

... 가...

가

10

4)

/

가 가... 가  
가 ..

(Kim & Shin, 1996).

'가 ; ' ; ' , ' ;  
'가 가 ,

' ; 가

; ' 가

가

가

가 .. 가

70

가

가 ...

6)

.. 50

(Kim & Shin,

가

... 14

36

,

41.

1996)

' ; ' ;

'가

가

가

가

가

5)

/

/

2.

(Kim & Shin, 1996)

' ; ' ; ' ;  
' ; ' ; ' ;

가

가

가

가 가

...

가

가...

. 가

4

<Figure 1>.

2)

1)

가

, 가 ,

가 , ..

가

가

가

...

가

...

가

...

가

...

가

가 80 가 , ..

가

10

가

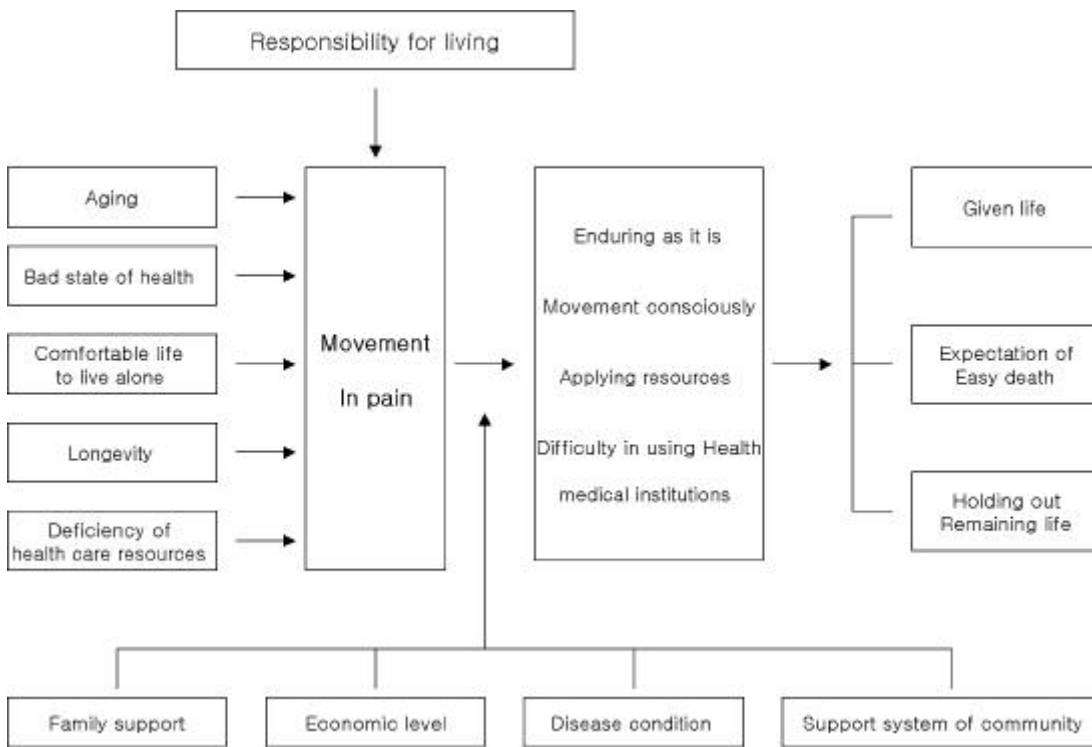
가....

. 가

가

, 가

..



<Figure 1> Conceptual framework of "Movement in pain"



가  
 (Ko, 1995; Lee, 1997; Choi, 2000).  
 2000).  
 가  
 Kim(2003)  
 6  
 ;  
 ;  
 (Resnick,  
 2000- a).  
 59 ( 46 )  
 functional performance  
 Resnick(2000- b)  
 가  
 Cho(2000- b) 199  
 55.8%, 34.2%, 9.0%,  
 Cho(2000- b) 1.0% ,  
 (87.9%)  
 61.3%, 14.6%,  
 8.5%, 2.0%, 1.0%  
 가 1/4  
 가 (Cho, 2000- a).  
 65  
 가



(Kim, 1989)

3.

가 , 가 가 가

가

(Kim, 1996; Choi & Kim, 1997).

Kim(2003)

(Choi & Kim, 1997). Oh, Kim

& Song(1996)

(56.3%), (23.7%)

가

Ellingson

Conn(2000)  
30%

Resnick(2000- a)

50%

가

(47.5%)

(26.5%),

(19.8%),

(4.3%)

60

10%

1/3

Yoon(1997)

가 (87.9%)

61.3%,

14.6%,

8.5%,

2.0%,

1.0%

Cho(2000- b)

가

4.

Padula, Nigg, 2000).

(Burbank,

Strauss Corbin(1990)

K

가

12

65

16

가

78

, 28

, 18

가

가

가

3

4

Kim(2003)

가

가

Cho(2003)

가

가

가

가

가

1.

2.

가

3.

## References

- Burbank, P. M., Padula, C. A., Nigg, C. R. (2000). Changing Health Behaviors of Older Adults, *Gerontological Nursing*, 26(3), 26-33
- Cho, M. O.(2003). The use of professional health care systems among the elderly in rural communities, *Journal of Korean Academy of Nursing*, 33(6), 731-742.
- Cho, Y. H. (2000- a). The relationship of aging perception, living practice, and health state of elderly, *Journal of the Korea Gerontological Society*, 3(1), 72- 84.
- \_\_\_\_\_(2000- b). Health problems of elderly women in Chonnam Province, *Korean Journal of Research in Gerontology*, 9, 71- 88.
- Choi, J. H., Lee, H. G., Han, J. C., Yoon, J., Jeong, C. S., & Oh, K. J. (2000). *Understanding of human behavior: Psychology*, Bupmoonsa, Seoul.
- Choi, Y. H. (1999). Health of elderly women, Academic symposium of Ewha Women's Nursing Science Institute, Autumn, 71- 82.
- Choi, Y. H., Kim, S. Y. (1997). Development of health behavior assessment tool of the Korean elders, *Journal of Korean Academy of Nursing*, 27(3), 601-613.
- Ellingson, T., Conn, V. S. (2000). Exercise and Quality of Life in Elderly Individuals, *Gerontological Nursing*, 26(3), 17- 25
- Eom, M. R. (2002). *Aging experience of older women*, Doctoral dissertation, Seoul University of Korea, Seoul.
- Jeong, K. H., Cho, A. J., Oh, Y. H., Byun, J. G., Byun, Y. C., & Moon, H. S. (1998). *National Research on the Realities of Living and Welfare Need in the Elderly*, Korea Institute for Health & Social Affairs.
- Kim, J. S. (1988). *A study on the social activity and ego integrity of elderly*, Doctoral dissertation, Ewha Women's University of Korea, Seoul.
- Kim, S. J., Shin, K. R. (1996). *Basics of Qualitative Research: Grounded Theory Procedures and Techniques*, Hanul Academy.
- Kim, S. Y. (1996). *A study on the health behavior of Korean elders*, Doctoral dissertation, Ewha Women's University of Korea, Seoul.
- Kim, Y. H. (2003). *Exploring the health behavior of elderly women*, Doctoral dissertation, Ewha Women's University of Korea, Seoul.
- Ko, S. D. (1995). *A study on the analysis of factors deciding quality of life for the elderly*, Doctoral dissertation, Ewha Women's University of Korea, Seoul.
- Lee, K. S. (1999). *Situation of health promotion programs for elderly in the public health system*, Symposium on the development of public health promotion programs in metropolitan city, 71- 81.
- Lee, J. W. (1997). *A study on the quality of life of the aged by family type*, Master's thesis, Dept. of Health Administration, Seoul National University of Korea, Seoul.
- Lee, W. S. (2002). Economic spreading effect according to aging gap by regional groups, *LG Weekly Economy*, 678, 11-18.
- Moon, S. S., Nam, J. J. (2001). Health status of elderly in Korea, *Journal of the Korea Gerontological Society*, vol. 21, No. 1, 15- 29.
- Oh, J. J., Kim, S. M., Song, M. S. (1996). Health promoting behaviors and factors contributing health practice of Korean urban elderly, *Journal of Korean Academy of Adult Nursing*, 8(2), 324- 337.

Resnick, B. (2000-a). Exercise and Older Adults, *Gerontological Nursing*, 26(3), p.3

\_\_\_\_\_ (2000-b). Functional Performance and Exercise of Older Adults in Long-Term Care Settings, *Gerontological Nursing*, 26(3), 7- 16.

Strauss, A., & Corbin, J. (1990). *Basics of Qualitative Research: Grounded Theory Procedures and Techniques*, CA: SAGE.

Yun, E. H. (1997). *A study on self care style of the aged 60 years and over in rural area of Korea*. Master's thesis, Dept. of Health Administration, Seoul National University of Korea, Seoul.

- Abstract -

### Elderly Women's Health Care Experience at Doctorless Farm Villages

*Kim, Young Hee) · Han, Young Ran)*

**Purpose:** This study investigated elderly women's health care at doctorless farm villages based on information-about the perception and management of their health. **Method:** Grounded theory method as mapped out by Strauss and Corbin-was used to record and transcribe

open-ended interviews. The data from these interviews were analyzed. **Result:** We found 18 categories and 28 sub-categories. In data analysis, the core phenomenon was named "movement in pain". Causal condition as essential prerequisites were aging symptoms, bad state of health, comfortable life to live alone, longevity, deficiency of health care resources, and sub-categories of the phenomena revealed acceptance of discomfort, enduring pain, continuity of movability. Elderly women's health-related activities included enduring as it is, movement consciously, applying resources, difficult in using health medical institutions. Family support, economic level, disease condition, support system of community were influenced to their health-related activities. Consequently, the results indicated that they wanted to accept given life, expected easy death, held out remaining life. **Conclusion:** This study revealed that the most important factor of elderly women's health care was "movement in pain". On the basis of this study, we needed to develop diverse nursing implementation plans for maintaining and improving' movability without pain'.

Key words : Doctorless farm villages,  
Elderly women, Health care

---

1) Department of Nursing, Dongguk University