



가 , 가

가 ( 1). 가

가 1 -

4 , 1 -3

4 , 4

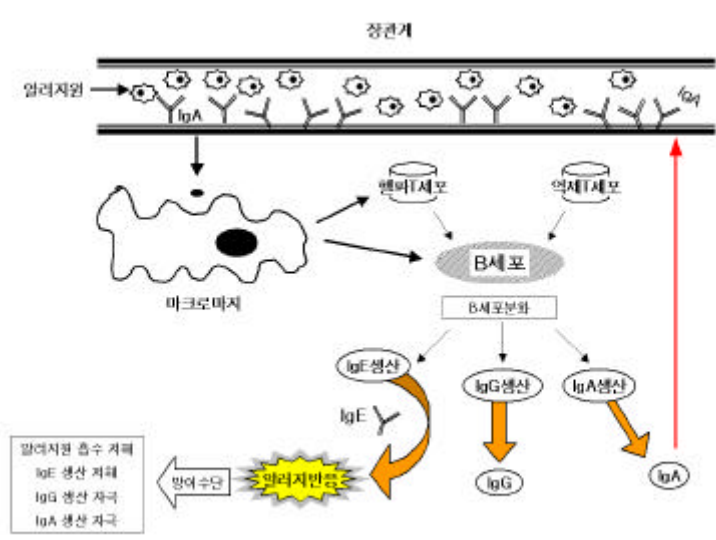
3). 1 -3

가 , 4

가

2. 가? 1

IgE



1.

IgE가 , 1  
 IgE 5,10) B IgE 11,12)

IgE가 가

( 2).

가

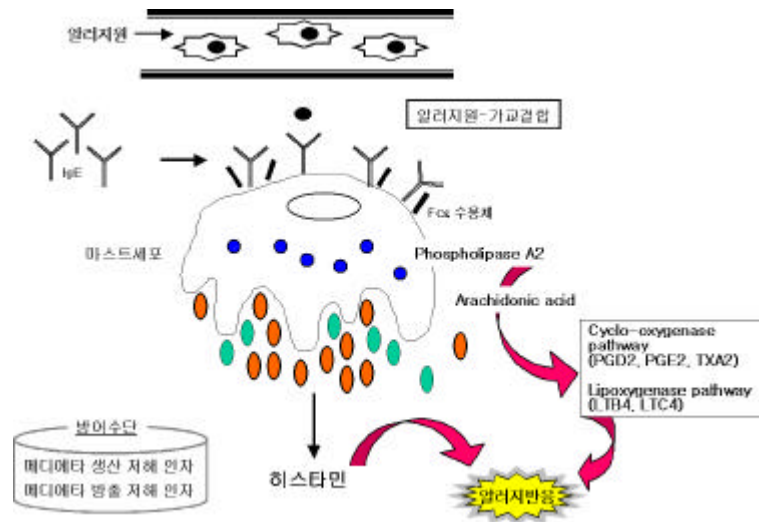
가

가

가 ?

가

1



2.

가 <sup>13)</sup> 가 .

가

IgA , ,  
(Peyer patch) ,  
IgE 가

( ) ,

가

가 1 가 가 ,  
가 ,  
IgA , IgG , 가  
IgE , 가 가

가 ( ) 가

가 <sup>14,15,16)</sup> ,  
가

가 IgE E  
가 IgE <sup>3)</sup> ,  
가 ( , , ) ,  
가 ( , , , , , , )





- M.(1995) Free Bile acids inhibit IgE production by mouse spleen lymphocytes stimulated by lipopolysaccharide and interleukins. *Biosci. Biochem.* 159, 624- 627.
8. Lim BO, Yamada K, Pham H, Watanabe t, taniguchi S, Sugano M(1996) Effect of n-3 polyunsaturates fatty acids and lectins on immunoglobulin production by spllen lymphocytes of sprague-dawley rats. *Biosci. Biotech. Biochem.* 60, 1025- 1027
  9. Lim BO, Yamada, K., nonaka Michiko., Kuramoto Yuichiro., Pham, H. and sugano, M. (1997). Dietary fibers modulate indices intestinal immune function in rats. *J. nutr.*, 127, 663- 667
  10. Lim BO., Christopher A Jolly., Kaliquz Zaman and Gabriel Fernandes(2000) Dietary (n-3) Fatty acids and Energy restriction modulate mesentric lymph node lymphocyte function in autoimmune-prone (NZBxNZW)F1 mice. *J. nutr* 130, 1657- 1664
  11. Lim BO., (2002) Effects of Ganhuangenin obtaines from *Scutellaria radix* on the chemical mediator production of peritoneal exudate cells and immunoglobulin E level of mesentric lymph node lymphocytes in spargue-dawely rats. *Phyto Theraphy* 16. 166- 170
  12. Marks, D. R. and Marks, L. M.(1993) Food allergy. *Prostagrad. Med.* 93, 191- 201.
  13. Metcalfe, D., D. (1991) Food allergy. *Current Opinion Immunol.* 3 : 881- 886
  14. Plaut, M, and Zimmerman, E. M. (1993) Allergy and mechanisms of hypersensitivity. in : paul, W, E., eds. *Fundamental immunology*. 3rd ed. New York : Raven Press: 1399- 1425
  15. Yamada Koji · Sugano Michihiro, Effect of Dietary level of pectin on immunoglobulin and cytokine production by mesentric lymph node lymphocytes and interleukin-2 receptor in rat, *Food Sci Technol, Res*, 8, 14- 16, 2002
  16. Watanabe, S., Sakai, N., Yasui, Y., Kimura, Y., Kobayashi, T., Mizutani, T. and Okyuyama, H.(1994) A high a-Linolenate diet suppresses antigen induced immunoglobulin E response and anaphylatic shock in mice. *J. Nutr.* 124, 1566- 1573
  17. Yamada, K., Ikeda, I., Sugahara, T., Shirahata, S. and Murakami, H.(1989) Screening of immunoglobulin production stimulating factor(IPSF) in foodstuffs using human-human hybridoma HB4C5 cells. *Agric. Biol. Chem.* 53, 2987- 2991.
  18. Yamada, K., Ikeda, I., Maeda, M., Shirahata, S. and Murakami, H. (1990) Effects of immunoglobulin production stimulating factors in foodstuffs on immunoglobuin production of human lymphocyte, *Agric. Biol. SChem.* 54, 2987- 2991.
-

