

登村高等學校 計劃設計 研究

A Schematic Design for the Dung-Chon High School in Seoul

金惠貞*

Kim, Hye-Jung

金承濟**

Kim, Seung-Je

1.

1.1.

7

7

1.2

691-2

7

가가

가

1.3

1.3.1

1.3.2

()

*

**

()

가

가

7

가

가

가

가

1.3.3

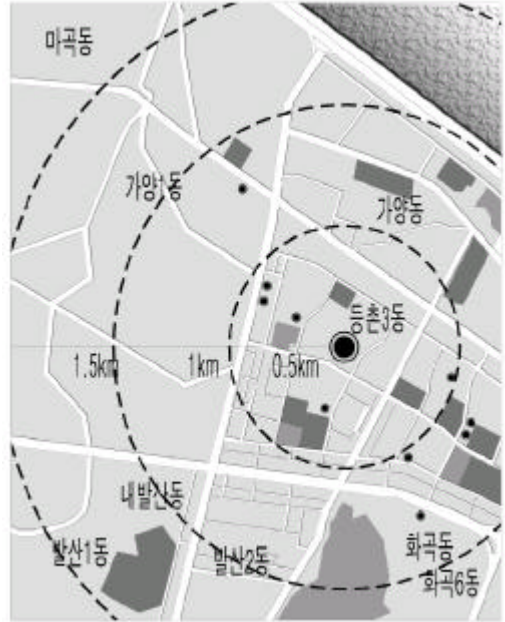
:
 :
 : 14,195.6m²(4,384)
 : 12 36
 : 1,260 (35)
 : 7 ()

691-2

2.

2.1

가



1.

3

2

100%

3

가

가



2.

가

. 95 12 1 1

가

2.2

가 5 가

19 , 57 , 32 ,
13 , 1

105,363
3

가 가

가

1996 50.9 2000 47.7

1.

-	-	1	-	-	-	-	-
1	12	1	1	16			

가
4
2.3
2.3.1
4

가

가

가
가



3.

20m

2.3.2

4



4.

2.3.3

10m

3

20m

가 가



5.

2.3.4

2

20m



6.

3.

3.1

3.1.1

· 7 ()

3.1.2

3.1.3

3.2

2

2.

	가
	가

3.3

D

35

3

1 8.1m × 8.1m

3.

				(㎡)	
			8	623.295	
			2	131.22	
			9	688.905	
			6	459.27	
			8	656.1	
		. 가	2	196.83	
			1	65.61	
			1	98.415	
			1	98.415	
			5	393.66	
		2	1	65.61	
			2	131.22	
			3	196.83	
			1	65.61	
			3	196.83	
	open space	× 8	8	787.32	
		□ × 9	9	294.245	
	home base	□ × 36	1	36	
			1	98.415	
			2	196.83	
			1	98.415	
			1	98.415	
			1	98.415	
			1	65.61	
			□	1	32.805
			□	1	32.805
		+		3	295.245
			1	65.61	
	(+)		1	600	
			1	65.61	
			1	65.61	
			1	65.61	
			□	1	32.805
			□	1	32.805
			□	1	32.805
			□	1	32.805
			□	1	32.805
			1	65.61	
			□	1	32.805
			□	1	32.805
				8,506.005㎡	
				3,402.402㎡	
				8,506.005+3,402.402 = 11,908.407㎡	

: 1(8.1 × 8.1m=65.61㎡) □ : 0.5 × (=32.805㎡) : 1.5 × (=98.415㎡)

*

30 40%

4

4.1 1

4.1.1

4. 1

·	14,495.6㎡ (4,384)
·	3,555.11㎡ (1,075.420)
·	14,837.19㎡ (4,488.249)_
·	24.525%
·	69.763%
·	1 5
·	50

4.1.2

(1)

·

·

·

·

1

·

·

·

가 가

(2)

·

·

·

가

·

·

가

·

·

· 2 open

·

(3)

·

· Top light mass

·

· mass

·

·



7. 1



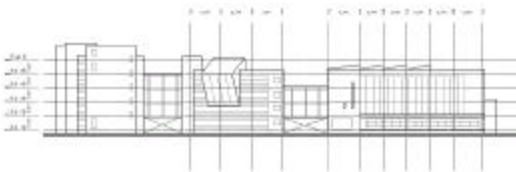
8. 1 1



9. 1 2



10. 1



11. 1



12. 1

5.		1	
	(m ²)		(m ²)
1	632.09	3	401.81
	125.83		65.21
	94.44		63.35
	72.37		97.58
	24.60		181.90
	32.64		121.16
	31.60		325.97
	68.85		() 36.46
	30.71		() 28.95
	188.32		154.37
	290.69		가 94.03
	689.79		49.77
	68.77		65.45
	973.90		12.63
	3,324.07		computer 296.00
2	457.48	4	32.80
	33.21		855.00
	94.03		2,880.85
	325.97		553.44
	65.21		94.03
	30.14		45.23
	32.60		33.21
	() 28.95		154.37
	() 36.46		234.90
	24.92		325.97
	122.52		() 36.46
	70.01		() 28.95
	32.14		777.40
	31.66		2,283.60
	5		65.61
26.41		65.37	
63.75		164.33	
175.09		94.03	
579.60		65.41	
() 29.52		113.57	
() 29.52		538.10	
30.24		1,692.82	
154.37		810.74	
1,016.50		810.74	
3,555.11	13,738.30		

金承濟

1. 2

6. 2

·	14,495.6m ² (4,384)
·	4,182.819m ² (1,265.30)
·	13,960.724m ² (4,223.12)
·	28.856%
·	96.310%
·	1 5
·	49

4.2.2

(1)

·

·

·

·

·

·

·

(2)

·

2

·

1

·

2

)

(

·

·

·

·

, ,

(3)

·

mass 3

, mass

·

· 3

mass

·

·

·

void

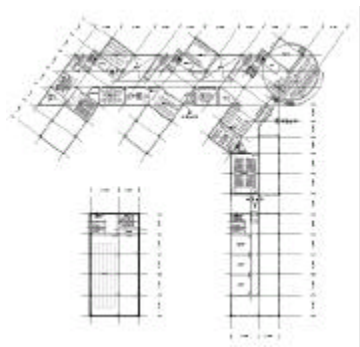
solid

·

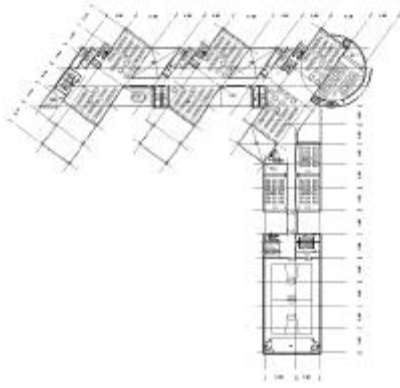
mass



13. 2



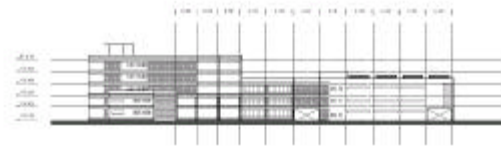
14. 2 1



15. 2 2



16. 2



17. 2



18. 2

7.		2		
	(m ²)		(m ²)	
	622.080		218.935	
()	25.616	2	622.080	
()	22.376		/	47.992
	29.540		123.626	
	77.988		1,142.918	
	777.60		3,426.35	
	39.646	3	331.088	
()	26.230		71.079	
()	26.230		112.378	
	89.910		133.962	
	89.910		가	99.939
	44.698		98.713	
	65.610		199.652	
	65.583		189.849	
	14.344		131.220	
	89.910		184.219	
	66.101	65.610		
	30.485	67.956		
1	/	22.584	940.665	
	89.910		2,626.33	
	23.203		81.108	
	22.584		23.693	
	179.820		66.218	
	179.820		298.592	
	237.802	4	66.218	
	97.650		288.563	
	29.391		198.653	
	65.610		198.653	
	131.220		67.956	
	151.404		721.306	
	1,228.875		2,010.96	
	3,108.53		71.079	
	674.325	5	388.502	
()	59.488		388.502	
()	54.513		420.998	
	83.516		67.956	
	83.516		673.923	
	32.198		2,010.96	
	283.243		13,960.72	
2				

4.3 3

8. 3

·	14,495.6m ² (4,384)
·	4,002.38m ² (1,210.719)
·	14,804.90m ² (4,478.46)
·	27.611%
·	102.34%
·	1 5
·	49



19. 3

4.3.2

(1)

· ‘-’ ‘-’
2 volume

-
-
- Atrium
-

(2)

· ,

-
-
-
- Atrium

(3)

mass ()

-
- mass

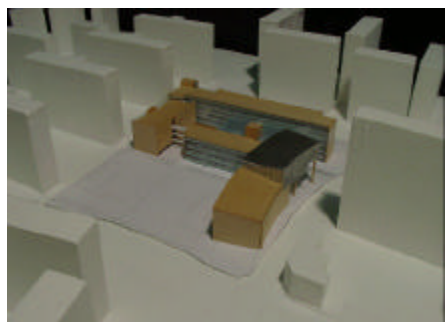
- Atrium



20. 3 1



21. 3



22. 3

9.		3	
	(㎡)		(㎡)
1	265.68	3	34.42
	588.70		66.42
	66.42		100.86
	132.84		96.23
	89.27		325.60
	35.26		() 43.50
	66.42		() 29.44
	30.71		147.10
	159.18		489.06
	1093.80		1,156.10
	967.34		3,152.62
	4,048.42		199.26
	2		259.12
199.26		99.63	
34.44		2 66.42	
33.21		199.26	
99.63		206.50	
가 99.63		325.60	
325.60		() 43.50	
63.02		() 29.44	
66.42		119.96	
33.21		1,091.80	
33.21		2,580.34	
66.52		531.36	
64.99		132.84	
() 43.50	29.44		
() 29.44	556.31		
159.18	96.05		
/ 66.80	676.30		
1,324.80	2,022.14		
3,001.58	776.30		
464.94	776.30		
199.26	15,581.20		

5.

5.1

5.1.1 1

·

·

·

·

·

·

·

·

가

5.1.2 2

·

·

· open space

· , ,

·

· /

가

· 가 2

· 2

5.1.3 3

·

· Atrium

· Atrium

· 5

·

·

5.2

, , , , ,

, 10 가

