

中溪高等學校 計劃設計 研究

A Schematic Design for Jung-Kye High School in Seoul

申範植*

Shin, Buhm-Shik

崔 壹**

Choi, Il

1.

7

1.1

21

가

1.2

7

가

가

2000

7

21

7

*

**

13 6402 (2000)

(漢

川)



2- 1

1.3

1.3.1 :

1.3.2

, 1914

7

21

. 1963

, 1973

1988

, 1 4

1.3.3

- : 364- 10
- : 14,028m² (4,243)
- : 36
- : 1,260 (35)
- : 1 , 4
- : 7

가
가

1.3.4

51 61
800 , 26m,
6.5m 가 61-22

2.

2.1

2.1.1

(銅)

가 가

5.23km²,

가 . 183
 (喪制)
 (灰槨墓)가
 2.1.2
 1988 1 1
 4, 7
 26 19
 37° 37' 24" 11 127° 06' 41"
 11 895- 1 37° 37'
 40 20 127° 02' 30" 26
 6.17km . 42- 1 37°
 36 40 51 127° 03' 50" 55,
 1- 1 37° 41' 36" 23 127° 0'
 4 48 82 9.23km

2.2
 1988 525,031 (263,901,
 262,130) , 10 1998 12
 595,891 (295,026,
 300,865)
 가 가
 가

가가

가 가

가
 80
 1 2
 2- 1 2000
 2.3
 2.3.1
 89 , 39 ,
 23 , 22 , 1
 4
 2- 2 2000

2001	203,571	638,038	316,053	321,989	17,997 3.14

	89	-	-	-	231 738
	39	-	-	-	1,419 1,441
	23	-	-	-	779 788
	22	-	-	-	859 827
	1	-	-	-	38 -
	4	-	-	-	102 -
	12	-	-	-	122 -
	4	-	-	-	100 -
	194	-	-	-	3650 3794

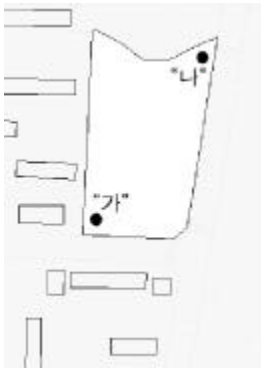
2.3.2
 가

2- 3

	(201)	(201)	223- 19/ 2 223- 19
	(16)		766
	(16)		230- 1
	(43)		230- 1
	(69)		16- 1
	(70)		16- 1
	(55)		2767- 2
	(27)		12

2.3.3

“가” 가 , (Leq)63.6dB, “ ”



64.7dB

가

65dB

- (1)
- (2)
- (3)
- (4)
- (5)

()

2-2

가

4 20m

가

가

7

가



2-2

2.3.4.

20m 가

가

7

(7.5m×9.0m)

가

가

20m , 20m 가

가

3.

가

가

1 10

3.1 7

2

3

1·2

6

가

4 가 3 ,

3-1

N	
A	
B	
C	(A /A)
D	
E	(가 /D)

3.2

$$N = \frac{\sum A \times B \times C}{D \times E}$$

7

가 ,

가

가 ,

()

가

2·3

3.2.1

가 2가

3.3

가

가

가가

		36		
	()	7	67.5	472.5
	()	2	101.25	202.5
	1	2	67.5	135
	2	2	33.75	67.5
		1	67.5	67.5
		1	67.5	67.5
/		2	67.5	135
		5	67.5	337.5
	()	1	101.25	101.25
		1	67.5	67.5
		1	67.5	67.5
		1	135	135
		1	135	135
		1	135	135
		1	135	135
		1	67.5	67.5
		4	67.5	270
/		2	135	270
가		1	135	135
		1	135	135
		2	135	270
		1	67.5	67.5
		2	67.5	135
		1	135	135
		1	67.5	67.5
		1	33.75	33.75
		1	67.5	67.5
		1	67.5	67.5
		1	135	135
		1	33.75	33.75
		1	33.75	33.75
		1	135	135
		1	67.5	67.5
		2	33.75	67.5
		3	33.75	101.25
		1	67.5	67.5
/		2	67.5	135
		2	33.75	67.5
		1	33.75	33.75
		1	33.75	33.75
		4	33.75	135
		2	33.75	67.5
		2	67.5	135
				5940.0
				3198.5
				9138.5
		1	270	270
		1	135	135
		1	67.5	67.5
		1	405	405
	()	1	945	945
				1822.5
				10961.0

5.

5.1

5.1.1

20m 가

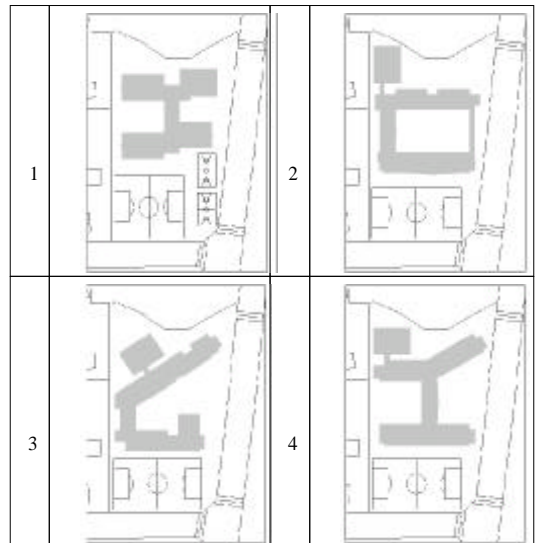
가

가

7

가

5.1.2 1



1) -1

가



6 1 -1

50

가

5.1.3 2
2000 10



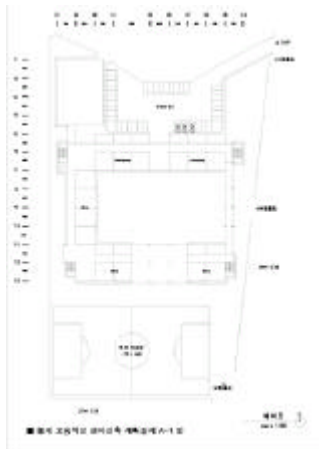
8 1 -3

2

2

가 가

2) -2



7 1 -2



5-1 1,2 -1

1

가

() 가

3) -3

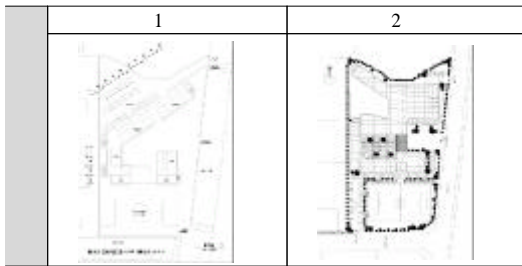
가

2



5-2 1,2 -2

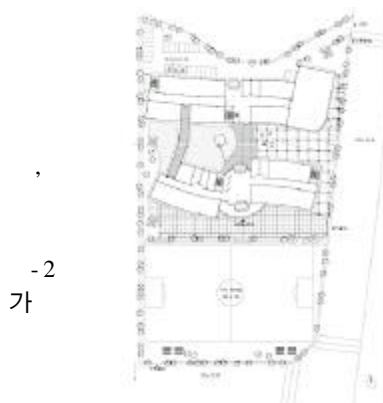
3



5-3 1,2 -3

5.1.4 3

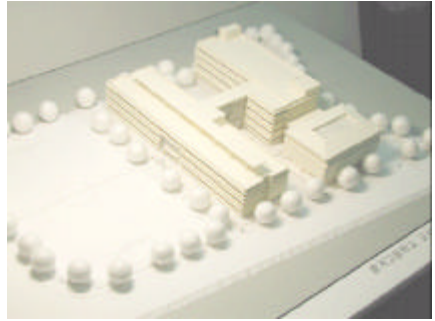
3



-2
가

9 3 -2

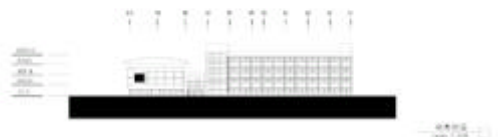
5.2 -1



10 -1

BLOCK PLAN

3

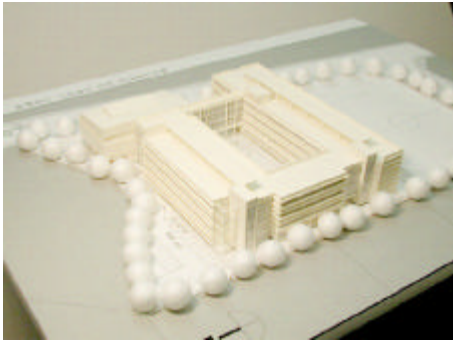


12 -1



13 -1

5 -2



14 -2



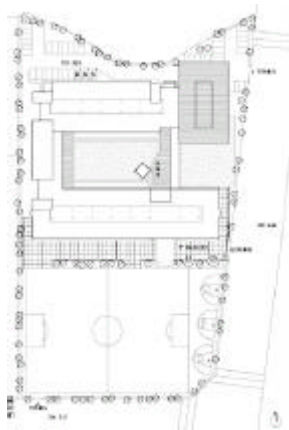
17 -2

5.4 -3



18 -3

ZONING
BLOCK PLAN



15 -2

가

-2

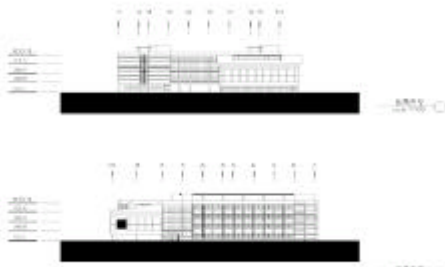
-1,

ZONING
BLOCK PLAN

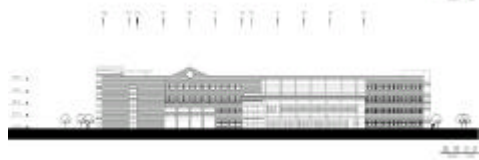
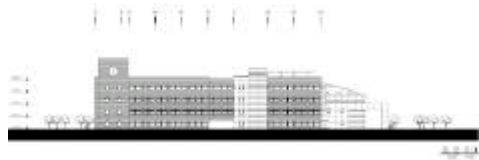


19 -3

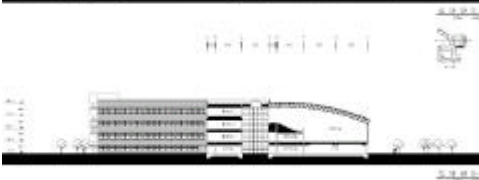
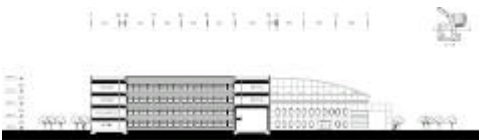
가



16 -2



20 -3



21 -3

6.

7

가

가

1

가

, 2 3

가

1. , , 16 3 , 2000.3
2. , , 2000.9
3. , , 1998.9
4. 2000 , 2000. 11.
5. , , 1996. 6.
6. , 가 , 2001.11
7. , , 2001. 3