

校舍再配置 初等學校 特別教室 選好傾向 比較

- 光州廣域市 校舍再配置 對象 初等學校 中心 -

A Comparison on the Trend of Preference about Classroom for Special Purposes Related with School Relocation in Elementary School

- Concentrated on the relocation-needed elementary schools in Kwangju city -

丁 胄 聲*

崔 秉 冠**

Jeong, Joo-Seong

Choi, Byung-Kwan

朴 永 菽***

柳 浩 燮****

Park, Young-Sook

Rieu, Ho-Seoup

Abstract

This study is performed to understand a trend of preference about classroom for special purposes related with elementary school relocation. It is analyzed based on the questionnaire of teachers at work in the two schools having similar educational environment. The results showed that it is desirable to locate rooms for science or practice in low story and music room in the lowermost or uppermost story. Rooms for art, linguistic education and computer had not limited any place. It is shown that the scale of each preparation room is significantly different with each grade and more large scale is needed in higher grade. These results reflect that the present arrangement of classrooms for special purposes is not adequate and require more reasonable arrangement with the grade in the architectural plans for relocation-needed elementary schools.

Keywords : Elementary school, School Relocation, Classroom for Special Purposes, Trend of Preference

1.

가

1.1

1)가

7

*
**

1) , 1995.12, , 1997.12, 21
1999.11

2)

1.2

7

2

가

가

2. 7

7

2-1

3)

가 가

가

7

가

2) , 2001.4 ,
 3) (2000), 7 , CR 2000-8,

2-1. 7

	가
	(),
	(),

가

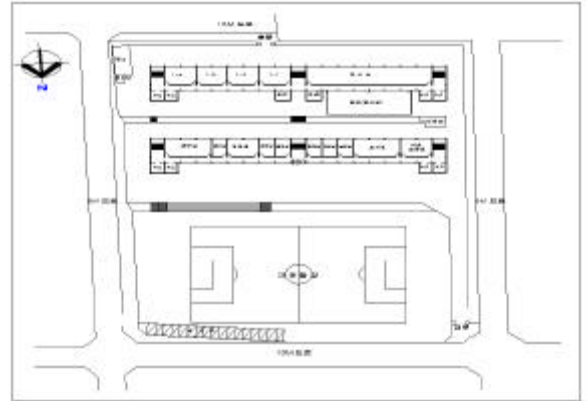
가
가

1, 2

2-2.

7 가 가

3.



2.

3.2

80

3.1

2

5 7

가

가

3-1.

	1992. 3	37	1439	38.9	1
	1989. 3	38	1471	38.7	1

3-2.

	(㎡)	(㎡)	(㎡)	(%)	(%)
	11,064	1,652	6,833	14.93	61.75
	13,060	1,970	6,613	15.07	49.95

3-2

14.93, 15.07% 15%

61.75, 49.95% 50 60%

5

가



1.

3-3.

		(m ²)		
	1	101.25	.	
	4	67.5	.	
	1	67.5	.	
	4	135.0	.	(67.5)
	4	67.5	.	
	4	67.5	.	
	1	101.25	.	
	2 · 4	67.5	.	2
	3	67.5	.	
	3	67.5	.	
	3	67.5	.	

3.3

2001. 5 2001. 6

90 88 97.7%
 81

3-4.

			(%)
		25	30.9
		56	69.1
20 30 - 40 50		12	14.8
		28	34.6
		24	29.6
		17	21.0
		42	51.9
		39	48.1
1 · 2 3 · 4 5 · 6		24	29.6
		23	28.4
		25	30.9
		9	11.1

3.4

3-4

SPSS WIN 7.5 가

4.

4.1

4.2

4.2.1

61%가 1

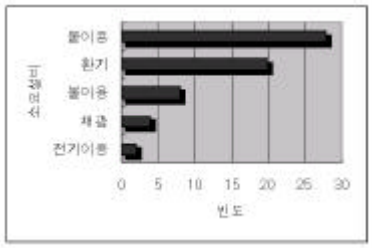
20%가 2
80%가

75%

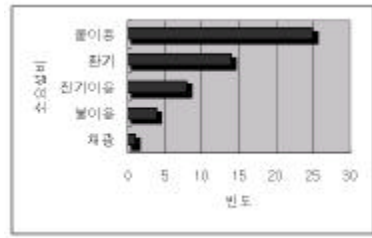
1.5 가 64.1%, 2.0 가 26.6%

4-1.

			(%)
	1	39	60.9
	2	13	20.3
	3	3	4.7
	4	0	0
		9	14.1
	Total	62	100
		12	18.8
		25	39.1
		23	35.9
		4	6.3
Total	64	100	
	0.5	0	0
	1.0	6	9.4
	1.5	41	64.1
	2.0	17	26.6
	Total	64	100
	0.5	24	38.1
	1.0	22	34.9
	1.5	10	15.9
	2.0	7	11.1
	Total	63	100



3.



4.

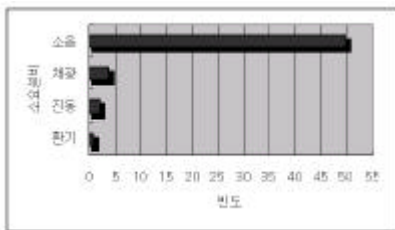
가 70%
 0.5
 (38.1%) 1.0 (34.9%)
 가 ,
 가 ,
 가 ,
 4.2.2
 60%가 1
 30%
 가 1
 가
 4-2.

			(%)	
	1	36	60.0	
	2	4	6.7	
	3	2	3.3	
	4	0	0	
		18	30.0	
	Total	60	100	
		2	3.6	
		8	14.3	
		40	71.4	
		6	10.7	
	Total	56	100	
		0.5	1	1.8
1.0		2	3.6	
1.5		33	60.0	
2.0		19	34.5	
Total		55	100	
		0.5	20	36.4
	1.0	22	40.0	
	1.5	10	18.2	
	2.0	3	5.5	
	Total	55	100	

1.5 , 32.7%가
 54.5%가
 2
 0.5 (37%), 1.0
 (38.9%)
 가 ,
 가 ,
 가 ,
 4.2.3
 가 1 47.4%,
 가 28.1%, 4 14%
 가
 78.9%,
 19.3%
 가 67.9%,
 1.0 21.4%
 가 37.5%, 1.0 30.4%
 가

4-3.

			(%)
	1	27	47.4
	2	1	1.8
	3	4	7.0
	4	9	15.8
		16	28.1
	Total	57	100
		0	0
		11	19.3
		45	78.9
		1	1.8
	Total	57	100
	0.5	1	1.8
	1.0	12	21.1
	1.5	41	71.9
	2.0	3	5.3
	Total	57	100
	0.5	23	40.4
	1.0	17	29.8
	1.5	14	24.6
	2.0	3	5.3
	Total	57	100



5.

4.2.4

48.2%

가 49.1%,
가 29.8%

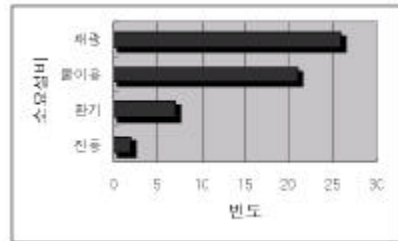
36.4%, 1.0

30.9%

가

4-4.

			(%)
	1	20	35.7
	2	2	3.6
	3	3	5.4
	4	4	7.1
		27	48.2
	Total	56	100
		5	8.8
		17	29.8
		27	47.4
		8	14.0
	Total	57	100
	0.5	0	0
	1.0	6	10.7
	1.5	34	60.7
	2.0	16	28.6
	Total	56	100
		0.5	21
1.0		17	30.4
1.5		12	21.4
2.0		6	10.7
Total		55	100



6.

4.2.5

1.5

53.6%가
, 28.6%가 2.0

59.3%

0.5

48.1%,

26%

66%가 , 15.1%가 1.0 , 13.2%가 2.0 , 1.5

가 50%, 24.1%, 19%

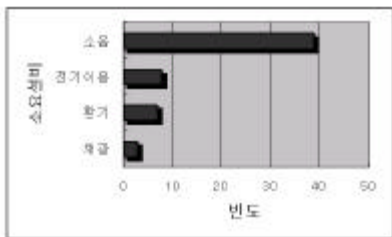
0.5 53.7%

1.5 , 43.9%가 2.0 가 49.1%가

가 , 57.4%가 , 25.9%가 0.5 1.0

4-5.

			(%)
	1	3	5.6
	2	6	11.1
	3	5	9.3
	4	8	14.8
	T total	32	59.3
		4	7.4
		10	18.5
		26	48.1
		14	25.9
	T total	54	100
0.5		3	5.7
	1.0	7	13.2
	1.5	35	66.0
	2.0	8	15.1
	T total	53	100
0.5		29	53.7
	1.0	11	20.4
	1.5	13	24.1
	2.0	1	1.9
	T total	54	100



7.

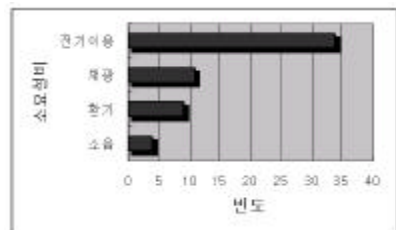
4.2.6

63.8%가

가

4-6.

			(%)
	1	7	12.1
	2	3	5.2
	3	6	10.3
	4	4	6.9
	T total	38	65.5
		5	8.6
		11	19.0
		28	48.3
		14	24.1
	T total	58	100
0.5		1	1.8
	1.0	3	5.3
	1.5	28	49.1
	2.0	25	43.9
	T total	57	100
0.5		32	58.2
	1.0	14	25.5
	1.5	7	12.7
	2.0	2	3.6
	T total	55	100



8.

4.3

4-7

가

4

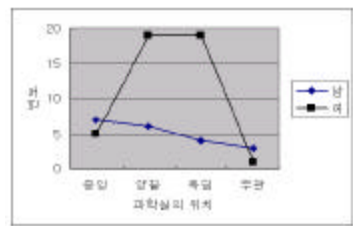
6

9

가

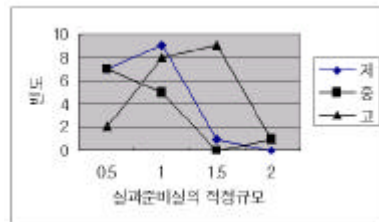
4-7.

	.186	.228	.066	.038
	.350	.016	.173	.099
	.479	.229	.675	.734
	.012	.244	.193	.071
	.795	.266	.208	.308
	.141	.283	.559	.176
	.161	.170	.853	.494
	.060	.642	.376	.007
	.339	.525	.516	.662
	.676	.209	.165	.209
	.026	.151	.564	.232
	.174	.029	.680	.052
	.728	.301	.346	.032
	.040	.153	.679	.033
	.456	.579	.045	.527
	.141	.233	.865	.022
	.062	.128	.059	.092
	.036	.231	.512	.439
	.011	.868	.689	.527
	.204	.311	.348	.000
	.180	.012	.224	.342
	.058	.131	.423	.779
	.034	.208	.154	.738
	.051	.281	.427	.060
	*	0.001	0.01	0.05

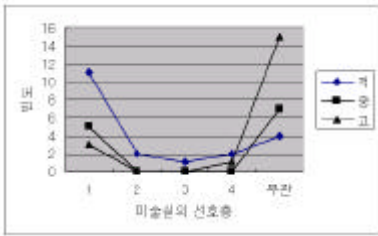


9.

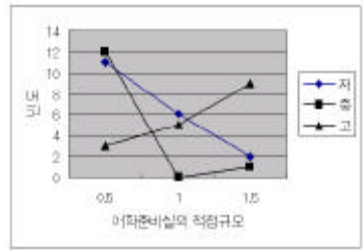
10



10.



11.

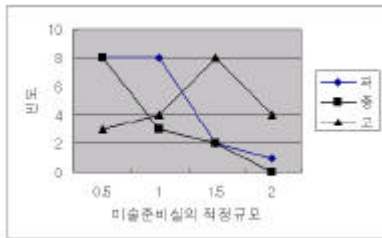


14.

11

14

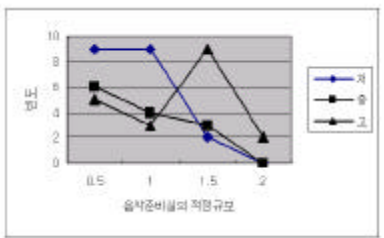
가



12.

5.

2



13.

1

가

12

13

가

가

1. 長倉康彦 , 4 , , 1995.10.
2. , 21 , 1997.9, 21 , 1999.11
3. , 7 , 2000.8
4. , 7 , 1999
5. 日本建築學會, 學校建築 計劃と設計, 技報堂, 1979.
6. 長倉康彦 外, 新建築學大系, 學校の設計, 彰國社, 1983.
7. 日本建築學會, 建築 · 都市計劃のための調査 · 分析方法, 井上書院, 1987.
8. AIA, Educational facilities, Washington,D.C., Rockport Publishers,Inc.1996

가

가