



- : , 가
- : 19,252m<sup>2</sup>
- : 36

2.

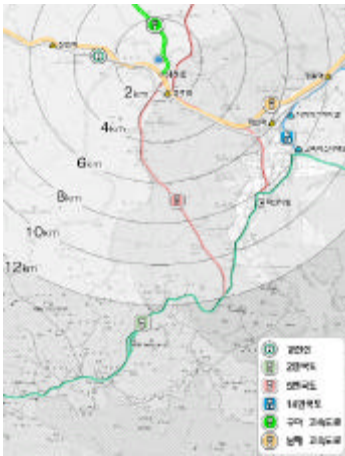
2.1

1994  
 가 , 가  
 가 . 가  
 가 8.5km,  
 5km  
 5  
 I.C.가  
 0.5km 가 가



1.

< 1 >.



1.



2.

5 , 가  
 가 가 , 가  
 2001 12 가 2,040 가 , 가  
 2 1,936 < 3,976 가  
 > . 가, 200m  
 가 570 m







80%

2)

가

80 84%

70%

3),

(36 / 70%/ 34 )

								( )	
1	2	3							
60	48	48	156	1.0			7		
24	24	12	60	1.0			3		
36	36	48	120	1.0			5		
48	48	36	132	1.0			6		
36	36	48	120	0.8	0.2	4	1		
36	48	48	132	0.4	0.6	2	4		
가	24	36	36	96	0.4	0.6	2	2	
	24	12	12	48	0.3	0.8		2	
	12	12	24	48	0.3	0.7		2	
	36	36	24	96	0.3	0.7	2		
	48	48	48	144	1.0		6		
	24	24	24	72	1.0		3		
	408	408	408	1,224			40	11	

가

가

가

1 가

4.3

7.5m × 9.0m , < 2>

<

2) , , 2001. 7, p .64

3) (

7 , 2001. 7, p.64) , 7 17

, 30 37 , 36 , 45 , 42 24 29 가

3>

3.

						(m <sup>2</sup> )				
						1 bay				
						67.5	2.0	67.5	7	472.50
						67.5	2.0	67.5	3	202.50
						67.5	2.0	67.5	5	337.50
						67.5	2.0	67.5	6	405.00
						67.5	2.0	67.5	4	270.00
						67.5	2.0	67.5	2	135.00
	가					67.5	2.0	67.5	2	135.00
						67.5	2.0	67.5	2	135.00
										2,092.50
						135.0	4.0	135.0	4	540.00
	가					135.0	4.0	135.0	2	270.00
						135.0	4.0	135.0	2	270.00
						135.0	4.0	135.0	2	270.00
	( )					135.0	4.0	135.0	1	135.00
						67.5	2.0	67.5	6	405.00
						67.5	2.0	67.5	3	202.50
						84.4	2.5	84.4	2	168.80
						135.0	4.0	135.0	2	270.00
										2,531.30
						168.8	5.0	168.8	1	168.80
						67.5	2.0	67.5	1	67.50
						67.5	2.0	67.5	1	67.50
						33.8	1.0	33.8	1	33.80
						67.5	2.0	67.5	1	67.50
						67.5	2.0	67.5	6	405.00
										810.10
						45.0	1	45.0	1	45.00
						67.5	2.0	67.5	1	67.50
						67.5	2.0	67.5	1	67.50
						33.8	1.0	33.8	1	33.80
						67.5	2.0	67.5	1	67.50
										281.30
						158.6	4	146.3	1	146.30
						100.3	3.0	101.3	1	101.30
						39.7	1.0	33.8	4	135.20
						83.5	2.5	84.4	1	84.40
						60.2	1	56.3	1	56.30
										523.50
						67.5	2.0	67.5	1	67.50
						37.1	1.0	33.8	4	135.20
						67.5	2.0	67.5	1	67.50
						67.5	2.0	67.5	1	67.50
										337.70
										6,576.40
										3,945.84
						675.0	20.0	675.0	1	675.00
						486.0	14.5	489.4	1	489.40
										1,164.40
										11,686.64
									1	4,350.00



D E A C

가

(security)

가

E , 가

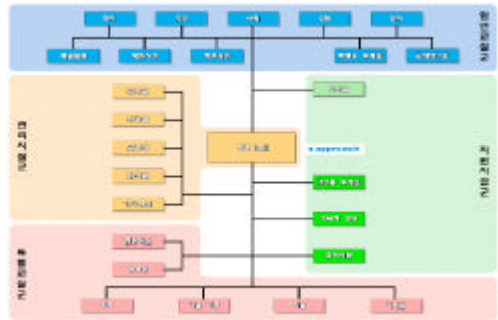
가 가

F ,

가

A ,

B , D 가



6. (ZONING)

4.4.2

5.

5.1 A

5.1.1

- : 3,115.4m<sup>2</sup>
- : 11,805.0m<sup>2</sup>
- : 4 5 , 1

가

가



3. A

가



4. A

		(m <sup>2</sup> )		
		67.50	6	405.00
		67.50	2	135.00
		67.50	5	337.50
		67.50	5	337.50
		67.50	3	202.50
		67.50	2	135.00
				1,552.50
		101.25	2	417.00
		107.25	2	417.00
	가	103.50	2	207.00
		103.50	2	207.00
		103.50	2	207.00
	( )	135.00	1	135.00
		67.50	5	337.50
		67.50	2	135.00
		135.00	2	270.00
		112.50	1	247.50
		135.00	1	247.50
				2,163.00
		274.50	1	274.50
		54.00	1	54.00
		67.50	1	67.50
		90.00	1	90.00
		67.50	6	405.00
				891.00
		58.50	1	58.50
		58.50	1	58.50
		67.50	1	67.50
		27.00	1	27.00
		67.50	1	67.50
		157.50	1	157.50
				436.50
		135.00	1	135.00
		67.50	1	67.50
		36.00	3	214.50
		35.50	3	214.50
		90.00	1	90.00
		72.00	1	72.00
				579.00
		45.00	1	45.00
		24.00	1	24.00
				69.00
		659.96	1	659.96
		487.12	1	487.12
				1,147.08
				6,838.08
				4,966.92
				11,805.00

5.1.2

A

가 가

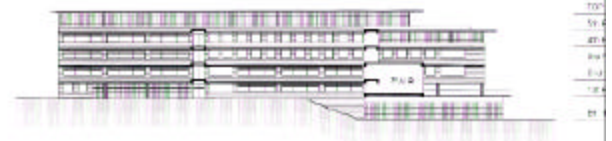
(semi-public)



7. A 1



8. A



9. A

, 7  
 ,  
 6 , 1 , 2 ,  
 1  
 가 , 1  
 (校舍)  
 가 가  
 4 , 5

5.2 B

5.2.1

- : 2,685.2m<sup>2</sup>
- : 12,171.4m<sup>2</sup>
- : 5 , 1



4. B

5. B		(m <sup>2</sup> )	
	65.61	7	463.32
	65.61	2	131.22
	65.61	5	328.05
	65.61	5	328.05
	65.61	4	262.44
	65.61	2	131.22
			1,644.30
	98.42	1	492.10
	98.42	4	
가	98.42	2	262.45
	65.61	1	
	131.22	2	262.44
	131.22	2	262.44
( )	131.22	1	131.22
	65.61	5	328.05
	65.61	3	196.83
	196.83	1	196.83
	131.22	2	262.44
			2,394.80
	208.98	1	208.98
	32.81	1	32.80
	32.81	1	32.80
	41.31	1	41.31
	69.66	5	348.30
			664.19
	65.61	1	65.61
	69.66	1	69.66
	69.66	1	69.66
	32.81	1	32.81
	69.66	1	69.66
	213.12	1	213.12
			520.52
	131.22	1	131.22
	98.42	1	98.42
	41.31	3	156.74
	32.81	1	
	41.31	1	41.31
	65.61	1	65.61
			493.30
	65.61	1	65.61
	32.81	3	98.42
	32.81	2	65.61
			229.64
	477.42	1	477.42
	477.42	1	477.42
			954.84
			6,901.59
			5,269.63
			12,171.22

5.2.2

B

A

가 .  
 ,  
 가 가  
 A 가

3 5  
 가 . 1  
 (校舍)  
 B , A  
 8.1 × 8.1m 2



10. B 1

5.3 C  
 5.3.1  
 - : 3,262.5m<sup>2</sup>  
 - : 12,129.9m<sup>2</sup>  
 - : 4 , 1



11. B



5. C



12. B

5.3.2 C 가

7 A 가

6. C

		(m <sup>2</sup> )		
		65.61	7	459.27
		65.61	3	196.83
		65.61	5	328.05
		65.61	6	393.66
		65.61	4	262.44
		65.61	3	196.83
				1,837.08
		89.91	1	
		131.22	2	596.97
		122.31	2	
가		114.82	2	360.86
		131.22	1	
		131.22	1	262.44
		131.22	1	
		131.22	1	262.44
( )		89.91	1	89.91
		65.61	5	328.05
		65.61	3	196.83
		88.29	1	
		163.62	1	439.02
		187.11	1	
		98.82	1	230.04
		131.22	1	
				2,766.56
		217.08	1	217.08
		40.50	1	40.50
		65.61	1	65.61
		65.61	1	65.61
				388.80
		65.61	1	65.61
		65.61	1	65.61
		89.91	1	89.91
		107.73	1	107.73
		167.22	1	167.22
				496.08
		131.22	1	131.22
		65.61	1	65.61
		88.29	2	88.29
		55.89	1	72.76
		16.87	1	
		65.61	1	65.61
				423.49
		65.61	1	65.61
		50.34	4	
		62.37	1	297.47
		16.87	2	
				363.08
		659.96	1	659.96
		482.04	1	482.04
				1,142.00
				7,417.09
				4,712.82
				12,129.91

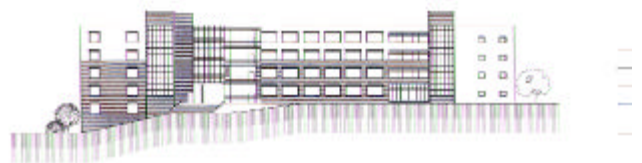
가 1

(校舍)

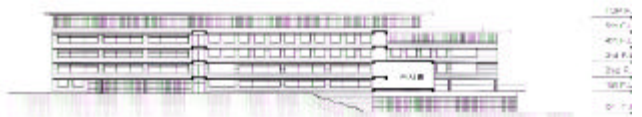
가 가 , 가 가



13. C 1



14. C



15. C

C , 7

2 4

가

1

(校舍)

가

( )

