

5

1.

가 () 30~70kg
 가 . 40
 60 60
 60 80

1) () , () 3 가 가

	50%
	70%
	90%
	50 90%

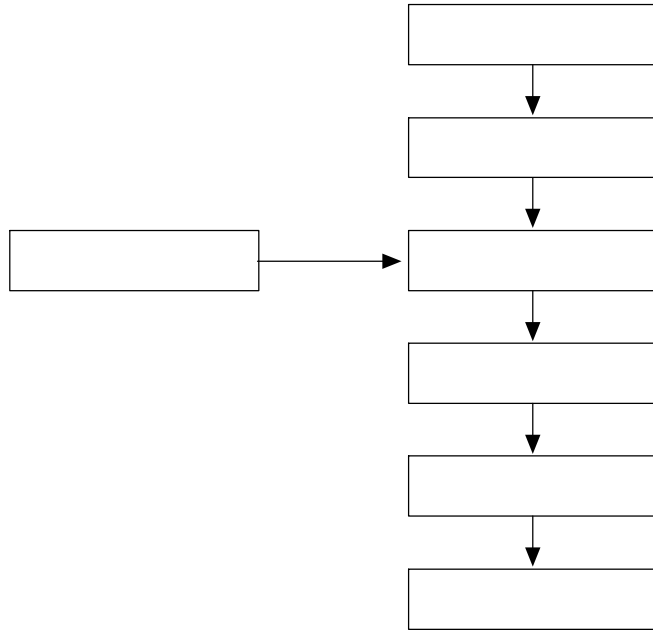
- a. 가
- b. 가 ,
- c.

2)

500kg

3)

. 80



< >

1000

가

(不二)
1988

10

11000 , 1000 , 4000 , 가
1000 , 15000 , 5000

< >

			(t/a)	* ()	
1			5000	+	
2			1000	+	
3			1500	+	
4			1000	+	
5			1000	+	
6			1000	+	

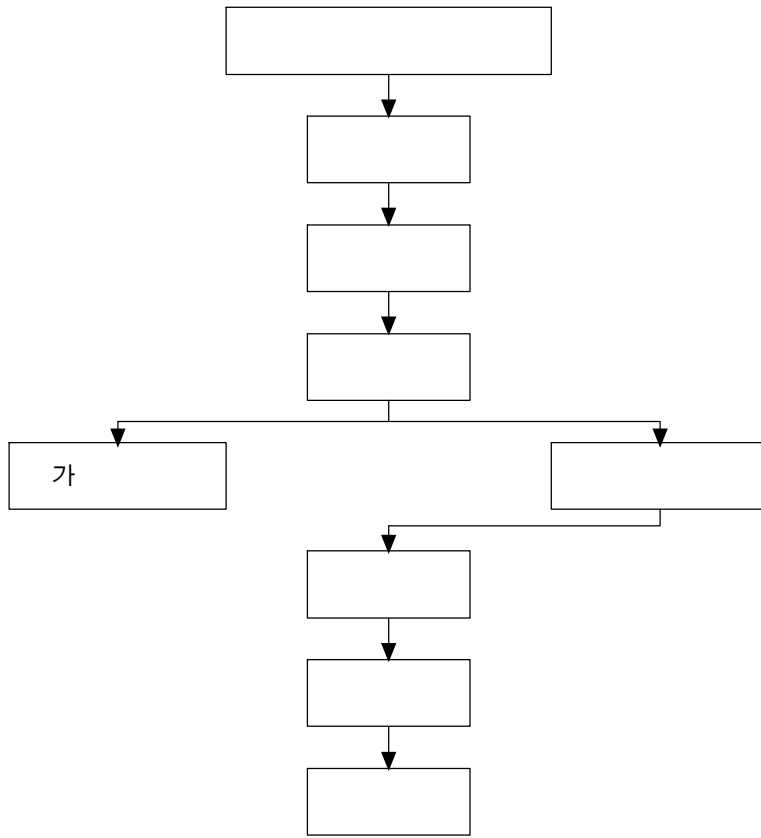
			(t/a)	*	
				()	
7			800	+	
8			3000	+	
9			1500	+	
10			1000	+	
11			800	+	
12			800	+	
13			1500	+	
14			1000	+	
15			3000	+	
16			1000	+	
17			1000	+	
18			2500	+	
19			1500	+	
20		가	3000	+	
21			2000	+	
22			1800	+	
23			1500	+	
24			3000	+	
25			4500	+	
26			1500	+	
27			1000	+	
28			1000	+	
29		7923	3000		
30		261	1500		
31			5000		
32			1500		

* : - , - , - , - , - , - , - , -

<

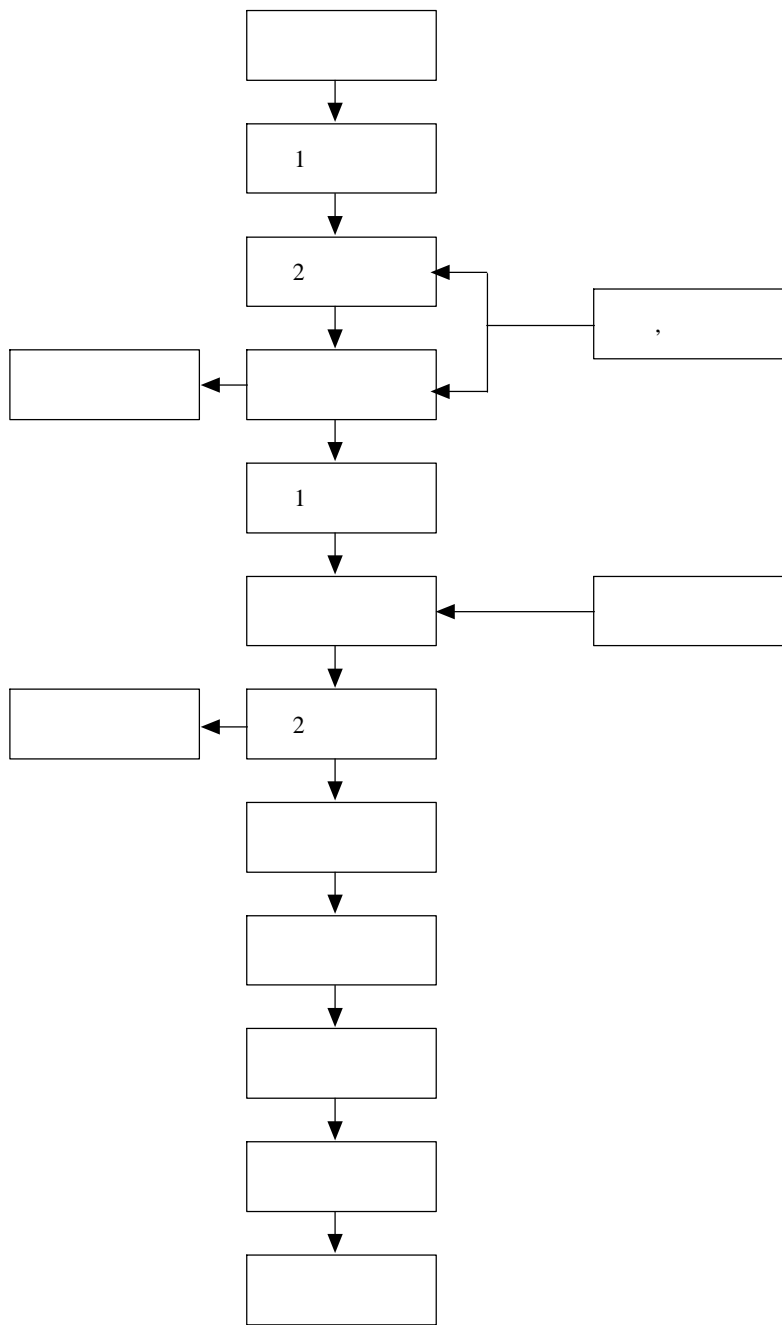
>

가 ()				(%)	
5000	1		2	7	4
3000	2		5	18	6
1500 2500	3		8	29	8
800 1000	4		13	46	13



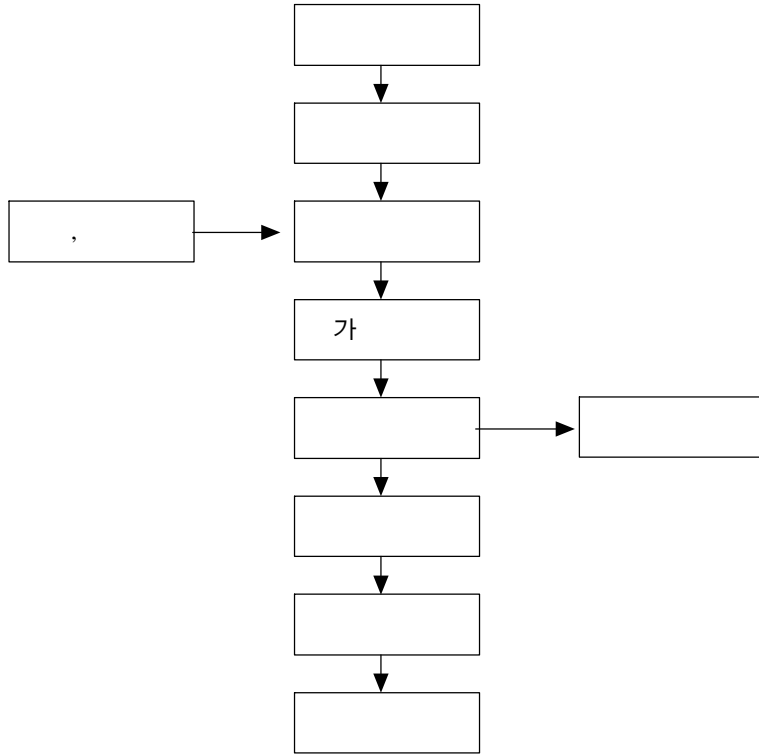
<

>



< ,

>



< >

< >

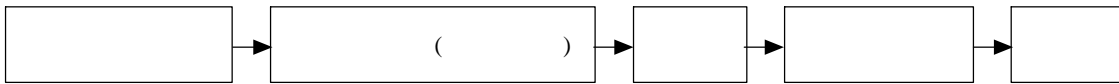
		B	E	F	H	M	S	T	Y
	%	4.7	4.2	5.4	5.3	5.1	5.1	4.8	4.3
	%N x 6.25	83.0	81.0	73.2	84.0	80.0	79.2	85.6	83.2
	%	4.0	3.7	6.1	4.3	5.4	6.2	5.8	4.4
pH가		7.2	7.1	7.1	7.3	7.6	7.8	7.6	7.2
	g/l	375.0	392.0	360.0	335.0	320.0	327.0	318.0	342.0
EA	%	90.0	80.0	88.0	87.0	88.0	61.0	86.0	75.0
ES	%	89.0	88.0	87.0	93.0	95.0	95.0	93.0	95.0
	%	98.0	94.0	99.0	98.0	95.0	82.0	96.0	98.0
	%	620.0	480.0	550.0	280.0	560.0	360.0	360.0	580.0
	g/cm ²	111.0	184.0	210.0	180.0	730.0	111.0	67.6	137.0

- a. 가 200mesh
- b. 가
- c. 가
- d. 가
- e. 가

2.

가 . 1
 35%
 37% . 2
 lipoprotein , , , 40%

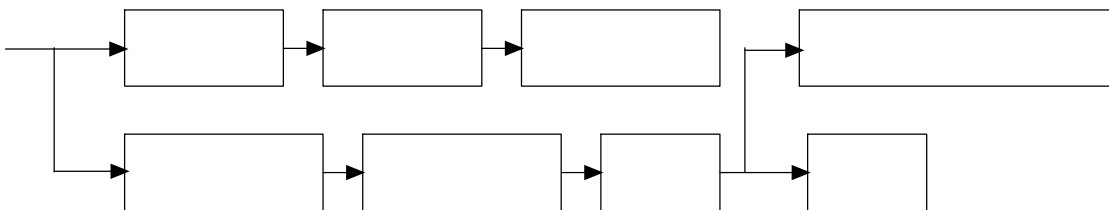
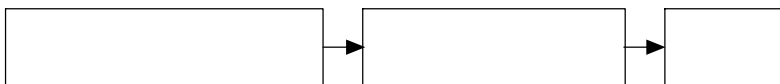
NSI ;

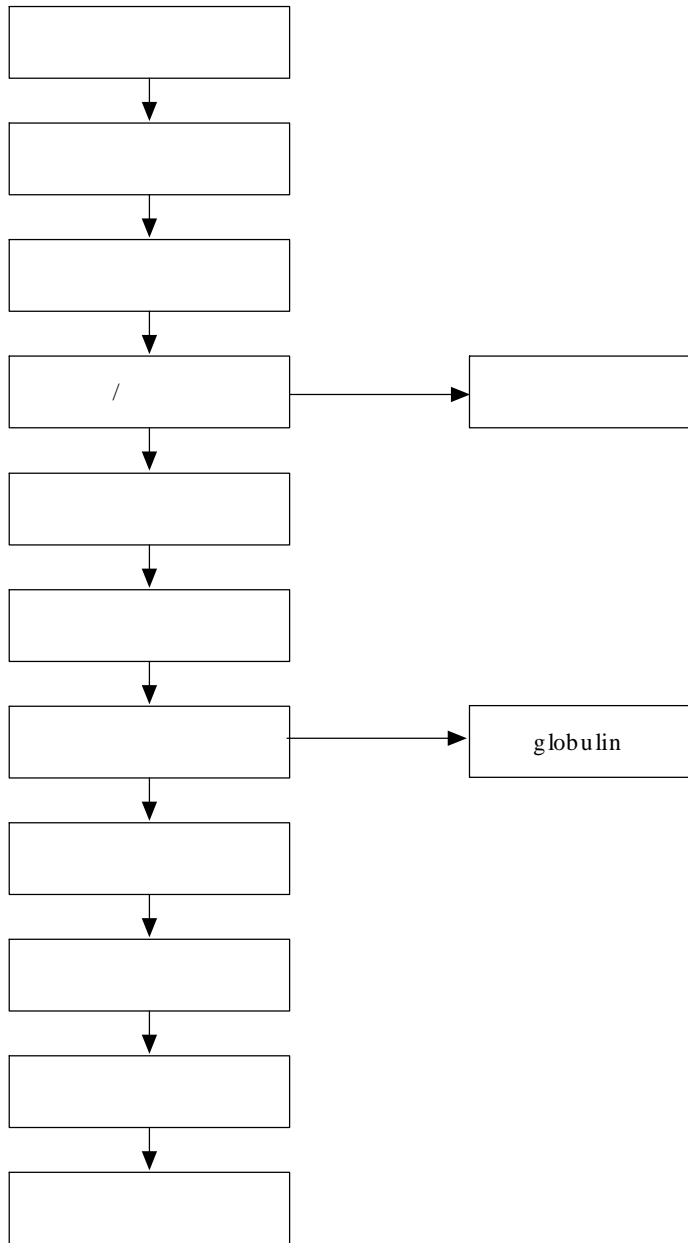


NSI ;



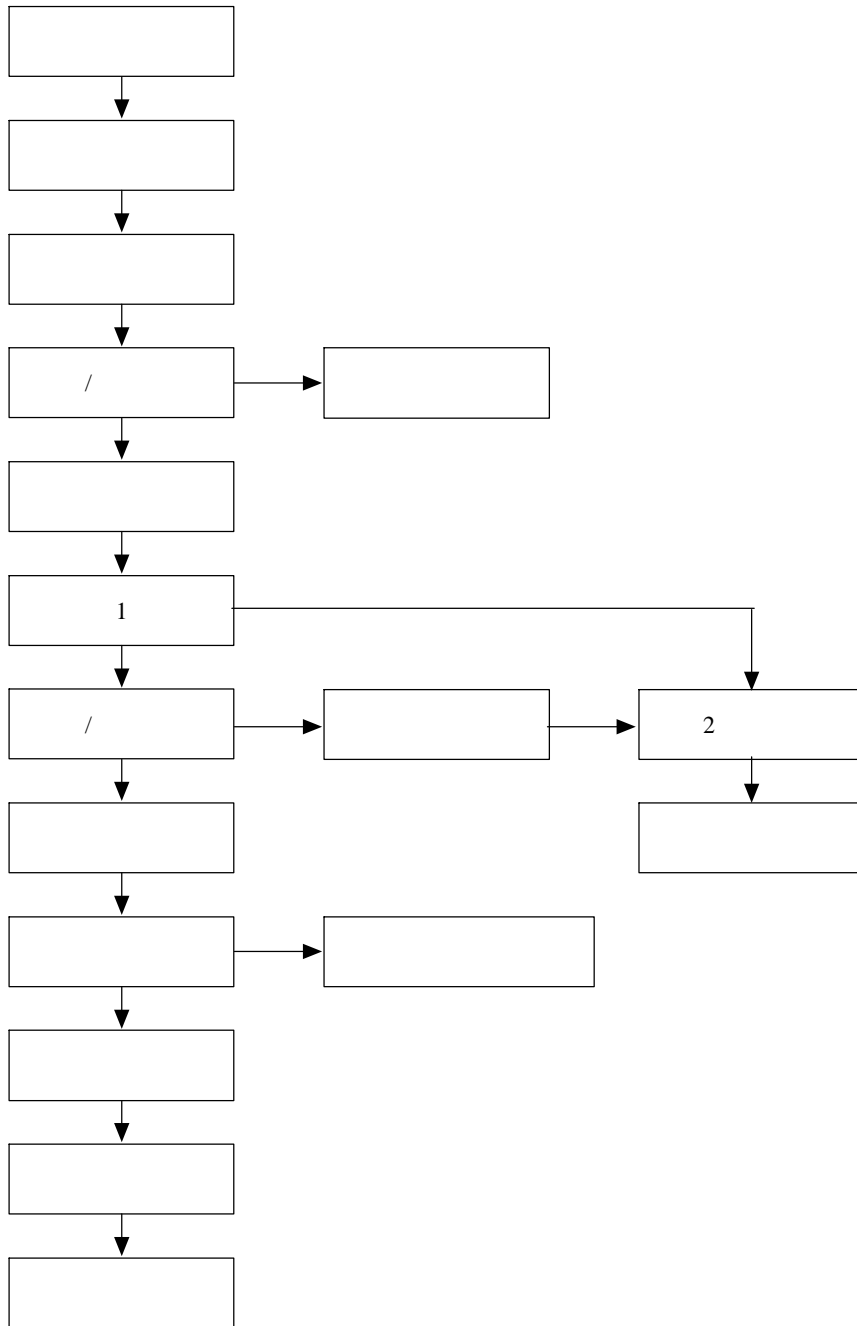
:





<

>



<

>

가

가

가

2

가

가

가

가

가

<

>

		NaOH	CaO
		HCl	H ₂ PO ₄
		H ₂ O ₂ 가	H ₂ O ₂ 가
	(%)	400 600	800 1000
	(保油性)(%)	220 250	250 300
	(g)	100 500	800 1100
	(mm)	4 8	11 14
	(pH 8.5 9)	32.56	32.81
		Na	Ca, P

35 , 28 , 15 12

가 .

(吸油性) . 2 가

가

가

가 6.52% 가 46.79% . 11S가 가

11S . 11S 40.92%, 가 74.39% .

가

가 7S 11S 7S

aspartic acid 가 가

가 가 2S

가 가

가 가

가 가

(30~50)

가

가

furufural

2)

dimethyl- sulfide, thiol, 가 5000

3.)

1) (1)

- - ,
- , -
- , -
- - (吸油性),

(2)

- Merapto
 -
 -
 -
- 1990 < : 2001.9.3 ~ 9.7,
- - Sodium Tripoly Phosphate “The International Seminar of Soybean Processing Technology” (pH 7~9), (pH > 9) () 가 1992 . >

