

# 尙州 城東初等學教 新築 基本計劃設計 研究

A Study on the Schematic Design for Sungdong Elementary School

金 炯 宇\*

Kim, Hyung-Woo

裴 是 花\*\*

Bae, Si-Hwa

1.

1.1

OECD가

1.2

가

18,970m<sup>2</sup>

5

74

30

(旧邑域)

가

4 가

1907

1949

가

가

6 7

가

\*

\*\*

1.3

- 1.3.1 : (2)
- 1.3.2 : 2001.8.17 2001.10.5 (50 ) (1,058m) · (762m)
- 1.3.3 : (가 ) (933m), (793m), (763m) (828m)
- : 74 , (東流)
- : 18,970m<sup>2</sup>
- : 5 30 가
- : 1,050 ( 35 )
- : 7

2.1.3

2.

(1)

2.1

- 2.1.1 12.3 , 1 - 3.4 , 8 , 26.4 , 2000 1 12 - 5.4 4.9 , 7 8 9 28.1 가 1,156mm , 4 9 86%

가

2- 1

1,254.96km<sup>2</sup>, 12 7,266 (2000 ) , 48.3km, 49.0 km , 2001 1 17 6 , 475 , 1,999

	1	2	3	4	5	6	7	8	9	10	11	12
	-0.8	1.0	5.5	12.6	17.1	21.7	23.1	23.8	21.1	12.3	6.4	0.2
	-115	-13.8	-5.6	-2.0	7.0	12.0	14.3	17.2	10.9	-1.6	-6.5	-11.4
	11.2	12.7	17.7	28.4	28.8	34.5	32.0	34.3	31.3	24.1	19.4	12.4
mm	0.8	7.8	79.1	121.4	131.7	206.5	232.5	325.0	405.0	119.0	15.0	8.0

2.1.2

(1)

(2)

2-2

(小白山塊)

가

(陸塊)

m/s	1	2	3	4	5	6	7	8	9	10	11	12
	2.6	2.7	1.8	2.1	1.7	1.2	1.0	0.8	0.8	1.2	1.6	2.0
	9.9	9.7	9.4	10.1	11.1	6.8	7.4	10.7	6.3	8.9	11.3	12.2

가

가

< 2-2>

1.625m/s,



(2)

가

4

6

: 55dB

가

: 65dB

1999

563.743km

437.583km,

78%

가

가

25

2.3.2

2,024.7mm

1998



2-3

1)

(1)

가

2.3.3

가

가

가

(2)

2 ( )

가

8M

15M



2-4

< 2-4 >

가

(2 5km)

가

(3)

2-3> #1 #2

<

43

가 53dB(#1 ) 42dB(#2 )

4

( )

가

1)

3.

3.1 7

2000 7  
1 7  
1

3-1 7


3.2

가  
가 가

4.

4.1

- 1)
- 2)
- 3)
- 4)
- 5)

4.2

4.2.1

30

4-1

	600	601 1,800	1,801	
(m <sup>2</sup> )	3,000(m <sup>2</sup> )	1,800+2N(m <sup>2</sup> )	3,600+N(m <sup>2</sup> )	3,900m <sup>2</sup>

\*N

\*

30

35

4-2

	240	241 960	961	1,050
	7N(m <sup>2</sup> )	720+4N(m <sup>2</sup> )	1,680+3N(m <sup>2</sup> )	4,830m <sup>2</sup>

5.

5.1

가

가

8m 가

< 5-2>

15m

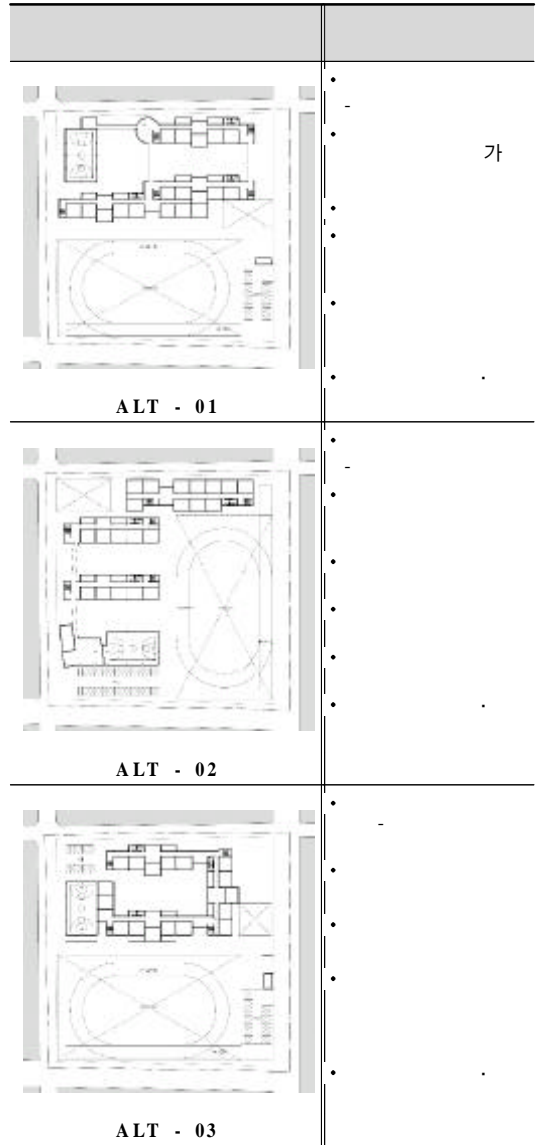
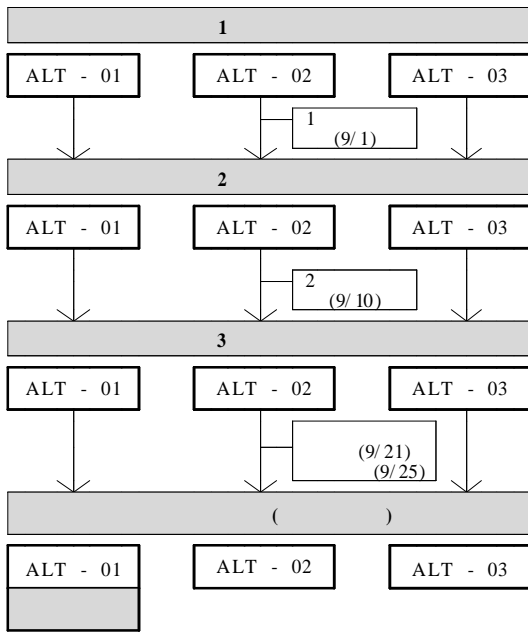
가

5-2 1

가

### 5.2

5-1



### 5.3

5.3.2 2

5.3.1 1

2001 9 1 1




1 (ALT)

, 1




가

2 < 5-3>

3 2

 <p>ALT - 01</p>	<p>1, 2</p>
 <p>ALT - 02</p>	<p>1, 2</p>
 <p>ALT - 03</p>	<p>1, 2</p>

5-4 3

 <p>ALT - 01</p>	
 <p>ALT - 02</p>	
 <p>ALT - 03</p>	

5.3.3 3

2001 9 10

, 2

2

3

< 5-4 >

5.4

2001 9 21

9 25

5.4.1

ALT - 01

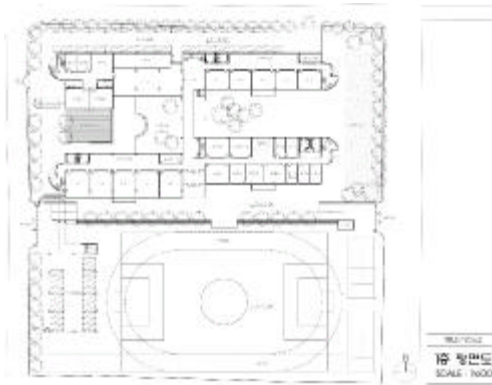
(1)

5-5 ALT-01

•	18,970.00㎡(5738.43 )
•	4,515.43㎡(1365.92 )
•	10,182.75㎡(3080.28 )
•	23.80%
•	53.68%
•	3 , 1
•	48 ( :34 )



5-1 ALT-01



5-2 ALT-01



5-3 ALT-01

(2)

가 ,

가

가

가 , 1-3 ,

4-6 , 4 가

3 가

가

5 ,

가

3 1,2

가

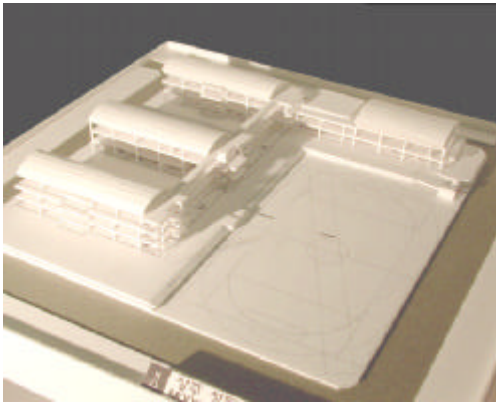


5.4.2 ALT - 02

(1)

5-6 ALT-02

•	18,970.00㎡
•	4,037.23㎡
•	9,835.96㎡ ( , )
•	21.28%
•	51.85%
•	3 , 1
•	44 ( :33 )



5-4 ALT-02



5-5 ALT-02



남측 정면도 (SAL-020)



북측 정면도 (SAL-020)

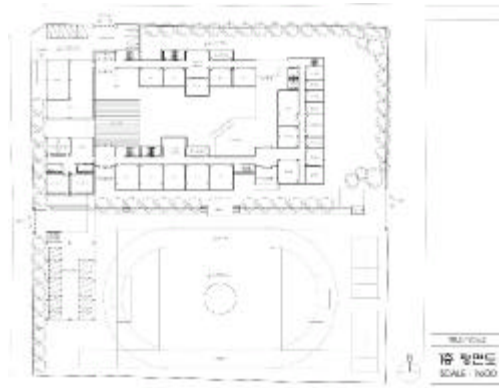
5-6 ALT-02

(2)

- 
- 
- , 1-3 , 4-6
- 3 3
- 가 3
- 
- 
- 
- 
-

表是花

- 가
- 
- 
- 가



5-8 ALT-03

5.4.3 ALT-03

(1)

5-7 ALT-03

•	18,970.00㎡
•	6,069.90㎡
•	9,201.81㎡ ( , )
•	32.00%
•	48.51%
•	3 , 1
•	33 ( :31 )



남쪽 입면도 (SCALE 1:500)

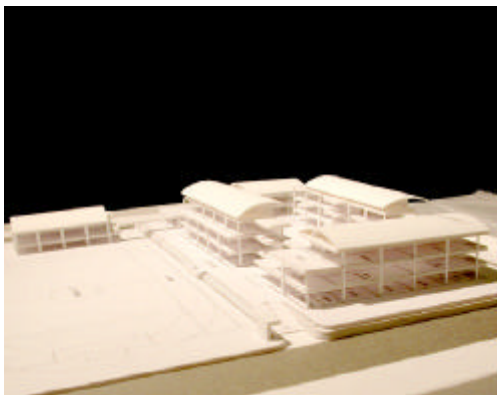


서쪽 입면도 (SCALE 1:500)

5-9 ALT-03

(2)

- 가
- 
- 
- ( , )
- 가
- 
- 가
- 
- 3



5-7 ALT-03

