

初等學校 計劃設計研究

A Schematic Design Study for Dangdong Elementary School in Kunpo

金鍾錫* 姜泰錫**
Kim, Jong-Seok Kang, Tae-Suck

1.

1.1.

21

가

1.2

1)

7

7

Open

Education Method가

2)

3)

가

1.3

1.3.1

2001 8 8
9 26 50

2001

1.3.2

, 21

7

22 (2

)

: 11,522.3m²

*

**

- : 42
- : 1470 (35)
- : 7

4m 8m

2.

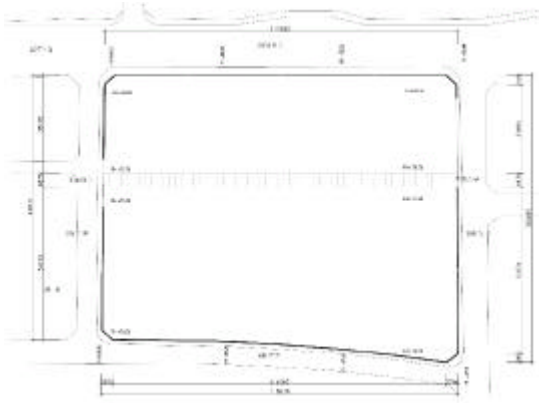
) 22 (2 가



2-3

가

.(2-1, 2-2)



2-1



2-2

2-2

3.

3.1

1)

가 67m 84m

2)

3)

4)

5)

6) 가

7)

8)

3.2

1)

2)

3)

가

3.3

- 1) 2
- 2) , 가
- 3)
- 4)
- 5) , ,
- 6)
- 7)

3.4

- 1)
- 2) 4m 가
- 3)
- 4)
- 5)
- 6)

3.5

- 1) 3.6m, 2.6m
- 2)
- 3)

3.6

- 1)
- 2)
- 3.7
- 1)
- 2) 가
- 3)
- 4)

4.

4.1

4.1.1

- 1) 20m 8m 6m 9m
- 2) 40m 2.5m 3m
- 3) 가

(15000m² 16000m²),
 approach가

4.1.2

1)

2)

3) approach가

4) , ()

가

4.1.3

1)

8.1m×8.1m module
 3m

2)

zone,

zone, zone

3)

ramp

()

EV

4)

5)

space

6)

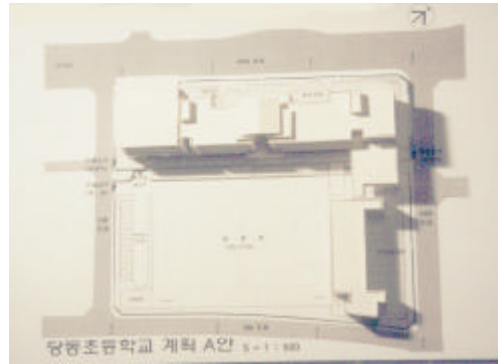
가

1, 2

8)

1

4.2



4-1 A

		42	65.61	2755.6
		42	5.67	238.14
				2993.8
		3	98.415	295.25
	1	2	98.415	196.83
		2	98.415	196.83
		2	98.415	196.83
		1	196.83	196.83
		1	98.415	98.415
	가	1	98.415	98.415
				1279.4
		1	233.28	233.28 (+)
		1	196.83	196.83
	()	1	564.975	564.98
		1	65.61	65.61
				1060.7
		1	32.805	32.805
		1	65.61	65.61
		12	32.805	393.66
		1	32.805	32.805
		1	32.805	32.805
		1	32.805	32.805
		1	32.805	32.805
		1	32.805	32.805
		1	65.61	65.61
		2	32.805	65.61
		1	32.805	32.805
		1	65.61	65.61
		15	4.4	66
		3	23.94	71.82
		1	32.805	32.805
		1	32.805	32.805
		1	773.68	773.68
		1	154.71	154.71
				1984.8
				7318.6
				4978.5
				12297
		1	155.52	155.52
	/	1	343.845	343.85
				499.37
		147		12796

4-1 A



4-2 B

	42	65.61	2755.6
	42	16	672
			3427.62
	3	98.415	295.245
1	2	131.22	262.44
	2	98.415	196.83
	2	98.415	196.83
	1	128	128
	1	98.415	98.415
가	1	98.415	98.415
			1276.18
	1	131.22	131.22
	1	131.22	131.22
()	1	571.35	571.35
	1	65.61	65.61
			899.4
	1	32.805	32.805
	1	65.61	65.61
	12	32.805	393.66
	1	32.805	32.805
	1	32.805	32.805
	1	32.805	32.805
	1	16.4025	16.4025
	1	65.61	65.61
	2	32.805	65.61
/			
	1	32.805	32.805
	1	32.805	32.805
1	4	32.805	131.22
2	5	4.4	22
	3	31.11	93.33
	1	32.805	32.805
	1	32.805	32.805
1	10	41.82	418.2
2	5	56.24	281.2
	5	21.87	109.35
			1924.63
			7527.83
			5950.46
			13478.3
/			
	1	571.35	571.35
			571.35
			14049.6
	158		

4-2 B



4-3 C

	42	65.61	2755.6
	1	8	70.4
	2	5	40.56
			202.8
			3318.8
	3	91.25	273.75
1	2	91.25	182.5
	2	91.25	182.5
	2	131.22	262.44
	1	91.25	91.25
	1	91.25	91.25
가	1	91.25	91.25
			1174.9
	1	182.5	182.5
	1	182.5	182.5
()	1	585	585
	1	65.61	65.61
			1015.6
	1	32.805	32.805
	1	65.61	65.61
	12	32.805	393.66
	1	32.805	32.805
	1	32.805	32.805
	1	32.805	32.805
	1	32.805	32.805
	1	32.805	32.805
	1	65.61	65.61
	2	35.2	70.4
/			
	1	32.805	32.805
	1	54.27	54.27
	15	4.4	66
	4	32.805	131.22
	1	32.805	32.805
	15	56.24	843.6
	5	21.06	105.3
			2025.3
			7534.7
			5573.9
			13109
/			
	1	585	585
			585
	135		13694

4-3 C

A

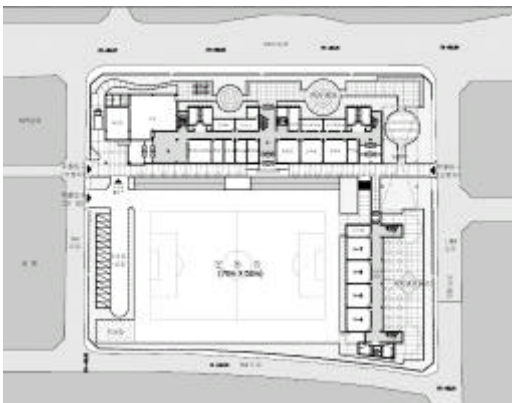
1)

2)

3)

4)

5)



4-1 A 1



4-2 A



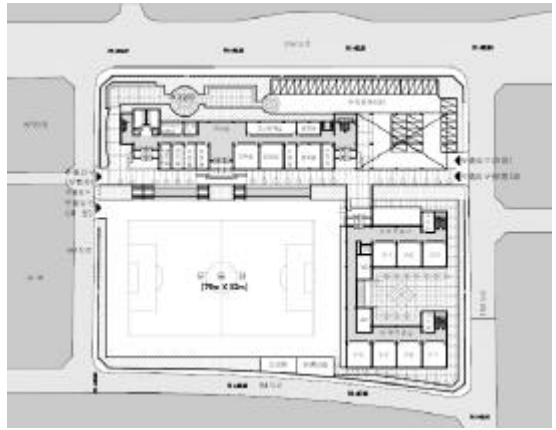
4-3 A

4.2.2 B

1)

2)

3)



4-4 B 1



4-5 B

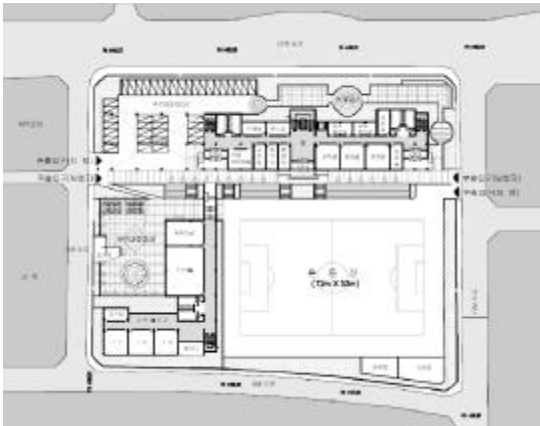


4-6 B

4.2.3 C

1)

2)



4-7 C 1



4-8 C



4-9 C

5.

A

가

42

(11000 12000m²)

B

infrastructure

가

가

가

가

C

1, 2

가