

# 第7次 教育過程

# 研究

- 龜尾市 龜尾高等學校 中心 -

A Study on the Renovation to the Seventh of Curriculum

- Focused on the Kumi high school in Kumi City -

康恩珠\*      鄭俶永\*\*      吳德成\*\*\*  
Kang, Eun-Ju    Jeong, Sook-Young    Oh, Deog-Seong

1.

1.1

1980 5 , 2002 7  
가  
, 1981 3 1  
1995  
1.2  
2000 11  
25 1976 12 30  
24 1980 5  
2000 1980  
, 1976  
2002  
1) 7  
2)  
3)

---

\*  
\*\*  
\*\*\*

4) 7

5) 3) 2)

6) .

7) , , , ,

2. 7 ?( , ), ‘ ?( , , ), ‘ 가

, 1 (7 ) , 1 (10 )

2 3 (11 12 ) 4)

, “ + ” 가 7

2.1 7 1) 가 .

1 1 10 , 가 가, 가, 가, 가

2 3  
2 3

2)

3) ,

4) , ,

5) , , , , , , , ,

1) , “ 7 ” , 1999, pp.22-25

2-1. 7

7					
			10	11	12
		( )			
		( )			

가 가

가

5

2.2 7

2002

1  
7

6).

4가

가

2-1

2-1

2.3 7

1)

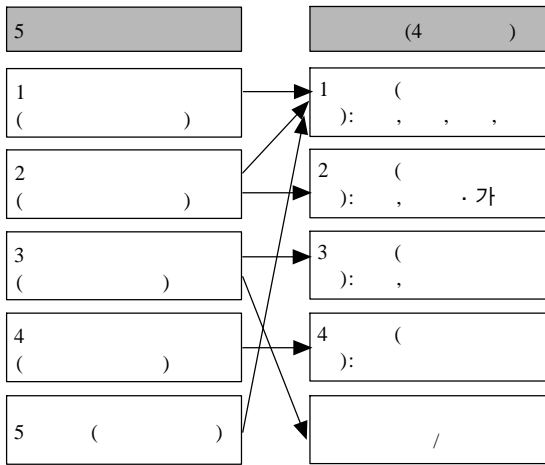
가

5

4

. 5

6) (i)", 7, , 1999, p.46



2)

70-90 , 10-20 , 30-40

가

3)

가 , A/V

가

4)

. 7

가

5)

3.

3.1  
1)

가  
가

가

가

, 1980  
가

2001

3-1.

	가								
		1	2	3		1	2	3	
	24	8	3 5	2 6	24	392	417	417	1226

3-2.

	1	1	39	53	1	4	.	.		9	62
	.	.	12		1	.	2	1			

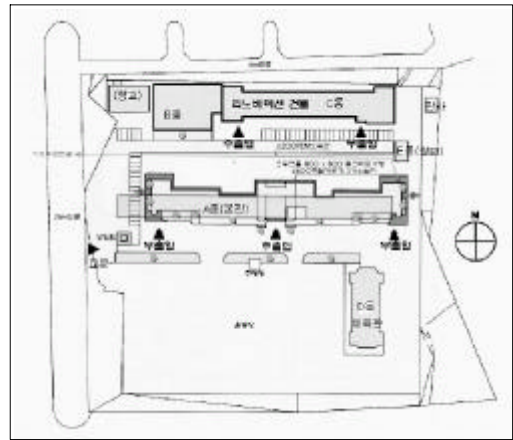
- 2)
- : 1 600
  - : 28,854.00 m<sup>2</sup>
  - , :
  - :
  - : (1976.12.30)
  - : (2000. 12. 7 )

- 3)
- < 3-3> A, B , C

3-3. (A, B )

			30	2025		
			1	135		
			1	162		
			1	135		
			1	108		
			1	135		
			4	459		
			39	3159		
					1	81
					1	41.85
	3			121.5		
	1			33.75		
	6			278.1		
					1	202.5
			1	50.63		
			1	58.73		
			3	117.45		
			1	32.4		
			1	33.75		
			1	33.75		
			1	32.4		
			11	561.61		
					1	67.5
					2( , )	50.63
	2( , )			50.63		
	( )			2 81.0		
	( )			10 378		
	17			627.76		
	73			4626.47		

- 4)
- < 3-1> 5 가
- , A , B , C , D , E ,
- 가 가 .
- 1 , .
- 50cm 가 .



3-1.

- 5)
- (1)
- 3-5. B C

	B	C	
	4	3	B
	2,503.12m <sup>2</sup>	2,782.50m <sup>2</sup>	
			C
	20	24	
	1980 5	1976 12	

- (2)
- B 가 20 가 , C

2, 3 3.2.2

, C 2002 7

▪ C 2000 3 2가 , 7 , , 1

1200

1) 7 2 7

2 , 3 1995

가 , ,

3-6.

		70-90		2-3
		90-120		
		30-40		가
		10-20		가
		1-4		가

2000 12 , ,

C

3.2

3.2.1 7)

, , 3가 < 3-5>

3-5.

	가 , 가 가 가
	가
	7
	가
	가
	가
	가

가 가 , , , , , , 14 가 가 , 가 ,

5

7) 2 , “ ” , 8 2 , 5 2001, pp6-7

3.3

3.3.1

가

1)

▪ B : 2,503.12m<sup>2</sup>

▪ C : 2,782.50m<sup>2</sup>

▪ : 5,285.62m<sup>2</sup>

: 2000 12

(A )

(m<sup>2</sup>) 70

가

가

가

가

▪ : 5,285.62m<sup>2</sup> × 700,000/ m<sup>2</sup> = 37

2)

가

가

▪ 가 : 1

▪ : 6 5

▪ : 4 5

▪ : 2

▪ : 1

▪ : 15

3)

37 ,

15

, 22

2)

가 가

2000 3

, C 1

1250

3.3.2

8)9)

< 3-7>

1)

가

130 150kgf/ cm<sup>2</sup>

180kgf/ cm<sup>2</sup>

3-4

81m<sup>2</sup> 15  
1250

가

8) 가 6 , “ ” , 1997

9) 2 , op. cit., pp8- 10

가 . 4.

(ASTM) 가 -200mV (+) 4.1  
90% 1)

1% , 2002

7

1 1 2mm

가

2) 가 20 , A  
24 30  
, < 3-7> , 7  
, 가  
가 , 가  
3-7 . B, C 7

			가
		90%	
			가
		가	
			가
			가
			가

7

7

가 20 , A  
24 30  
, < 3-7> , 7  
, 가  
가 , 가  
3-7 . B, C 7

7  
가

2)  
7

3)  
(1)  
< 3- 1> B 4 C 3  
A , B C  
(2)  
B  
C



4-1.

1		( , )	A,B	가
2		, , ,	B,C	
3	가	, ,	B,C	
4		, , ,	B,C	
5		, , ,	B,C	
6			B,C	가 1300
7		, , , ,	B,C	가
8			A,B	

, C  
 , , , ,  
 , , , ,  
 .

4-2.

B	.		
	.		
	( , , , , , , )		
	.		
	.		
C	.		
	.		
	( )		
	.		
	( , , , , , , )		
	.		
	.		
	.		

(U + V ) , A

. 10)

4.2. 11)

1)1

4-3. 1 (m, m<sup>2</sup>)

1 B			12.0 × 9.0=108
			6.0 × 4.5=27
			6.0 × 9.0=54
			6.0 × 4.5=27
			15.0 × 9.0=135
			6.0 × 4.5=27
			6.0 × 9.0=54
			6.0 × 4.5=27
			3.0 × 9.0=27
			486
			6.0 × 7.5=45
			4.5 × 9.0=40.5
			4.5 × 5.0=22.5
1 C			36.0 × 10.0=360
			9.0 × 7.6=68.4
			18.0 × 7.0=126
			49.5 × 3.3=163.35
			27.0 × 7.0=189
			9.0 × 10.0=90
			9.0 × 5.0=45
		A : 2	(4.5 × 2.6) × 2=23.4
		B : 1	4.5 × 7.6=34.2
			1207.35
		1693.35	

2)4

4-4. 4 (m, m<sup>2</sup>)

4 (B )			12.0 × 9.0=108
			9.0 × 9.0=81
			9.0 × 9.0=81
			12.0 × 9.0=108
		A	6.0 × 9.0=54
		B	3.0 × 9.0=27
			3.0 × 9.0=27
			486
		5278.5	

10) 4 , “ ”, , 1998, pp.295- 299

11) 4 , op. cit., pp.293- 335

4-5. 2 (m, m<sup>2</sup>)

2 (B)	2		12.0 × 9.0=108	70-120
			9.0 × 9.0=81	30-40
	3		18.0 × 9.0=162	70-120
			9.0 × 9.0=81	30-40
	2		(3.0 × 9.0) × 2=54	
		486		
2 (C)	1		13.5 × 10.9=147.15	70-90
			9.0 × 10.9=98.1	30-40
		9.0 × 10.0=90	10-20	
		1-4		
	5		(4.5 × 7.6) × 5=171	
			22.5 × 3.3=74.25	
			9.0 × 15.0=135	
	A :2		(4.5 × 2.6) × 2=23.4	
		B :1		4.5 × 7.6=34.2
				773.1
		1259.1		

3)3

4-6. 3 (m, m<sup>2</sup>)

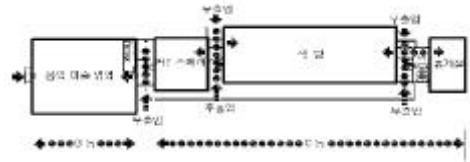
3 (B)	가		12.0 × 9.0=108	
			3.0 × 9.0=27	
	2		(9.0 × 9.0) × 2=162	
			15.0 × 9.0=135	
			3.0 × 9.0=27	
			3.0 × 9.0=27	
			486	
3 (C)			9.0 × 10.0=90	
			4.5 × 9.4=42.3	
			4.5 × 9.4=42.3	
			4.5 × 9.4=42.3	
			22.5 × 7.6=171	
			4.5 × 7.6=34.2	
			27.0 × 3.3=89.1	
			9.0 × 15.0=135	
	A :2		(4.5 × 2.6) × 2=23.4	
		B		4.5 × 7.6=34.2
			703.8	
		1189.8		

4.3

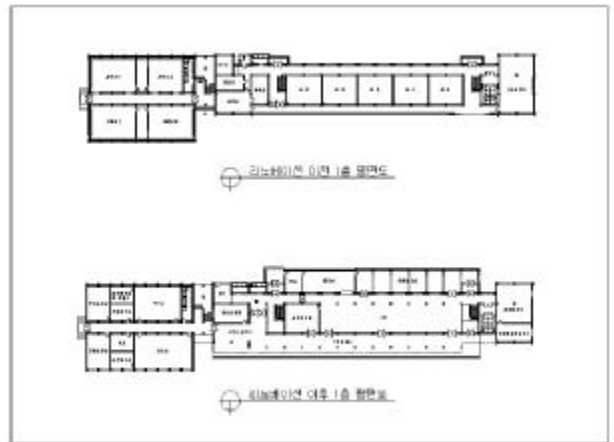
12)13)14)

4.3.1

1) 1



4-1. 1



가 가 15) B C 16) B C

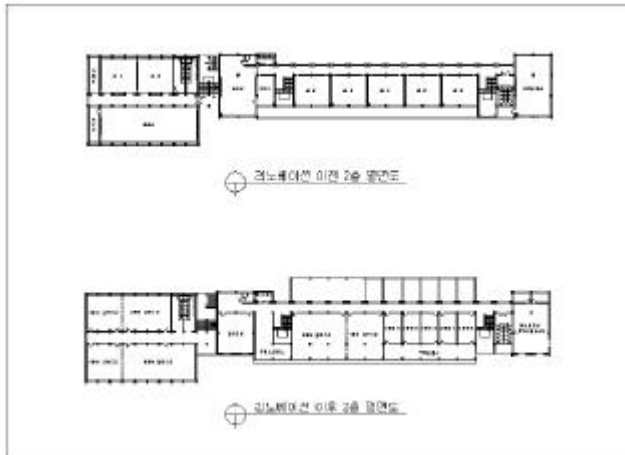
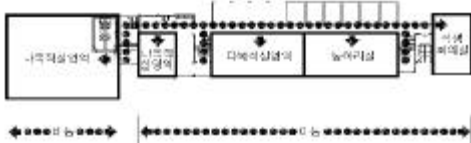
12) 長倉康彦, “ ”, 1995, pp. 69-108  
 13) “ 7 ”, , 1999, pp57-74  
 14) “ 7 ”, , pp75-91  
 15) “ 가 ”, 가 “ ”, TV “ ”, “ ”, , 1989 , p15  
 16) “ ”, “ ”, 長倉康彦, op. cit., p73

가 , , , , 가  
 가  
 3.3m  
 3) 3  
 3  
 LAN  
 21 가  
 B C  
 1  
 4.5m ×  
 3.3m  
 4.5m × 7.0m

2) 2

가

가 ”17)



(sliding)  
 C  
 3.3m

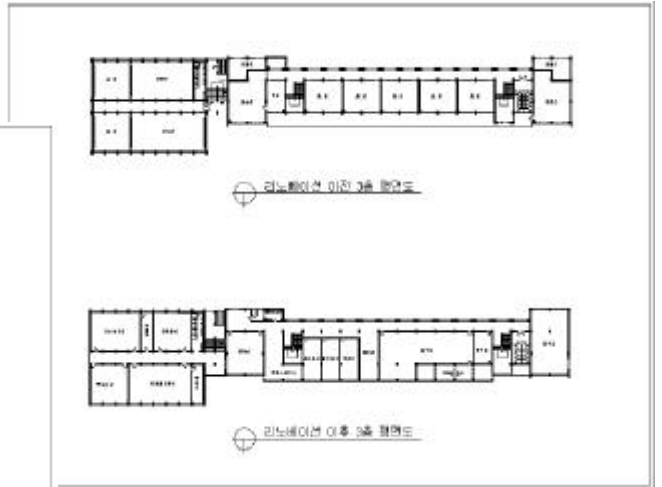
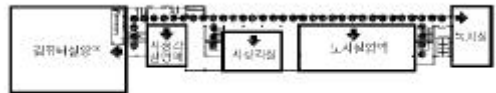
3) 3  
3

18)

LAN  
21 가

▪ B  
 B , 가 , ( ) ,

▪ C



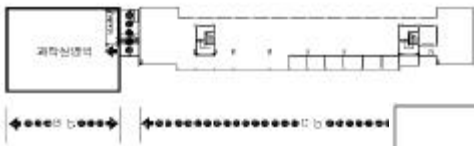
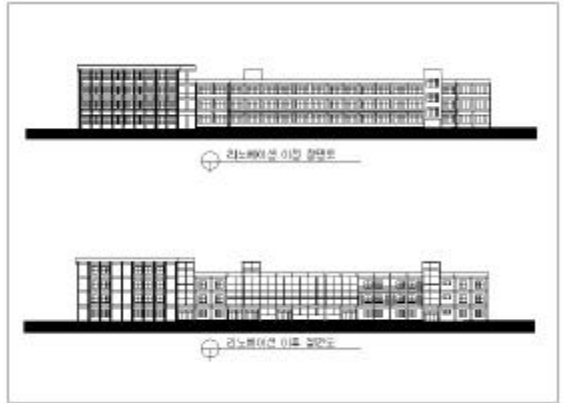
18)

17)

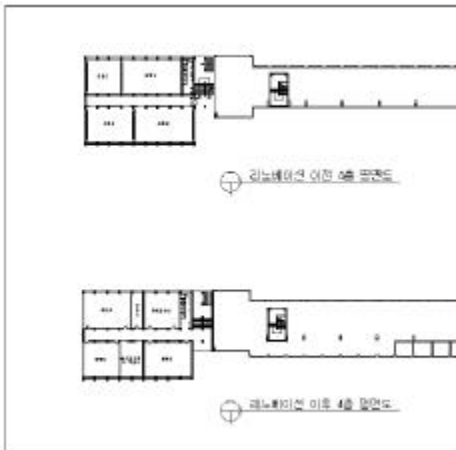
4 “ , 1994, pp. 155- 162 ” ,

4) 4  
4.5m × 9.4m  
3.3m

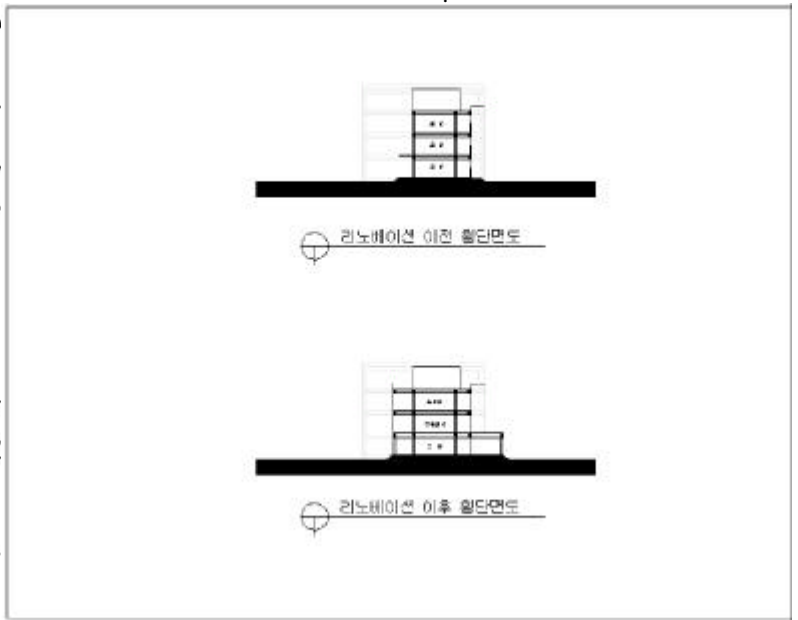
C



4-4. 4



4-4. 2



(dryvit)

(Solid)

(Void)

가

C 1

, 2 3

( , , )

, B  
 , C  
 .  
 , 1  
 가 B C  
 , 2  
 , 3  
 3 LAN  
 , 4 B .

■

- 1) , “ 7 ”, , 1999
- 2) 2 , “ ”, , 2001
- 3) , “ 7 ”, , 1999
- 4) , “ 7 ”, , 1999
- 1999
- 5) 6 , “ 가 ”, , 1997
- 6) 4 , “ ”, , 1994

■

- 1)長倉康彦 , “ ”, 1995
- 2) 4 , “ ”, , 1998
- 3) , “ ”, 2000