

2000

가 2 2000

2000 1 12 32,088 10 가

1960 , 1970 71.9 , 가 25,060(78.1%) 2).

가)

1989 90 1993 94 (Fig. 1)¹⁾. 2000 1. 가 6

1994 6 4 가 6

3 1 10 12 가 가

9 3,470 8 가 가

가 2000 89.2%(28,618) (Fig. 2).

가 2000

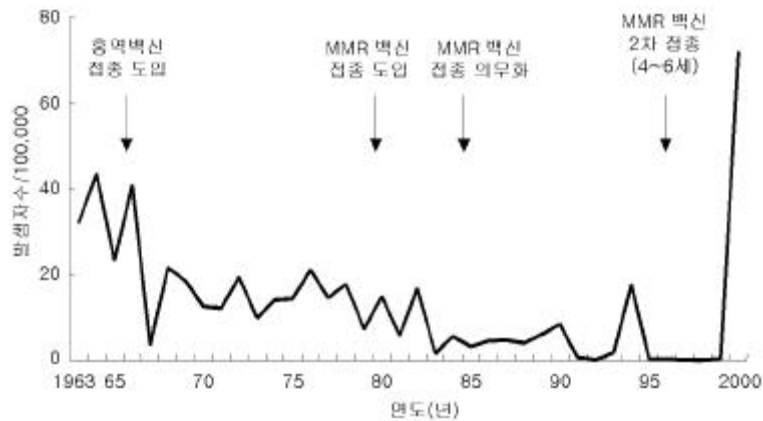


Fig. 1. (1963 2000 ; 2

,).

12 : 8 1 2001

2. 12 422.4 (Fig. 4).

가 292.2 가 4. MMR
 258.2 , MMR
 136.5 (Fig. 3). 21,188
 3. 74.8% 15,852
 24 MMR 1 , 1997
 4 5 가 4 6 MMR 2
 6 가 10 7 9 4,555 885
 19.4% 2 MMR
 10 가 1
 473.3 가 12 15

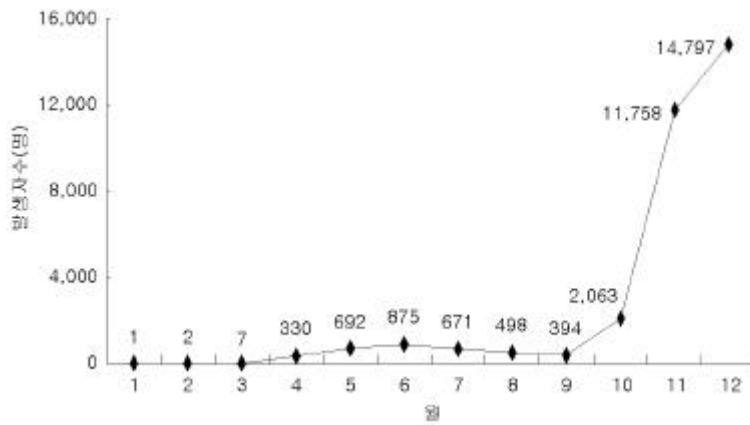


Fig. 2. (2000 2 ,)

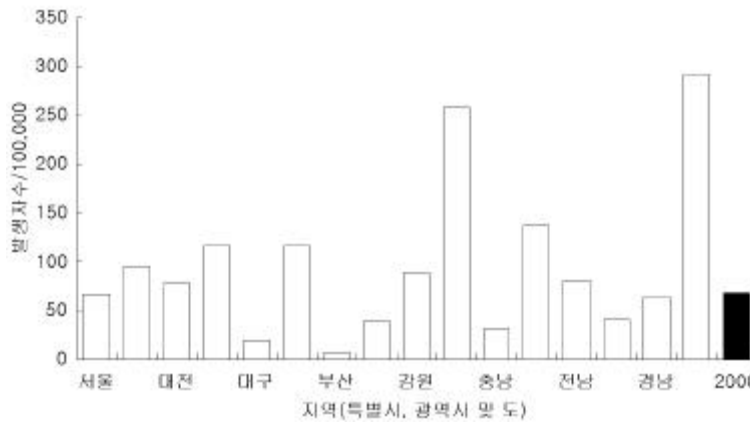


Fig. 3. (2000 2 ,)

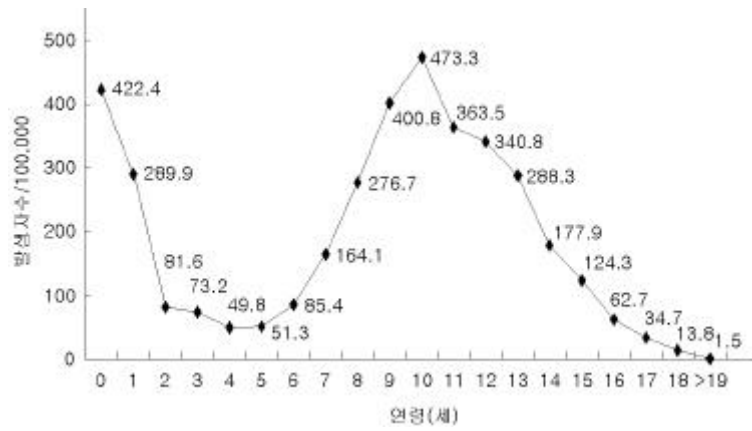


Fig. 4. (2000).

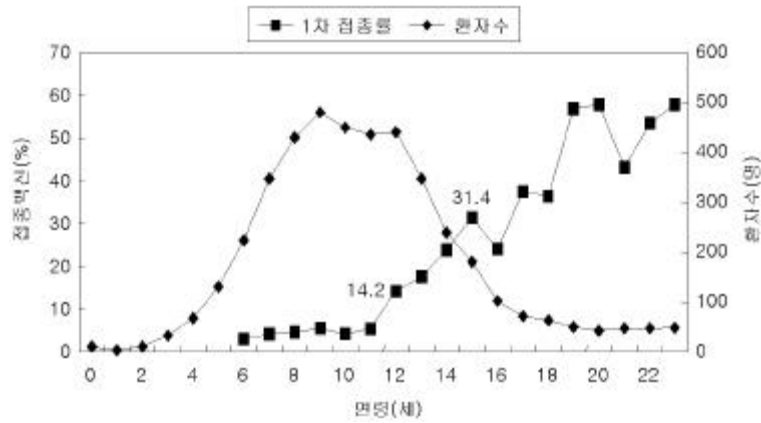


Fig. 5. 1 MMR (2000. 1 2000. 12).

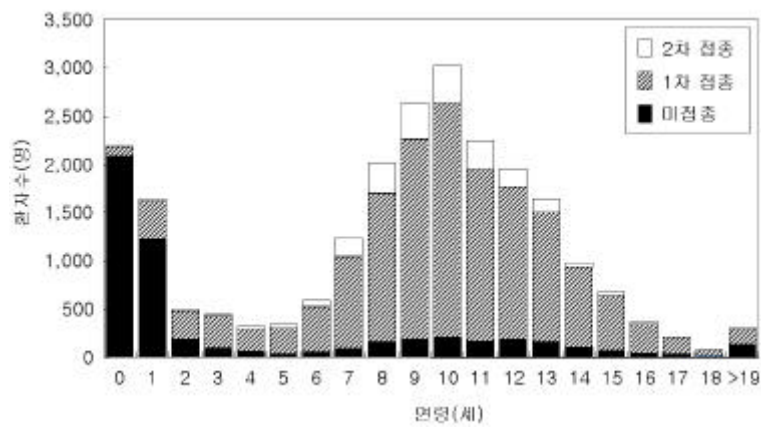


Fig. 6. MMR (2000).

14 : 8 1 2001

30% (Fig. 5).
1 (24)
1 , 7
1
2
(Fig. 6).

5. 2000

2000 24
13.5%
, 7 15
67.6%

81.1%
24
1
, 7
1
가
가가
1 , 2
³⁾. 1997 4 6 2
가 2

1.

3 5
, 1997 2
2001
가 ⁴⁾.
6
2 95%
, 7
(Catch-Up Programme)

,
2.
, , (7 18)
94 , , 282
, , 23,000
⁵⁾.

가
(, MMR)

가 (Behring) 가(IgG)
(Enzygnost Anti-Mea-
sles Virus IgG) (Enzyme
linked immunosorbent assay, ELISA)

16

3.
1)
94 282 가
, 22,584
20,715 (91.7%),
18,407 (81.5%)

18,139 (80.3%)
18,139
(‘ ’)

2)
8,912 49.1%
, 9,227 50.9%
가 52.8%, 41.4%, 49.1%

3)
MMR
가 1985
3 14,032

3,781 (26.9%)
 (' '), 가 , 2
 (' ') , 89.9%,
 1,455 (10.4%) . 86.2%
 4) (2)
 12 15 3
 1 4 6 2 0 , 1 , 2 가 81.9%, 84.5%,
 . 1 MMR 88.5% 가 .
 가 1985 (3)
 3 14,032 , 2
 1997 85.0% 92.4%, 92.4% 95.2
 3 4,801 %, 94.0% 97.8%
 . 1 84.2
 %, 2 37.7% . 1
 86.2%, 2 37.7% , (4)
 1 80.2% . 가 가
 . 2
 90.1%, 92.9%, 2 38.7%, 39.1 4.4% .
 % . 6) 2000
 5) (1)
 89.4% ' , 1
 85.5%, ()가
 92.8%, 94.5% 가
 가 . 2 188 54 1
 94% (84.7 93.3) , 가 , 14,032
 3 94% (94.3 94.7%) (Fig. 7). 4,414 31.5% . 94
 (1) 34 (36.2%) ,
 1 20 (21.3%) .

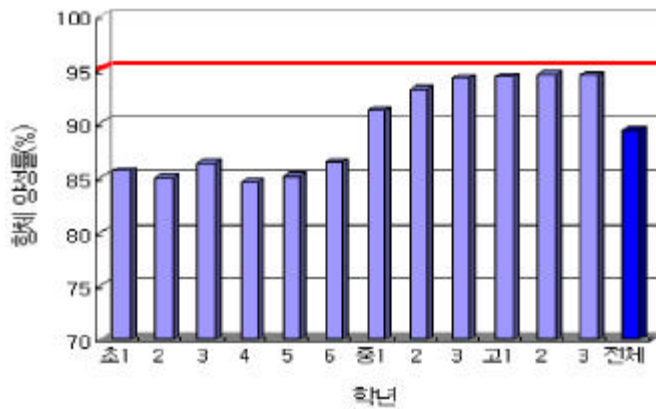


Fig. 7. (2000. 12).

(2) , , 가 1
 가 가 1
 1 ,
 가 2
 . , 가

(3) 가 가 2
 81.4% 8)
 92.8% , 2
 91.4% 98.0 가 6)
 % . 3 .

(Catch-up Campaign)

1. , 84.2%
 2000 12 , 95%⁶⁾
 , , 89.4%, 1 3 (2001 2
 6% 1) .

⁶⁾ . 2000

(7 15) 가 1)
 32,088 67.6% 7),
 (7 11) 14.
 5%, (12 15) 7.2% ,
 12.0% 84.2
 % . ,
 가 2000

, 2000 12
 , , 1/3
 2001

2. 2
 가 1
 93%
 , '97 2
 40%

- 1) . 2000 , 00-
6. , 2000:79
- 2) . 2000
 () .
- 3) CDC. Epidemiology and prevention of vaccine-preventable diseases, 6th ed, 2000:127-9.
- 4) . 가 5
 . 2001:1-16.
- 5) .
 2000.
- 6) WHO. Guidelines for epidemic preparedness and response to measles outbreaks, 19, Geneva, Switzerland, 1999:3-4.
- 7) . () .
- 8) CDC. Measles, mumps and rubella-vaccine use and strategies for elimination of measles, rubella, and congenital rubella syndrome and control of mumps. MMWR 1998;47(RR-8):15-6.