

Notes on the Korean Higher Fungi (XVI)

Duck-Hyun Cho

Department of Biology, College of Science and Technology, Woosuk University Chonju 565-701, Korea

ABSTRACT

Many higher fungi were collected at Mt.Sunun, Mt.Kirin, Samre-up, Whaam-sa and Mt.Unjang from June 1999 to June 2000. They were identified. As the resulting, *Pluteus thomsonii*, *Mycena polyadelpha*, *Mycena latifolia*, *Omphalina barbularum*, *Hygrocybe trunda* var.*macrospora*, *Cortinarius iodes* and *C. glaucopus* are newly to Korea. They were designed Korean common name by author.

Key Words : *Pluteus thomsonii*, *Mycena polyadelpha*, *Mycena latifolia*, *Omphalina barbularum*, *Hygrocybe trunda* var.*macrospora*, *Cortinarius iodes*, *C. glaucopus*.

INTRODUCTION

Work of higher fungi has not been completed in Korea. Really fungi roled ecomposer and controlled balance of ecology system. On the other repectively they have been used were resources as food, forests and pharamacy from ancient mankind.

Mt.Sunun is a provincial park, Samre-up and Whaam-sa is in Wanju-kun, Mt.Unjang is located a part of Noryong mountains vein. All they have good condition for fungi development.

This study continued as a series of Notes on the Korean Higher Fungi(I-VIX)

1. *Pluteus thomsonii* (Berk.& Br.) Dennis 갓주름난 버섯(신칭)

Breitn. & Kranz. Fungi, 132-133, Fig. 126, 1995.

Pileus 10-30mm broad, convex when young, soon plane, with small umbo, brown when moist with reddish

tinge, translucently striate up to the center, center darkish brown, tuberculatly wrinkled, hazel-brown when dry with darker center, barely striate, margin acute, slightly fringed. Context whitish to grayish brown, thin, odor. mild. Lamellae white when young, later dingy pink, broad, free, edges smooth. Stipe 2-4cm long, 0.2-0.4cm thick, cylindrical, slightly enlarged, bent toward the base, solid when young, soon hollow, fragile, surface of the upper half grayish white, gray below, whitish powdered, easily toward the apex. Spores 5.5-9x5-7 μ m, subglobose, basidia 15-20x4-5.5 μ m, clavate, cystidia 37.5-47.5x12.5-15 μ m, fusiform-clavate.

Habt: Solitary on dead wood of hardwood. Summer to autumn.

Distribution : Korea(Mt.Sunun), Europe, North America, Asia and North America.

Specimens studied : CHO-6239(1999.8.10) collected at Mt.Sunun of Kochang-kun in Chonbuk-do.

Corresponding author : Duck-Hyun Cho, E-mail: chodh@core.woosuk.ac.kr

homepage:<http://ruby.kordic.re.kr/~mushroom>, ruby.kordic.re.kr/~museum

2. *Mycena polyadelpa* (Lasch) Kuhn. 낙엽애주름버섯 (신칭)

Breitn. & Kranz. Fungi, 284-285, Fig.354, 1995.

Pileus 0.3-3mm broad, hemispherical to convex-campanulate, surface with fine radial furrow, pubescent, white, margin more or less undulating. Context white, membranous. Lamellae white, absent to rudimentary, sometimes well developed, broadly adnate to subdecurrent. Stipe 4-20mm long, 0.1-0.2mm thick, cylindrical, filiforms, often bent, entire length covered with fine whitish powder, later smooth. Spores 8-10.5x4-5 μ m, elliptical, projection at end, basidia 20-23.8x12.5-16.3 μ m, short clavate, cheilocystidia 22.5-25x11.3-15 μ m, clavate, with echinate to punctate, caulocystidia 32.5-35x12.5 μ m, clavate with punctate.

Hab : Clustered on fallen leaves. Summer to autumn.

Distribution : Korea(Whaam-sa) and Europe.

Specimens studied: CHO-6724(2000.7.2) collected at Whaam-sa of Wnaju-kun in Chonbuk-do

3. *Mycena latifolia* (Peck) A.H.Smith 넓은잎애주름버섯 (신칭)

Breitn. & Kranz. Fungi, vol.3, 278-279, Fig.345, 1995.

Pileus 10-20mm broad, hemispherical to campanulate when young, later conic-campanulate to convex, seldom with an obtuse umbo, surface smooth, lardaceously shiny, slightly lubricous when moist, dull when dry, translucently striate up to the center, center often almost darkish brown, paler toward the margin, margin acute, denticulate, whitish. Context watery brown, membranous, odor farinaceous, taste mild. Lamellae whitish to grayish white, broad, broadly adnate, more or less subdecurrent as small tooth, anastomosing, edges smooth, slightly floccose. Stipe 3-5cm long, 1-1.5mm thick, cylindrical, more or less flexuous, surface smooth, apex finely pruinose and grayish white, grayish brown below, base with whitish

mycelium, stiff, elastic, hollow. Spores 6-8 x 3.5-4.5 μ m, elliptical with slender at end, cheilocystidia 22.5-37.5x12.5-15 μ m, clavate with echinate and punctate, pleurocystidia 70 x 18.8 μ m, clavate with echinate, punctate, hyphae from lamellae 5-6.3 μ m wide, clamp connection present.

Hab.: Clutered on damp wood in coniferous forests.

Distribution : Korea(Mt.Unjang), Europe and North America.

Specimens studied : CHO-6528(1999.9.12) collected at Mt.Unjang of Chinan-kun in Chonbuk-do

4. *Omphalina barbularum* (Romagnesi) Bon 성긴주름술발버섯 (신칭)

Court., Champ. 168, f.339, 1994.

Pileus 2.5-4cm broad, convex to plane, disk depressed, grayish, margin pale grayish, striate up from margin to disk, pale beige. Lamellae subdecurrent, sparse, beige gray. Stipe 3- 5.5 x 0.5-0.3cm, more or less twist, upwards slender, solid.

Spores 7.5-9 x 4.5-6 μ m, subglobose, indistinctive with granule.

Habitat : Clustered on soil with mosses.

Distribution : Korea(Samre-up) and Europe.

Specimens studied : CHO-6222(1999.8.5) collected at Samre-up of Wanju-kun in Chonbuk-do.

5. *Hygrocybe trunda* var.*macrospora* (Hongo)Hongo 큰포자애비늘버섯 (신칭)

Imaz.& Hongo, Coll.III.Mush.Jap.53-54, Pl.8, fig.57, 1987.

Pileus 8-23mm broad, convex, yellow to reddish yellow, minute scales unchanged blackish. Lamellae decurrent with arch, pale yellow, sparse. Stipe 6-11.5cm long, 1.5-3mm thick, yellow to reddish. Spores 10-15x6-7.5 μ m, subglobose, seldom elliptical, seldom indistinctive with punctate.

Hab.: Clustered among mosses.

Distribution : Korea(Mt.Unjang) and Japan.

Specimens studied : CHO-6515(1999.6.11) collected at Mt.Unjang of Chinan-kun in Chonbuk.

6. *Cortinarius iodes* Berk. & Curt. 제비꽃끈적버섯 (신칭)

Phillips, Mushroom, 142-143, 1991.

Pileus 2-5cm broad, convex expanding, to bell-shaped, deep purpleish violet to slightly yellowish on disc, often spotted, irregularly with yellowish spots, smooth, very viscid when moist. Lamellae adnate, somewhat broad, violet then grayish cinnamon. Stipe 4.5-7.5cm long, 0.5-1.5cm thick, often irregular, swollen at base, concolorous the pileus, with faint ring zone at apex from cobwebby veil. Context soft, violet to pallid. Odor pleasant. Taste mild. Spores 6-8x5-7, elliptical, minutely roughened with warts, spore print rust-brown.

Habitat : Clustered on soils. Summer to autumn. Edibility.

Distribution : Korea(Mt.Unjang) and Northern America.

Specimens studied : CHO-6529((1999.6.12) collected at Mt.Unjang of Chinan-kun in Chonbuk

Remark : Comment The very similiar *Cortinarius iodeoides* Kauffman differs in its bitter cap surface and longer, narrower spores.

7. *C. glaucopus* (Schff.:Fr.) Fr. 청록끈적버섯 (신칭)

Phillips, Mushroom, 124-125, 1981.

Pileus 4-10cm broad, convex ochraceous tawny

covered in conspicuous darker innate fibrils, margin seldom weakly greenish at first. Stipe 1-5cm long 1-0.5cm thick, bluish lilac at first, persisting at apex, yellowish white below with age. Context whitish yellowish tinged bluish in upper stipe. Taste mild, smell none, more or less faintly mealy. Lamellae bluish lilac to clay-cinnamon with age. Spore 8-10x4.5-5.5 μ m, spore print rust, elliptical to almond-shaped, warts with roughened.

Habitat: Clustered on soils of coniferous and mixed woods. Autumn. Edibility unknown.

Distribution : Korea(Mt.Unjang) and Europe.

Specimens studied : CHO-6535(1999.6.12) collected at Mt.Unjang of Chinan-kun in Chonbuk-do.

REFERENCES

Breitenbach and Kranzlin, 1995. Fungi of Switzerland, Mykologia,

Courtecisse, 1994. Les Champignons de France, Eclectis.

Imazki, R. and Hongo, T., 1987. Colored Illustration of Mushroom of Japan, Hoikusha.

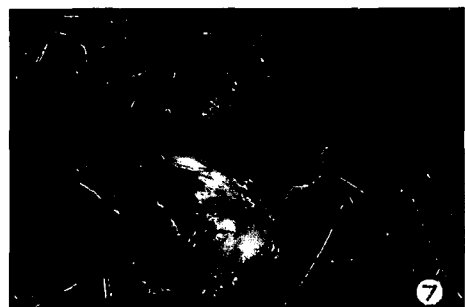
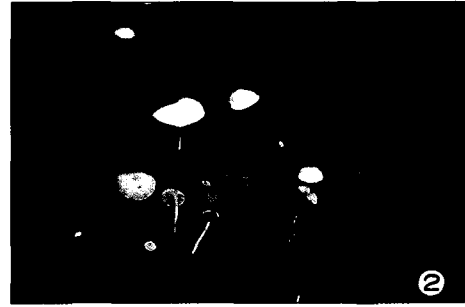
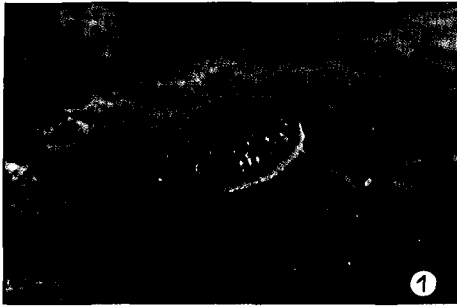
Phillips, R., 1981. Mushrooms and other fungi of Great Britain and Europe, Ward Lock Limited, London

Phillips, R., 1991. Mushrooms of North America, Little, Brown and Company

Received 2001. 1. 10

Accepted 2001. 4. 1

Plate



Plate

1. *Pluteus thomsonii* (Berk. & Br.) Dennis
3. *Mycena latifolia* (Peck) A. H. Smith
5. *Hygrocybe trunda* var. *macrospora* (Hongo) Hongo
7. *C. glaucopus* (Schff.:Fr.) Fr.

2. *Mycena polyadelpha* (Lasch) Kuhn.
4. *Omphalina barbularum* (Romagnesi) Bon
6. *Cortinarius iodes* Berk. & Curt.

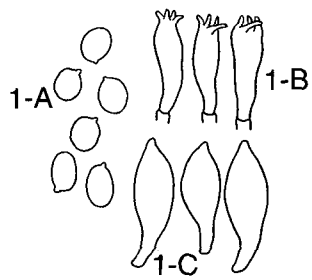


Fig. 1. *Pluteus thomsonii* (Berk.& Br.) Dennis
1-A, spores. 1-B, basidia. 1-C, cystidia

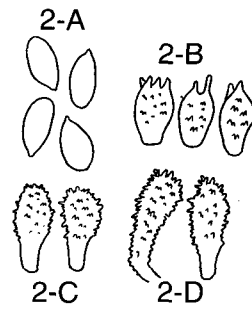


Fig. 2. *Mycena polyadelpa* (Lasch)Kuhn
2-A, spores. 2-B, basidia.
2-C, cheilocystidia. 2-D, pleurocystidia

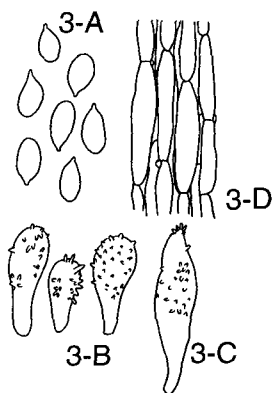


Fig. 3. *Mycena latifolia* (Peck)A.H.Smith
3-A, spores. 3-B, cheilocystidia.
3-C, pleurocystidia.
3-D, hyphae from lamellae trama

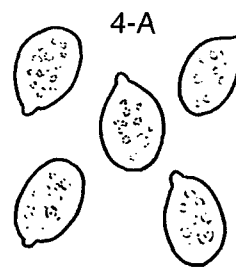


Fig. 4. *Omphalina barbularum* (Romagnesi) Bon
4-A, spore



Fig. 5. *Hygrocybe trunda* var. *macrospora*
(Hongo)Hongo
5-A, spores

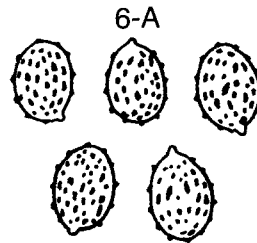


Fig. 6. *Cortinarius iodes* Berk. & Curt.
6-A, spores

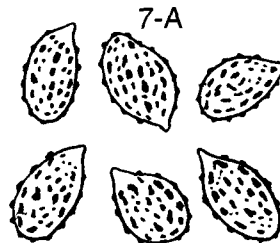


Fig. 7. *C. glaucopus* (Schff.:Fr.) Fr
7-A, spores