

- -

. . . .



11 가 3
가
:



1

1948
¹⁰⁾ 1962 Le Ber ⁵⁾

가 3

가 가

가 3 × 5cm

가

:

516
Tel : 031) 412-5040, Fax : 031) 487-9502, E-mail : hjs2000@netsgo.com

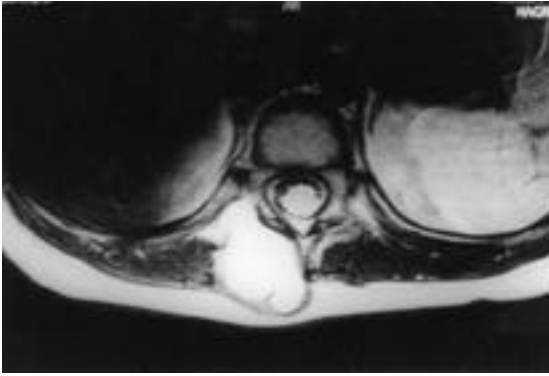


Fig. 1. The mass is located on the right side of the vertebra just lateral to the spinous process.

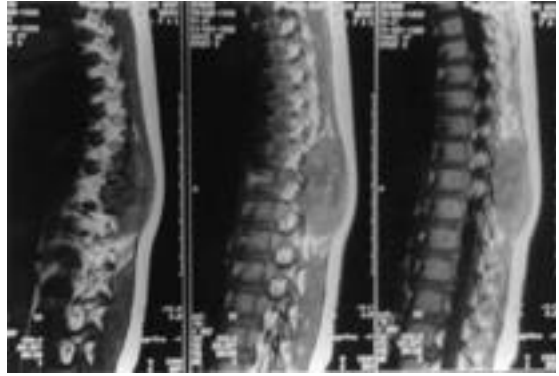


Fig. 2. T1 weighted images show low signal density and its level of involvement on the spine.

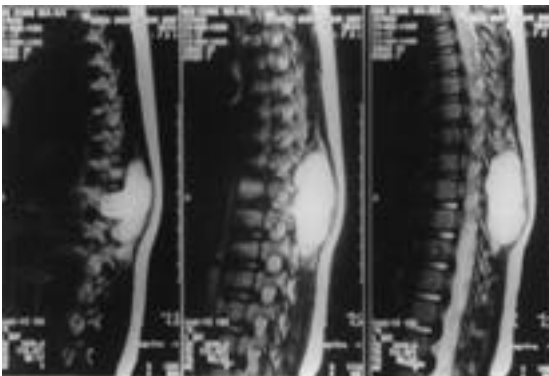


Fig. 3. T2 weighted images show high signal density.



Fig. 4. Gross morphology show ovoid irregular whitish mass.

가
8-9
11-12
(Fig. 1), T1
(Fig. 2), T2
(Fig. 3).
가
5.5×3.5×2.0cm
5cm MRI
(pseudocapsule)

가
(Fig. 4).
가
6×3.5×2cm 가
가
(Fig. 5).
(enchondral ossification)
(Fig. 6).

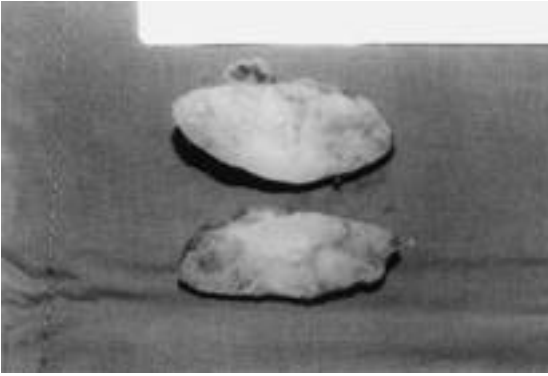


Fig. 5. Multilobulation is seen on the cross section of the mass. Note the cartilaginous-like nature.

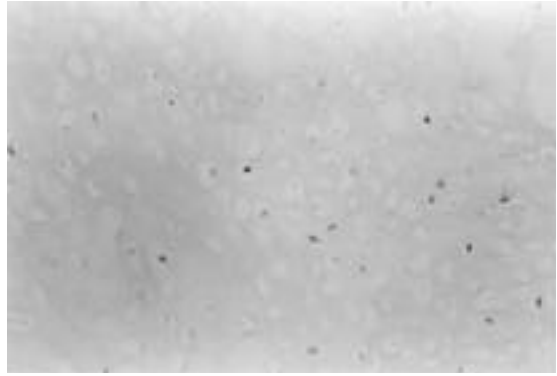


Fig. 6. Microscopically, the cells of the tumor are predominantly chondrocyte.

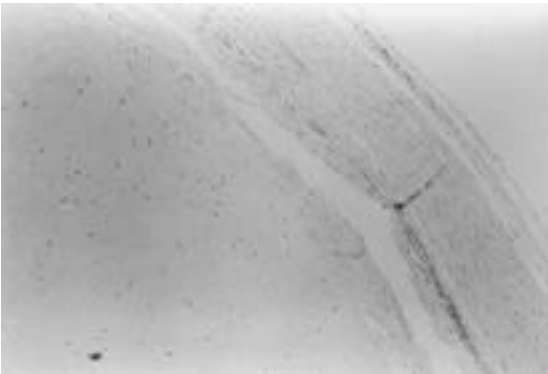


Fig. 7. Concomitant component shows fibrous matrix with lipomatous and angiomatous component.

(atypism), (pleomorphism)
 , 가
 (hypercellularity)

(Fig. 7).

가 .

가 ^{1,8)} .

¹⁰⁾ . Le Ber ⁵⁾ 36
 가 , 5 가
¹¹⁾ . 가 가
 , , , , ,
¹¹⁾ . 가
 11 .
 (chondrolipoangioma), (chondrolipo
 ma) (cartilage-containing
 benign mesenchymomas of soft tissue)
^{6,7)} .

2 ²⁾ , 1 ²⁾ , 1 ^{6,9)} ,
 1 ^{7,8)} , 1 ^{7,8)} , 1 ⁸⁾ ,
 2 ^{5,7,8)} , 5 1 ⁴⁾ ,
 1 ⁵⁾ .

¹¹⁾ ,

가

가 (pseudocapsule)

가 ,

T1

T1 , T2
 , STIR
 가
 가
 T1 , T2
 1 7
 가 1,8)

REFERENCES

1) **Bugg EI** : Benign mesenchymoma. *J Bone Joint Surg*, 48-A:1654-1655, 1966.

2) **Dorfman HD, Levin S and Robbins H** : Cartilage-containing benign mesenchymoma of soft tissue: Report of two cases. *J Bone Joint Surg*, 62-A: 472-475, 1980.
 3) **Frassica FJ and Thompson RC** : Evaluation, diagnosis, and classification of benign soft tissue tumors. *ICL*, 45-A, AAOS: 126-140, 1996.
 4) **Gibson JNA, Reid R and McMaster MJ** : Fibrocartilaginous mesenchymoma of the fifth lumbar vertebra treated by vertebrectomy. *Spine*, 19(17): 1992-1997, 1994.
 5) **Le Ber MS and Stout AP** : Benign mesenchymomas in children. *Cancer*, 15: 598-605, 1962.
 6) **Lim YC** : Mediastinal chondrolipoma. *Am J Surg Pathology*, 4-4: 407-409, 1980.
 7) **Maale GE, Weatherall P and Milchgrub S** : The characteristic features of chondrolipoangioma on magnetic resonance imaging: a report of three cases. *J Bone Joint Surg*, 76-A: 1062-1067, 1994.
 8) **Milchgrub S, McMurry NK, Vuitch F and Dorfman HD** : Chondrolipoangioma. *Cancer*, 15, 66(12): 2636-2641, 1990.
 9) **Scheetz WL, Jones CB, Sigalove WM** : Benign mesenchymoma of the mediastinum. *Am Surg*, 35(4): 274-278, 1969.
 10) **Stout AP** : Mesenchymoma, mixed tumor of mesenchymal derivatives. *Ann Surg*, 127: 278-290, 1948.
 11) **Stunden R and Lyer CP** : Benign Mesenchymoma of Childhood: A case report. *J of Ped Surg*, 30(10): 1502-1503, 1995.

Abstract

**Benign Soft Tissue Mesenchymoma in the Thoracic Spine Region
- A Case Report -**

**Joon-Seok Hong, M.D., Sung-Kon Kim, M.D., Jung -Ho Park, M.D.,
Jong-Woong Park, M.D., Jae-Chul Yoo, M.D.**

Department of Orthopedic Surgery, Korea University, Ansan Hospital, Ansan, Korea

Benign soft tissue mesenchymoma is a tumor composed of at least 2 mesenchymal elements, not ordinarily found together in a tumor. Very few cases are reported worldwide and even more, preponderance for cartilage in benign mesenchymoma is extremely rare. Up to our knowledge, total of 11 cases are reported to have cartilaginous rich benign soft tissue mesenchymoma. We are reporting a case of three-year-old male who developed benign soft tissue mesenchymoma rich in cartilaginous materials that occurred on the lower aspect of the back.

Key Words : Thoracic Spine, Benign Mesenchymoma, Harmartoma, Cartilage

Address reprint requests to

Joon Seok Hong, M.D.

Department of Orthopaedic Surgery, Ansan Hospital, Korea University

#516 Gojan-dong, Ansan, Kyonggi-do, 405-020, Korea

Tel : 82-31-412-5040, Fax : 82-31-487-9502, E-mail : hjs2000@netsgo.com