

金泉 (假稱)初等學校 校舍新築 計劃設計 研究

A Study on the Schematic Design for Dongshin Elementary School

崔武革* 李根宅** 柳林佑***
Choi, Moo-Hyuck Lee, Keun-Taek Ryoo, Im-Woo

1.

1.1

21

가

가 ,

7

가

12

1

*
**

1.3

1.3.1 :

1.3.2

7
21C

1.3.3

- :
(2) 1

- : 11,500 m² (3,485)

- : 26 (4 , 1, 2

5) 36

- : 1,233 (34.25)

- :

2.

2.1

32.3km

가
가

1km

1-2

4

1)

1998

1. 1998. 12. 31

	1	2	3	4	5	6	7	8	9	10	11	12
()	- 0.2	3.9	8.6	16.0	19.1	21.7	24.8	25.3	22.2	16.9	7.8	3.4
(mm)	26.0	40.0	20.0	174.5	93.6	237.5	165.0	486.0	327.0	61.0	15.0	2.0

2. 1998

	14.1
	63.3% (14.0%)
	1.1% (8.6%)

(*99)

1)

0.3 4.2m

1.3 8.8m

0.7 2.0m

15mm

2.2

가 , 1994
 1998
 가 가 (,)
 가 , 2011
 23
 가
 4.54km² , 1995 7,752
 2000 < 3>
 2 가 가 가
 가



1



2



3

3.

	(km ²)	()	가 ()	(/ km ²)
1995	4.54	7,752	2,309	1,707.5
2000.10		13,541	-	2,982.6

(2)

#1, #2
 가 63dB(#1), 58dB(#2)
 가 “가”
 65dB

2.3.

(1)

()
 20
 (2000. 9. 29.)가
 3
 < 1>, <
 2>, < 3>



APT

가

가 10.5m, 8m, 12m, 10m 가 < 5> .

2.3
2.3.1

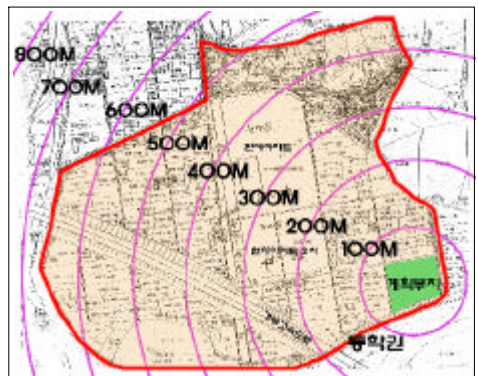
가 , 1995
2011 가
5 14 31,050 가
230,000 13.5% 가
가 가

10.5m, 8m, 12m, 10m 가 < 5> .



5.

38 , 1km
가 , 2km
가 , 5
, 6 1, 2, 3 가
2.3.2 가



6.

가 3.
< 6>
가 < 6>
500m
가 가 가

가 3.
7
3.1
가 가

가 , 12m, 10m 가
 , 106 ,
 104m,
 124m 11,500m²(3,485)
 가 ,

3.2 7
 1999 12 30 7

1997

- 1) 5,379m²,
4,266m²
- 2) , , , , , 7
- 3) , , , , , ,

3.3

(1) 가

(2)

(3)

(4)

		
		가

4.2 1

1) ALT - 1

4.

4.1

2

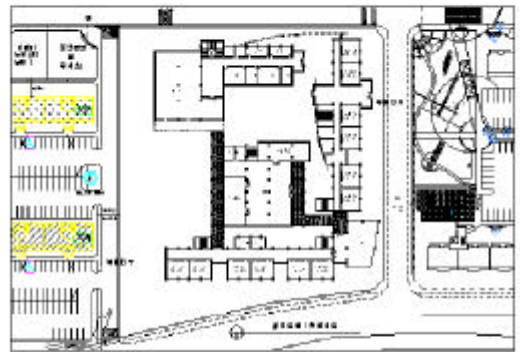
() , , , ,
 가

5. 1

	ALT - 1	ALT - 2	ALT - 3
	· / / - · / -	· / / - · - · -	· - , - · / -
	· 가 ,	· ,	· 가 ,
	· - 12m · - 8m · - 8m	· - 12m · - 8m · - 10m · - 8m	· - 12m · - 8m · - 10m · - 8m
	· ,	· ,	· ,
	· ,	· , , ,	· , 4 , ,
	· 가 ,	· / ,	· / ,
	· ,	· ,	· ,



2) ALT-2



4.3 2

2000 9 18

2

6. 2



3) ALT-3

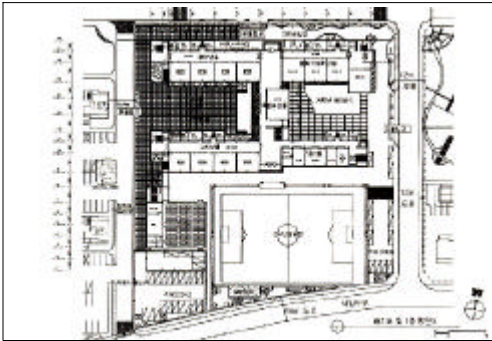
	ALT-1	ALT-2	ALT-3
			-1

D) ALT-1



10. 2 ALT-1

2) ALT-2



11. 2 ALT-2

3) ALT-3



12. 2 ALT-3

4.4 3
2000 10 2

< 7. 3 > 3

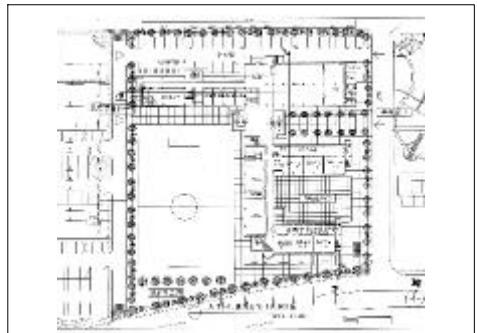
-
-
-
-

5.

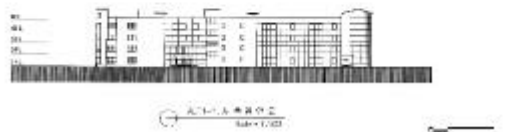
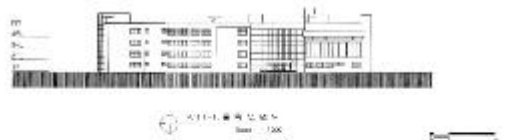
5.1 1-1
5.1.1

3

5.1.2



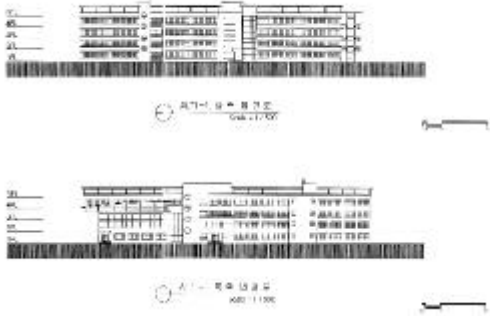
13. 1-1



14. 1-1

7. 3

	1-1	1-2
	<p>1-1</p> <p>1</p> <p>-26 : 가 1</p> <p>-36 : 2, 3, 4</p>	<p>1-2</p> <p>1</p> <p>-26 : 가 1</p> <p>-36 : 2, 3, 4</p>
	2	2-1
	2-1	<p>2</p> <p>1</p> <p>-26 : 1</p> <p>-36 : 2, 3, 4</p>



15. 1-1

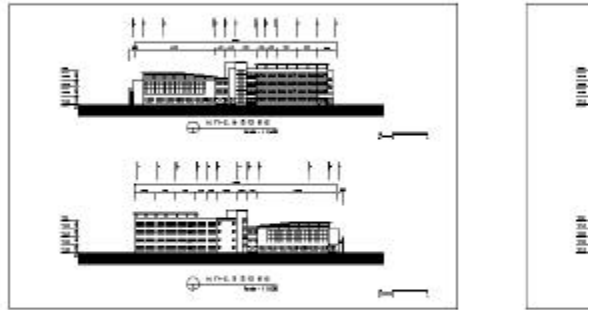
5.2 1-2
5.2.1

가



8. 1-1 (: , m²)

		1-1				
		26		36		
		67.5	26	1,755.0	36	2,430.0
		27.0	7	189.0	7	189.0
		40.5	26	1,053.0	36	1,458.0
				2,997.0		4,077.0
		135.0	1	135.0	1	135.0
		135.0	1	135.0	1	135.0
		135.0	1	135.0	1	135.0
		135.0	1	135.0	1	135.0
	1	108.0	1	108.0	1	108.0
	2	162.0	1	162.0	1	162.0
		135.0	1	135.0	1	135.0
		135.0	1	135.0	1	135.0
		153.0	1	153.0	1	153.0
		126.0	1	126.0	1	126.0
				1,359.0		1,359.0
		34.0	1	34.0	1	34.0
		96.75	1	96.75	1	96.75
		34.0	1	34.0	1	34.0
		34.0	1	34.0	1	34.0
		67.5	1	67.5	1	67.5
		27.0	1	27.0	1	27.0
		34.0	1	34.0	1	34.0
		18.0	1	18.0	1	18.0
		38.25	1	38.25	1	38.25
		45.0	1	45.0	1	45.0
	(,)	20.25	2	40.5	2	40.5
		448.75		469		469
		648.0	1	648.0	1	648.0
		648.0	1	648.0	1	648.0
				6,121.0		7,201.0
		132.3	1	132.3	1	132.3
		89.1	1	89.1	1	89.1
		81.0	1	81.0	1	81.0
		302.4		302.4		302.4
(,)				2,439.81		2,540.61
				604.8		604.8
				9,468.01		10,648.81

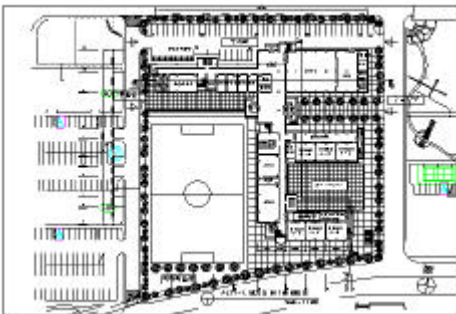


5.3 2-1
5.3.1

1. ,
2. ,
3. ,
4. 가

1. , 16 2 , 2000. 2.
2. , 16 2 , 2000. 2.
3. , 16 3 , 2000. 3.
4. , 가 , 1999. 6.
5. , , , 1999. 5.
6. , , 1998. 9.
7. , , 1998. 9.
8. , , 1998. 9.

5 3 2



18. 2-1