

# 釜山 中學校 基本計劃設計 研究

A Study on Preliminary Design for Kum-Hwa Middle School in Busan

李 璿 求\*     金 承 濟\*\*

Lee, Sun-Koo, Kim, Seung-Je

1.

1.1

1,440 ( 2001 )  
7

「 2 」  
12,001m<sup>2</sup> 36  
40 )  
7

- )  
- )

「 (home base)」

\*  
\*\*

2.

2.1

(home room)/  
(home base)  
가  
60 /70 “ ”  
(open-plan school, “ ”)  
“ ”  
(base)  
「 (home base)」

가  
40  
(群)

1)  
1974 “ ”(National Union of Teachers)

가

1) Seaborne, M., Primary school design, London 1971, p. 67

「 . . . 」가 . . . . . 2) . . . . .

. . . . . 가 . . . . .

. . . . . 가 . . . . . “ 가 ”

“ . . . . . ” . . . . . 가

. . . . . 가 “ ” . . . . .

/ (home base)” . . . . .

“ ” 3-6 . . . . . 2.3 7

/ 가 . . . . .

가, . . . . .

. . . . . 가 (school-in-school system)” “

2.2 . . . . .

. . . . . 가 (9m x 7.5m) 가

(media center)/ . . . . . (variability)” “

(open space) . . . . . (flexibility)” “

. . . . . 4 가 (群)

. . . . . 가 (40 x 40=160)

. . . . . “ / ”

2) Seaborne, M.+R. Lowe, The English School. Its architecture & organization, vol. 1870- 1970, London 1977, p. 180

15.08% )

15,689가 56,482 (3.6人/가 )

3.

3.1

가



3.2 「 2 」 1,437,099㎡  
14,559

2

500m

가

가

가

가

가

가

가

25km,  
3km

1,454,341㎡(145ha)

가

가

가

가

가

가 가

1999

(  
13,180

44,968



<

>

17m

가

가

4.

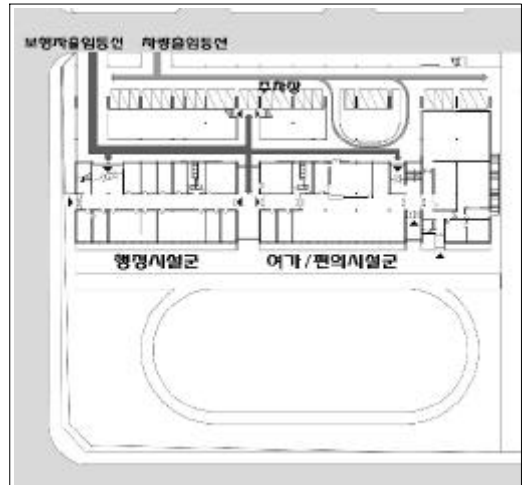
1

4.1 1

4.1.1

1

“ ”  
 • (home base)



< 1 1 >

4.1.2

(open space)

, 가

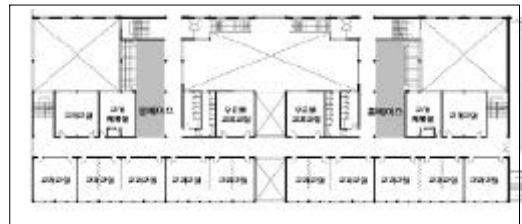


< 1 >

(home base)

가

4.1.3



< 1 >

8.4m ( 70.56㎡ ) 8.4m x

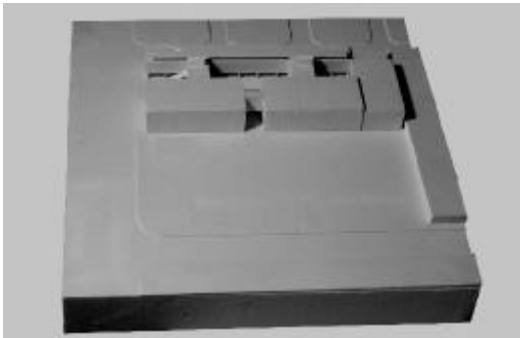
(module)

12

4

6

1



< 1 1 >

4.2 2

4.2.1

< 1 >

(A)		70.56	36	2,540.16
		60.48	6	362.88
		105.84	2	211.68
		105.84	1	105.84
		105.84	2	211.68
		105.84	1	105.84
		105.84	1	105.84
	가	105.84	1	105.84
		105.84	2	211.68
		105.84	1	105.84
		35.28	7	246.96
			4,314.24	
(B)	/	55.44	8	418.26
		106.02	6	636.12
			1,054.38	
(C) /		35.28	1	35.28
		35.28	1	35.28
		105.84	1	105.84
		70.56	1	70.56
	/	35.28	1	35.28
	/	35.28	1	35.28
		35.28	1	35.28
		35.28	1	35.28
		35.28	1	35.28
		35.28	1	35.28
			458.64	
(D)		70.56	1	70.56
		36.00	1	36.00
		36.00	1	36.00
				142.56
(E)		60.48	6	362.88
		70.56	1	70.56
		126.9	1	126.9
		70.56	2	90.72
		35.28	1	35.28
		35.28	1	35.28
		243.00	1	243.00
		30.24	1	30.24
				994.86
(F) 가/		370.44	1	370.44
		35.28	1	35.28
		95.76	1	95.76
		35.28	1	35.28
			536.76	
(A+B+C+D+E+F)	-	-	-	7,501.44
(H) /	-	-	-	3,684.3
(I) /	-	-	-	608.04
(J) /	/	226.8	1	226.8
				12,020.94

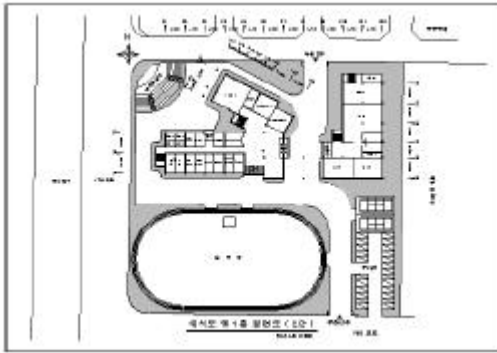
□

1, 2,

1

4

OPEN SPACE



< 2 >

4.2.2

1

1

2

1

4.2.3

5

가

, OPEN

SPACE

$$8.4m \times 8.4m = 70.56m^2$$

2 4

5

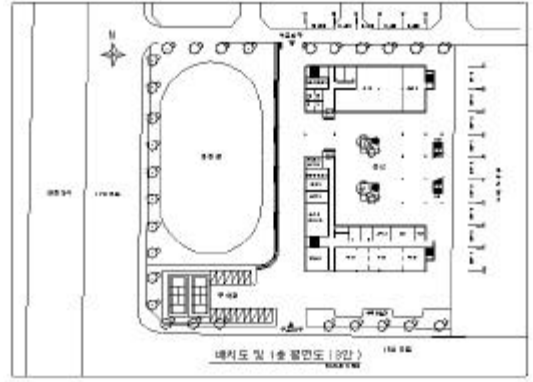
< 2 >

				(㎡)
		4	1	331.8
		2		141.12
		2	1	190.68
		1	4	432.36
		3	3	578.76
		4	1	331.80
		1	4	423.36
		2		211.68
		2		211.68
		2		211.68
	가	2		211.68
	open space	8		628.02
	home base	30		634.50
		5		223.02
	( )	1		362.88
		1		105.84
		2		141.12
				5,221.86
		2		211.68
		1		105.84
		1		141.12
		1		35.28
		1		35.28
		1		141.12
		7		289.8
		1		70.56
		1		35.28
		1		35.28
		1		352.80
		1		140.96
		1		27.72
		1		35.28
		1		35.28
		1		27.72
		1		35.28
				1,756.28
		1		35.28
		1		35.28
	( )	1		105.84
		1		27.72
		1		35.28
				239.40
		1		70.56
		11		577.55
				648.11
				2,814.2
				10,679.88



< 2 1 >

4.2.4



< 3 >

4.3.2

가

5

4.3 3

4.3.1

가

가

가

1

2

5



< 3 1 >

< 3 >

				(m <sup>2</sup> )
		5		352.80
		2		141.12
		2		141.12
	1	5		458.64
	3	3	2	624.96
	1	4		388.08
		5	1	400.68
	2			211.68
	2			211.68
	2			211.68
가	2			211.68
open space	8			383.04
home base	36			635.04
	8			381.78
( )	1			380.95
	1			211.68
	2			141.12
5,487.73				
		2		211.68
		1		168.84
		1		168.84
		6		190.26
		1		70.56
		1		168.84
		6		262.08
		1		35.28
		1		35.28
		2		70.56
		1		23.94
		1		282.24
		1		141.12
		2		23.94
		1		35.28
		2		23.94
		1		35.28
		1		35.28
1,983.24				
		1		35.28
		1		35.28
		1		105.84
		1		35.28
		1		23.94
		1		35.28
		1		35.28
306.18				
		1		70.56
		11		592.20
662.76				
3787.00				
12,226.91				

4.3.3

1,5

$$8.4m \times 8.4m = 70.56m^2$$

· 1

· 2

1

2.7m

· 3

· 4

· 5

4.3.4

가

· 1

5

가

1. / / / , 2000

2. , 7 1997

3. Seaborne, M., Primary school design, London 1971

4. Seaborne, M.+R. Lowe, The English School. Its architecture & organization, vol. 1870-1970, London 1977