

One New Species of the Genus *Misumenops* from China (Araneae, Thomisidae)

Yin, Chang-Min, Xian-Jin Peng and Joo-Pil Kim*

(College of Life Science, Hunan Normal University, Changsha, Hunan, P. R. China 410081;
Department of Applied Biology, Dongguk University · *The Arachnological Institute of Korea)

중국산 꽃게거미속(거미목, 게거미과)의 1 신종

윤장민 · 팽금현 · 김주필*

(중국 장사 호남사범대학교 생명과학대학, *동국대학교 응용생물학과 · 한국거미연구소)

ABSTRACT

The present paper reports one new species, *Misumenops hunanensis* sp. nov., from China. Type specimen are deposited at College of Life Science, Hunan Normal University. Measurements are in millimeter.

Key words : Araneae, Thomisidae, *Misumenops hunanensis*, China.

***Misumenops hunanensis* sp. nov.**
(Figs. 1-10)

Specimen examined: Holotype, 1 ♀, 3-VIII-1984, Huan-sang, Suining County (26° 36'N, 111° 12'E), Hunan Province, leg Zhang Yong-Jing; paratypes, 1 ♂, 31-V-1996, Suining County, Hunan Province, leg Yin Chang-Min, Peng Xian-Jin & Zhang Yong-Jing; 1 ♀ 1 ♂, 17 ~ 23-VIII-1995, Mt. Wuyi, Chong'an (27° 48'N, 111 °E), Fujian Province, leg Xie Li-Ping; 1 ♀, 9-IX-1995, Longshan County, Hunan Province, leg Zhang Yong-Jing; 3 ♀, 29-V-1996, Shimen County, Hunan Province, leg Yin Chang-Min.

Abbreviation used: ARE= anterior eye row, AL= abdomen length, ALE= anterior lateral eye, ALE-PLE= interval between ALE and PLE, AME= anterior median eye, AME-AME= interval between AMEs, AW= abdomen width, CL= carapace width measured at the widest position, L= length, MOQ= median ocular quadrate, PER= posterior eye row, PME= posterior median eye, PME-PME= interval between PMEs, PME-PLE= interval between PME and PLE, TL= total length, W= width.

Measurements: Female: TL 4.20-5.00. Holotype: TL 4.20, CL 2.10, CW 2.00, AL 2.80, AW 2.30. Legs: I 9.05 (3.00, 3.05, 2.00, 1.00); II 8.50 (2.70, 2.90, 1.90, 1.00); III 4.00 (1.03, 1.40, 0.08, 0.50); IV 4.40 (1.40, 1.60, 0.90, 0.50); leg formula I, II, IV, III. Eye size and interval: AME 0.066, ALE

0.10, PME 0.05, PLE 0.066, AME-AME 0.23, AME-ALE 0.20, PME-PME 0.33, PME-PLE 0.30; MOQ: L 0.40; W 0.40 (front), 0.50 (back).

Male: 3.30-4.60. Allotype, TL 3.30, CL 1.70, CW 1.70, AL 2.10, AW 1.60; Legs: I 9.00 (2.80, 3.00, 2.00, 1.20); II 8.70 (2.70, 3.00, 2.00, 1.00); III 3.70 (1.20, 1.30, 0.70, 0.50); IV 3.80 (1.20, 1.30, 0.80, 0.50); leg formula I, II, IV, III. Eye size and interval: AME 0.067, ALE 0.094, PME 0.05, PLE 0.065, AME-AME 0.20, AME-ALE 0.17, PME-PME 0.28, PME-PLE 0.27; MOQ: L 0.40; W 0.40 (front), 0.50 (back).

Description: Female: Carapace (figs. 1-2) pale brown, with two subaxial longitudinal brown band; cervical and radial grooves distinct. Chelicerae, palpus, endites, labium and sternum pale brown. Abdominal dorsum (figs. 1-2) with a large fascinate marking which almost occupied the whole dorsum except anterior-lateral side. The ventral grayish-pale yellow, with a gray anterior area in front of epigastric groove. Spinnerets grayish brown, its external sides with a small black marking connected with the large marking on dorsum. Epigynum (fig. 5) with a bell-shaped hood; spermatheca (figs. 6-7) large C-shaped, each one with a lateral tuberculous branch, by which it can be clearly distinguished from *M. tricuspoidatus*.

Male: Body color darker than that of female. Carapace (figs. 3-4) grayish brown; lateral margin black, two subaxial longitudinal band dark and clear; cervical and radial grooves

not as clear as those in female. Sternum, legs III & IV, spinnerets grayish brown. Chelicerae brown. Femora of palpus, legs I & II black brown; legs with dark annuli. Endites & labium black brown. Abdominal ventral with a gray rectangle area, its surrounding scattered with black markings and brown spots. Palpus (figs. 8-10) with three tibial apophyses; embolus originates from the position of five O'clock (fig. 9), its terminal portion separated from the bulb (fig. 9).

Distribution: China (Hunan, Fujian).

Etymology: The specific name refers to the type locality.

Remarks: This new species is similar to *M. tricuspidatus* (Fabricius, 1775), but can be distinguished from the latter by: 1. the fascinate markings on abdominal dorsum (figs. 1-4); 2. vulva (figs. 6-7); 3. embolus originates from the position of five O'clock (fig. 9); that of the latter from one O'clock.

적 요

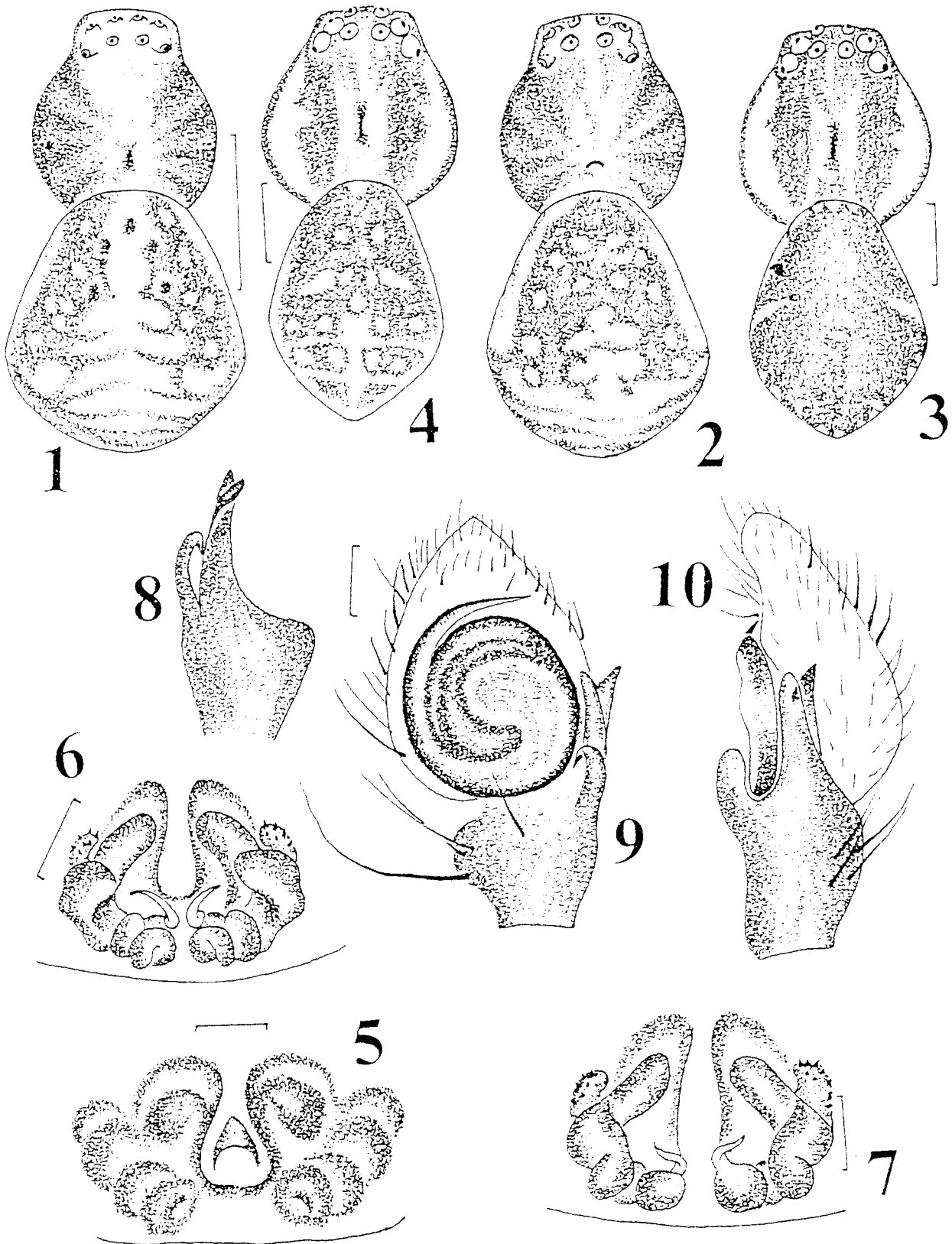
저자들은 중국 후안상 수인닝현, 우이산, 룡상현, 시멘현, 등지에서 채집한 게거미과의 꽃게거미속에 속하는 *Misumenops hunanensis* sp. nov. (신칭)을 신종으로 기재 발표하는 바이다.

검색어: 거미목, 게거미과, 꽃게거미속, *Misumenops hunanensis*, 중국.

REFERENCES

- Ono, H. 1988. A revisional study of the spider family Thomisidae (Arachnida, Araneae) of Japan. National Science Museum. Tokyo. pp. 162-168.
- Song, D.X. 1987. Spiders from agricultural regions of China (Arachnida, Araneae). Agricultural Publishing House. Beijing. pp. 225-257.

One New Species *Misumenops* from China



Misumenops hunanensis sp. nov.

Figs. 1-10. (Scale line = 1.00 (1-4); 0.10 (5-10)) 1-4. Body: 1. holotype; 2. female from Chong'an; 3. allotype; 4. male from Chong'an. 5. Epigynum. 6-7. Vulva: 6. holotype; 7. paratype from Chong'an. 8-10. Palpal organ: 8. tibial apophyses; 9. ventral; 10. lateral.