

One New Species of Genus *Heteropoda* from China (Araneae, Heteropodidae)

Yin, Chang-Min, Heng-Mei Yan and Joo-Pil Kim*

*(Department of Zoology, Life Science College, Hunan Normal University, Changsha, Hunan, P.R. China 410081;**Department of Applied Biology, Dongguk University · *The Arachnological Institute of Korea, Seoul)***중국산 농발거미속(거미목, 농발거미과)의 1신종**

윤장민 · 언형매 · 김주필*

(중국 장사 호남사범대학 생명과학대학 동물학과, *동국대학교 응용생물학과 · 한국거미연구소)

ABSTRACT

This paper deals with one new species *Heteropoda guangdongensis* sp. nov. of genus *Heteropoda*. Type specimen are deposited at College of Life Science, Hunan Normal University. Measurements are in millimeter.

Key words : Araneae, Heteropodidae, *Heteropoda guangdongensis*, China

***Heteropoda guangdongensis* sp. nov.**

(Figs. 1-4)

Specimens examined: Holotype, 1 ♀, 3-9-VI-1997, Island Dapeng, Longgongqu, Shenzhen City (21° 01'N, 110° 30'E), Guangdong Province; Paratypes, 4 ♀ ♀, 24-29-V-1998, Island Naozhou, Zhanjiang City (29° 24'N, 121°, 18'E), Guangdong Province, leg Yan Heng-Mei.

Abbreviation used: AER= anterior eye row, AL= abdomen length, AMI= anterior median interval, AMLI= anterior-median-lateral interval, AW= abdomen width, CL= carapace length, CH= Clypeus height, CW= carapace width, MOQ= median ocular quadrate, PER= posterior eye row, PLE= posterior lateral eye, PME= posterior median eye, PMI= posterior-median interval, PMLI= posterior-median-lateral interval, TL= total length.

Measurements: Female: TL 10.00-14.20, Holotype TL 10.00, CL 4.50, CW 5.00, AL 5.50, AW 4.00. Legs: I 18.90 (5.50+6.50+5.20+1.70); II 18.90 (5.30+7.00+5.00+1.60); III 13.70 (4.00+5.00+3.50+1.20); IV 14.60 (4.50+6.00+4.90+1.20); Leg formula: II = I IV III. Eye size and interval. AME = ALE (0.30), AMI-AME (0.40), AME-ALE (0.30), PME = PLE (0.25), PME-PME = PME-PLE (0.50), MOQ length = width of its back side (0.95) > its front size (0.90), CH=0.30.

Description: Female: Carapace red brown, with deep color

patches. Cervical groove deep and wide. Head region slightly elevated. CH almost equal to the diameter of AME. Four light color spots situate behind eye field and in front of cervical groove. Thoracic groove longitudinal, short and deep, red brown. Radial groove distinct. Lateral margins of thoracic region dark. Sternum yellowish brown. Chelicera dark brown with 2 promarginal teeth, the first one bigger. 4 retromarginal teeth, their sizes almost equal. Endite deep brown, its distal part yellowish brown. Labium wider than length, dark brown. Palp and leg yellow to deep brown. Abdominal dorsum yellow brown with delicate dark brown pattern, tortoiseshell-like. Grey dark in the middle, yellow brown in the lateral. Spinnerets yellowish brown, with dark brown hairs. Atrium pit volumetric flask-like. Spermatheca pear-shaped. Its membranous duct curved at its anterior.

Male: Unknown.

Distribution: China (Guangdong).

Etymology: The specific name refers to the type locality.

Remarks: The body size and external feature of this species is similar to *Heteropoda tiantongensis* Zhang et Kim, 1996, but it can be distinguished by : (1) number of the teeth on retrolateral margin of chelicera are different, the former with 4, that of the latter with 6; (2) Atrium pit of this species volumetric flask-like, the latter's separated-funnel-like; (3) spermatheca shorter than that of the latter and copulatory ducts differ from each other.

ACKNOWLEDGEMENT

Many thanks to Mr. Tang Guo, for inking the figures.

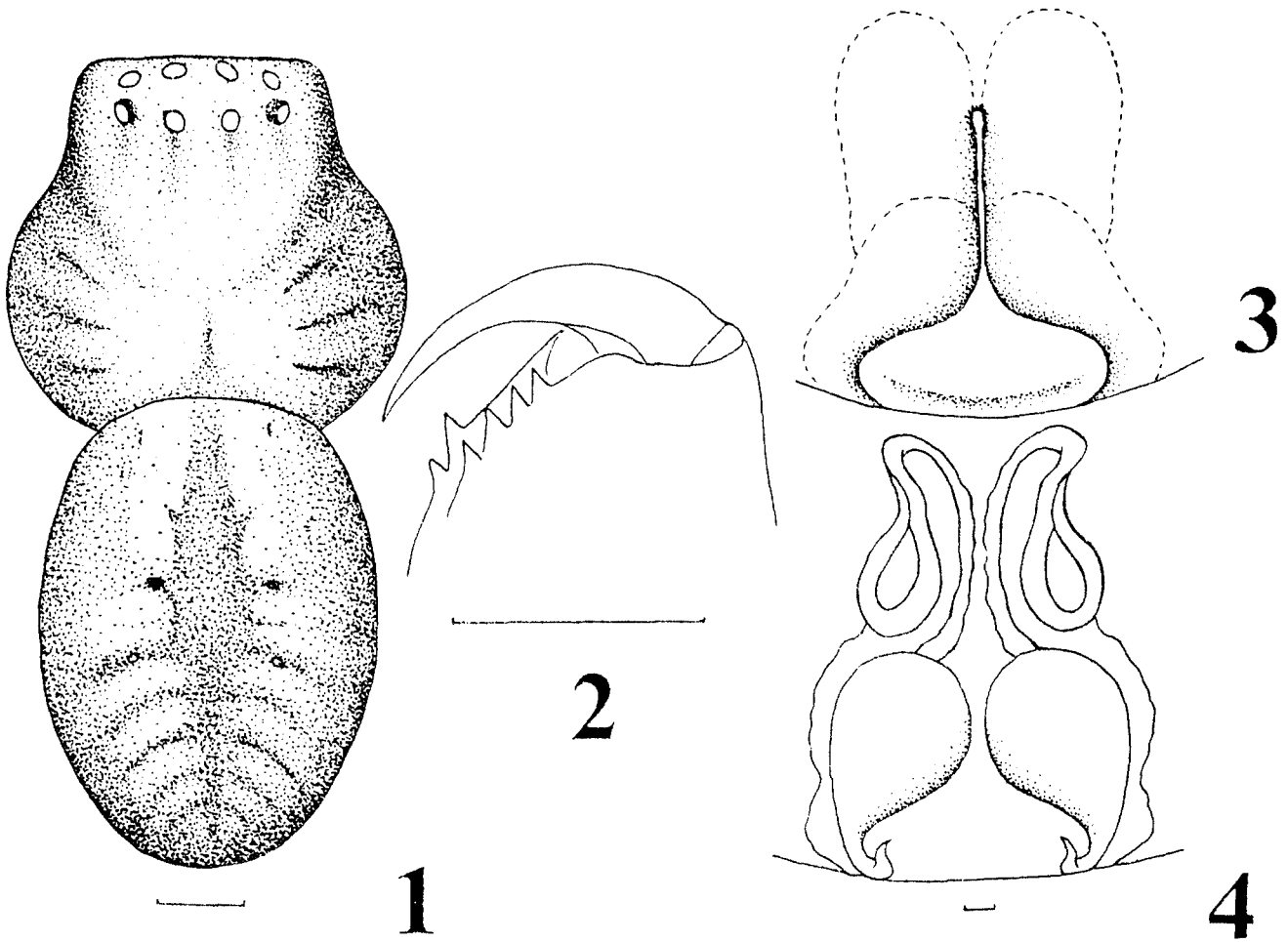
적 요

중국 광둥지방에서 채집한 농발거미과 농발거미속에 속하는 *Heteropoda guangdongensis* sp. nov. (신칭)를 채집하였기에 이를 신종으로 기재 보고하는 바이다.
 검색어: 거미목, 농발거미과, 농발거미속, *Heteropoda guang-*

dongensis, 중국.

REFERENCES

- Wang, J.F. 1990. Six new species of the spider of the genus *Heteropoda* from China (Araneae: Heteropodidae). *Sichuan J. Zool.* **9**(3) : 7-11.
- Wang, J.F. 1991. Two new species and three supplemental descriptions of family Heteropodidae from China (Arachnida: Araneae). *Sichuan J. Zool.* **10**(1) : 3-6.
- Zhang, Y.J. and J.P. Kim. 1996. Three new species of the family Heteropodidae from China (Arachnida: Araneae). *Korean Arachnol.* **12**(1) : 77-85.



Figs. 1-4. *Heteropoda guangdongensis* sp. nov. (Scale line : 1.00 (1, 2); 0.10 (3, 4)) 1. Body; 2. Chelicera; 3. Epigynum; 4. Vulva.