

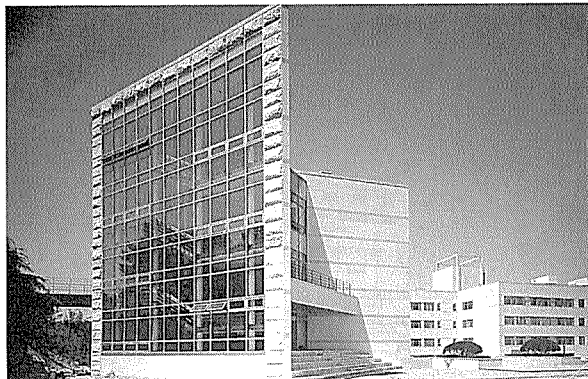
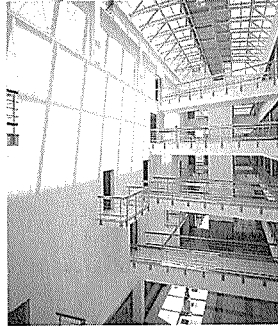
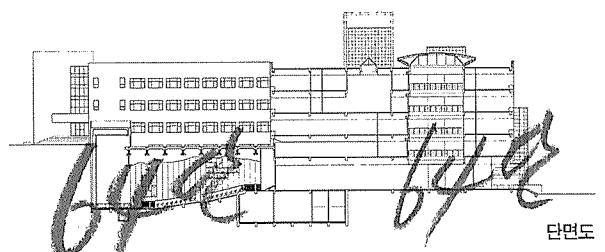
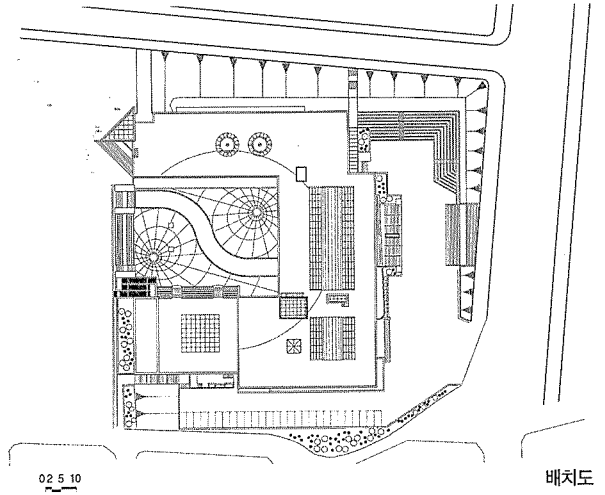
배재대학교 21C관

21 Century Hall Paichai University

부대진+김무현/ 진아건축
 Designed by Bou Dae-Jin & Kim Moo-Hyun

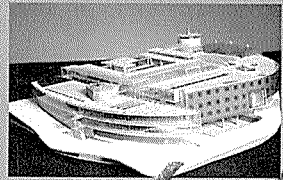
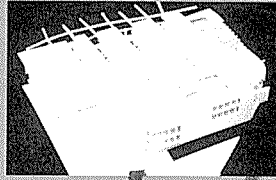
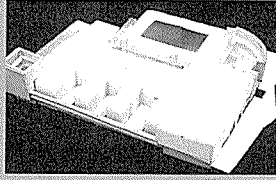
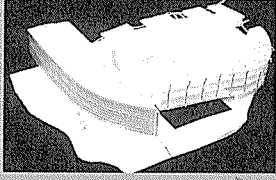
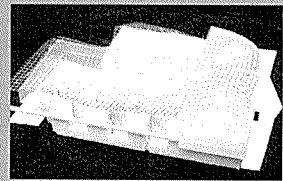
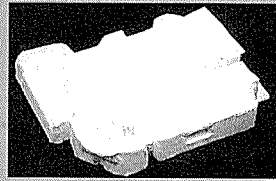
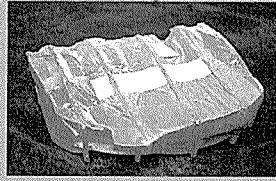
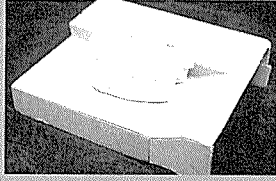
건축개요

- 대지위치 대전광역시 서구 도마동 439-6 배재대학교
- 지역지구 자연녹지지구, 최고고도지구
- 대지면적 206,105.20㎡
- 건축면적 6,674.55㎡
- 연면적 21,638.03㎡
- 건폐율 10.46%
- 용적률 36.58%
- 설계담당 홍승훈, 윤보근, 장기태, 부상훈, 박준구, 곽해중
- 규모 지하1층, 지상5층
- 구조 철근콘크리트조
- 최고높이 20m
- 주요설비방식 F.C.U 냉·난방+정공기 방식(VAV)
- 주요용도 대학본부, 교수 연구실, 강의실 및 집회시설
- 외부마감 ㉠30 화강석 버너구이, ㉠18 투명 복층유리
- 내부마감 아크릴계 수성 페인트
- 건축주 배재대학교
- 시공주 (주)대양건설
- 설계기간 '96. 8 ~ '97. 4.
- 공시기간 '97. 8 ~ '99. 4.



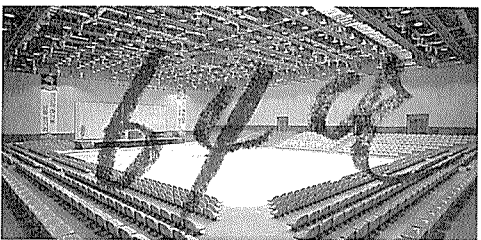
64만 64만 64만 64만 64만

64단 64단 64단 64단

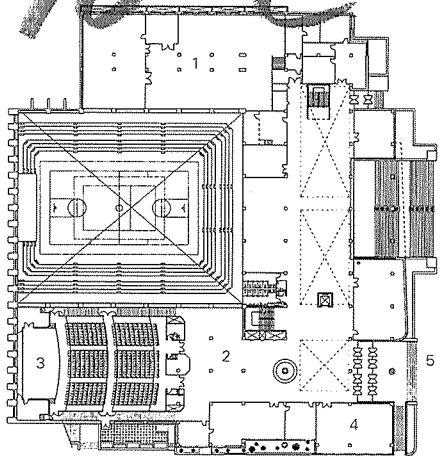


64단 64단 64단 64단

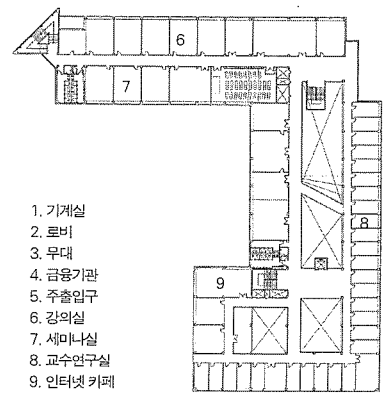
3D 모델



16 단



1층 평면도



02 5 10

5층 평면도

- 1. 기계실
- 2. 로비
- 3. 무대
- 4. 금융기관
- 5. 주출입구
- 6. 강의실
- 7. 세미나실
- 8. 교수연구실
- 9. 인터넷 카페