

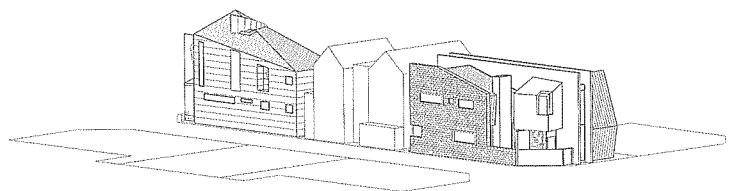
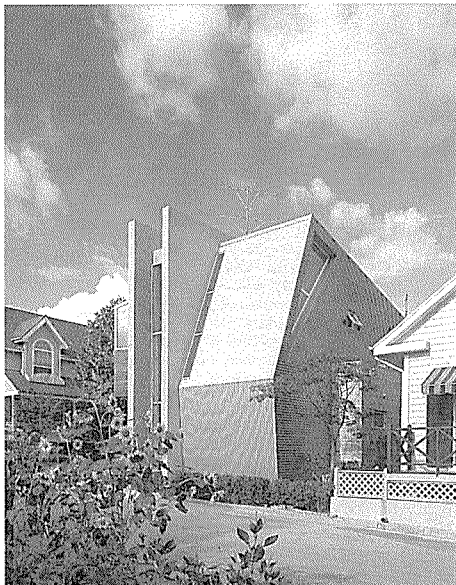
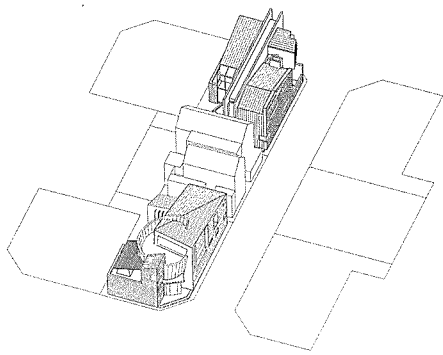
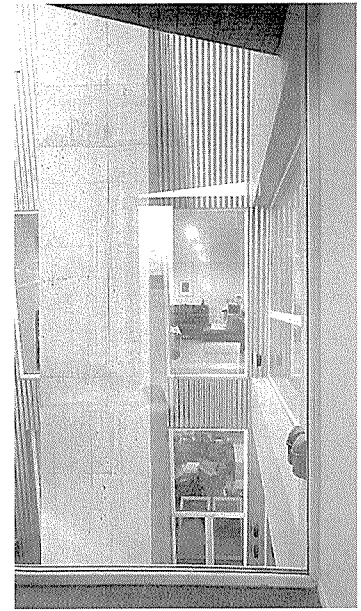
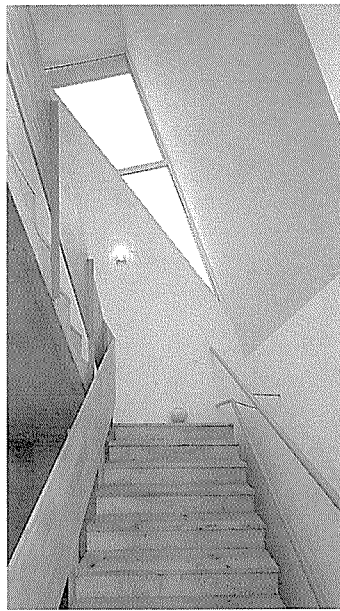
일산주택 III

Ilsan Residence

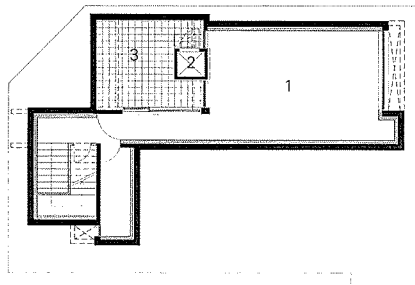
임재용 / O·C·A 건축사사무소
Designed by Im Jae-Yong

건축개요

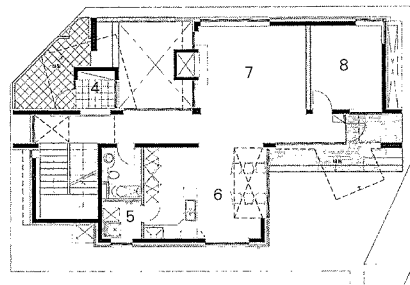
대지위치	경기도 고양시 일산구 마두동 971-1
지역지구	전용주거지역
대지면적	237.9㎡
건축면적	115.57㎡
연면적	274.68㎡
건폐율	48.58%
용적률	83.66%
규모	지하 1층, 지상 2층
주차대수	2대
구조	철근콘크리트조
외부미감	벽 / 콘크리트 블록, 컬러강판, 코팅합판, 널패턴 노출콘크리트, 드라이비트 지붕 / 컬러강판



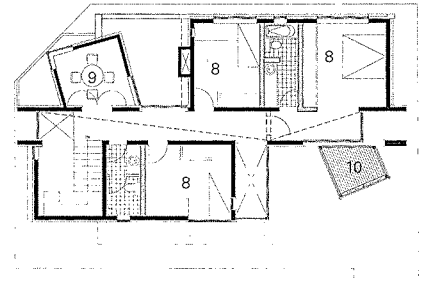
- 1. 가족실
- 2. 창고
- 3. 선반
- 4. 현관
- 5. 다용도실
- 6. 식당/주방
- 7. 거실
- 8. 침실
- 9. 서재
- 10. 발코니



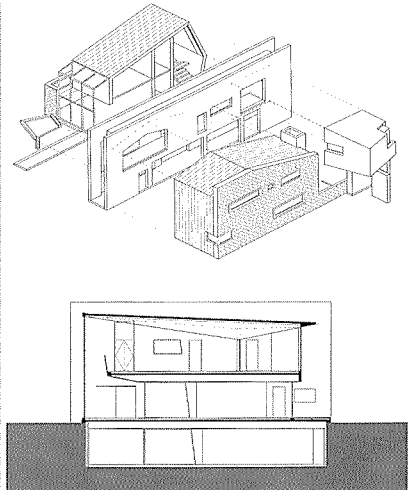
지하층 평면도



1층 평면도



2층 평면도



단면도

