

. . .

I.

Dragoo

5

가

Anderegg 3

가

Randall

가

가

가

Goon

. Herbert

가

Dragoo

. Andreasen

가

. Hany

가

Rud

가

가

가

Bollen, Quirynen

가

Ra=0.2 μ m(Ra : average surface roughness)

Pitaru

in vitro

Nishimura

. Cogen

가

. Khatiblou

가

Sommerman

가

in vitro

가

, Kan

가

SEM

가

. Caughman

Bruce

II.

1.

20 . 2

1) 1 : .

2) 2 : 4 : silicone
(GC Fuji II LC) mold ,

3) 3 : (3M. 20
Restorative Z100) .

4) 4 : (Cavex . Holland)
3.
2.

1) : 3 × 3 × 2mm 1% penicillin, streptomycin
2) antibacterial solution(Gibco . USA),
3) 10% FBS(Gibco . USA), DMEM(Gibco .
1 : USA) 3

(Gracey curette, Hu - Friedy co.) 5 .

PBS gauze 95% , 37
250 270 15 95% , 5% CO₂ .
0.25% trypsin - EDTA 3
Mℓ .

2 : 50 4.
20

mylar strip

가 24 microwell
well 가 1

3 : 50 × 10⁵/Mℓ . 95% ,

Table 1. Experimental Groups

	Sample size		
	Cell counting	SEM	
1 :	12	2	4
2 :	12	2	4
3 :	12	2	4
4 :	12	2	4

a) NRD : Normal Root Dentin

b) R - M GIC : Resin - Modified Glass Ionomer cement

c) CR : Composite Resin

d) DA : Dental Amalgam

37, 95%, 5% CO₂ (Hobson, England)

3 . Ra(average surface roughness)
 Rt(maximal peak - to - valley height)

5. ANOVA, multiple comparion

3 PBS Person correlatison

microwell 가 .

0.25% trypsin - EDTA III.

trypan blue hemocy -

tometer 1.

ANOVA multiple comparison .

6. SEM (Table 1).

16.7 ± 4.41 (× 10³)

8.13 ± 3.63 (× 10³),

0.72 ± 3.33 (× 10³) (P<0.05)

2 14.0 ± 4.15 (× 10³)

PBS 1 25% (P<0.05).

critical point dryer 가

aluminum stub . 4

gold coating 가

7.

2. Scanning Electron Microscopy Examination

4 Form Talysurf(Rand Tayler -

Table 2. The number of attached cell(× 10³)

	1	2	3	4	5	6	7	8	9	10	11	12	Mean ± SD
Teeth	20.8	9.6	23.2	9.6	18.8	12.8	19.6	19.2	14.4	16.8	20.4	15.6	16.7 ± 4.41
RM - GI	8.8	9.6	11.6	18.4	13.2	18.8	14.4	19.6	8.8	10.4	16.0	18.4	14.0 ± 4.15
Resin	4.4	5.2	9.2	5.6	4.0	9.2	8.8	4.8	9.6	8.0	16.0	12.8	8.13 ± 3.63
Amalgam	0.8	0.8	0.8	0.8	0.4	0.8	0.8	0.0	0.8	1.2	1.2	0.4	0.72 ± 3.33

Group 1,2,3,4 : See Table 1

Table 3. Multiple comparisons of attached cell number

	1	2	3	4
1			*	*
2			*	*
3	*	*		*
4	*	*	*	

*. The mean difference is significant at the 0.05 level

level

Group 1,2,3,4 : See Table 1

(1) 1 ()

Table 4. The value of mean surface roughness

	Mean surface roughness	
	Ra(μm)	Rt(μm)
1 ()	0.6972 \pm 0.104	5.233 \pm 1.673
2 (RM - GI)	0.0822 \pm 0.009	0.798 \pm 0.106
3 (Resin)	0.0875 \pm 0.005	0.999 \pm 0.145
4 (Amalgam)	4.2145 \pm 0.985	32.29 \pm 7.772

Group 1,2,3,4 : See Table 1

Table 5. Multiple comparison of surface roughness(Ra, Rt)

	1	2	3	4
1				*
2				*
3				*
4	*	*	*	

*. The mean difference is significant at the 0.05 level

가 .
 (2) 2 ()
 1
 (3) 3 ()
 가
 (4) 4 ()
 3.
 Ra(average surface roughness)
 Rt(maximal peak to valley height)
 (Table 3), Ra Rt
 .(pearson correlation : 0.676)
 1 Ra=0.69 \pm 0.10 μm , Rt=5.23 \pm 1.67 μm ,
 2 Ra=0.08 \pm 0.009 μm , Rt=0.79 \pm 0.10 μm ,
 3 Ra=0.08 \pm 0.005 μm , Rt=0.99 \pm 0.14 μm
 가
 4 Ra=4.21 \pm 0.98 μm , Rt=32.29 \pm 7.72 μm

, Ra pearson correlation -0.593, Rt pearson correlation -0.580 .

IV.

가 가 .
, Pitaru in vitro
,
. Cogen 가
가
가 가 .
가 가
, , , 가
(Sommerman).
가 Isidor, 1 가 가
Aukhil 가
Sommerman 가
Hou Rompen 가
가 가
, 가 ,
, 가
가 . Aleo
가
가
가 in vitro
가
in vitro 가 .

in vivo 가
 가
 가
 Khatiblou 1mm notch in vivo
 가
 Nishimura V.
 가
 가
 가 1. 가
 Pellen - Mussi (p<0.05).
 3 가 1, 2, 2.
 가
 가
 3.
 가 (p<0.05)
 가 4.

가가 , 가

가

가

VI.

1. Payne, J.M., Cobb, C.M., Rapley, J.W., Killoy, W.J., and Spencer, P. : Migration of human gingival fibroblasts over guided tissue regeneration barrier materials. *J. Periodontol.*, 67 : 236 - 244, 1996.
2. Harris, R.J. : Treatment of an endodontic perforation with a restoration and a root coverage gingival graft. *J. Periodontol.*, 66 : 646 - 652, 1995.
3. Goon, W.Y., and Lundergan, W.P. : Redemption of a perforated furcation with a multidisciplinary treatment approach. *J. Endod.*, 11 : 576 - 579, 1995.
4. Dumfahrt, H., and Moschn, I. : A new approach in restorative treatment of external root resorption. A case report. *J. Periodontol.* 69 : 941 - 947, 1998.
5. Andreasen, J.O., Munksgaard, E.C., Fredebo, L., and Rud, J. : Periodontal tissue regeneration including cemento - genesis adjacent to dentin - bonded retrograde composite fillings in humans. *J. Endod.*, 3 : 151 - 153, 1993

6. Drago, M.R. : Resin - ionomer and hybrid - ionomer cements : part II. Human clinical and histologic wound healing responses in specific periodontal lesion. *Int. J. Periodont. Rest. Dent.*, 17 : 75 - 87, 1997.
7. Drago, M.R. : Resin - ionomer and hybrid - ionomer cements : part I. comparison of three materials for the treatment of subgingival root lesions. *Int. J. Periodont. Rest. Dent.*, 16 : 595 - 601, 1996.
8. Anderegg, C.R. The treatment of class III maxillary furcations using a resin - ionomer. a case report. *J. Periodontol.*, 69 : 948 - 950, 1998.
9. Pitaru, S., Gray, A., Aubin, J.E., and Melcher, A.H. : The influence of the morphological and chemical nature of dental surfaces on the migration, attachment , and orientation of human gingival fibroblasts in vitro. *J. Period. Res.*, 19 : 408 - 418, 1984
10. Cogen, R.B., Al - Joburi, W., Gantt, D.G., and Denys, F.R. : Effect of various root surface treatments on the attachment and growth of human gingival fibroblasts : histologic and scanning electron microscopic evaluation. *J. Clin. Periodontol.*, 11 : 531 - 539, 1984.
11. Somerman, M.J., Foster, R.A., Imm, G.M., Sauk, J.J., and Archer, S.Y. : Periodontal ligament cells and gingival fibroblasts respond differently to attachment factors in vitro. *J. Periodontol.*, 60 : 73 - 77, 1989.
12. Pellen - Mussi, P., Fravallo, P., Guigand, M., Bonnaure - Mallet, M. : Evaluation of cellular proliferation on

- collagenous membranes. *J. Biomed. Mater. Res.*, 36 : 331 - 336, 1997.
13. Kan, K.C., Messer, L.B., and Messer, H.H. : Variability in cytotoxicity and Fluoride release of resin - modified glass - ionomer cements. *J. Dent. Res.*, 76 : 1502 - 1507, 1997.
 14. Caughman, W.F., Caughman, G.B., Dominy, W.T., and Schuster, G.S. : Glass ionomer and composite resin cements : effects on oral cells. *J. Prosthet. Dent.*, 63 : 513 - 521, 1990.
 15. Bruce, G.R., McDonald, N.J., and Sydiskis, R.J. : Cytotoxicity of retrofill materials. *J. Endod.*, 19 : 288 - 292, 1993.
 16. Makkawy, H.M., Koka, S., Lavin, M.T., and Ewoldsen, N.O. : Cytotoxicity of root perforation repair materials. *J. Endodontics.*, 24 : 477 - 479, 1998.
 17. Bollen, M.L., Lambrechts, P., and Quirynen, M. : Comparison of surface roughness of oral hard materials to the threshold surface roughness for bacterial plaque retention : A review of the literature. *Dent. Mater.*, 13 : 258 - 269, 1997.
 18. Quirynen, M., and Bollen, C.M.L. : The influence of surface roughness and surface - free energy on supra - and subgingival plaque formation in man. A review of the literature. *J. Clin. Periodontol.*, 22 : 1 - 14, 1995.
 19. Nishimura, K., Takada, K., and Yamaoka, A. : In vitro interaction between gingival fibroblasts and various root surfaces. *J. Electron. Microsc.*, 38 : 24 - 33, 1989.
 20. Khatiblou, F.A., and Ghodss, A. : Root surface smoothness or roughness in periodontal treatment. : A clinical study. *J. Periodontol.*, 54 : 365 - 367, 1983.
 21. Hou, L.T., and Yaeer, J.A. : Cloning and characterization of human gingival and periodontal ligament fibroblasts. *J. Periodontol.*, 64 : 1209 - 1218, 1993.
 22. Mariotti, A., and Cchran, D.L. : Characterization of fibroblasts derived from human periodontal ligament and gingiva. *J. Periodontol.*, 61 : 103 - 111, 1990.
 23. Rompen, E.H., Nusgens, K.B., and Lapiere, C.M. : Kinetic aspects of gingival

- and periodontal ligament fibroblast attachment to surface - conditioned dentin. *J. Dent. Res.*, 72 : 607 - 612, 1993.
24. Raulin, L.A., McPherson, J.C., McQuade, M.J., and Hanson, B.S. : The effect of nicotine on the attachment of human fibroblasts to glass and human root surfaces in vitro. *J. Periodontol.*, 59 : 25 - 31, 1988.
 25. Geurtsen, W., Lehmann, F., Spahl, W., and Leyhausen, G. : Cytotoxicity of 35 dental resin composite monomers/additives in permanent 3T3 and three human primary fibroblast cultures. *J. Biomed. Mater. Res.*, 41 : 474 - 480, 1998.
 26. Peltola, M., Salo, T., and Oikarinen, K. : Toxic effects of various retrograde root filling materials on gingival fibroblasts and rat sarcoma cells. *Endod. Dent. Traumatol.*, 8 : 120 - 124, 1992
 27. Saltzman, W.M., Parsons - Wingerter, P., Leong, K.W., and Lin, S. : Fibroblast and hepatocyte behavior on synthetic polymer surfaces. *J. Biomedical Materials Research.*, 25 : 741 - 759, 1991.
 28. Brunette, D.M. : The effects of implant surface topography on the behavior of cells. *Int. J. Oral. Maxillofac. Implants.*, 3 : 231 - 246, 1988.
 29. Kaga, M., Seale, N.S., Hanawa, T., Ferracane, J.L., Waite, D.E., and Okabe, T. : Cytotoxicity of amalgams, alloys and their elements and phases. *Dent. Mater.*, 7 : 68 - 72, 1991.
 30. Kaga, M., Seale, N.S., Hanawa, T., Ferracane, J.L., and Okabe, T. : Cytotoxicity of amalgams. *J. Dent. Res.*, 67 : 1221 - 1224, 1988.
 31. Shay, J.W., and Wakler, C. : Introduction to cells in culture as studied by SEM. In : Bell PB, ed. *Scanning Electron Microscopy of cells in culture.*, : 1 - 8, 1984.
 32. Leknes, K.N. : The influence of anatomic and iatrogenic root surface characteristics on bacterial colonization and periodontal destruction : A review. *J. Periodontol.*, 68 : 507 - 516, 1997.
 33. Peumans, M., Van Meerbeek, B., Lambrechts, P., Vanherle, G., and Quirynen, M. : The influence of direct composite additions for the correction of tooth form and/or position on periodontal health. A retrospective study. *J. Periodontol.*, 69 : 422 - 427, 1998.
 34. Wikesj, U.M., Crigger, M., Nilvus, R., and Selvig, K.A. : Early healing events at the dentin connective tissue interface. light and transmission electron microscopy observations. *J. Periodontol.*, 62 : 5 - 14. 1991.
 35. Fardal, O., and Lowenberg, B.F. : A quantitative analysis of the migration, attachment, and orientation of human gingival fibroblasts to human dental root surfaces in vitro. *J. Periodontol.*, 61 : 529 - 535.1990
 36. Wirthlin, M.R., and Hancock, E.B. : Biologic preparation of diseased root surfaces. *J. Periodontol.*, 51 : 291 - 297, 1980.
 37. Sunzel, B., Sderberg, T.A., Johansson, A., Hallmans, G., and Gref, R. : The protective effect of zinc on rosin and resin acid toxicity in human polymorphonuclear leukocytes and

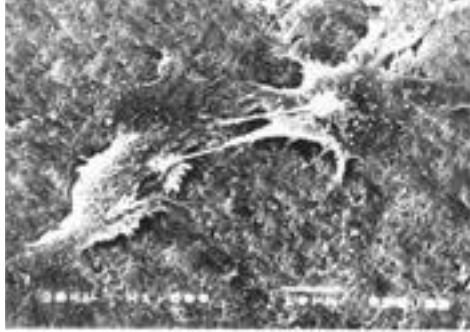


Figure 1



Figure 2

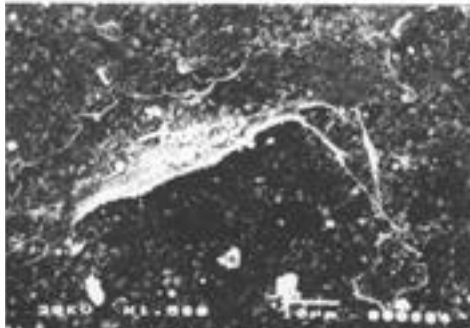


Figure 3

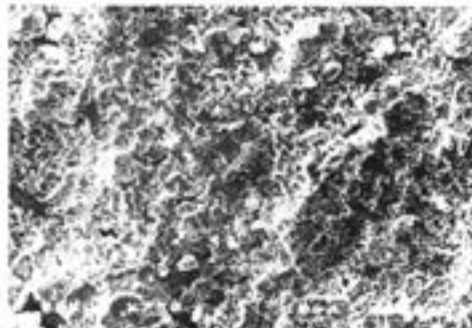


Figure 4

human gingival fibroblasts in vitro. *J. Biomed. Mater. Res.*, 37 : 20 - 28, 1997.

38. Breault, L.G., Schuster, G.S., Billman, M.A., Hanson, B.S., Kudryk, V.L., Pashley, D.H., Runner, R.R., and McPherson, J.C. : The effects of intracanal medicaments, fillers, and sealers on the attachment of human gingival fibroblasts to and exposed dentin surface free of a smear layer. *J. Periodontol.*, 66 : 545 - 551, 1995.

Figure 1. Control root dentin specimen(SEM ×1,500)

Surface was covered by smear layer, therefore, showed a relatively irregular topography. Cell morphology was stellate, flat with the many surface bleb, filopodia, lamellopodia, and attached to root surface, adjacent cells intimately. Some cells are extremely flat.

Figure 2. Resin modified glass ionomer specimen(SEM ×1,500)

Surface of specimen was very smooth appearance. Cells were spindle, flat shape and exhibited the attachment apparatus. Relatively firm attachment was examined.

Figure 3. Resin specimen(SEM ×1,500)

Cells showed a relative few attachment apparatus than root dentin, resin modified glass ionomer specimens, and cell shape was somewhat round, long.

Figure 4. Amalgam specimen(SEM ×750)

Attached cell was not observed. Only considerable rough surface was seen.

- Abstract -

Attachment of Human Gingival Fibroblast to Various Subgingival Restorations : A Comparative Study in Vitro

Eun - Suk Lee, In - Taek Song, Jeong - Su Lim, Hyung - Seop Kim
Department of Periodontology and
Research Institute of Oral Bio - Science,
College of Dentistry, Chonbuk National
University

When mucoperiosteal flaps are positioned and sutured to desirable position, the wound contains several interface between tissues which differ fundamentally in composition & biological reaction. Thus the C - T surface of the flap will, on one hand, oppose another vascularized surface, and on the other, the avascular dental material for example, when root resoptions, fractured root, endodontic perforation, deep root carious lesions were filled with amalgam, glass ionomer, resin etc.

Recently, a number of case report described the successful treatment of a subgingival root lesion with restorative material & free gingival graft, open flap surgery, but more objective research was needed.

Most of study on restorative materials were concerned for cytotoxicity not for actual healing event on that materials and its influencing factors such as biocompati -

bility, surface wettability, surface topogra - phy.

The aim of this in vitro study was to evaluate the effect of amalgam, resin modi - fied glass ionomer, composite resin per se, and their surface roughness on the growth of human gingival fibroblast.

The cells were obtained and placed on culture flask and incubated for 3 days with the prepared test materials. Then count the attached cell number with hemocytome - ter, (n=12) and 2 samples were examined with SEM about attachment cell morpholo - gy.

Another 4 samples were evaluated on their surface roughness with Talysurf and average surface roughness value (Ra) were obtained.

Statistical difference in attached cell number, roughness value were analyzed using ANOVA.

The number of attached cell was as fol - lows, for root dentin specimen 16.7 ± 4.41 , resin modified glass ionomer 14.0 ± 4.15 , resin 8.13 ± 3.63 , amalgam 0.72 ± 3.33 ($\times 10^3$). Between root dentin and resin - modi - fied glass ionomer, no significant difference was observed, but resin, amalgam showed a significant less cell numbers than for root dentin, resin modified glass ionomer cement.

SEM examination expressed many cell surface attachment apparatus in root dentin and resin modified glass ionomer speci - mens. For resin specimen, cell attachment was observed but exposed less apparatus.

The average surface roughness value are following results. Dentin specimen 0.6972 ± 0.104 , resin modified glass ionomer 0.0822

± 0.009 , resin 0.0875 ± 0.005 , amalgam $4.2145 \pm 0.985 (\mu\text{m})$. Between root dentin, resin - modified glass ionomer, and resin, no significant difference was observed, but amalgam showed a significant more rough surface than other groups.

When evaluated the interrelationship between cell attachment and surface roughness, therefore, there was weak reverse correlation. (pearson correlation : - 0.593)

These results suggest that resin modified glass ionomer have the favorable healing potential when used for subgingival restoration. And for relationship between cell attachment and surface characteristics, further investigations were needed.