

## **A Newly Recorded Species of the Genus *Nesticella* (Aranea, Nesticidae) in Korea**

**Joo Pil Kim, Jung Sun Yoo and Young Bo Lee\***

(Department of Applied Biology, Dongguk University, Seoul 100-715;

\*Department of Sericulture and Entomology, National Institute of Agricultural Science and  
Technology, Suwon 441-100, Korea)

### **ABSTRACT**

One nesticid spider, *Nesticella mogera* (Yaginuma, 1972), collected from a paddy field is reported for the first time from Korea. The species is closely allied to *Nesticella brevipes* (Yaginuma, 1970), but is characterized by its male paracymbium and female epigynal scape.

Key words: new record, Nesticidae, *Nesticella mogera*, Korea.

### **INTRODUCTION**

Korean Nesticid spiders are common to both in cave and under leaf litter (Paik, 1996). For this family, the following four species have been known in Korea: *Nesticella brevipes* (Yaginuma, 1970), *Nesticella quepartensis* Paik et Namkung, 1969, *Nesticus coreanus* Paik et Namkung, 1969, *Nesticus flavidus* Paik, 1978 an by Paik and Kim (1994) and Kim (1998). In addition to these four species, we here report an additional species, *Nesticella mogera* (Yaginuma, 1972).

### **DESCRIPTION**

Genus *Nesticella* Lehtinen et Saaristo 1980

***Nesticella mogera* (Yaginuma, 1972) 쇠굴아기거미 (신칭) (Figs. 1-7)**

*Nesticus terrestris* Yaginuma, 1970, p. 390, figs. 3-8.

*Nesticus mogera* Yaginuma, 1972, p. 621.

*Howaia mogera* : Lehtinen et Saaristo, 1980, p. 53, figs. 7-9.

*Nesticella mogera* : Wunderlich, 1986, p. 283.

**Material examined.** 1 ♀, 1 ♂, Yoju, 24 Aug. 1998, Y. B. Lee; 2 ♀, 1 ♂, 1 juv., Yoju, 9 Sep. 1998, J. S. Yoo; 1 ♀, 1 juv., Yoju, 23 Sep. 1998, Y. B. Lee.

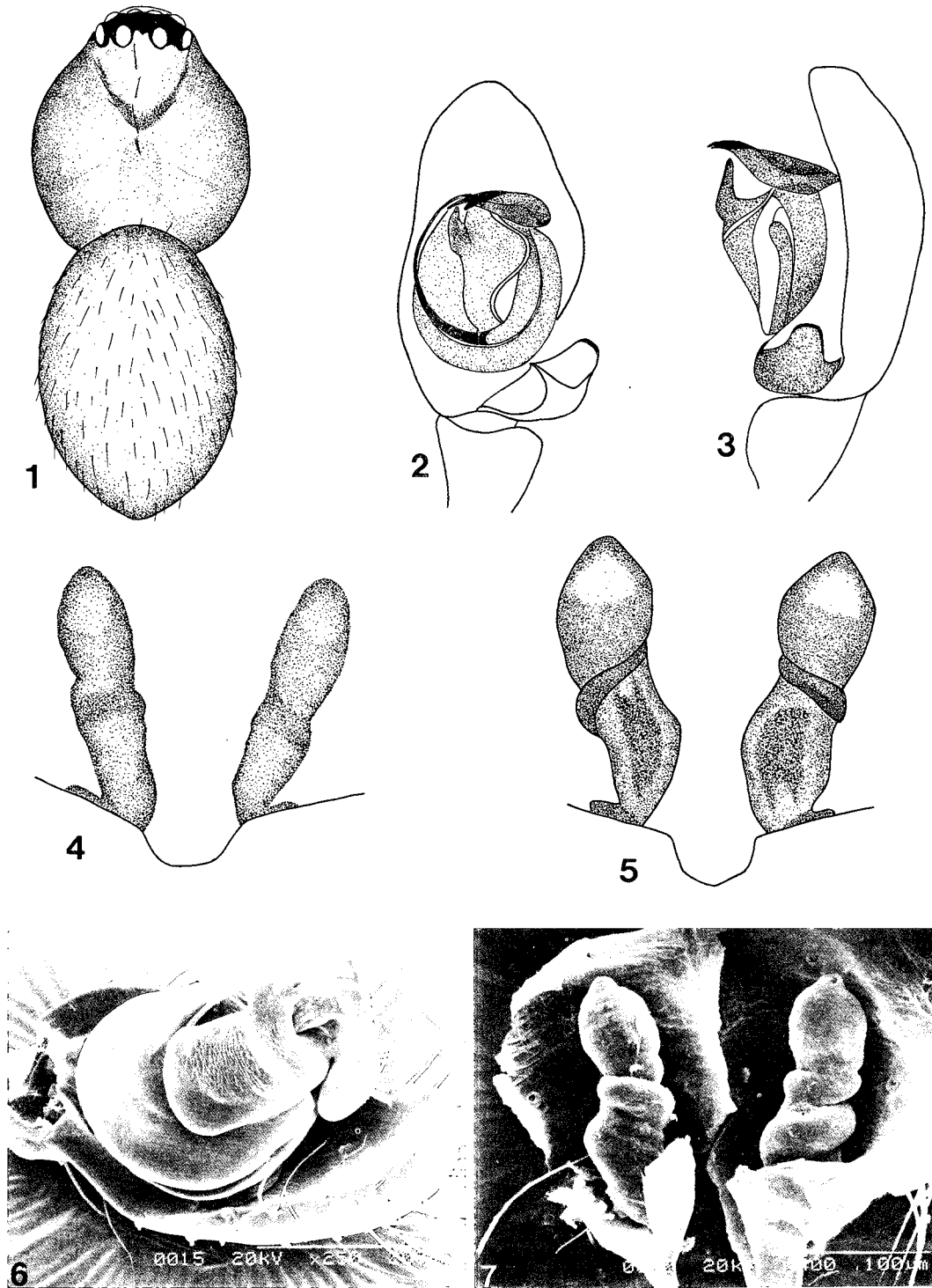
**Male.** Cephalothorax light yellowish brown with evident cervical grooves, radial furrows and median furrow. Cephalic part with a gray furcate marking. Several hairs present on the mid-line, both sides of head and in front of median furrow respectively. Anterior median eyes separated from each other by their diameter and from adjacent laterals also by their diameter. Anterior lateral eyes closely adjacent to posterior lateral eyes. Posterior median eyes separated from each other by slightly more than their diameter and from laterals by less than the diameter. Anterior eye row slightly retrocurved and posterior eye row almost straight or slightly procurved in dorsal view. Anterior eye row slightly procurved in front view. Median ocular quadrangle wider behind than in front in the ratio of 21 : 13, wider than long in the ratio of 21 : 17. Anterior median eyes the smallest and the remainder subequal. Eye-ratio, AME < ALE = PLE = PME (3 : 4 : 4 : 4). All eyes on black spots. anterior median eyes black and the rest pearl-white. Clypeus slightly shorter than the height of median ocular quadrangle, concave immediately below eyes and slightly slanting forward. Chelicerae brown, without boss, armed with 3 prominent promarginal teeth. Labium yellowish brown with white reborded apex, much wider than long (29 : 19), not extending beyond the middle of endite. Endite the same as labium in color, slightly convergent. Sternum yellowish brown with gray spots, slightly longer than wide (55 : 53), convex, provided with sparsely hairs and bluntly pointed between 4th coxae, which are separated by their width. Heart shaped sternum is fused with labium. Legs yellowish brown, becoming darker towards the ends, without annulations and armed with 2 upper claws and 1 lower claw. Leg formula 1423. Leg index 169 : 113 : 86 : 131. Leg I/C 5.67. Abdomen gray, oval, rather pointed posteriorly, with sparse hairs and no pattern present. Male palps with a distinct paracymbium (Fig.2), which is like a three-pronged spear with rounded base

**Female.** Similar to male but the scape of epigynum is projecting as shown in figs. 4, 5.

**Measurements (mm).** Body length 2.18; carapace length/width 1.03/0.92; abdomen length/width 1.25/0.83; sternum length/width 0.61/0.58; clypeus height 0.15; chelicerae 0.37/0.18; endite length/width 0.32/0.21; labium length/width 0.09/0.22; head width 0.53.

**Diagnosis.** *Nesticella mogera* is closely allied to *Nesticella brevipes* but the trident-shaped paracymbium of the male palp is specially distinctive. The projection of epigynal scape is beyond

Leg	Femur	Patella+Tibia	Metatarsus	Tarsus	Total
I	1.84	1.48	1.72	0.08	5.84
II	1.32	1.44	1.04	0.72	4.52
III	1.04	1.12	0.76	0.52	3.44
IV	1.60	1.76	1.24	0.64	5.24



**Figs. 1-7.** *Nesticella mogera*. 1. Body, male; 2. Palpal organ, Ventral; 3. Palpal organ, retrolateral; 4. Epigynum; 5. Genitalia, dorsal; 6. palpal organ; 7. genitalia, dorsal.

epigastric furrow, and narrower and more rapidly tapering towards at the tip than that of *N. brevipes*.

**Distribution.** Korea, China, Japan, Hawaii, Fiji.

## REFERENCE

- Kim, J. P., 1998. A list of Korean spiders (revised in 1998). Korean Arachnol., **14**(1): 9-54.
- Lehtinen P. T. and Saaristo M. I., 1980. Spiders of the Oriental-Australian region. II. Nesticidae. Ann. Zool. Fennici., **17**: 47-66.
- Paik, K. Y., 1996. A newly record species of the Genus *Nesticus* Thorell, 1869 (Araneae, Nesticidae) from Korea. Korean Arachnol., **12**(2): 71-75.
- Paik, K. Y. and Kim J. P., A List of Korean Spiders (revised in 1993). Korean Arachnol., **10**(1/2): 107-156.
- Platnick, N. I., 1993. Advances in Spider Taxonomy 1988-1991 with synonymies and transfers 1940-1980. New York Entomological Society, pp. 178-179.
- Platnick, N. I., 1997. Advances in Spider Taxonomy 1992-1995 With Redescriptions 1940-1980. New York Entomological Society, p. 247.
- Yaginuma, T. 1970. Two new species of small nesticid spiders of Japan. Bull. natn. Sci. Mus., Tokyo. **13**: 385-394.
- Yaginuma, T. 1972. Revision of the short-legged nesticid spiders of Japan. Bull. natn. Sci. Mus. Tokyo. **15**: 619-622.

RECEIVED: 30 April 1999

ACCEPTED: 10 July 1999

한국산 쇠굴아기거미속 (거미목, 굴아기거미과)의 1미기록종

김 주 필 · 유 정 선 · 이 영 보\*

(동국대학교 응용생물학과: \*농업과학기술원 잠사곤충부)

요 약

경기도 여주군의 논에서 채집된 굴아기거미과의 쇠굴아기거미 (*Nesticella mogera*)를 재기재하며, 한국 미기록종으로 보고한다. 지금까지 기록된 한국산 굴아기거미과는 모두 2속 5종이 된다.