

/ISSUES

()

1)

< >

.

.

.

.

(Health Needs)

(Scientific Opprtunities)

가

.

.

.

, , ,

, , ,

.

.

(National Institute of Health, NIH)

(1997

130)

NIH가

가

(Principles) (Mechanism)

. NIH

, , , , ,

NIH

,

NIH

1. NIH

NIH 21

가

(investigator - initiated grants),

가

NIH

가

가

(4)

2.

가

NIH가

Alzheimer

(lipid metabolism)

(cardiac muscle biology)

가

가

가

3.

가

NIH

가

AIDS, Ebola

, Alzheimer

1960

1970

DNA

(Human Genome Project)

가

NIH

가

Ebola

4.

NIH

NIH

가

NIH
가

가

가

NIH

가

가

가

NIH

가

가

NIH

NIH

5.

NIH

NIH

NIH

NIH

가,

NIH

6. (Opportunities)

가

NIH

가

NIH

(imaging)

(mapping)

NIH가

()

;

;

;

NIH

1887 Staten Island

NIH

2

1946 , NIH

(Extramural Program)

NIH

(Intramural Program,

NIH

NIH

가

NIH

NIH

가 가
가 (peer review system)

가

가 가

NIH

NIH
1947

NIH

가

가

가

1953

20

NIH

가

(National Institute of Allergy and Infectious Diseases 1948
, National Institute of Neurological Diseases and Blindness 1950), (National
Institute of Child Health and Human Development 1963 , National Institute on Aging 1974
) , (National Institute of General Medical Science 1963 National
Library of Medicine 1968 NIH) NIH

NIH

. NIH

NIH
Centers, Divisions)
. 1887

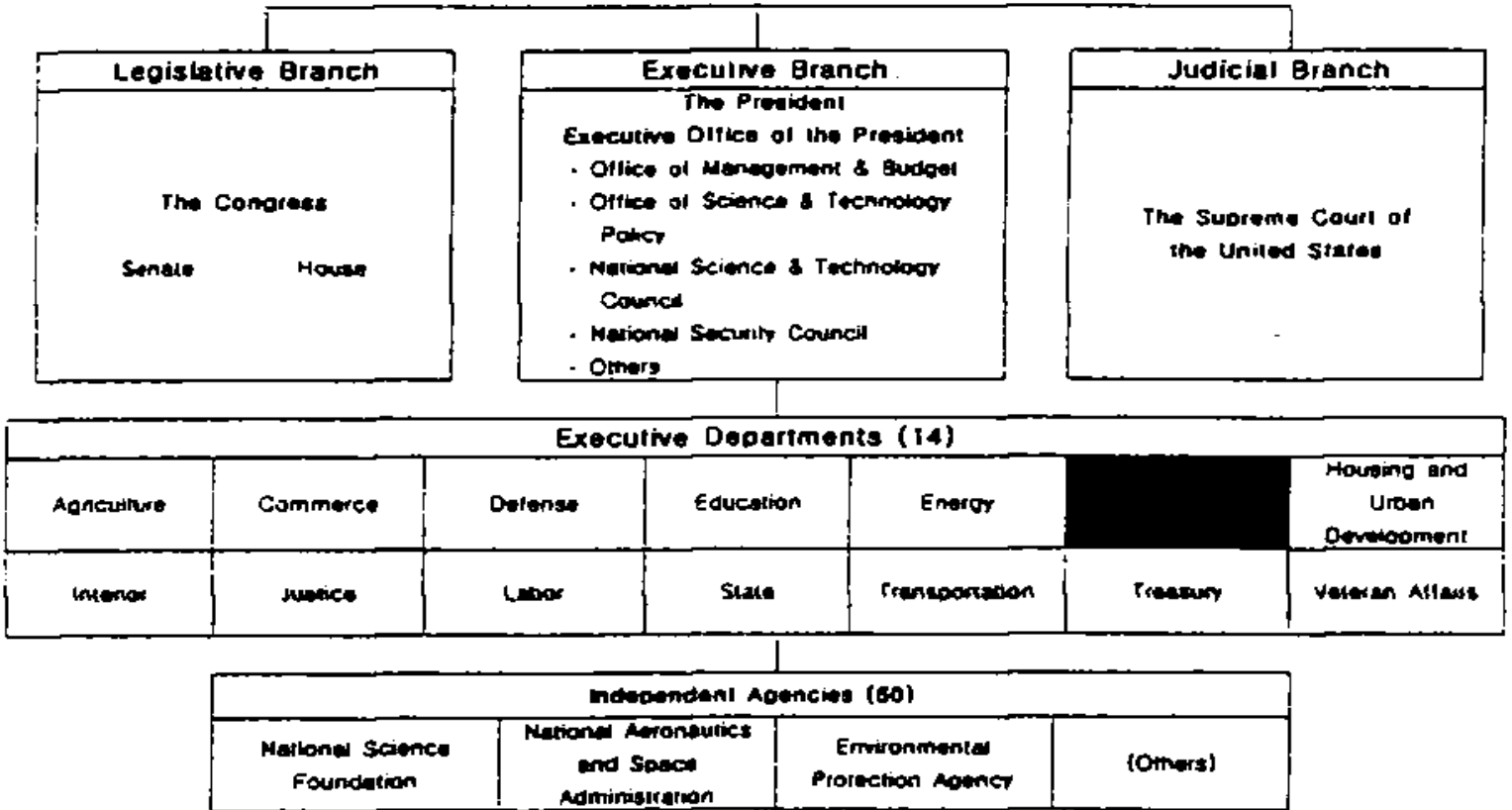
(3),

(1,2). NIH 24
300

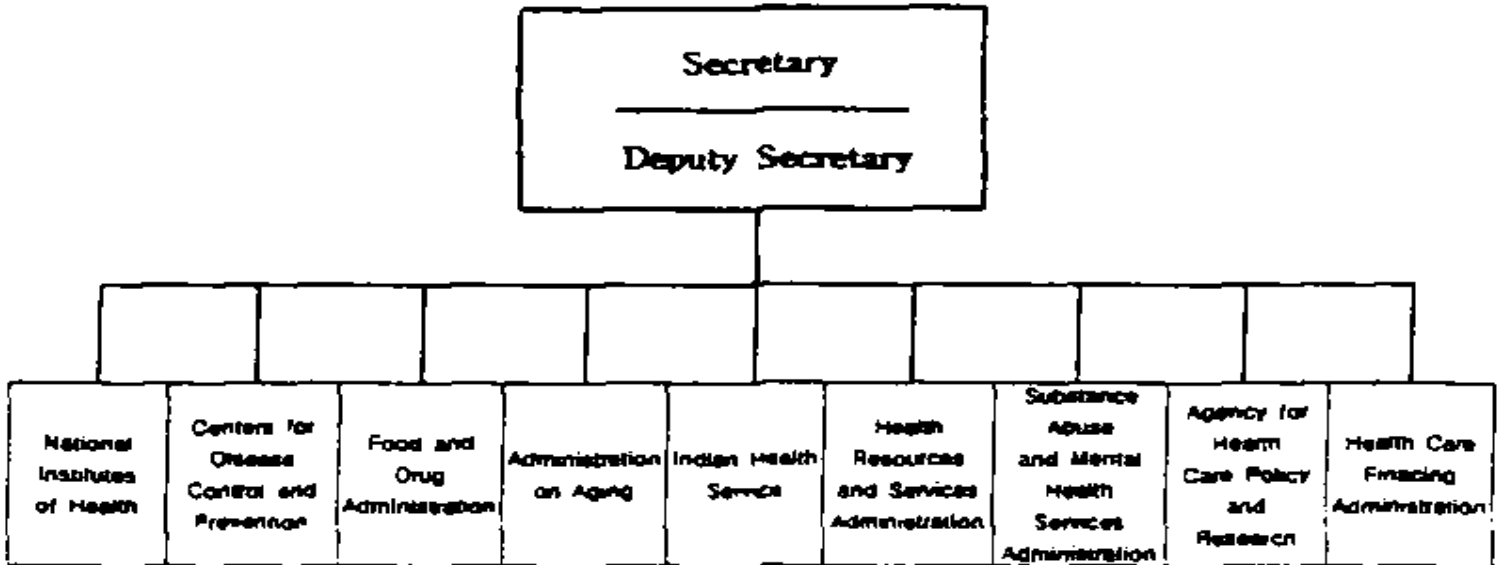
(Institutes,
75

< 1 >

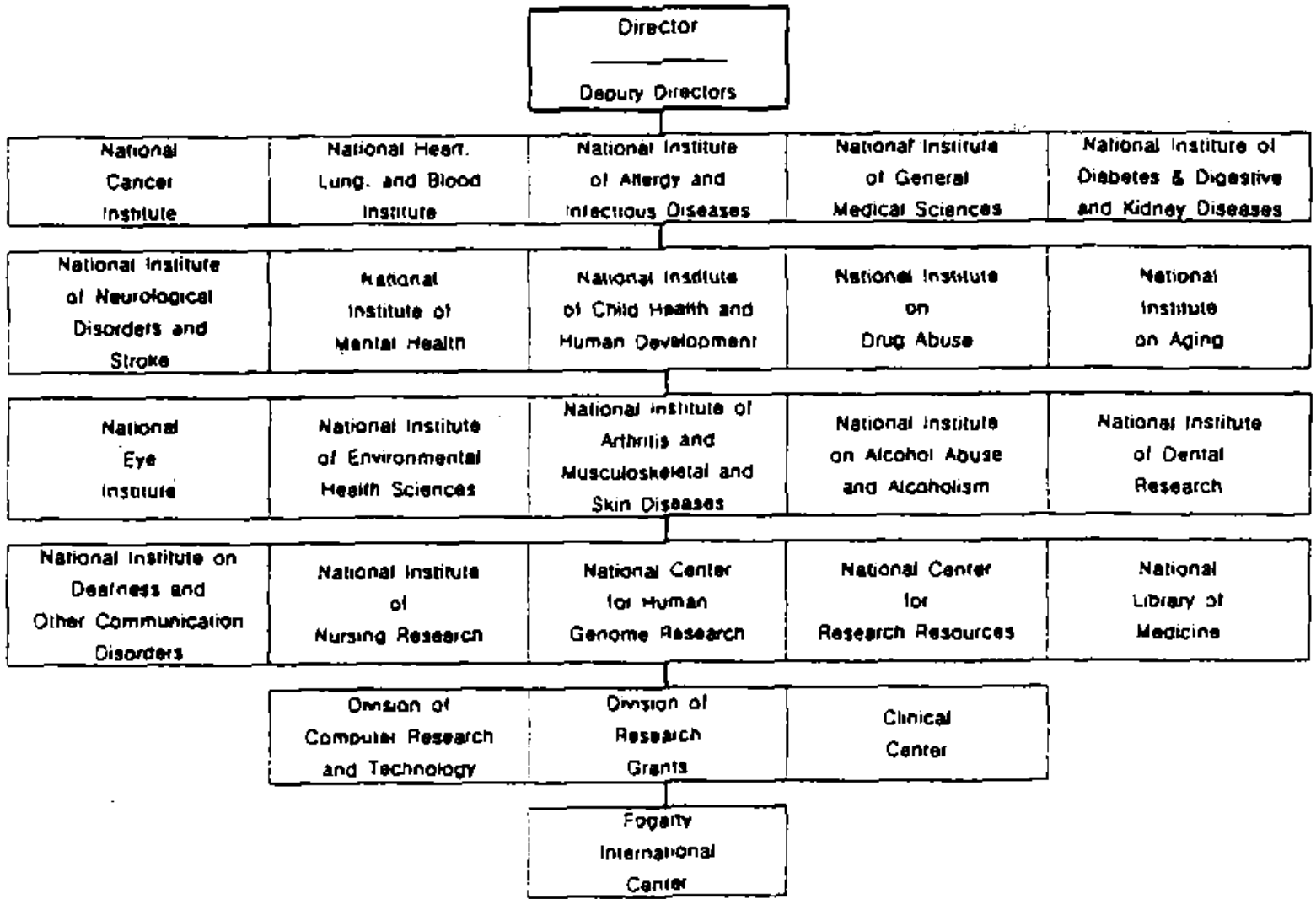
The Constitution



< 2 >



< 3 >



300

NIH

1998 136

가

NIH

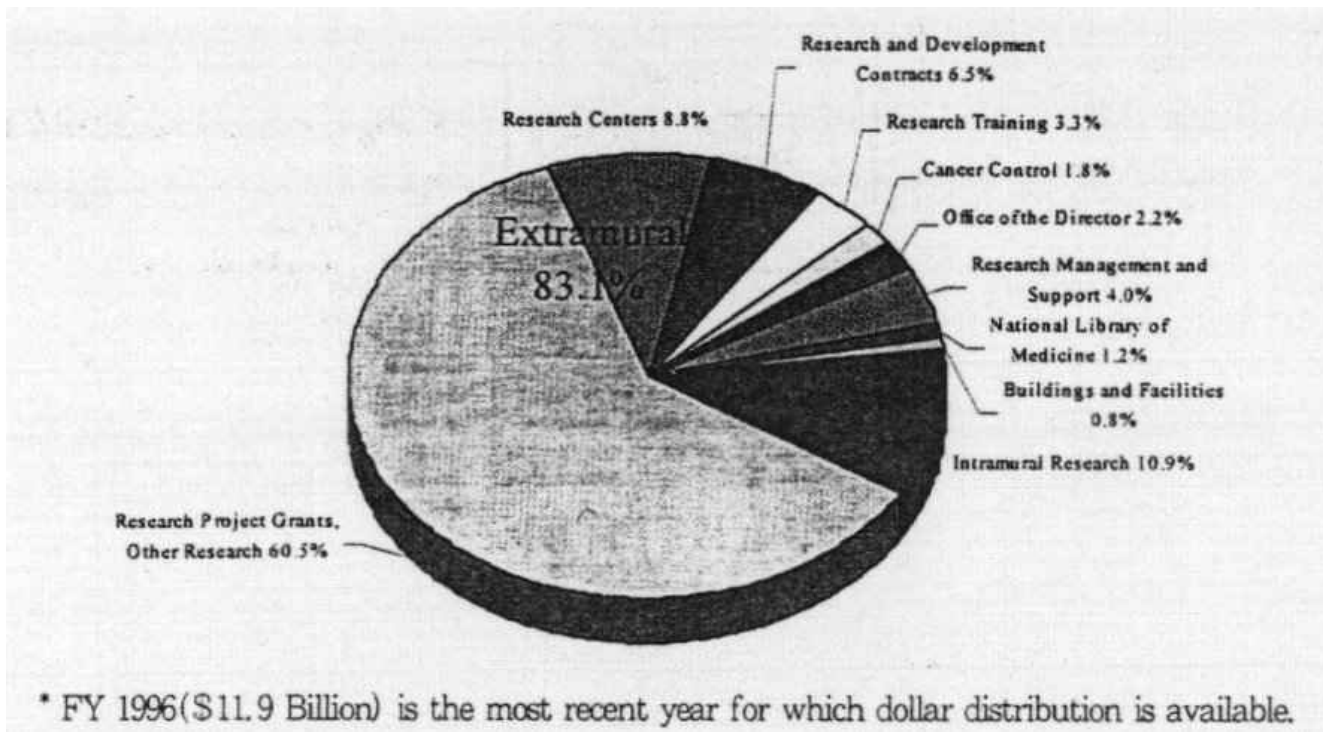
NIH

가

< 4 >

1996

*



NIH

가 가

가

30%

1996

NIH 11%가
(4).

, NIH 83%

NIH
(Research Project Grants: RPGs)

NIH 25,000RPGs(가
RPGs

R01 가

. 1996
)
(Multi - disciplinary)

(program project grant) . NIH가

NIH

(R&D Contracts)

NIH
taxol
NIH

NIH

(predoctor)

(postdoctor)

NIH

가

. NIH

4

가

25%

1) , (tel: 02 - 250 - 3125)