

# 일산주택1

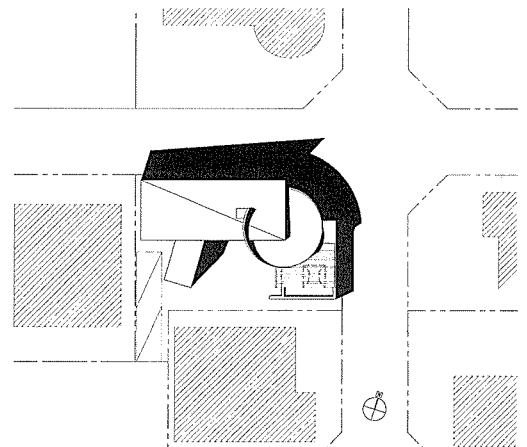
## Ilсан Residence 1

임재용/ 건축사사무소 오.씨.에이  
Designed by Lim Jae-Yong

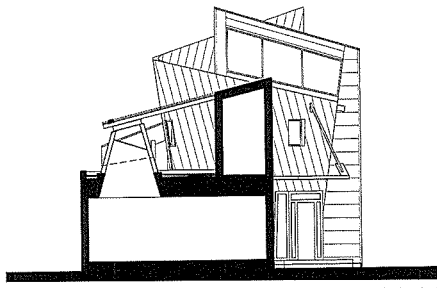
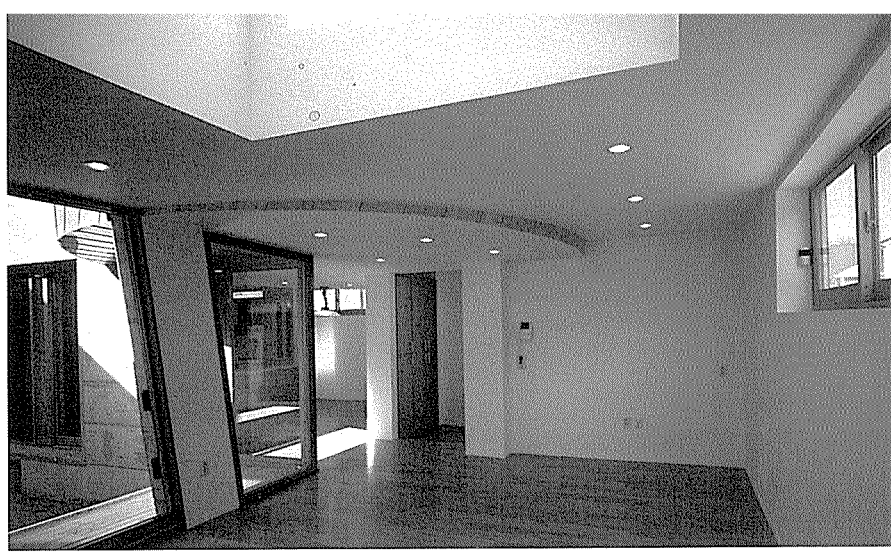


### 건축개요

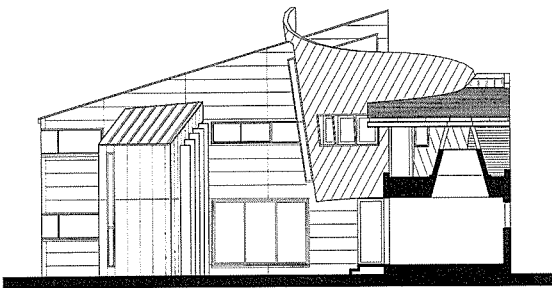
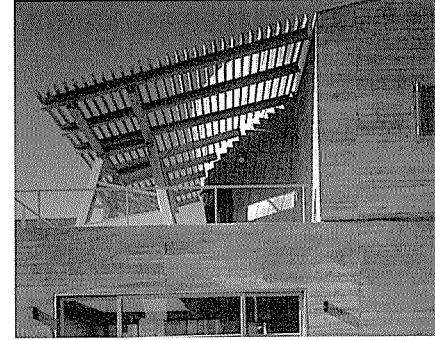
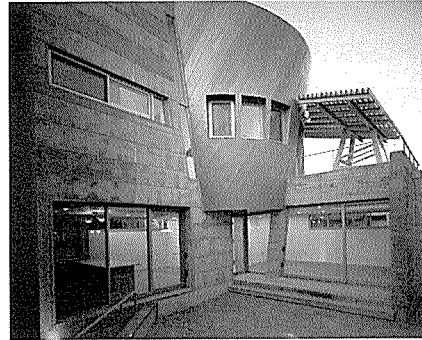
위치 경기도 고양시 일산구 마두동 971-3  
 지역지구 전용주거지역  
 대지면적 239㎡  
 건축면적 116㎡  
 연면적 250㎡  
 건폐율 48.44%  
 용적률 80.20%  
 구조 철근콘크리트조, 부분 철골구조  
 외부마감 벽 - 라인징크판, 송패널 패턴 노출콘크리트,  
 시멘트 베이스 패널,  
 지붕 - 갈바륨 강판 지붕



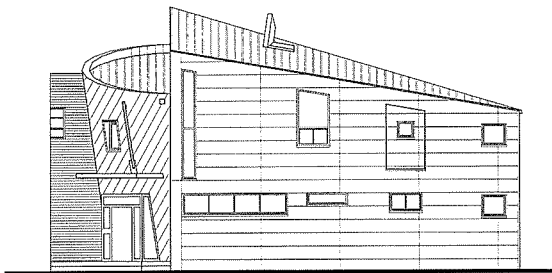
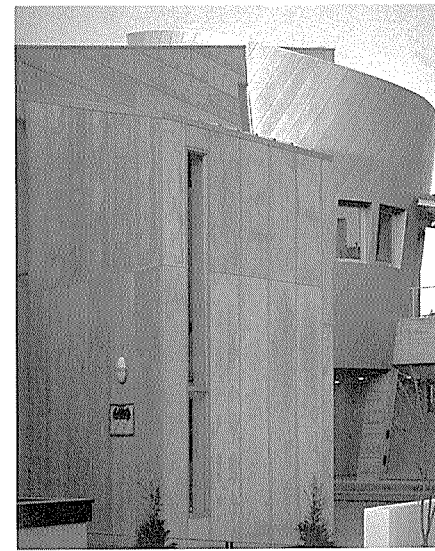
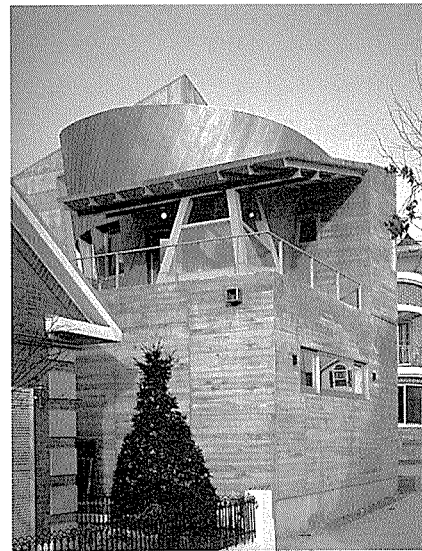
배치도



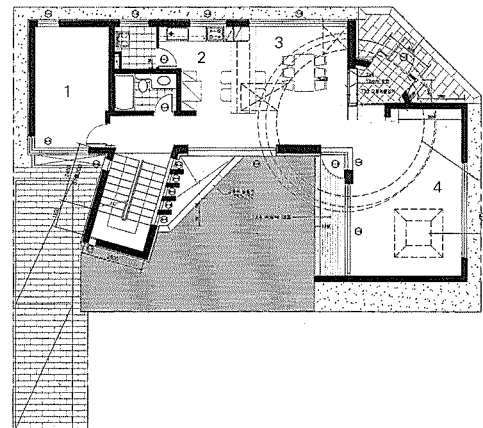
거실 천장 단면도



마당측 단면도

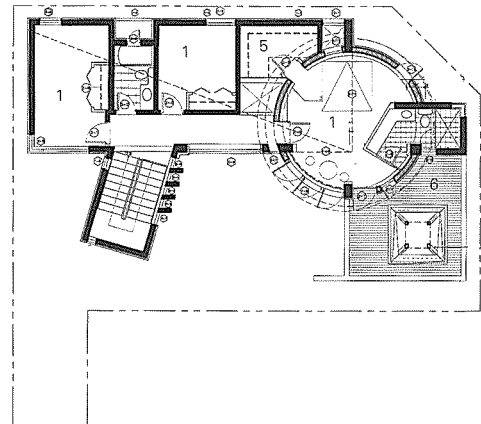


동측 입면도



1층 평면도

- 1. 침실
- 2. 부엌
- 3. 식당
- 4. 거실
- 5. 드레스룸
- 6. 데크



2층 평면도