

Chroma Line의 사용방법

서울대학교병원 치과중앙기공실

소 개

modifier porcelain 가
 modifier porcelain powder shade
 가 range 가
 chroma line
 (chroma) (hue), (value),
 modifier porcelain
 (hue) Chroma line body powder
 70%
 가 (hue) < A>
 (value)

적응증

(tone) (chroma), (purity)
 가 shade guide stain
 chroma 가
 • Cervical
 • Proximal
 • Incisal
 • Mamelon
 • shade guide



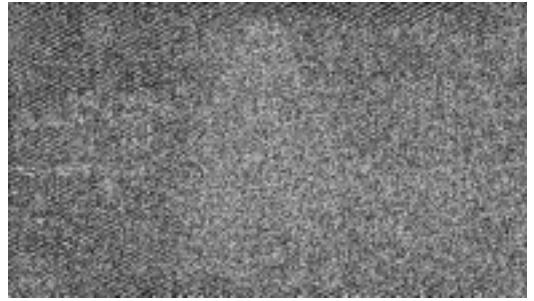
A.

사용방법

body powder 90%
 chroma line 10% body powder 85%
 chroma line 15%
 •
 body powder chroma line 85:15
 80:20
 < 1>



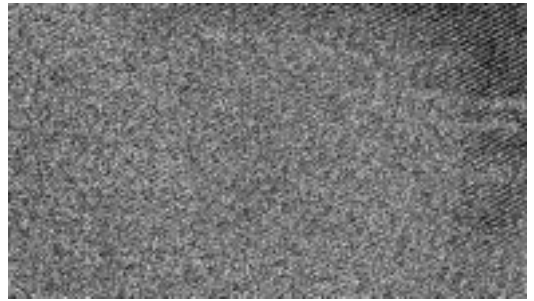
1.



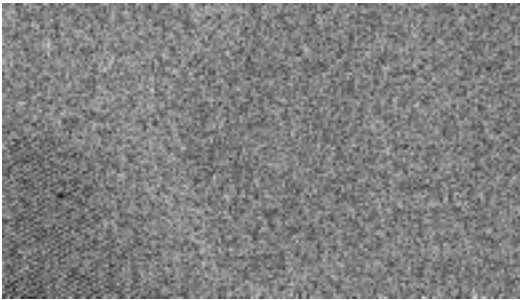
2.



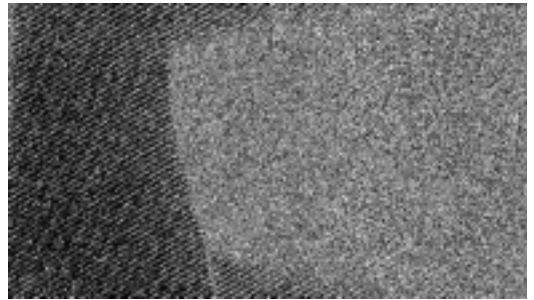
3.



4.



5.

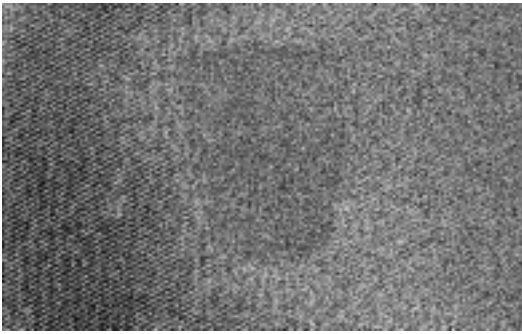


6.

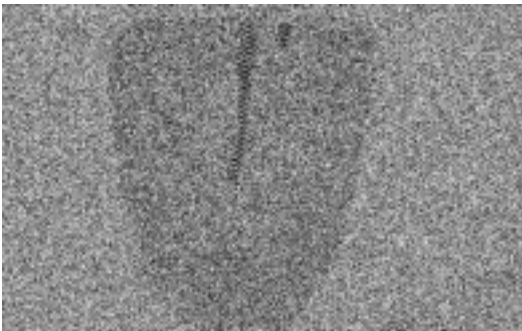
- body powder chroma line 80:20
 chroma line
 body powder
 pontic base clearance가
 opacious body

- 2> stain enamel
 color enamel powder
 transparent powder chroma line(basic A4
 chroma line A4
 가 dentin
 enamel powder
 transparentdml

<



7.



8.

enamel color powder transparent powder 5%
 chroma line 가 .
 stain incisal
 tip transparent 50% chroma line
 50% < 3, 4, 5>.

- mamelon body powder mamelon yellow-orange red-orange 가
 enamel pocelain
 Kit chroma line mamelon powder chroma line powder powder .
 range red-orange < 6, 7>.
- regular shade 가 A2 body powder A2 chromaline 10% 가 < 8>.

주의 사항

- chroma line low-fusing pocelain 900 schedule 가
- All-ceramic gold paradium powder
- 가 .
- powder () 가 .