

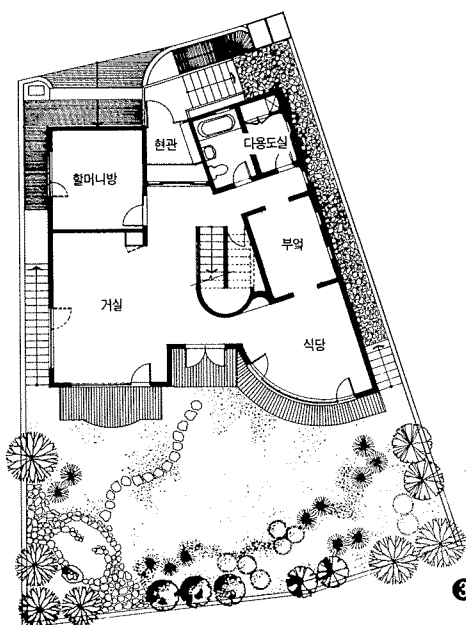
# 성북동 S씨 주택

Seong buk-dong S's Residence

崔東奎/(주) 서인 종합건축사사무소  
Designed by Choi, Dong-Kyu



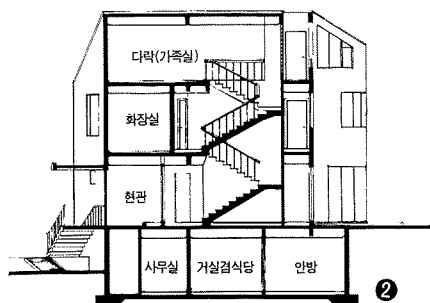
대지위치 / 서울시 성북구 성북동 1-98  
지역·지구 / 전용주거지역  
대지면적 / 294m<sup>2</sup>  
건축면적 / 114.54m<sup>2</sup>  
연면적 / 344.10m<sup>2</sup>  
건폐율 / 38.96m<sup>2</sup>  
용적률 / 76.93m<sup>2</sup>



1

3

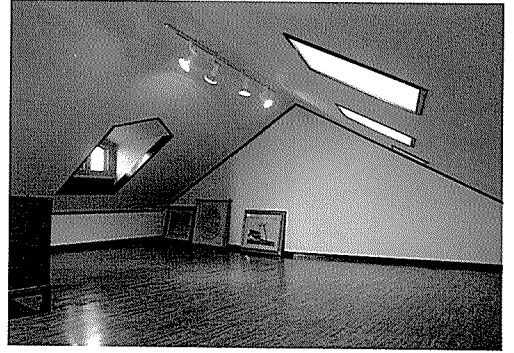
- ① 원경
- ② 단면도
- ③ 배치 및 1층 평면도
- ④ 전면 외부 상세
- ⑤ 후면 외벽 상세
- ⑥ 3층 다락(가족실)
- ⑦ 지하층 연결 계단측 상세
- ⑧ 2층 평면도
- ⑨ 지하층 평면도



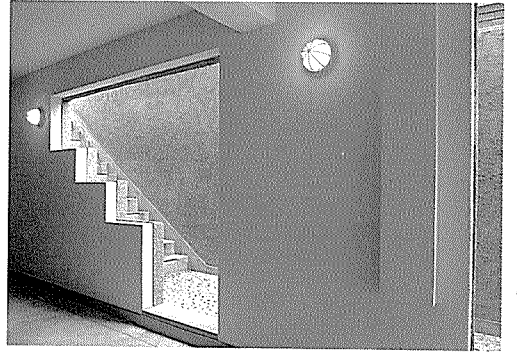
2



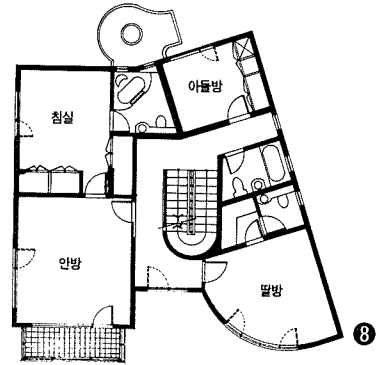
4



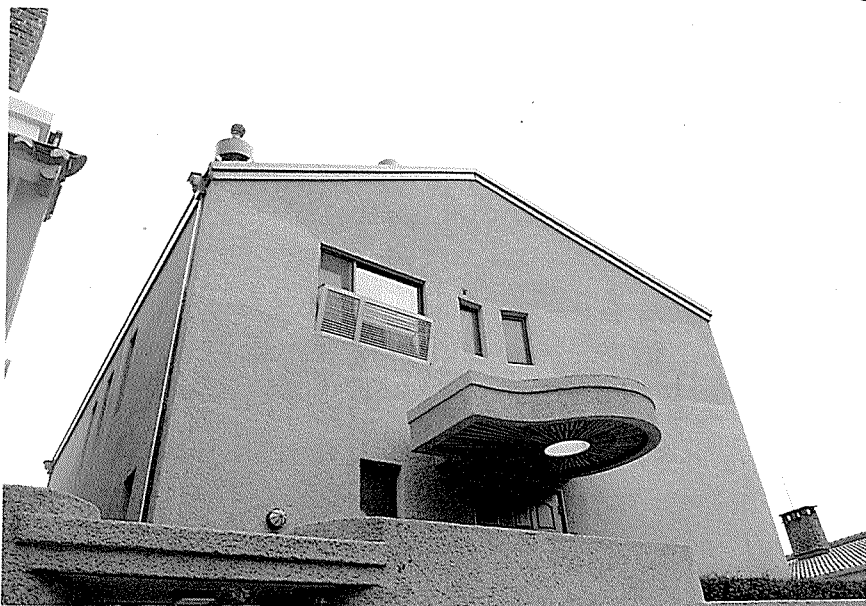
6



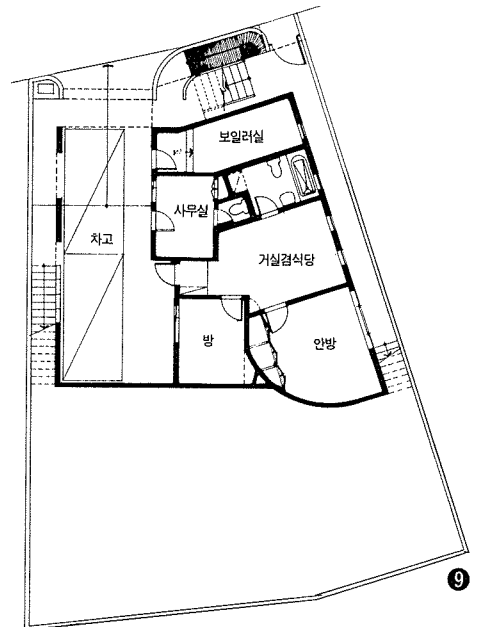
7



8



5



9